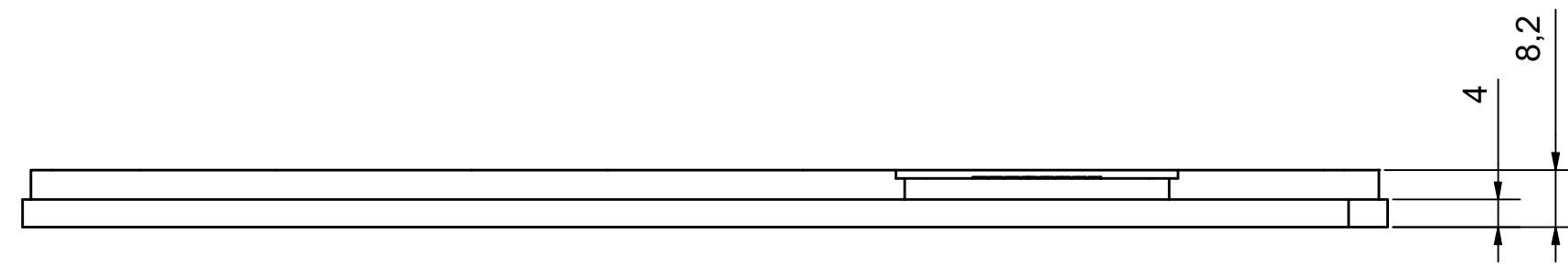
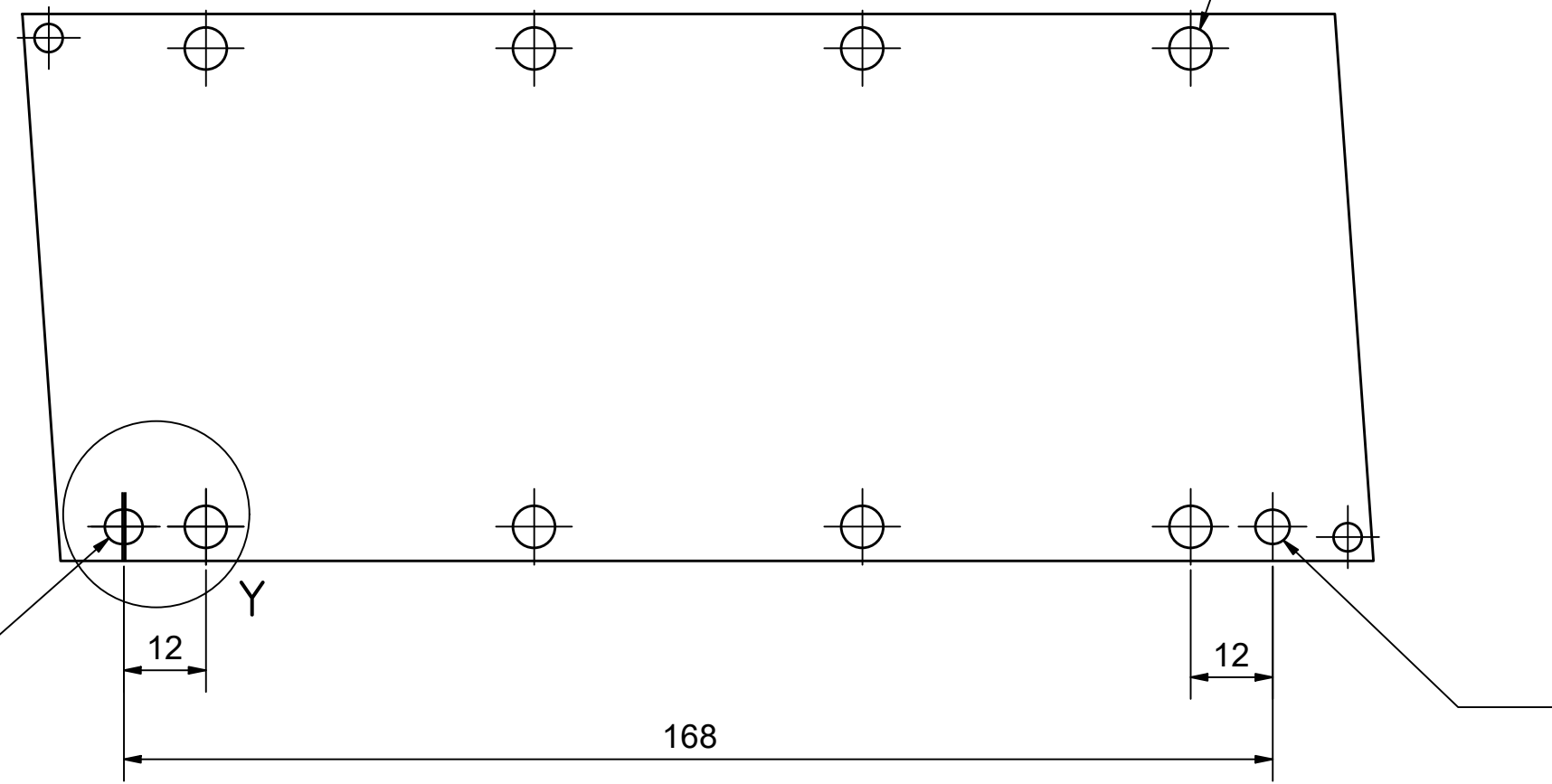


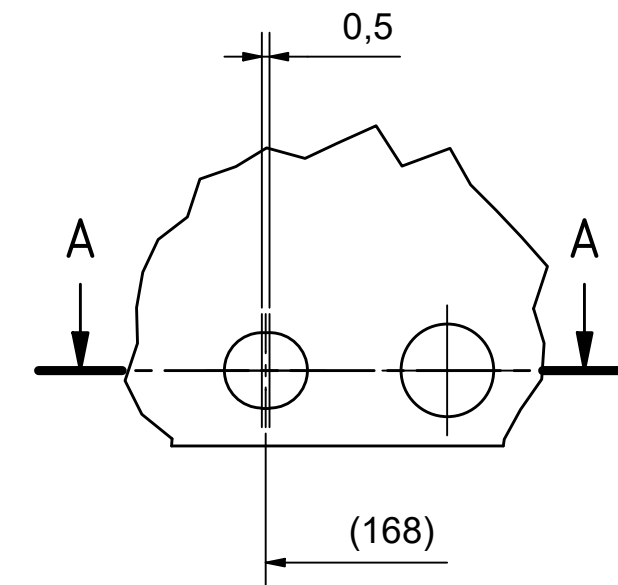
Hole \varnothing 6 mm for Screw M5 DIN 7984 (short head)
Loch \varnothing 6 mm für eine Schraube M5 DIN 7984 (kurzer Kopf)

Slotted hole \varnothing 5 mm
for Dowel \varnothing 5 m6 (optional use)
Langloch \varnothing 5 mm
für Passstift \varnothing 5 m6 (optional)

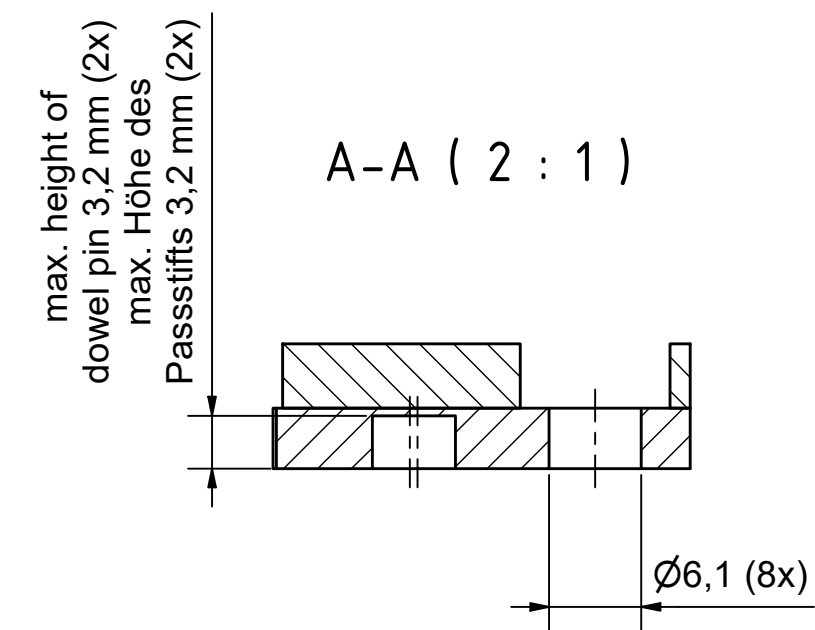
Hole \varnothing 5 mm
for Dowel \varnothing 5 m6 (optional use)
Bohrung \varnothing 5 mm
für Passstift \varnothing 5 m6 (optional)



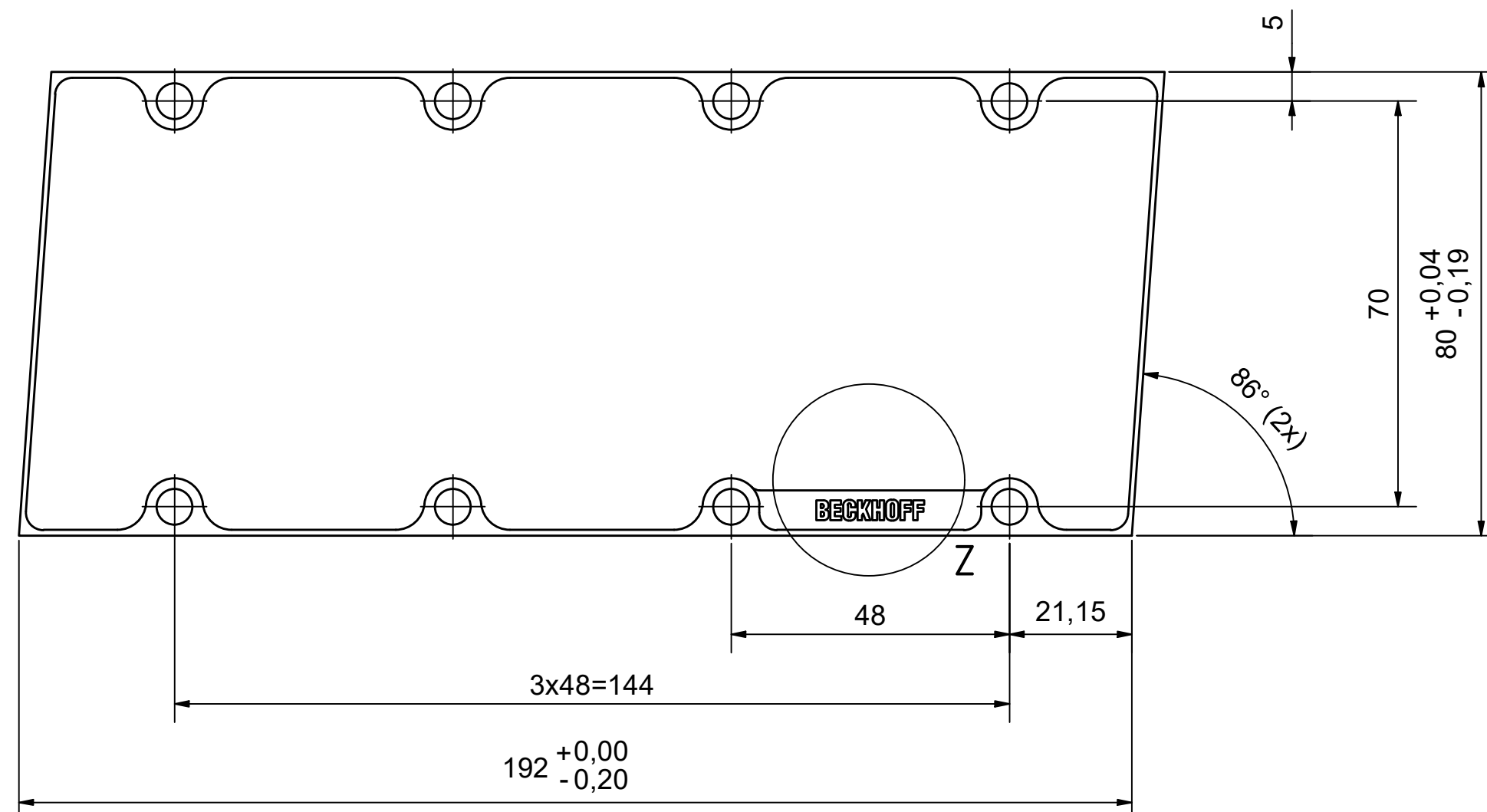
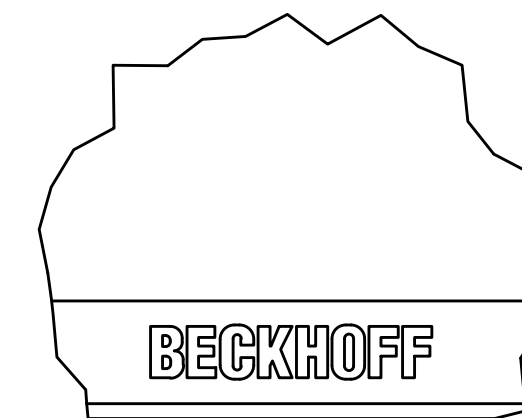
Y (2 : 1)



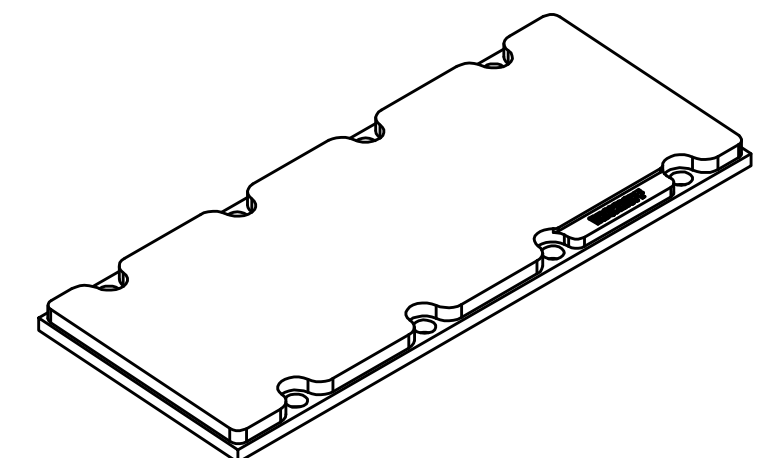
A-A (2 : 1)



Z (2 : 1)



M (1 : 2)



Bezeichnung / description Magnetplatte Magnet plate		Abteilungskennzeichen / department ID Motion	
AL8541-w000-0000		Dokumentennummer / document number 5000000103	
ISO 128 Maßstab scale	1 : 1	Blattgröße sheet size	A1
Blatt sheet	1 / 1	Revision	B
Projektbezeichnung project name		Datum date	
BECKHOFF		07.03.2025	

Copyright reserved to ISO 15011
 Ein Bauteil darf nicht ohne schriftliche Genehmigung der Firma Beckhoff Automation GmbH & Co. KG
 A part of this document may not be reproduced, stored in a retrieval system, or sent and made accessible to other parties, especially competitors.
 Ein Bauteil darf nicht ohne schriftliche Genehmigung der Firma Beckhoff Automation GmbH & Co. KG
 A part of this document may not be reproduced, stored in a retrieval system, or sent and made accessible to other parties, especially competitors.