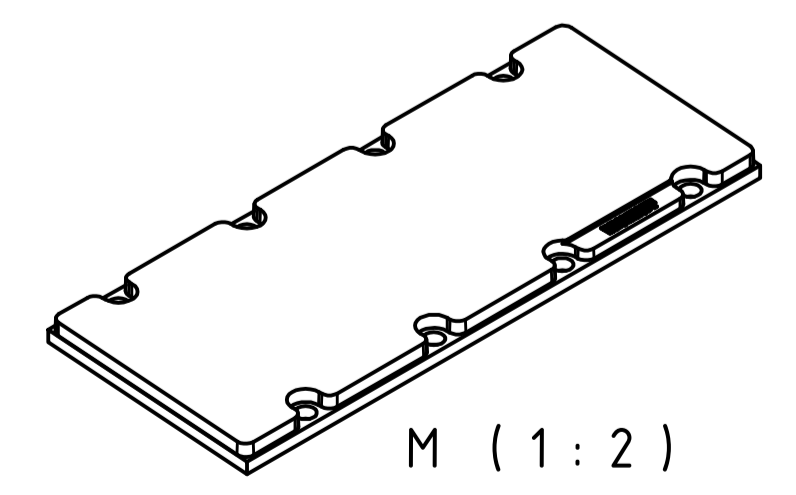
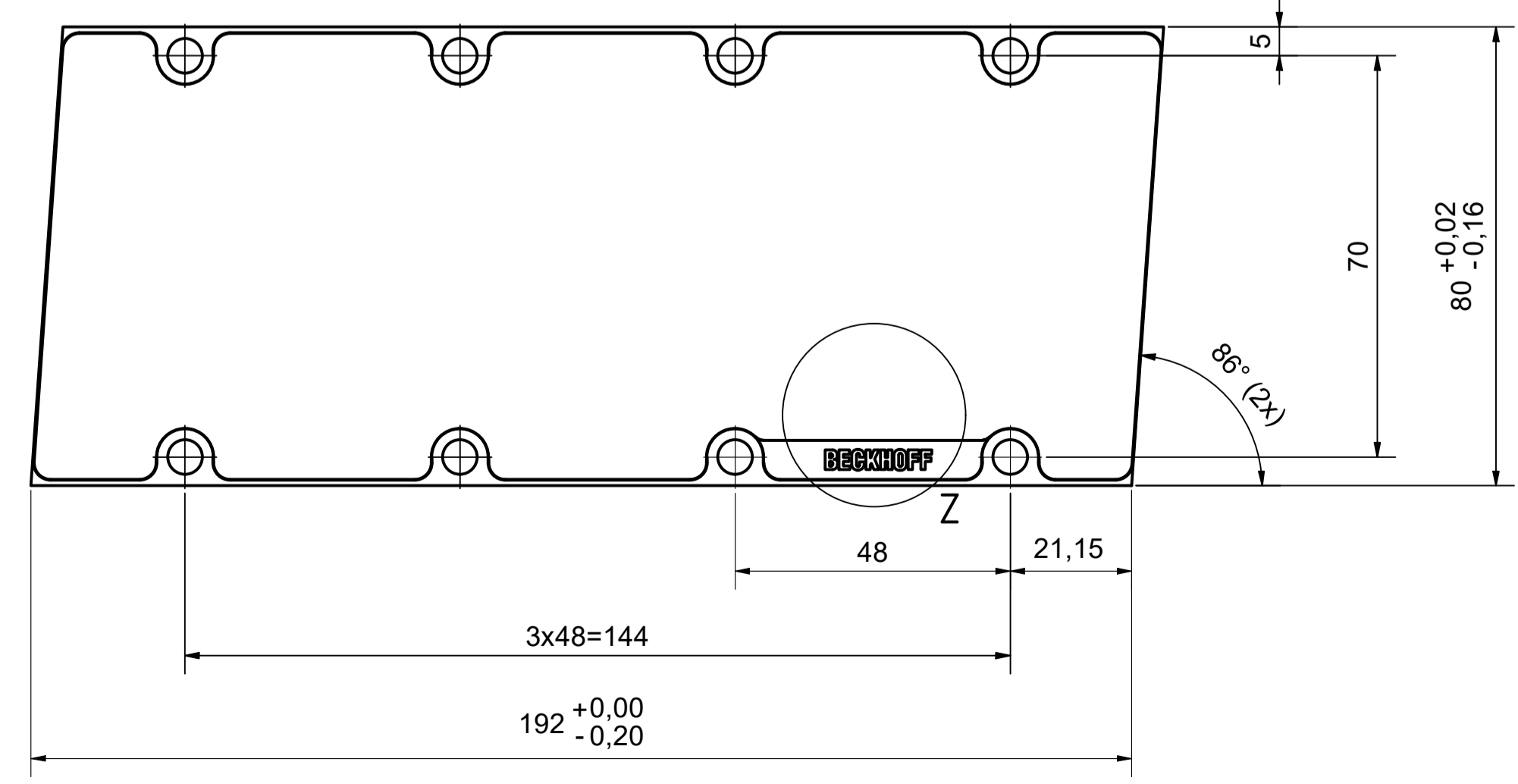
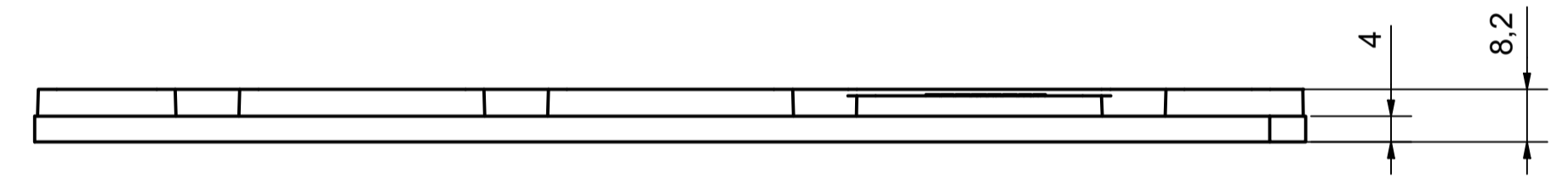
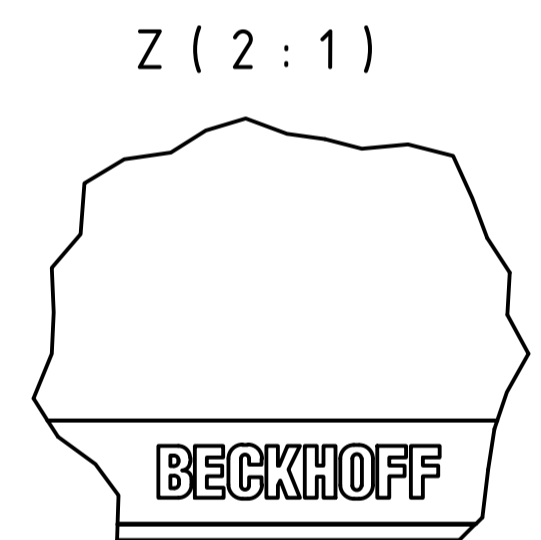
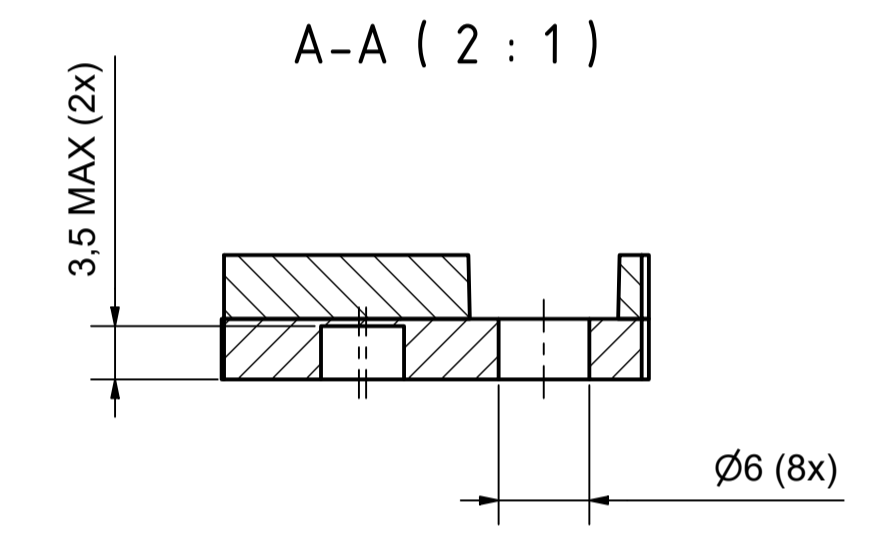
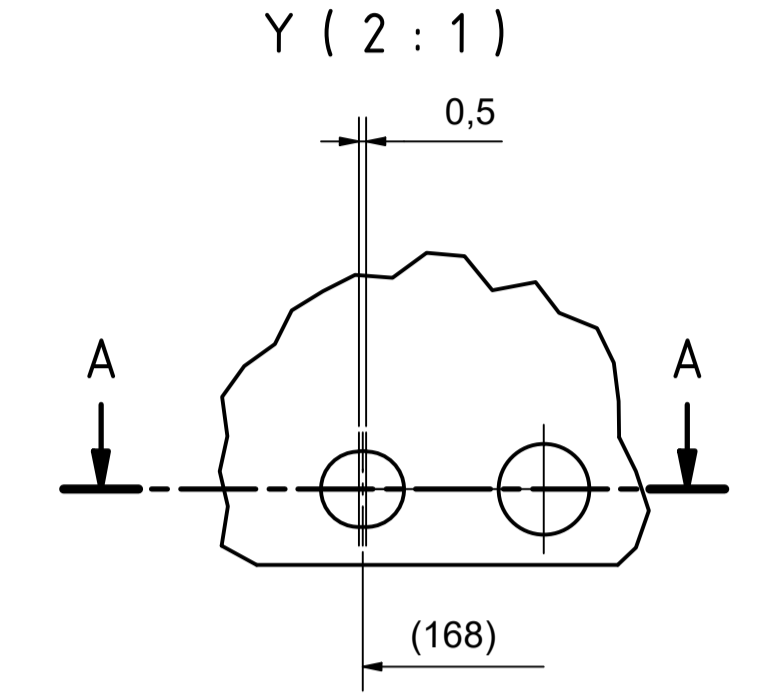
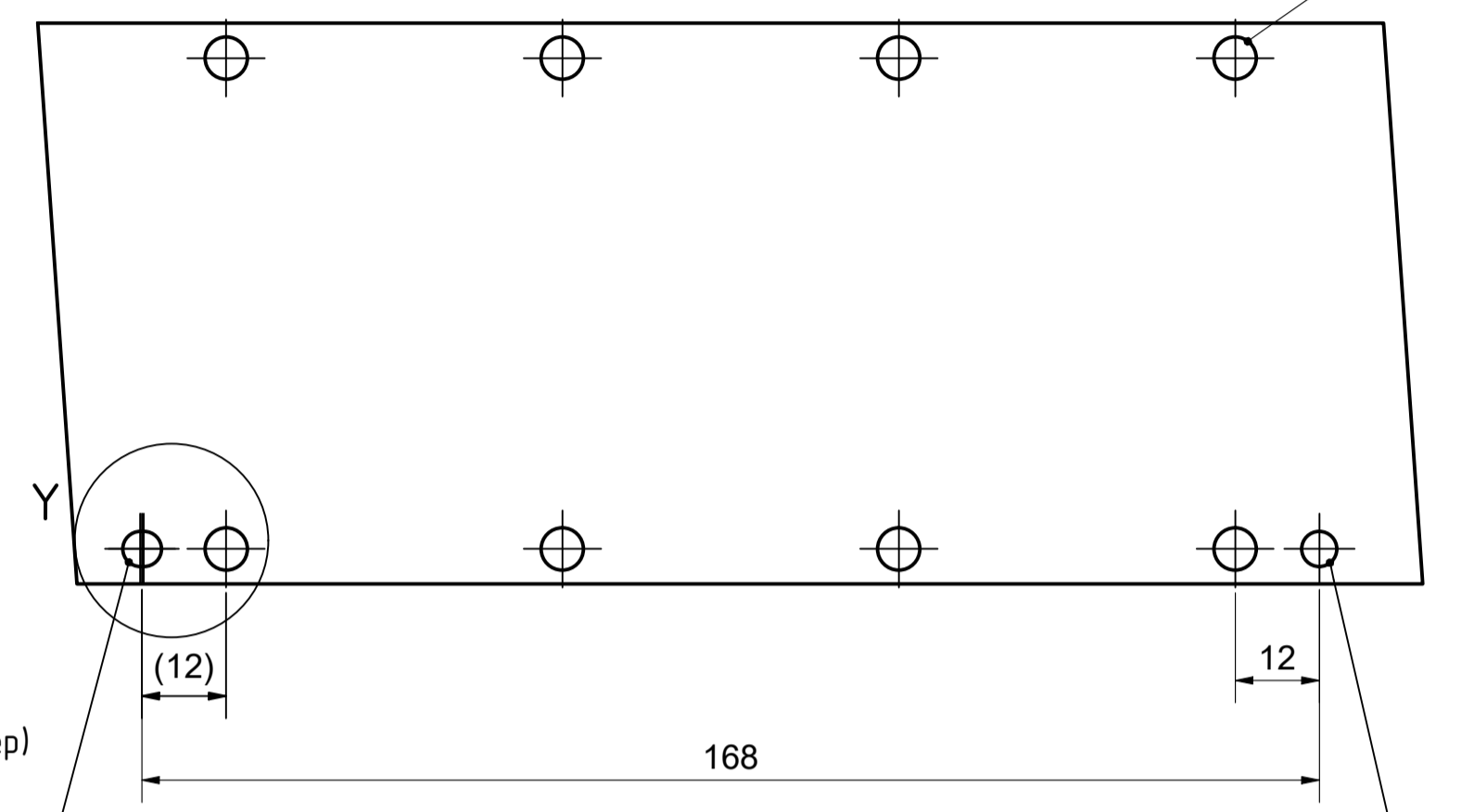


Hole \varnothing 6 mm
for Screw M5 DIN7984 (short head)
Bohrung \varnothing 6 mm
für Schraube M5 DIN7984 (kurzer Kopf)

Slotted hole \varnothing 5 mm (3,5 mm deep)
for Dowel \varnothing 5 m6 (optional use)
Langloch \varnothing 5 mm (3,5 mm tief)
für Passstift \varnothing 5 m6 (optional)

Hole \varnothing 5 mm (3,5 mm deep)
for Dowel \varnothing 5 m6 (optional use)
Bohrung \varnothing 5 mm (3,5 mm tief)
für Passstift \varnothing 5 m6 (optional)



Bezeichnung / description Magnetplatte Magnet plate		Abteilungskennzeichen / department ID Motion	
AL8541-0000-0000		Dokumentnummer / document number 5000000103	
ISO 129 dimension	Maßstab scale	Blattgröße sheet size	Blatt sheet
mm	1 : 1	A1	1 / 1
Revision	Projektbezeichnung project name		Datum date
A			17.06.2021

Copyright reserved to ISO 15014
 If it is intended to use the information in this document for a purpose other than that for which it was prepared, or any other made accessible to third parties, especially competitors,
 the user is obliged to inform Beckhoff AG.

Schutzrechte nach DIN ISO 15014 beachten
 Die Rechte an den in diesem Dokument enthaltenen Informationen sind Eigentum der Firma Beckhoff Automation GmbH & Co. KG
 und sind nicht, ohne schriftliche Genehmigung der Firma Beckhoff Automation GmbH & Co. KG,
 Dritten oder sonstigen Dritten ohne schriftliche Genehmigung der Firma Beckhoff Automation GmbH & Co. KG,
 weiterzugeben.