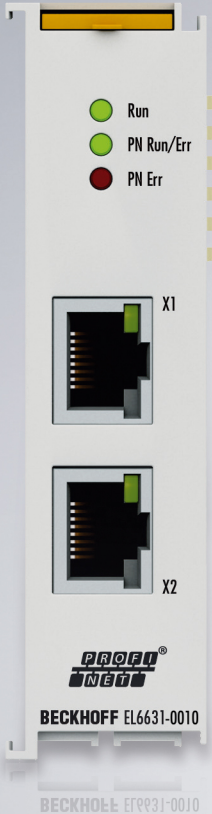


Documentation | EN

# EL6631-0010

PROFINET DEVICE Supplement





# Table of contents

<b>1 Foreword</b> .....	<b>5</b>
1.1 Notes on the documentation .....	5
1.2 Guide through documentation .....	6
1.3 Notes on information security.....	7
1.4 Safety instructions .....	8
1.5 Documentation issue status .....	9
1.6 Version identification of EtherCAT devices .....	10
1.6.1 General notes on marking.....	10
1.6.2 Version identification of EL terminals.....	11
1.6.3 Beckhoff Identification Code (BIC).....	12
1.6.4 Electronic access to the BIC (eBIC).....	14
<b>2 Product overview</b> .....	<b>16</b>
2.1 PROFINET EL6631-0010 - Introduction .....	16
2.2 EL6631-0010 - Technical data .....	17
2.3 EL6631-0010 - LEDs.....	18
<b>3 Mounting and wiring</b> .....	<b>20</b>
3.1 Instructions for ESD protection .....	20
3.2 Explosion protection .....	21
3.2.1 ATEX - Special conditions (standard temperature range).....	21
3.2.2 IECEx - Special conditions.....	22
3.2.3 Continuative documentation for ATEX and IECEx.....	23
3.3 UL notice .....	24
3.4 Note - power supply .....	25
3.5 Mounting and demounting - traction lever unlocking.....	26
3.6 Mounting and demounting - top front unlocking .....	28
3.7 Installation positions.....	30
3.8 Note on shielding .....	32
3.9 Disposal .....	33
<b>4 Commissioning</b> .....	<b>34</b>
4.1 PROFINET Features.....	34
4.1.1 Alarms.....	34
4.1.2 Record data.....	34
4.1.3 Shared Device.....	35
4.1.4 Diagnostics.....	36
4.1.5 Submodules .....	38
4.2 Technical data - PROFINET RT.....	39
4.3 PROFINET device (EL6631-0010) integration under TwinCAT 2.11 .....	40
<b>5 TwinCAT supplement</b> .....	<b>49</b>
5.1 TwinCAT 2.10 .....	49
5.1.1 PROFINET device integration under TwinCAT 2.10.....	49
5.2 TwinCAT 2.11 .....	53
5.2.1 Technical data - PROFINET RT.....	53
5.2.2 PROFINET device integration under TwinCAT 2.11 .....	53

<b>6 TwinCAT library and programming .....</b>	<b>61</b>
6.1 Functions.....	61
6.1.1 FUNCTION_BLOCK FB_Write_luM_EL6631_0010 .....	61
6.1.2 FUNCTION_BLOCK FB_Read_luM_EL6631_0010.....	62
<b>7 Appendix.....</b>	<b>64</b>
7.1 FAQ.....	64
7.1.1 Device description file (GSDML) / DAP (DeviceAccessPoint) .....	64
7.1.2 Task configuration.....	66
7.1.3 EL663x-00x0 EtherCAT Terminals .....	67
7.1.4 BoxStates of the PROFINET devices .....	69
7.1.5 Diagnostic status under TIA.....	70
7.2 EtherCAT AL Status Codes .....	71
7.3 Firmware compatibility .....	72
7.4 Firmware Update EL/ES/EM/ELM/EP/EPP/ERPxxxx .....	73
7.4.1 Device description ESI file/XML .....	74
7.4.2 Firmware explanation.....	77
7.4.3 Updating controller firmware *.efw .....	78
7.4.4 FPGA firmware *.rbf.....	80
7.4.5 Simultaneous updating of several EtherCAT devices.....	84
7.5 Master device file GSDML .....	85
7.6 Support and Service.....	86

# 1 Foreword

## 1.1 Notes on the documentation

### Intended audience

This description is only intended for the use of trained specialists in control and automation engineering who are familiar with the applicable national standards.

It is essential that the documentation and the following notes and explanations are followed when installing and commissioning these components.

The qualified personnel is obliged to always use the currently valid documentation.

The responsible staff must ensure that the application or use of the products described satisfy all the requirements for safety, including all the relevant laws, regulations, guidelines and standards.

### Disclaimer

The documentation has been prepared with care. The products described are, however, constantly under development.

We reserve the right to revise and change the documentation at any time and without prior announcement.

No claims for the modification of products that have already been supplied may be made on the basis of the data, diagrams and descriptions in this documentation.

### Trademarks

Beckhoff®, TwinCAT®, TwinCAT/BSD®, TC/BSD®, EtherCAT®, EtherCAT G®, EtherCAT G10®, EtherCAT P®, Safety over EtherCAT®, TwinSAFE®, XFC®, XTS® and XPlanar® are registered trademarks of and licensed by Beckhoff Automation GmbH. Other designations used in this publication may be trademarks whose use by third parties for their own purposes could violate the rights of the owners.

### Patent Pending

The EtherCAT Technology is covered, including but not limited to the following patent applications and patents: EP1590927, EP1789857, EP1456722, EP2137893, DE102015105702 with corresponding applications or registrations in various other countries.



EtherCAT® is registered trademark and patented technology, licensed by Beckhoff Automation GmbH, Germany.

### Copyright

© Beckhoff Automation GmbH & Co. KG, Germany.

The reproduction, distribution and utilization of this document as well as the communication of its contents to others without express authorization are prohibited.

Offenders will be held liable for the payment of damages. All rights reserved in the event of the grant of a patent, utility model or design.

## 1.2 Guide through documentation

### NOTICE



#### Further components of documentation

This documentation describes device-specific content. It is part of the modular documentation concept for Beckhoff I/O components. For the use and safe operation of the device / devices described in this documentation, additional cross-product descriptions are required, which can be found in the following table.

Title	Description
<b>EtherCAT System Documentation</b> ( <a href="#">PDF</a> )	<ul style="list-style-type: none"> <li>• System overview</li> <li>• EtherCAT basics</li> <li>• Cable redundancy</li> <li>• Hot Connect</li> <li>• EtherCAT devices configuration</li> </ul>
<b>Explosion Protection for Terminal Systems</b> ( <a href="#">PDF</a> )	Notes on the use of the Beckhoff terminal systems in hazardous areas according to ATEX and IECEx
<b>Infrastructure for EtherCAT/Ethernet</b> ( <a href="#">PDF</a> )	Technical recommendations and notes for design, implementation and testing
<b>Software Declarations I/O</b> ( <a href="#">PDF</a> )	Open source software declarations for Beckhoff I/O components

The documentations can be viewed at and downloaded from the Beckhoff website ([www.beckhoff.com](http://www.beckhoff.com)) via:

- the “Documentation and Download” area of the respective product page,
- the [Download finder](#),
- the [Beckhoff Information System](#).

If you have any suggestions or proposals for our documentation, please send us an e-mail stating the documentation title and version number to: [documentation@beckhoff.com](mailto:documentation@beckhoff.com)

## 1.3 Notes on information security

The products of Beckhoff Automation GmbH & Co. KG (Beckhoff), insofar as they can be accessed online, are equipped with security functions that support the secure operation of plants, systems, machines and networks. Despite the security functions, the creation, implementation and constant updating of a holistic security concept for the operation are necessary to protect the respective plant, system, machine and networks against cyber threats. The products sold by Beckhoff are only part of the overall security concept. The customer is responsible for preventing unauthorized access by third parties to its equipment, systems, machines and networks. The latter should be connected to the corporate network or the Internet only if appropriate protective measures have been set up.

In addition, the recommendations from Beckhoff regarding appropriate protective measures should be observed. Further information regarding information security and industrial security can be found in our <https://www.beckhoff.com/secguide>.

Beckhoff products and solutions undergo continuous further development. This also applies to security functions. In light of this continuous further development, Beckhoff expressly recommends that the products are kept up to date at all times and that updates are installed for the products once they have been made available. Using outdated or unsupported product versions can increase the risk of cyber threats.

To stay informed about information security for Beckhoff products, subscribe to the RSS feed at <https://www.beckhoff.com/secinfo>.



## 1.4 Safety instructions

### Safety regulations

Please note the following safety instructions and explanations!  
Product-specific safety instructions can be found on following pages or in the areas mounting, wiring, commissioning etc.

### Exclusion of liability

All the components are supplied in particular hardware and software configurations appropriate for the application. Modifications to hardware or software configurations other than those described in the documentation are not permitted, and nullify the liability of Beckhoff Automation GmbH & Co. KG.

### Personnel qualification

This description is only intended for trained specialists in control, automation and drive engineering who are familiar with the applicable national standards.

### Signal words

The signal words used in the documentation are classified below. In order to prevent injury and damage to persons and property, read and follow the safety and warning notices.

#### Personal injury warnings

**⚠ DANGER**

Hazard with high risk of death or serious injury.

**⚠ WARNING**

Hazard with medium risk of death or serious injury.

**⚠ CAUTION**

There is a low-risk hazard that could result in medium or minor injury.

#### Warning of damage to property or environment

**NOTICE**

The environment, equipment, or data may be damaged.

#### Information on handling the product



This information includes, for example:  
recommendations for action, assistance or further information on the product.



## 1.5 Documentation issue status

Version	Comment
3.6.0	<ul style="list-style-type: none"> <li>• Update chapter "Mounting and wiring"</li> <li>• Update structure</li> <li>• Update revision status</li> </ul>
3.5.0	<ul style="list-style-type: none"> <li>• Update chapter "Technical data"</li> <li>• Update structure</li> <li>• Update notes</li> </ul>
3.4.0	<ul style="list-style-type: none"> <li>• Update chapter "Technical data"</li> <li>• Update structure</li> </ul>
3.3.0	<ul style="list-style-type: none"> <li>• Update chapter "Technical data"</li> <li>• Update chapter "PROFINET features"</li> <li>• Chapter "Recommended mounting rails" removed</li> <li>• Update revision status</li> </ul>
3.2.0	<ul style="list-style-type: none"> <li>• Update chapter "Technical data"</li> <li>• Update chapter "Version identification of EtherCAT devices"</li> <li>• Update structure</li> <li>• Update notes</li> <li>• Update revision status</li> <li>• Chapter Disposal added</li> </ul>
3.1.0	<ul style="list-style-type: none"> <li>• Update structure</li> <li>• Update revision status</li> </ul>
3.0.1	<ul style="list-style-type: none"> <li>• Update chapter "Technical data"</li> <li>• Update structure</li> <li>• Update revision status</li> </ul>
3.0.0	<ul style="list-style-type: none"> <li>• Migration</li> <li>• Update structure</li> <li>• Update revision status</li> </ul>
2.0.0	<ul style="list-style-type: none"> <li>• Update structure, addenda Technical Data</li> </ul>
1.1.0	<ul style="list-style-type: none"> <li>• Chapter "SharedDevice" added, EC LED description amended, tree structure amended</li> </ul>
1.0.0	<ul style="list-style-type: none"> <li>• First version</li> </ul>

### Firmware and hardware versions

The software version of the PROFINET device supplement can be taken from the corresponding TwinCAT build number.

For the EL6631-0010, the firmware and hardware versions (delivery state) can be taken from the serial number printed on the side of the terminal.

## 1.6 Version identification of EtherCAT devices

### 1.6.1 General notes on marking

#### Designation

A Beckhoff EtherCAT device has a 14-digit designation, made up of

- family key
- type
- version
- revision

Example	Family	Type	Version	Revision
EL3314-0000-0016	EL terminal 12 mm, non-pluggable connection level	3314 4-channel thermocouple terminal	0000 basic type	0016
ES3602-0010-0017	ES terminal 12 mm, pluggable connection level	3602 2-channel voltage measurement	0010 high-precision version	0017
CU2008-0000-0000	CU device	2008 8-port fast ethernet switch	0000 basic type	0000

#### Notes

- The elements mentioned above result in the **technical designation**. EL3314-0000-0016 is used in the example below.
- EL3314-0000 is the order identifier, in the case of “-0000” usually abbreviated to EL3314. “-0016” is the EtherCAT revision.
- The **order identifier** is made up of
  - family key (EL, EP, CU, ES, KL, CX, etc.)
  - type (3314)
  - version (-0000)
- The **revision** -0016 shows the technical progress, such as the extension of features with regard to the EtherCAT communication, and is managed by Beckhoff.  
In principle, a device with a higher revision can replace a device with a lower revision, unless specified otherwise, e.g. in the documentation.  
Associated and synonymous with each revision there is usually a description (ESI, EtherCAT Slave Information) in the form of an XML file, which is available for download from the Beckhoff web site.  
From 2014/01 the revision is shown on the outside of the IP20 terminals, see Fig. “EL2872 with revision 0022 and serial number 01200815”.
- The type, version and revision are read as decimal numbers, even if they are technically saved in hexadecimal.

## 1.6.2 Version identification of EL terminals

The serial number/ data code for Beckhoff IO devices is usually the 8-digit number printed on the device or on a sticker. The serial number indicates the configuration in delivery state and therefore refers to a whole production batch, without distinguishing the individual modules of a batch.

Structure of the serial number: **KK YY FF HH**

KK - week of production (CW, calendar week)

YY - year of production

FF - firmware version

HH - hardware version

Example with serial number 12 06 3A 02:

12 - production week 12

06 - production year 2006

3A - firmware version 3A

02 - hardware version 02



Fig. 1: EL2872 with revision 0022 and serial number 01200815

### 1.6.3 Beckhoff Identification Code (BIC)

The Beckhoff Identification Code (BIC) is increasingly being applied to Beckhoff products to uniquely identify the product. The BIC is represented as a Data Matrix Code (DMC, code scheme ECC200), the content is based on the ANSI standard MH10.8.2-2016.

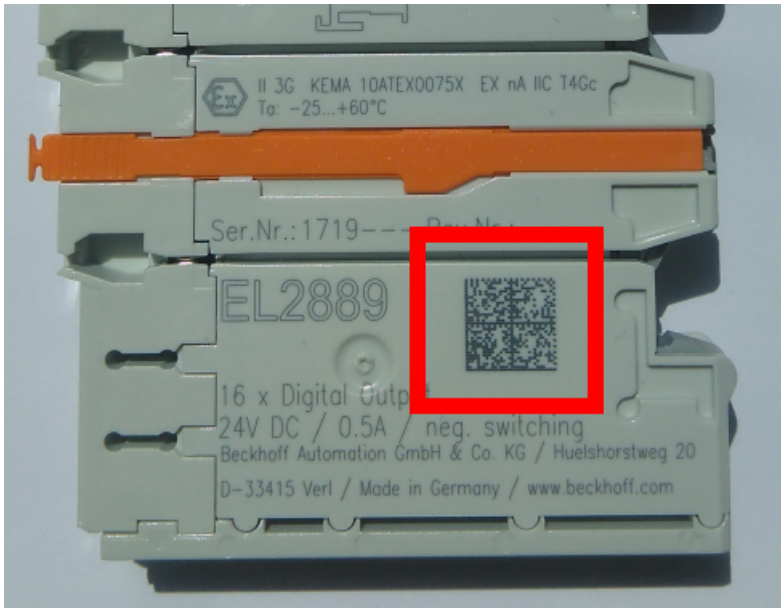


Fig. 2: BIC as data matrix code (DMC, code scheme ECC200)

The BIC will be introduced step by step across all product groups.

Depending on the product, it can be found in the following places:

- on the packaging unit
- directly on the product (if space suffices)
- on the packaging unit and the product

The BIC is machine-readable and contains information that can also be used by the customer for handling and product management.

Each piece of information can be uniquely identified using the so-called data identifier (ANSI MH10.8.2-2016). The data identifier is followed by a character string. Both together have a maximum length according to the table below. If the information is shorter, spaces are added to it.

Following information is possible, positions 1 to 4 are always present, the other according to need of production:

Position	Type of information	Explanation	Data identifier	Number of digits incl. data identifier	Example
1	Beckhoff order number	<b>Beckhoff order number</b>	1P	8	<b>1P</b> 072222
2	Beckhoff Traceability Number (BTN)	<b>Unique serial number, see note below</b>	SBTN	12	<b>SBTN</b> k4p562d7
3	Article description	<b>Beckhoff article description, e.g. EL1008</b>	1K	32	<b>1K</b> EL1809
4	Quantity	<b>Quantity in packaging unit, e.g. 1, 10, etc.</b>	Q	6	<b>Q</b> 1
5	Batch number	Optional: Year and week of production	2P	14	<b>2P</b> 401503180016
6	ID/serial number	Optional: Present-day serial number system, e.g. with safety products	51S	12	<b>51S</b> 678294
7	Variant number	Optional: Product variant number on the basis of standard products	30P	32	<b>30P</b> F971, 2*K183
...					

Further types of information and data identifiers are used by Beckhoff and serve internal processes.

**Structure of the BIC**

Example of composite information from positions 1 to 4 and with the above given example value on position 6. The data identifiers are highlighted in bold font:

**1P**072222**SBTN**k4p562d7**1K**EL1809 **Q**1 **51S**678294

Accordingly as DMC:



Fig. 3: Example DMC **1P**072222**SBTN**k4p562d7**1K**EL1809 **Q**1 **51S**678294

**BTN**

An important component of the BIC is the Beckhoff Traceability Number (BTN, position 2). The BTN is a unique serial number consisting of eight characters that will replace all other serial number systems at Beckhoff in the long term (e.g. batch designations on IO components, previous serial number range for safety products, etc.). The BTN will also be introduced step by step, so it may happen that the BTN is not yet coded in the BIC.

<b>NOTICE</b>
This information has been carefully prepared. However, the procedure described is constantly being further developed. We reserve the right to revise and change procedures and documentation at any time and without prior notice. No claims for changes can be made from the information, illustrations and descriptions in this documentation.

## 1.6.4 Electronic access to the BIC (eBIC)

### Electronic BIC (eBIC)

The Beckhoff Identification Code (BIC) is applied to the outside of Beckhoff products in a visible place. If possible, it should also be electronically readable.

The interface that the product can be electronically addressed by is crucial for the electronic readout.

### K-bus devices (IP20, IP67)

Currently, no electronic storage or readout is planned for these devices.

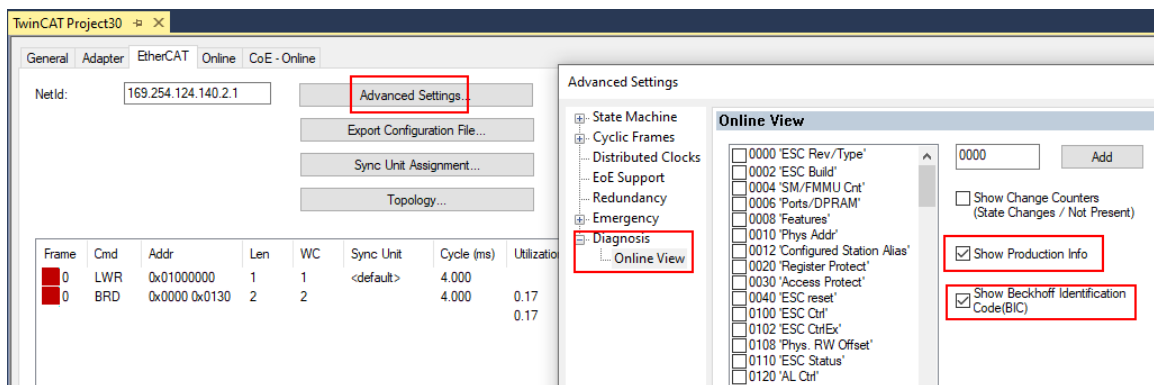
### EtherCAT devices (IP20, IP67)

All Beckhoff EtherCAT devices have an ESI-EEPROM which contains the EtherCAT identity with the revision number. The EtherCAT slave information, also colloquially known as the ESI/XML configuration file for the EtherCAT master, is stored in it. See the corresponding chapter in the EtherCAT system manual ([Link](#)) for the relationships.

Beckhoff also stores the eBIC in the ESI-EEPROM. The eBIC was introduced into Beckhoff IO production (terminals, box modules) in 2020; as of 2023, implementation is largely complete.

The user can electronically access the eBIC (if present) as follows:

- With all EtherCAT devices, the EtherCAT master (TwinCAT) can read the eBIC from the ESI-EEPROM
  - From TwinCAT 3.1 build 4024.11, the eBIC can be displayed in the online view.
  - To do this, check the "Show Beckhoff Identification Code (BIC)" checkbox under EtherCAT → Advanced Settings → Diagnostics:



- The BTN and its contents are then displayed:

No	Addr	Name	State	CRC	Fw	Hw	Production Data	ItemNo	BTN	Description	Quantity	BatchNo	SerialNo
1	1001	Term 1 (EK1100)	OP	0.0	0	0	---						
2	1002	Term 2 (EL1018)	OP	0.0	0	0	2020 KW36 Fr	072222	k4p562d7	EL1809	1		678294
3	1003	Term 3 (EL3204)	OP	0.0	7	6	2012 KW24 Sa						
4	1004	Term 4 (EL2004)	OP	0.0	0	0	---	072223	k4p562d7	EL2004	1		678295
5	1005	Term 5 (EL1008)	OP	0.0	0	0	---						
6	1006	Term 6 (EL2008)	OP	0.0	0	12	2014 KW14 Mo						
7	1007	Term 7 (EK1110)	OP	0	1	8	2012 KW25 Mo						

- Note: As shown in the figure, the production data HW version, FW version, and production date, which have been programmed since 2012, can also be displayed with "Show production info".
- Access from the PLC: From TwinCAT 3.1. build 4024.24, the functions *FB\_EcReadBIC* and *FB\_EcReadBTN* for reading into the PLC are available in the *Tc2\_EtherCAT* library from v3.3.19.0.
- EtherCAT devices with a CoE directory may also have the object 0x10E2:01 to display their own eBIC, which can also be easily accessed by the PLC:

- The device must be in PREOP/SAFEOP/OP for access:

Index	Name	Flags	Value
1000	Device type	RO	0x015E1389 (22942601)
1008	Device name	RO	ELM3704-0000
1009	Hardware version	RO	00
100A	Software version	RO	01
100B	Bootloader version	RO	J0.1.27.0
1011:0	Restore default parameters	RO	> 1 <
1018:0	Identity	RO	> 4 <
10E2:0	Manufacturer-specific Identification C...	RO	> 1 <
10E2:01	SubIndex 001	RO	1P158442SBTN0008jckp1KELM3704 Q1 2P482001000016
10F0:0	Backup parameter handling	RO	> 1 <
10F3:0	Diagnosis History	RO	> 21 <
10F8	Actual Time Stamp	RO	0x170bfb277e

- The object 0x10E2 will be preferentially introduced into stock products in the course of necessary firmware revision.
- From TwinCAT 3.1. build 4024.24, the functions *FB\_EcCoEReadBIC* and *FB\_EcCoEReadBTN* for reading into the PLC are available in the *Tc2\_EtherCAT* library from v3.3.19.0
- The following auxiliary functions are available for processing the BIC/BTN data in the PLC in *Tc2\_Uilities* as of TwinCAT 3.1 build 4024.24
  - *F\_SplitBIC*: The function splits the Beckhoff Identification Code (BIC) *sBICValue* into its components using known identifiers and returns the recognized substrings in the *ST\_SplittedBIC* structure as a return value
  - *BIC\_TO\_BTN*: The function extracts the BTN from the BIC and returns it as a return value
- Note: If there is further electronic processing, the BTN is to be handled as a string(8); the identifier "SBTN" is not part of the BTN.
- Technical background  
 The new BIC information is written as an additional category in the ESI-EEPROM during device production. The structure of the ESI content is largely dictated by the ETG specifications, therefore the additional vendor-specific content is stored using a category in accordance with the ETG.2010. ID 03 tells all EtherCAT masters that they may not overwrite these data in the event of an update or restore the data after an ESI update.  
 The structure follows the content of the BIC, see here. The EEPROM therefore requires approx. 50..200 bytes of memory.
- Special cases
  - If multiple hierarchically arranged ESCs are installed in a device, only the top-level ESC carries the eBIC information.
  - If multiple non-hierarchically arranged ESCs are installed in a device, all ESCs carry the eBIC information.
  - If the device consists of several sub-devices which each have their own identity, but only the top-level device is accessible via EtherCAT, the eBIC of the top-level device is located in the CoE object directory 0x10E2:01 and the eBICs of the sub-devices follow in 0x10E2:nn.

**PROFIBUS; PROFINET, and DeviceNet devices**

Currently, no electronic storage or readout is planned for these devices.



## 2 Product overview

### 2.1 PROFINET EL6631-0010 - Introduction

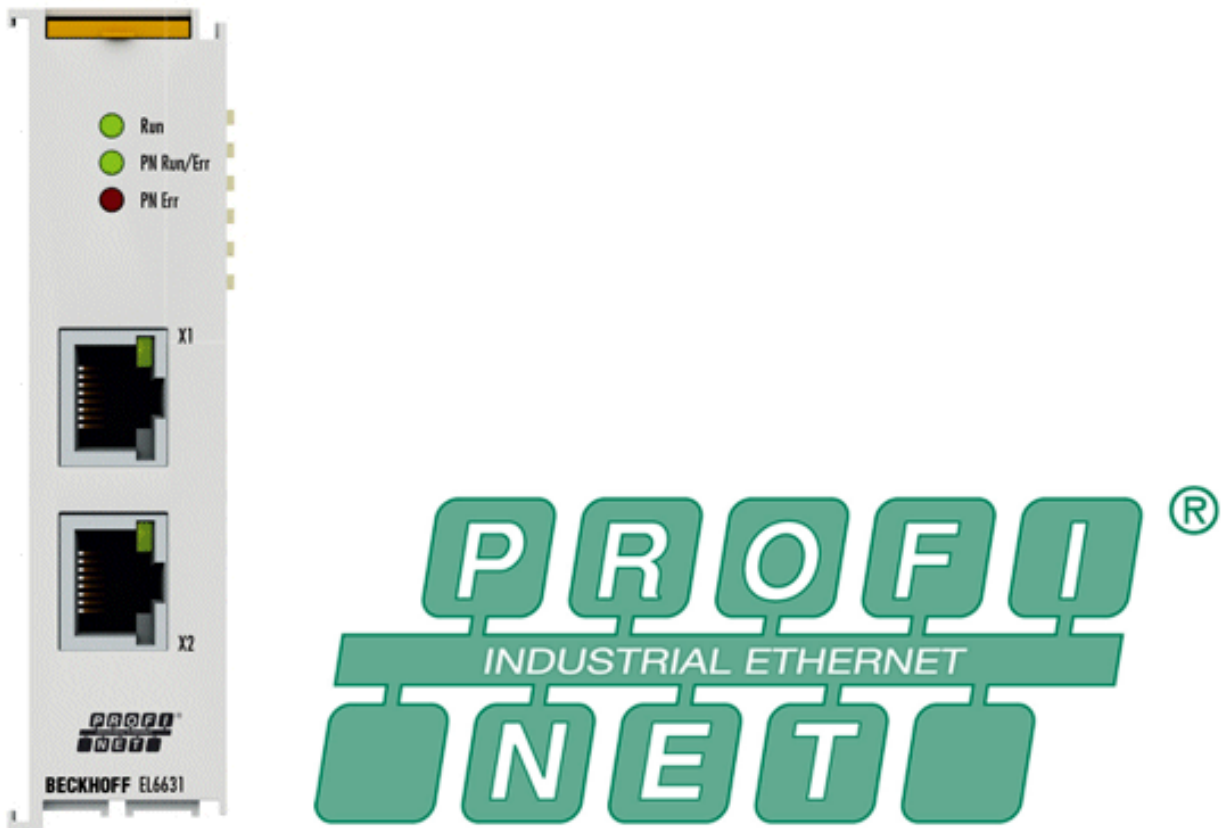


Fig. 4: EL6631

The EL6631-0010 PROFINET IO Device (Slave) Terminal enables simple exchange of data between EtherCAT and PROFINET IO. It is a device in the EtherCAT strand, which can consist of up to 65,535 devices. The EL6631-0010 has a 3-port switch. Two ports are fed to the outside on RJ-45 sockets. This allows the I/O stations to be structured as a line topology, as a result of which the wiring is simplified. The maximum distance between two devices is 100 m.

Protocols such as LLDP or SNMP can be used for network diagnostics.

## 2.2 EL6631-0010 - Technical data

Technical data	EL6631-0010
Bus system	PROFINET RT Device
Number of Ethernet ports	2
Ethernet interface	10BASE-T/100BASE-TX Ethernet with 2 x RJ45
Cable length	up to 100 m twisted pair
Data transfer rate	10/100 Mbit/s, IEEE 802.3u Auto negotiation, half or full duplex at 10 and 100 Mbit/s possible, automatic settings
Diagnostics	Status LEDs
Power supply	via the E-bus
Current consumption via E-bus	typ. 400 mA
Electrical isolation	500 V (E-Bus/Ethernet)
Bit width in process image	variable (max. 2 KB for inputs and outputs)
Configuration	via the TwinCAT System Manager
Weight	approx. 75 g
Permissible ambient temperature range during operation**)	0 °C ... + 55 °C (aligned in horizontal installation position) 0 °C ... + 45 °C (all other installation positions, see <a href="#">Note</a> <a href="#">▶</a> <a href="#">30</a> )
Permissible ambient temperature range during storage	-25 °C ... + 85 °C
Permissible relative humidity	95 %, no condensation
Dimensions (W x H x D)	approx. 26 mm x 100 mm x 52 mm (width aligned: 23 mm)
<a href="#">Mounting</a> <a href="#">▶</a> <a href="#">26</a>	on 35 mm mounting rail conforms to EN 60715
Vibration / shock resistance	conforms to EN 60068-2-6 / EN 60068-2-27
EMC immunity / emission	conforms to EN 61000-6-2 / EN 61000-6-4
Protection class	IP20
Installation position	see <a href="#">notice</a> <a href="#">▶</a> <a href="#">30</a>
Approvals / markings*)	CE, UKCA, EAC <a href="#">cULus</a> <a href="#">▶</a> <a href="#">24</a> , <a href="#">ATEX</a> <a href="#">▶</a> <a href="#">21</a> , <a href="#">IECEX</a> <a href="#">▶</a> <a href="#">22</a>

\*) Real applicable approvals/markings see type plate on the side (product marking).

\*\*) If there is another terminal with high power loss (e.g. E-bus current >250 mA) next to the terminal, an [EL9xx0](#) power feed or separation terminal must be connected in between (recommendation: terminal with E-bus ASIC).

### Ex markings

Standard	Marking
ATEX	II 3 G Ex nA IIC T4 Gc
IECEX	Ex nA IIC T4 Gc

## 2.3 EL6631-0010 - LEDs

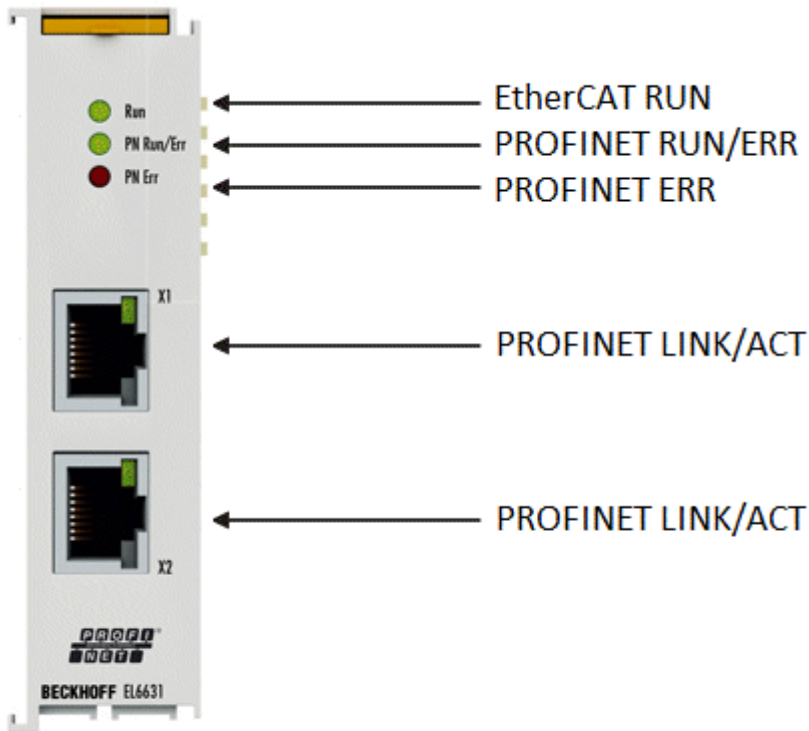


Fig. 5: Tc\_EL6631\_LEDs

### LEDs for EtherCAT diagnosis

LED	Display	Description
RUN	green	off
		flashing 200 ms
		off (1 s) on (200 ms)
		on
		State of the EtherCAT State Machine: <b>INIT</b> = initialization of the terminal; <b>BOOTSTRAP</b> = function for terminal firmware updates State of the EtherCAT State Machine: <b>PREOP</b> = function for mailbox communication and different standard-settings set State of the EtherCAT State Machine: <b>SAFEOP</b> = verification of the sync manager channels and the distributed clocks. Outputs remain in safe state State of the EtherCAT State Machine: <b>OP</b> = normal operating state; mailbox and process data communication is possible

### LED diagnosis PROFINET RUN/Err

Colors green	Colors red	Meaning
on	off	EL terminal is parameterized
off (1 s) on (200 ms)	off	EL6631-0010 does not have an IP address
flashing 200 ms	off	EL6631-0010 still has not received a PROFINET name
off	flashing 200 ms	Terminal starts

**LED diagnosis PROFINET Err**

Colors green	Colors red	Meaning
on	off	EL terminal is exchanging data
flashing 200 ms	off	EL terminal is exchanging data, but the provider status is stopped
off (1 s) on (200 ms)	off	EL terminal is exchanging data, but the modules are different
off	flashing 500 ms	No AR established, establishment of connection has not been initialized
flashing 500 ms	flashing 500 ms	Identify EL terminal through PROFINET "flashing"

**LEDs starting up**

Run	PN Run/Err	PN Err	Meaning
off	off	off	No electrical voltage connected to E-bus. The EL6631-0010 must be exchanged if EtherCAT terminals behind it need to function.
off	off	red on	EL terminal is starting up; after approx. 10 seconds, the LED should go out. If this does not happen, the EL6631-0010 module must be exchanged.

## 3 Mounting and wiring

### 3.1 Instructions for ESD protection

#### NOTICE

##### **Destruction of the devices by electrostatic discharge possible!**

The devices contain components at risk from electrostatic discharge caused by improper handling.

- When handling the components, ensure that there is no electrostatic discharge; also avoid touching the spring contacts directly (see illustration).
- Contact with highly insulating materials (synthetic fibers, plastic films, etc.) should be avoided when handling components at the same time.
- When handling the components, ensure that the environment (workplace, packaging and persons) is properly earthed.
- Each bus station must be terminated on the right-hand side with the [EL9011](#) or [EL9012](#) end cap to ensure the degree of protection and ESD protection.



Fig. 6: Spring contacts of the Beckhoff I/O components

## 3.2 Explosion protection

### 3.2.1 ATEX - Special conditions (standard temperature range)

#### ⚠ WARNING

**Observe the special conditions for the intended use of Beckhoff fieldbus components with standard temperature range in potentially explosive areas (directive 2014/34/EU)!**

- The certified components are to be installed in a suitable housing that guarantees a protection class of at least IP54 in accordance with EN 60079-15! The environmental conditions during use are thereby to be taken into account!
- For dust (only the fieldbus components of certificate no. KEMA 10ATEX0075 X Issue 9): The equipment shall be installed in a suitable enclosure providing a degree of protection of IP54 according to EN 60079-31 for group IIIA or IIIB and IP6X for group IIIC, taking into account the environmental conditions under which the equipment is used!
- If the temperatures during rated operation are higher than 70°C at the feed-in points of cables, lines or pipes, or higher than 80°C at the wire branching points, then cables must be selected whose temperature data correspond to the actual measured temperature values!
- Observe the permissible ambient temperature range of 0 to 55°C for the use of Beckhoff fieldbus components standard temperature range in potentially explosive areas!
- Measures must be taken to protect against the rated operating voltage being exceeded by more than 40% due to short-term interference voltages!
- The individual terminals may only be unplugged or removed from the Bus Terminal system if the supply voltage has been switched off or if a non-explosive atmosphere is ensured!
- The connections of the certified components may only be connected or disconnected if the supply voltage has been switched off or if a non-explosive atmosphere is ensured!
- The fuses of the KL92xx/EL92xx power feed terminals may only be exchanged if the supply voltage has been switched off or if a non-explosive atmosphere is ensured!
- Address selectors and ID switches may only be adjusted if the supply voltage has been switched off or if a non-explosive atmosphere is ensured!

#### Standards

The fundamental health and safety requirements are fulfilled by compliance with the following standards:

- EN 60079-0:2012+A11:2013
- EN 60079-15:2010
- EN 60079-31:2013 (only for certificate no. KEMA 10ATEX0075 X Issue 9)

#### Marking

The Beckhoff fieldbus components with standard temperature range certified according to the ATEX directive for potentially explosive areas bear one of the following markings:



**II 3G KEMA 10ATEX0075 X Ex nA IIC T4 Gc Ta: 0 ... +55°C**

II 3D KEMA 10ATEX0075 X Ex tc IIIC T135°C Dc Ta: 0 ... +55°C  
(only for fieldbus components of certificate no. KEMA 10ATEX0075 X Issue 9)

or



**II 3G KEMA 10ATEX0075 X Ex nA nC IIC T4 Gc Ta: 0 ... +55°C**

II 3D KEMA 10ATEX0075 X Ex tc IIIC T135°C Dc Ta: 0 ... +55°C  
(only for fieldbus components of certificate no. KEMA 10ATEX0075 X Issue 9)

### 3.2.2 IECEx - Special conditions

#### WARNING

#### Observe the special conditions for the intended use of Beckhoff fieldbus components in potentially explosive areas!

- For gas: The equipment shall be installed in a suitable enclosure providing a degree of protection of IP54 according to IEC 60079-15, taking into account the environmental conditions under which the equipment is used!
- For dust (only the fieldbus components of certificate no. IECEx DEK 16.0078X Issue 3): The equipment shall be installed in a suitable enclosure providing a degree of protection of IP54 according to EN 60079-31 for group IIIA or IIIB and IP6X for group IIIC, taking into account the environmental conditions under which the equipment is used!
- The equipment shall only be used in an area of at least pollution degree 2, as defined in IEC 60664-1!
- Provisions shall be made to prevent the rated voltage from being exceeded by transient disturbances of more than 119 V!
- If the temperatures during rated operation are higher than 70°C at the feed-in points of cables, lines or pipes, or higher than 80°C at the wire branching points, then cables must be selected whose temperature data correspond to the actual measured temperature values!
- Observe the permissible ambient temperature range for the use of Beckhoff fieldbus components in potentially explosive areas!
- The individual terminals may only be unplugged or removed from the Bus Terminal system if the supply voltage has been switched off or if a non-explosive atmosphere is ensured!
- The connections of the certified components may only be connected or disconnected if the supply voltage has been switched off or if a non-explosive atmosphere is ensured!
- Address selectors and ID switches may only be adjusted if the supply voltage has been switched off or if a non-explosive atmosphere is ensured!
- The front hatch of certified units may only be opened if the supply voltage has been switched off or a non-explosive atmosphere is ensured!

#### Standards

The fundamental health and safety requirements are fulfilled by compliance with the following standards:

- EN 60079-0:2011
- EN 60079-15:2010
- EN 60079-31:2013 (only for certificate no. IECEx DEK 16.0078X Issue 3)

#### Marking

Beckhoff fieldbus components that are certified in accordance with IECEx for use in areas subject to an explosion hazard bear the following markings:

Marking for fieldbus components of certificate no. IECEx DEK 16.0078X Issue 3:	<b>IECEx DEK 16.0078 X</b>
	<b>Ex nA IIC T4 Gc</b>
	<b>Ex tc IIIC T135°C Dc</b>

Marking for fieldbus components of certificates with later issues:	<b>IECEx DEK 16.0078 X</b>
	<b>Ex nA IIC T4 Gc</b>



### 3.2.3 Continulative documentation for ATEX and IECEx

#### NOTICE



#### Continulative documentation about explosion protection according to ATEX and IECEx

Pay also attention to the continuative documentation

#### **Ex. Protection for Terminal Systems**

Notes on the use of the Beckhoff terminal systems in hazardous areas according to ATEX and IECEx,

that is available for [download](#) within the download area of your product on the Beckhoff homepage [www.beckhoff.com](http://www.beckhoff.com)!

### 3.3 UL notice

#### ⚠ CAUTION



#### Application

Beckhoff EtherCAT modules are intended for use with Beckhoff's UL Listed EtherCAT System only.

#### ⚠ CAUTION



#### Examination

For cULus examination, the Beckhoff I/O System has only been investigated for risk of fire and electrical shock (in accordance with UL508 and CSA C22.2 No. 142).

#### ⚠ CAUTION



#### For devices with Ethernet connectors

Not for connection to telecommunication circuits.

#### Basic principles

UL certification according to UL508. Devices with this kind of certification are marked by this sign:



### 3.4 Note - power supply

**⚠ WARNING****Power supply from SELV / PELV power supply unit!**

SELV / PELV circuits (safety extra-low voltage / protective extra-low voltage) according to IEC 61010-2-201 must be used to supply this device.

Notes:

- SELV / PELV circuits may give rise to further requirements from standards such as IEC 60204-1 et al, for example with regard to cable spacing and insulation.
- A SELV supply provides safe electrical isolation and limitation of the voltage without a connection to the protective conductor, a PELV supply also requires a safe connection to the protective conductor.

### 3.5 Mounting and demounting - traction lever unlocking

The terminal modules are fastened to the assembly surface with the aid of a 35 mm mounting rail (e. g. mounting rail TH 35-15).

#### **i** Fixing of mounting rails

The locking mechanism of the terminals and couplers extends to the profile of the mounting rail. At the installation, the locking mechanism of the components must not come into conflict with the fixing bolts of the mounting rail. To mount the recommended mounting rails under the terminals and couplers, you should use flat mounting connections (e.g. countersunk screws or blind rivets).

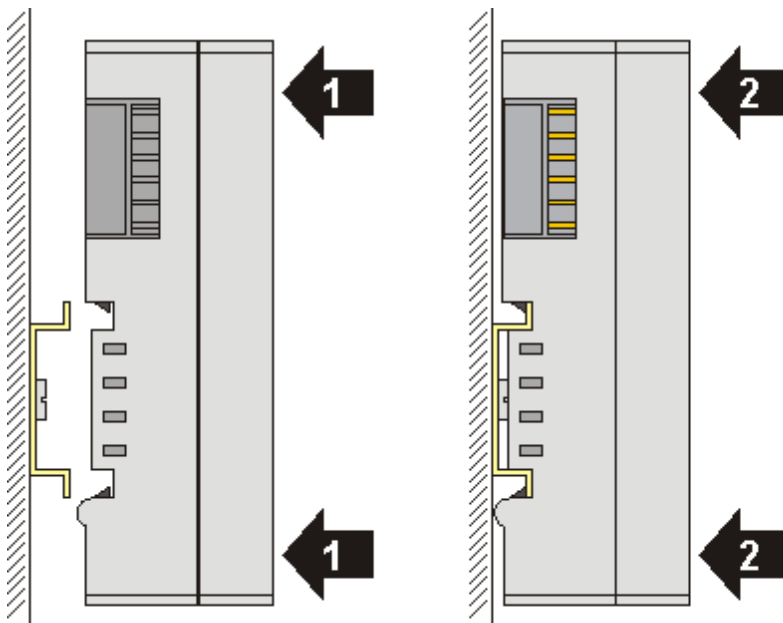
#### **⚠ WARNING**

#### **Risk of electric shock and damage of device!**

Bring the bus terminal system into a safe, powered down state before starting installation, disassembly or wiring of the Bus Terminals!

#### Mounting

- Fit the mounting rail to the planned assembly location.

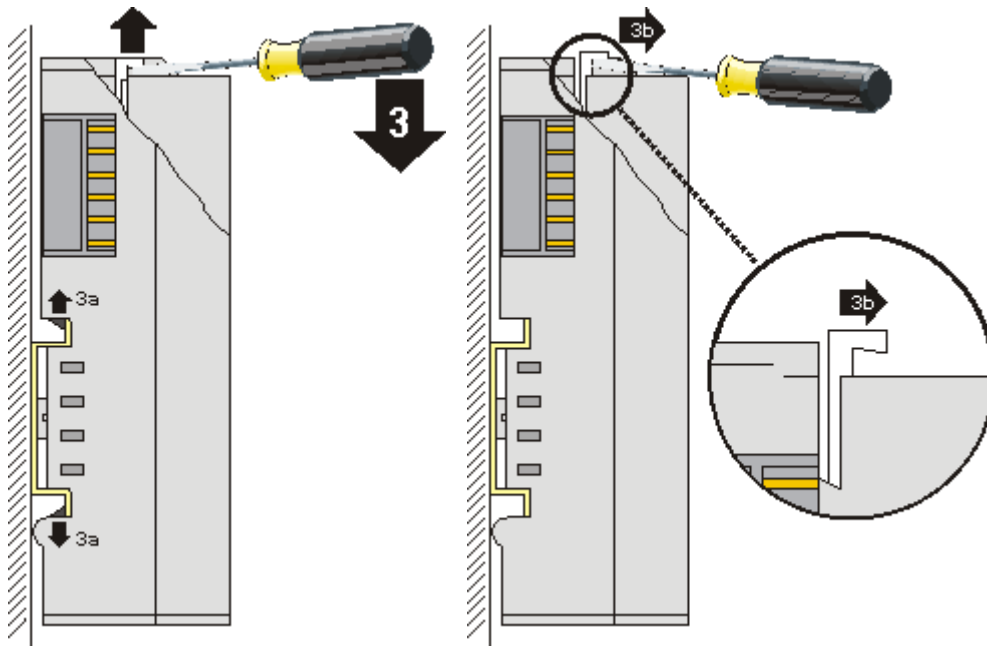


and press (1) the terminal module against the mounting rail until it latches in place on the mounting rail (2).

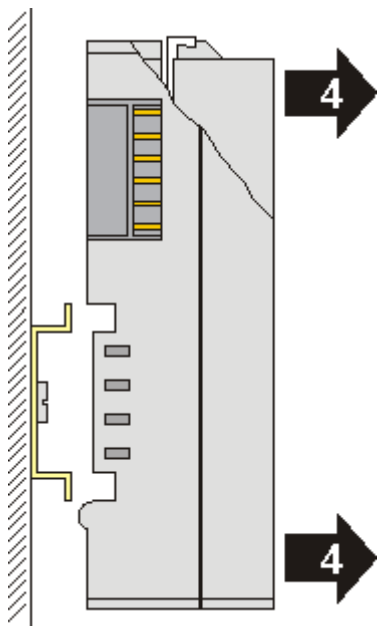
- Attach the cables.

#### Demounting

- Remove all the cables. Thanks to the KM/EM connector, it is not necessary to remove all the cables separately for this, but for each KM/EM connector simply undo 2 screws so that you can pull them off (fixed wiring)!
- Lever the unlatching hook on the left-hand side of the terminal module upwards with a screwdriver (3). As you do this
  - an internal mechanism pulls the two latching lugs (3a) from the top hat rail back into the terminal module,
  - the unlatching hook moves forwards (3b) and engages



- In the case 32 and 64 channel terminal modules (KMxxx4 and KMxxx8 or EMxxx4 and EMxxx8) you now lever the second unlatching hook on the right-hand side of the terminal module upwards in the same way.
- Pull (4) the terminal module away from the mounting surface.



### 3.6 Mounting and demounting - top front unlocking

The terminal modules are fastened to the assembly surface with the aid of a 35 mm mounting rail (e. g. mounting rail TH 35-15).

#### **i** Fixing of mounting rails

The locking mechanism of the terminals and couplers extends to the profile of the mounting rail. At the installation, the locking mechanism of the components must not come into conflict with the fixing bolts of the mounting rail. To mount the recommended mounting rails under the terminals and couplers, you should use flat mounting connections (e.g. countersunk screws or blind rivets).

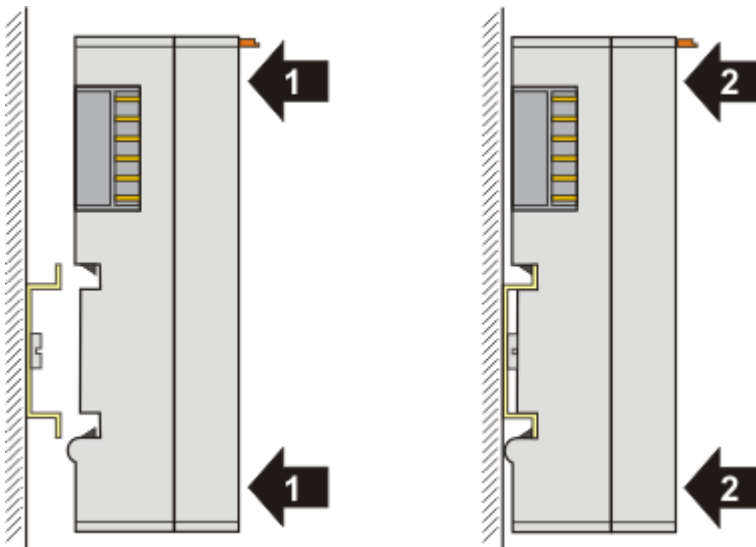
#### **⚠ WARNING**

#### **Risk of electric shock and damage of device!**

Bring the bus terminal system into a safe, powered down state before starting installation, disassembly or wiring of the Bus Terminals!

#### Mounting

- Fit the mounting rail to the planned assembly location.

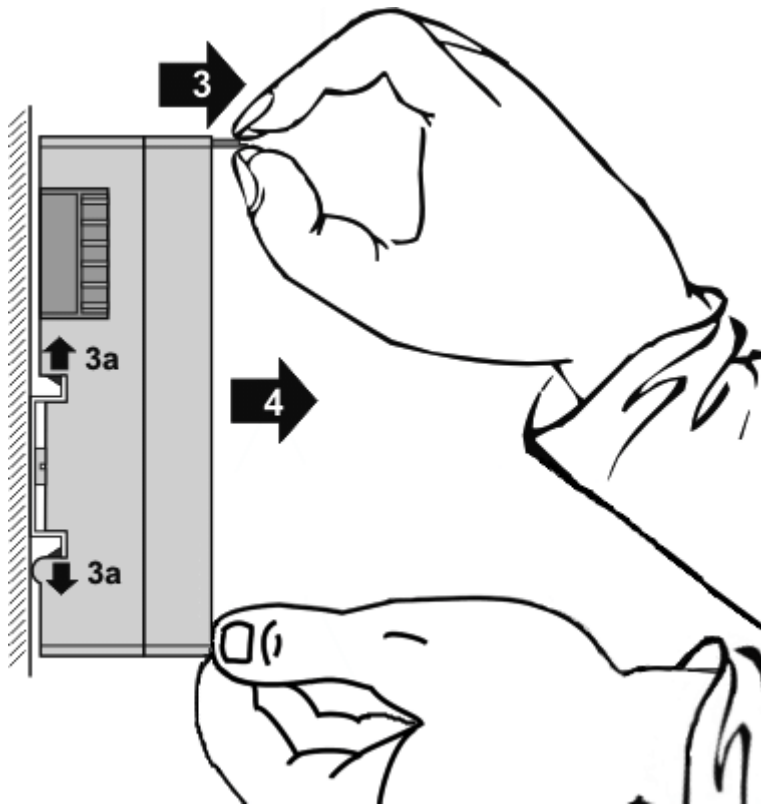


and press (1) the terminal module against the mounting rail until it latches in place on the mounting rail (2).

- Attach the cables.

#### Demounting

- Remove all the cables.
- Lever the unlatching hook back with thumb and forefinger (3). An internal mechanism pulls the two latching lugs (3a) from the top hat rail back into the terminal module.



- Pull (4) the terminal module away from the mounting surface. Avoid canting of the module; you should stabilize the module with the other hand, if required.



### 3.7 Installation positions

#### NOTICE

##### Constraints regarding installation position and operating temperature range

Please refer to the technical data for a terminal to ascertain whether any restrictions regarding the installation position and/or the operating temperature range have been specified. When installing high power dissipation terminals ensure that an adequate spacing is maintained between other components above and below the terminal in order to guarantee adequate ventilation!

##### Optimum installation position (standard)

The optimum installation position requires the mounting rail to be installed horizontally and the connection surfaces of the EL- / KL terminals to face forward (see Fig. "Recommended distances for standard installation position"). The terminals are ventilated from below, which enables optimum cooling of the electronics through convection. "From below" is relative to the acceleration of gravity.

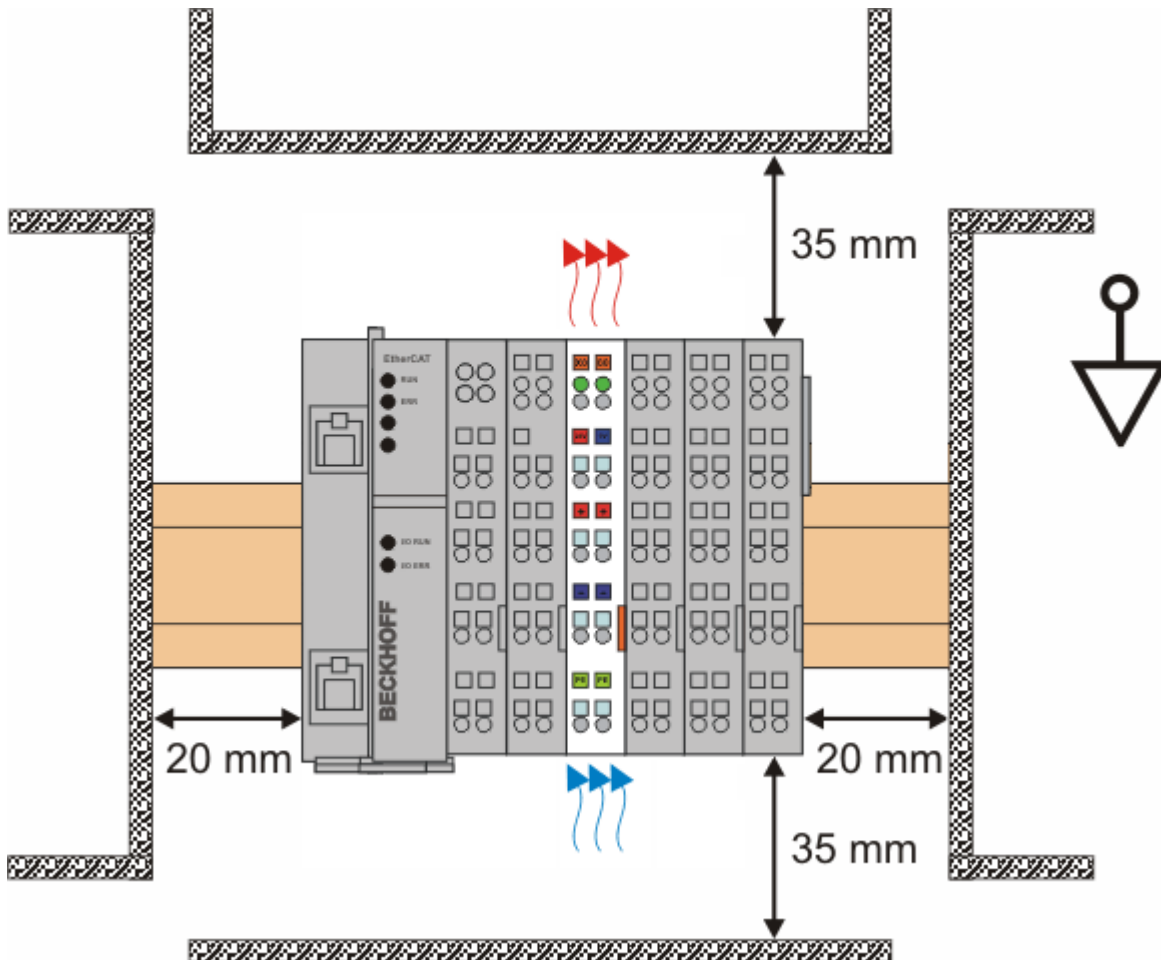


Fig. 7: Recommended distances for standard installation position

Compliance with the distances shown in Fig. "Recommended distances for standard installation position" is recommended.

##### Other installation positions

All other installation positions are characterized by different spatial arrangement of the mounting rail - see Fig "Other installation positions".

The minimum distances to ambient specified above also apply to these installation positions.

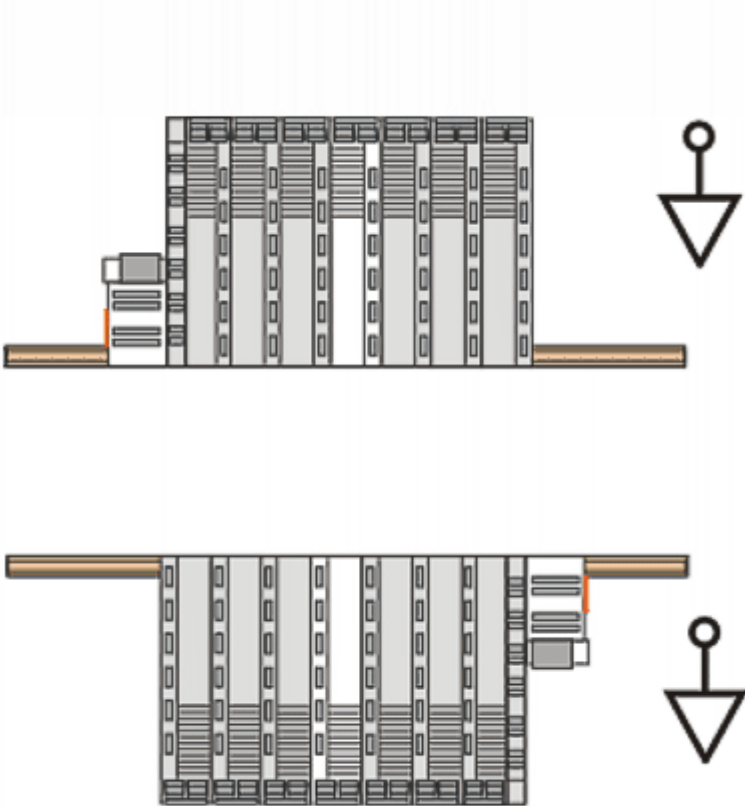
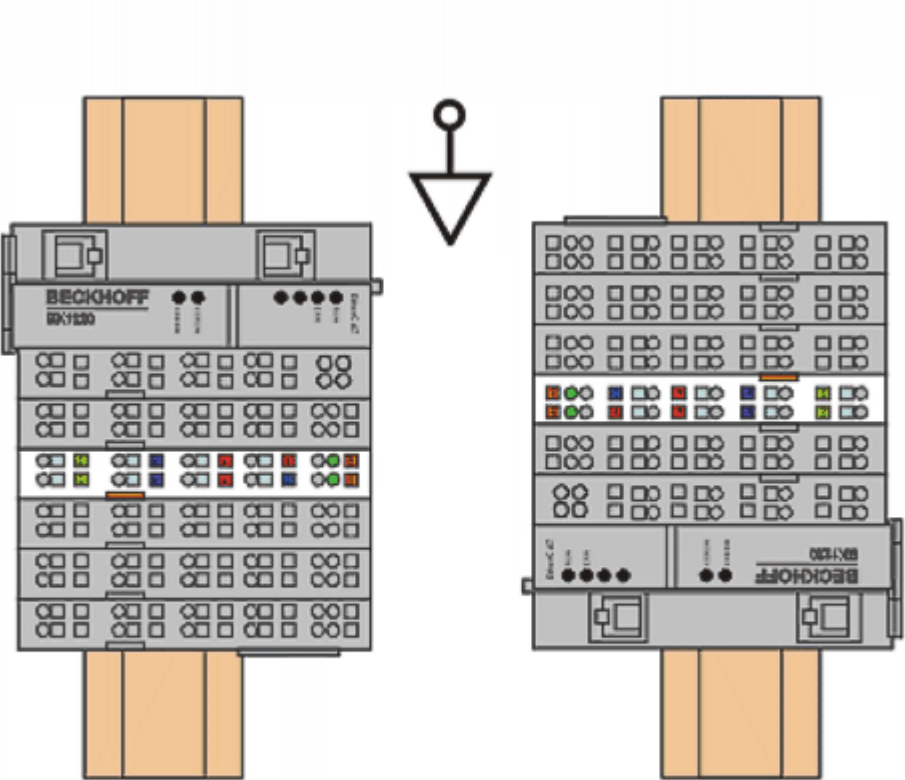


Fig. 8: Other installation positions

## 3.8 Note on shielding

### NOTICE

#### **Low-resistance shielding through external shield connection**

The shielding of the EL66xx is capacitively connected to the mounting rail.

If low-resistance shielding is desired or required, the shield must be connected to an external shield support (e.g. with the clamp strap for shield connection [ZB5800](#)).

### 3.9 Disposal



Products marked with a crossed-out wheeled bin shall not be discarded with the normal waste stream. The device is considered as waste electrical and electronic equipment. The national regulations for the disposal of waste electrical and electronic equipment must be observed.

## 4 Commissioning

### 4.1 PROFINET Features

#### 4.1.1 Alarms

##### PROFINET alarm

PROFINET alarms can also be transmitted through the ADS interface.

An ADS WRITE block is to be used for this.

ADS WRITE	Comment
AMSNETID	AMS Net ID of the PROFINET device
PORT	0xFFFF (if a virtual PROFINET device is used, the port number is formed from 0x1000 + the device ID)
Index Group	High word - alarm type (see PROFINET specification), low word - 0xF807
Index Offset	High word - slot number, low word - sub slot number

No further data is transmitted.

##### PROFINET alarm (examples)

ALARMS	Comment
0x0000	reserved
0x0001	Diagnosis appears
0x0002	Process
0x0003	Pull
0x0004	Plug
0x0005	Status
...	further diagnostic messages (see PROFINET specification)

#### 4.1.2 Record data

##### PROFINET record data

PROFINET record data can also be received directly by means of the PLC. To do this an "indication" is set in the PLC ( READINDICATION for reading and WRITEINDICATION for writing). The RECORD data structure has the following description:

```

WORD          RW;
  #define     PN_READ      0
  #define     PN_WRITE     1
WORD          NrOfAR;
DWORD         API;
WORD          Slot;
WORD          SubSlot;
PNIO_RECORD   RecordData;

```

##### Record Data

```

WORD          Index;
WORD          Length;           //zum Lesen auf 0
WORD          TransferSequence;
WORD          LengthOfAligned;

```

**Table of PROFINET RECORD DATA represented on ADS**

PROFINET	Length in bytes	Comment	ADS
-	String	AMS NET ID of the PROFINET device	AMSNETID
-	2	0xFFFF When the virtual interface is used, the port number is to be taken from the System Manager.	Port
Read/Write	2	0 - Read 1 - Write	Read - ReadIndication Write - WriteIndication
Number of AR	2	0x0000	-
API Application Process Identifier	4	0x00000000	-
Slot	2	Slot number 0x0000-0x7FFF	IndexOffset High Word
SubSlot	2	SubSlot number 0x0000-0x8FFF	IndexOffset Low Word
Record Data Index	2	0x0000-0x1FFF	IndexGroup Low Word
-	2	0x8000	IndexGroup High Word
Record Data Length	2	to "0" to read	LENGTH
Record Data Transfer Sequence	2	consecutive number	-
Record Data Length of Aligned	2	can be zero	-

Example for reading data; the PROFINET controller wants to read data from a Beckhoff device via the record data. In this example, all the RecIndex values are accepted, and will return the same data - 10 bytes that are located in the "Data" data array.

```

CASE i OF
0:  ADSREADIND (
      CLEAR:=FALSE ,
      VALID=> ,
      NETID=> ,
      PORT=> ,
      INVOKEID=> ,
      IDXGRP=> ,
      IDXOFFS=> ,
      LENGTH=> );
  IF ADSREADIND.VALID THEN
    IdxGroup:=ADSREADIND.IDXGRP;
    IdxOffset:=ADSREADIND.IDXOFFS ;
    i:=10;
  END_IF
10: ADSREADRES (
      NETID:=ADSREADIND.NETID,
      PORT:=ADSREADIND.PORT,
      INVOKEID:=ADSREADIND.INVOKEID ,
      RESULT:=0 ,
      LEN:=10 ,
      DATAADDR:=ADR(Data) ,
      RESPOND:=TRUE );
  i:=20;
  ADSREADIND(CLEAR:=TRUE);
20: i:=0;
  ADSREADRES(RESPOND:=FALSE);
END_CASE

```

### 4.1.3 Shared Device

The ProfiNET feature "Shared Device" is supported by the EL6631-0010, by the TwinCAT Supplement from version TC211 22.xx (= TC2 R3).

Shared Device features a function that allows two controllers to simultaneously access one device and, if applicable, the same process data image.

The difference to the use of the virtual device lies in the fact that, when creating a virtual device, a completely new device is generated (with its own name, MAC, IP, etc.). i.e. as a result the controller sees two separate devices and can establish two completely separate connections.

In the case of Shared Device, conversely, there is only ever one device. On the device side nothing needs to be engineered for this; the complete functionality is handled in the ProfiNET stack. A common example for this would be the use of the safety functionality. A "normal CONTROLLER" is assigned the "normal" inputs and outputs, while the F-CPU is assigned the safe I/Os. If the requested process image should overlap in both controllers, then the first AR (primary) that is established is given full read and write access to the submodule. The second AR (secondary) receives a corresponding ModuleDiff block at the submodules that are already occupied. If the primary AR is released, then the secondary AR receives an alarm now indicating that the requested submodule is free. The second controller now has the possibility, if it supports this, to re-parameterize the submodules and to adopt them into its AR.

## 4.1.4 Diagnostics

### 4.1.4.1 Status and Ctrl. flags

#### PROFINET status

The current status of the PROFINET communication can be monitored by means of PnIoBoxState.

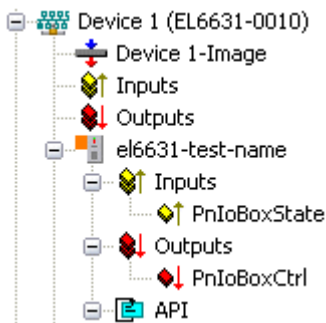


Fig. 9: TwinCAT tree: PROFINET status via "PnIoBoxState"

PnIoBoxState	Comment	Meaning
0x0001 (Bit 0)	Device is in I/O exchange	PROFINET device is exchanging data
0x0002 (Bit 1)	Device is blinking	PROFINET device is being searched for by identification
0x0004 (Bit 2)	Provider State 0=STOP, 1=RUN	The PROFINET controller is stopped
0x0008 (Bit 3)	Problem indicator 0=OK, 1=Error	The PROFINET device has encountered problems

In the absence of an error, the value of PnIoBoxState is "5" - in other words, bits 0 and 2 are set.

#### PROFINET control

PnIoBoxCtrl can be used for assigning names; only the low byte is to be used for this. The high byte must be 0x00.

### 4.1.4.2 Port diagnostics

Port diagnostics can be used to identify the neighboring PROFINET devices. The device's own port can also be diagnosed.

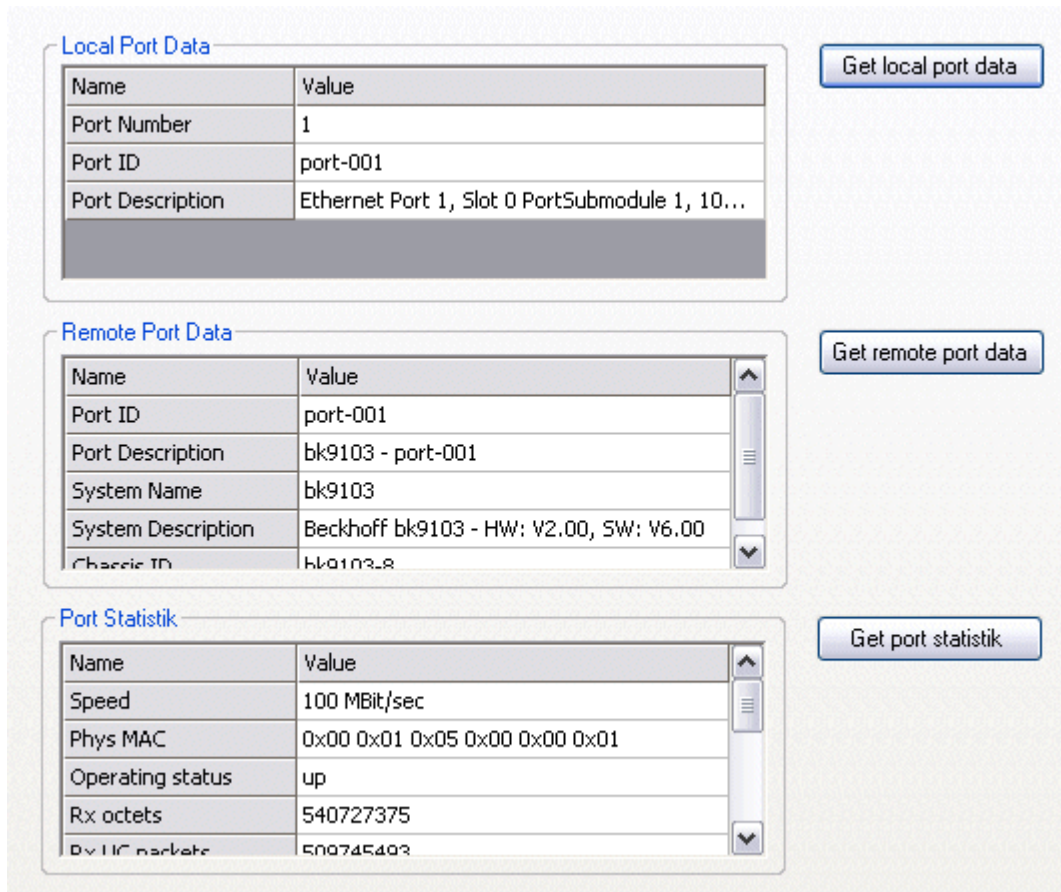


Fig. 10: Port diagnosis

### 4.1.4.3 Further diagnosis through the ADS interface

Additional diagnostic facilities are available through the ADS interface.

#### Read out the PROFINET name and the IP settings

An ADS READ block is to be used for this.

ADS WRITE	Comment
AMSNETID	AMS Net ID of the PROFINET device
PORT	0xFFFF (if a virtual PROFINET device is used, the port number is formed from 0x1000 + the device ID)
Index Group	High Word - 0x0000, Low Word - 0xF804
Index Offset	0x0000
Length	257

Data byte offset	Value	Comment
0..3	reserved	reserved
4..7	ARRAY4 of Byte	IP Address
8..11	ARRAY4 of Byte	Sub Net Mask
12..15	ARRAY4 of Byte	Default Gateway
16...x	STRING (max. length 240)	PROFINET Name



## Reading out the module difference

An ADS READ block is to be used for this.

ADS WRITE	Comment
AMSNETID	AMS Net ID des PROFINET Devices
PORT	0xFFFF (if a virtual PROFINET device is used, the port number is formed from 0x1000 + the device ID)
Index Group	High Word - 0x0000, Low Word - 0xF826
Index Offset	0x0000
Length	20882

The modules are identical if the length null is returned. The length can differ, depending on the type (see the ModuleDiffBlock PROFINET specification)

Example of how the data can be constructed:

Data byte offset	Value	Comment
0..3	UINT32	API
4..5	UINT16	Number of Modules
6..7	UINT16	Slot
8..11	UINT32	Module Ident (see GSDML File)
12..13	UINT16	Module State (0-noModul, 1- WrongModule, 2- ProperModule, 3- Substitute)
14..15	UINT16	NumberOfSubModules
16..17	UINT16	SubSlot

### 4.1.5 Submodules

A PROFINET device describes its data by modules, which in turn contain submodules. Each module has at least one submodule.

The EL6631-0010 can contain a maximum of 238 submodules. However, you should try not to exhaust the number of submodules, but keep it as small as possible.

For example, if you want to transfer 100 bytes, you can achieve this by using a module with 100 modules of 1 byte each or by using one module with 100 bytes. Here it is to be considered:

With PROFINET, each module has a provider and a consumer status (IOPS and IOCS). With 100 x 1 byte, the IOPS and IOCS in our example transport not only 100 byte but 300 byte. With 1 x 100 bytes, 102 bytes are then transferred.

When using the EL6631-0010 you have no disadvantage if you keep the number of modules small, or no advantage if you use 100 individual modules, because the EL6631-0010 is a hardware that only forwards the data to the EtherCAT master.

## 4.2 Technical data - PROFINET RT

Technical data	EL6631-0010
PROFINET Version	RT Class 1 ConformanceClassB
Number of device interfaces ) <sup>1</sup>	2
Topology	variable
Quantity of user data	1 Kbyte In/Out
Cycle time	≥ 1 ms

)<sup>1</sup> see the chapter on virtual PROFINET devices



### Switch functionality

The internal switch is deactivated when switching to bootstrap mode and is not available during a firmware update.

## 4.3 PROFINET device (EL6631-0010) integration under TwinCAT 2.11

This description applies to the PROFINET DEVICE EL6631-0010.

### 1. Integration of the EL6631-0010 into the EtherCAT network

Insert the EL6631-0010 into your TwinCAT project.

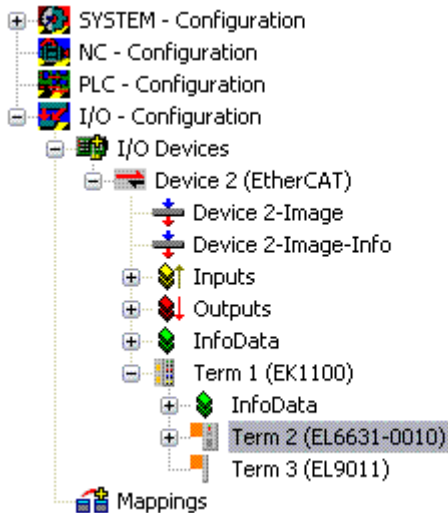


Fig. 11: Integration of the EL6631-0010 in the TwinCAT project

### 2. Integration of the PROFINET protocol

A PROFINET device must first be added - EL6631-0010.

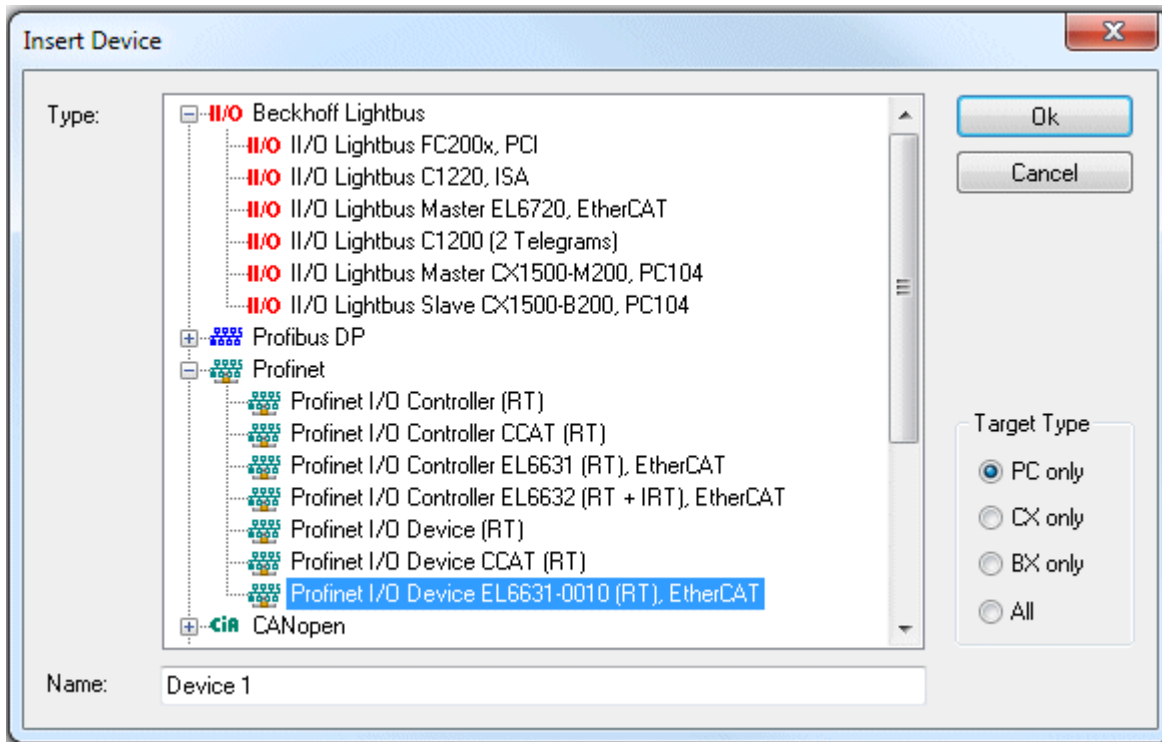


Fig. 12: "Insert Device" dialog

This interface must be assigned to an adaptor class. This is composed of the MAC and IP address of the network card. Use "Search" to look for the corresponding EtherCAT terminal. If there is only one terminal in the system, it will be configured automatically.

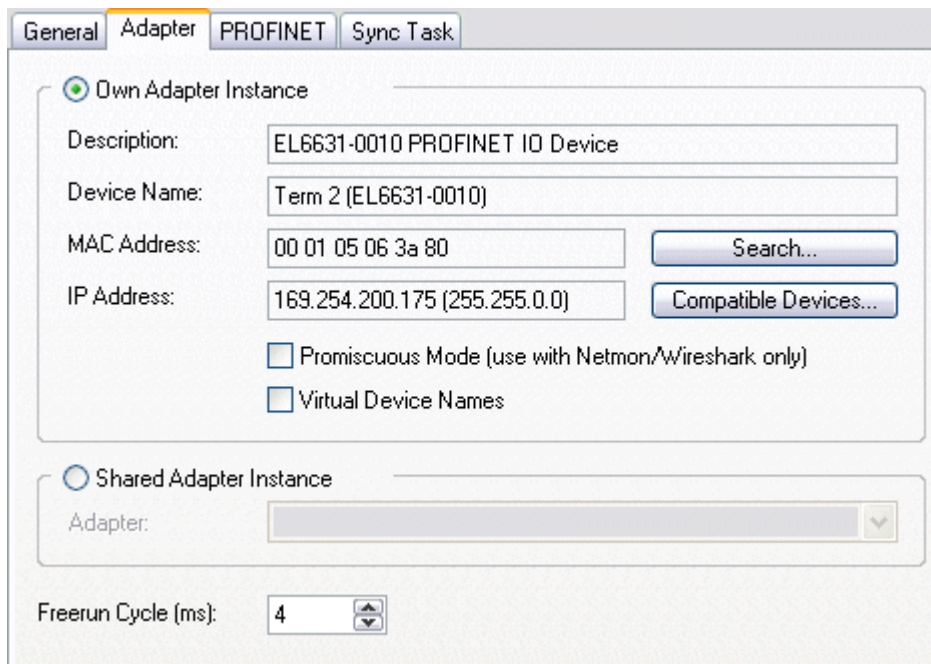


Fig. 13: "Adapter" tab

**MAC Address:**

MAC address of the Ethernet card (read-only)

**IP Address:**

IP address of the card (read-only). The IP address is read from the operating system, and has nothing to do with the PROFINET IP address that will be used later.

**Promiscuous Mode:**

Is not supported by the EL6631-0010

**Virtual Device Names:**

Is not supported by the EL6631-0010

**Shared Adapter Interface:**

Is not supported by the EL6631-0010

**Free Cycle:**

Cycle time in Config mode (no real-time). If TwinCAT is operated in FREERUN mode, care must be taken that the freerun cycle set is no longer than the PROFINET cycle!

If, e.g., a CX9000 is to be parameterized, the target system must first be accessed remotely; the corresponding Ethernet port can subsequently be selected.

The NetID used can be found under the "Protocol" tab. It is, e.g., necessary for an ADS access. Besides that, there is a possibility in the "Sync Task" tab to append a free-running task for PROFINET communication (this is recommended). This allows the RealTime communication to run independently of a PLC task. For performance reasons, however (e.g. in the case of a CX9000), the Sync Tasks can be dispensed with and standard mapping takes place, i.e. a PLC task, for example, must be running in order for PROFINET communication to be possible.

A PROFINET protocol is then added by means of the right mouse button. Precisely one TwinCAT device protocol can be appended!

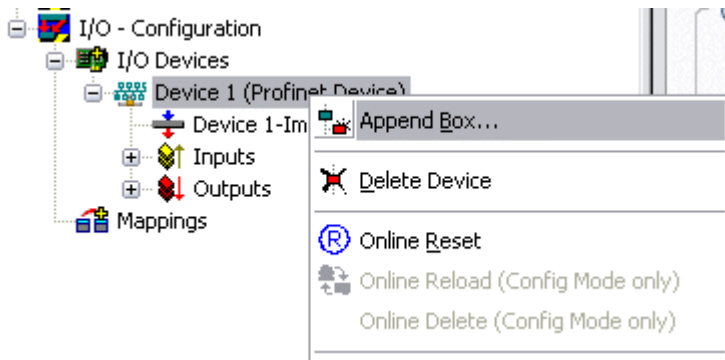


Fig. 14: Inserting a PROFINET device protocol

A Box in the form of a GSDML is then integrated (right mouse button on "PROFINET Device").

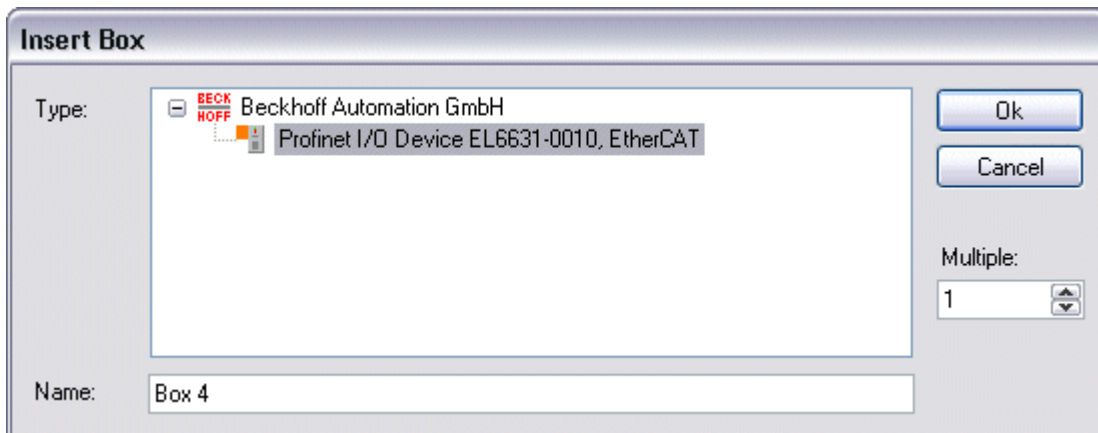


Fig. 15: "Insert Box" dialog

Now select the version to be used to integrate your EL6631-0010. The main difference between V2.0 and V2.2 lies in the support for sub-modules.

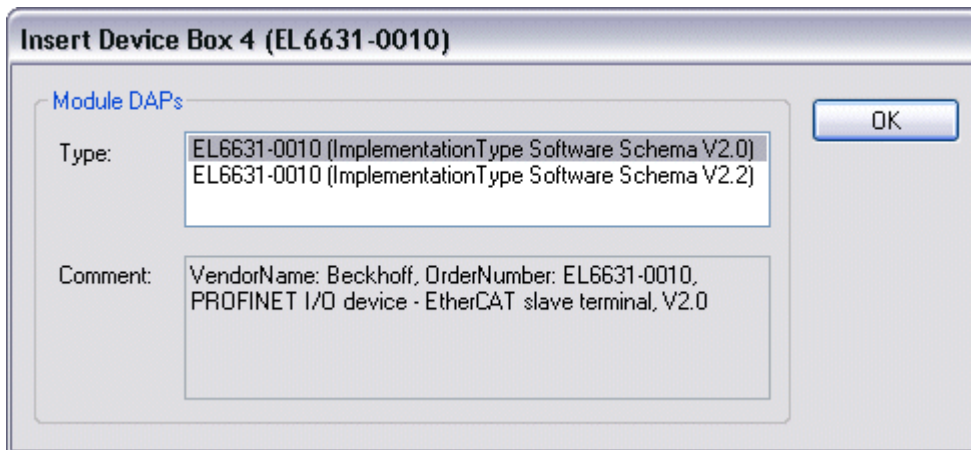


Fig. 16: EL6631-0010 selection with or without port diagnosis

In the first EL6631-0010 (according to V2.2) the ports, and therefore the port diagnosis, can be seen in the DAP. The following EL6631-0010 is integrated according to V2.0. No port diagnosis is possible here. The same version must be used in the master. Older PROFINET controllers cannot yet support Version 2.2, in which case you should use Version 2.0.

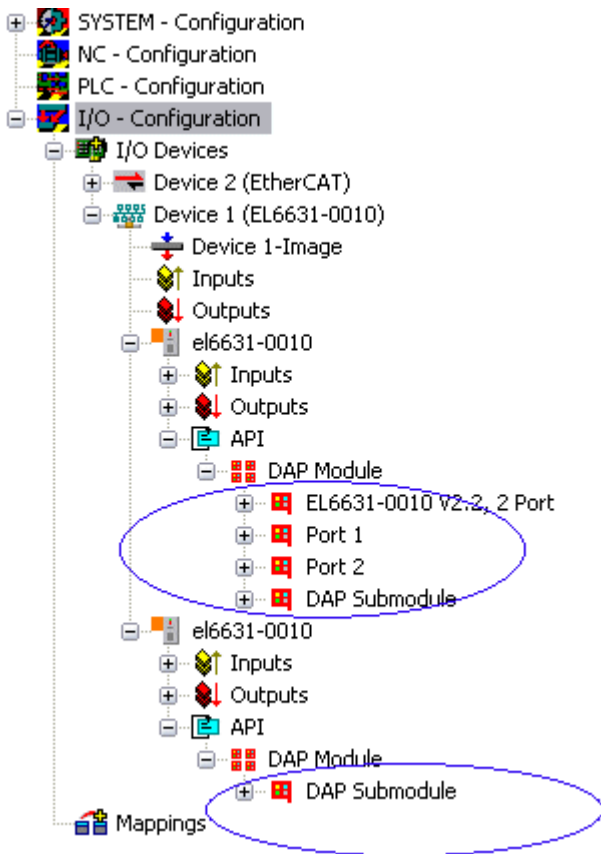


Fig. 17: Several PROFINET devices in the TwinCAT tree

**Virtual PROFINET device**

It is also possible in TwinCAT to configure a number of virtual PROFINET devices (a maximum of 7 in the PROFINET Device Supplement, and one additional device in the EL6631-0010). Each device is again to be viewed as its own adaptor, i.e. each virtual device is assigned a default MAC address from a reserved range. To avoid possible address conflicts, the MAC address of virtual devices can also be changed. The name which the device was given in the strand (or in the "General" tab) is also taken as a PROFINET station name following a restart. On the basis of different MAC addresses and names, a PROFINET controller can now distinguish several devices in the strand.

It is therefore possible to use 8 devices per Ethernet interface in the PROFINET Device Supplement, and therefore to communicate with 8 different PROFINET controllers. In the case of the EL6631-0010 it is 2 devices.

In PROFINET, different user profiles can be defined within a device (API - Application Process Instance). Precisely one API is permitted / supported for each device in TwinCAT.

In accordance with PROFINET, the DAP (Device Access Point) is always defined on slot 0. Device-specific data is defined in it. In accordance with PROFINET, several DAPs can be defined; however, in TwinCAT there is currently precisely one!

**3. Process data**

The process data can be inserted from slot 1. This takes place by integrating the desired module in the API. Each module (slot) has at present precisely one sub-module (sub-slot). The configuration of the modules and hence the creation of the process data image on the PROFINET side takes place by means of specifying data types / data widths (e.g. byte, word, dword, float 32).

The designation of the inputs and outputs always takes place in TwinCAT from the TwinCAT point of view, i.e. the inputs are from the PROFINET point of view (from the controller) the outputs! Therefore the data of the PROFINET I/O devices is represented as follows:

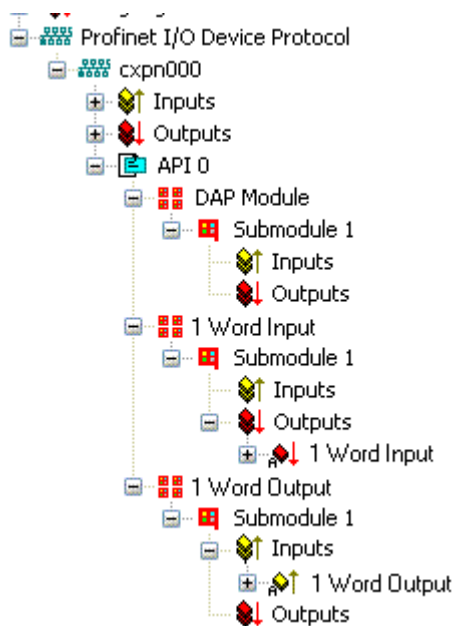


Fig. 18: Representation of the inputs/outputs of the PROFINET I/O device

This representation applies only to the TwinCAT PROFINET device, in the case of a TwinCAT PROFINET controller, the view will correlate again!

#### 4. General settings

The FrameID can be changed on the "PROFINET Devices" tab. However, the default settings suffice for normal operation!

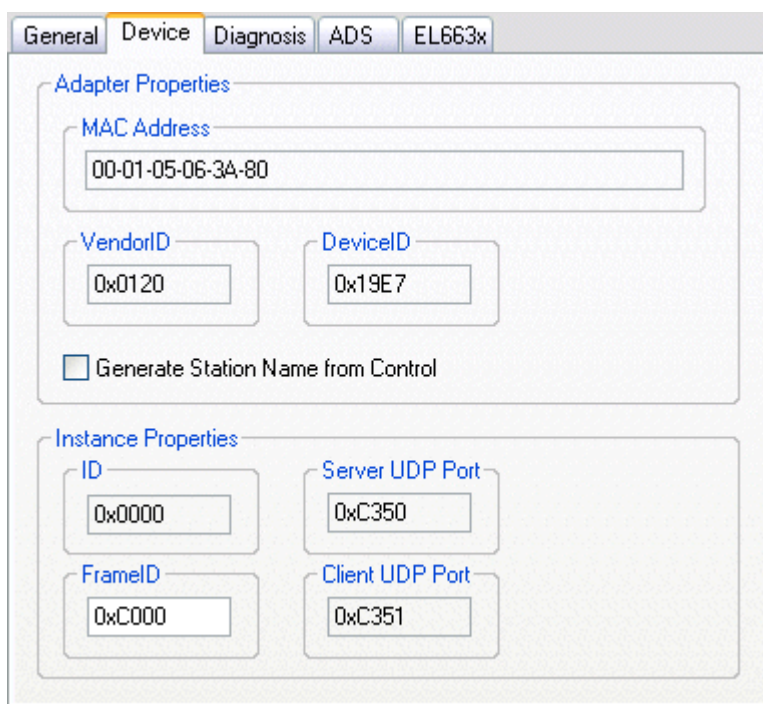


Fig. 19: "Device" tab

##### 4.1 PROFINET name assignment

When the EL6631-0010 is shipped it does not have a PROFINET name. It returns an empty string when the devices are searched.

There are several ways to assign a name to an EL6631-0010:

1. Assignment through the PROFINET controller
2. Assignment through the EtherCAT Master (assignment through the controller is then no longer possible)
3. Assignment through a link to the PLC program (assignment through the controller is then no longer possible)
4. Automatic device startup through topology specification is supported  
You can obtain more information from your PROFINET controller

**4.1.1 Assignment through the PROFINET controller**

In this case, the PROFINET controller assigns the name of the device. You can learn about this from the manufacturer of your PROFINET controller.

**4.1.2 Assignment by the EtherCAT Master**

Tick the "get PN station name from ECAT" to activate this.

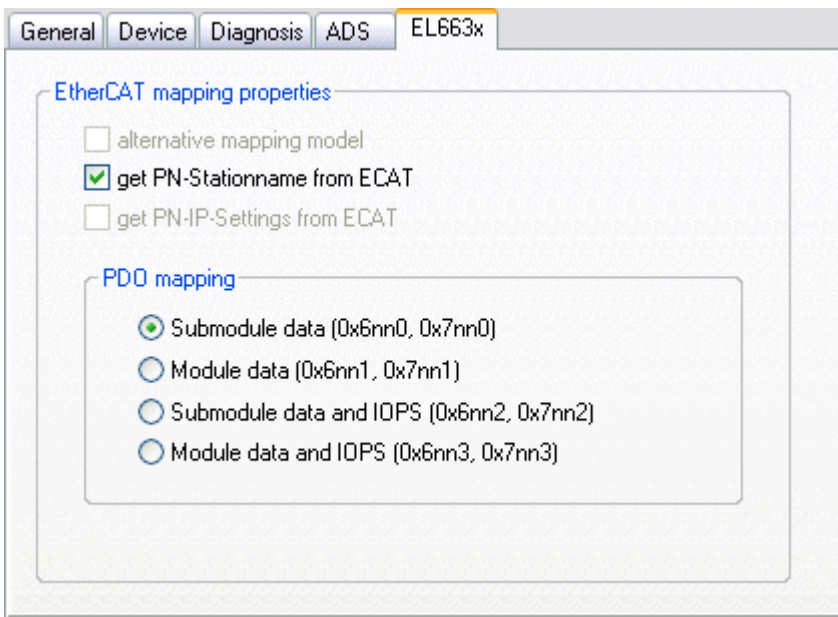


Fig. 20: "EL663x" tab

The name used in the System Manager tree is then used. In this case, for example, "el6631-test-name".

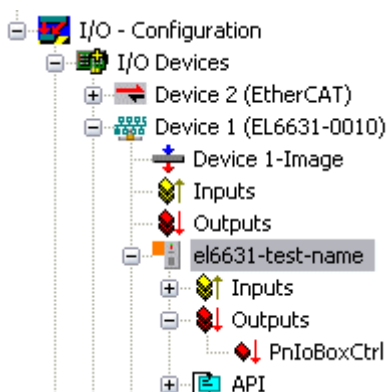


Fig. 21: TwinCAT tree: assigning a PROFINET station name

**4.1.3 Assignment through a link to the PLC program**

This is comparable with the DIP switches in the BK9103 and can be carried out via a PLC task. For activation, "Generate Station Name from Control" must be activated. For clarification, 000 will be appended to the previous tree name (default: "tcpnodevice").



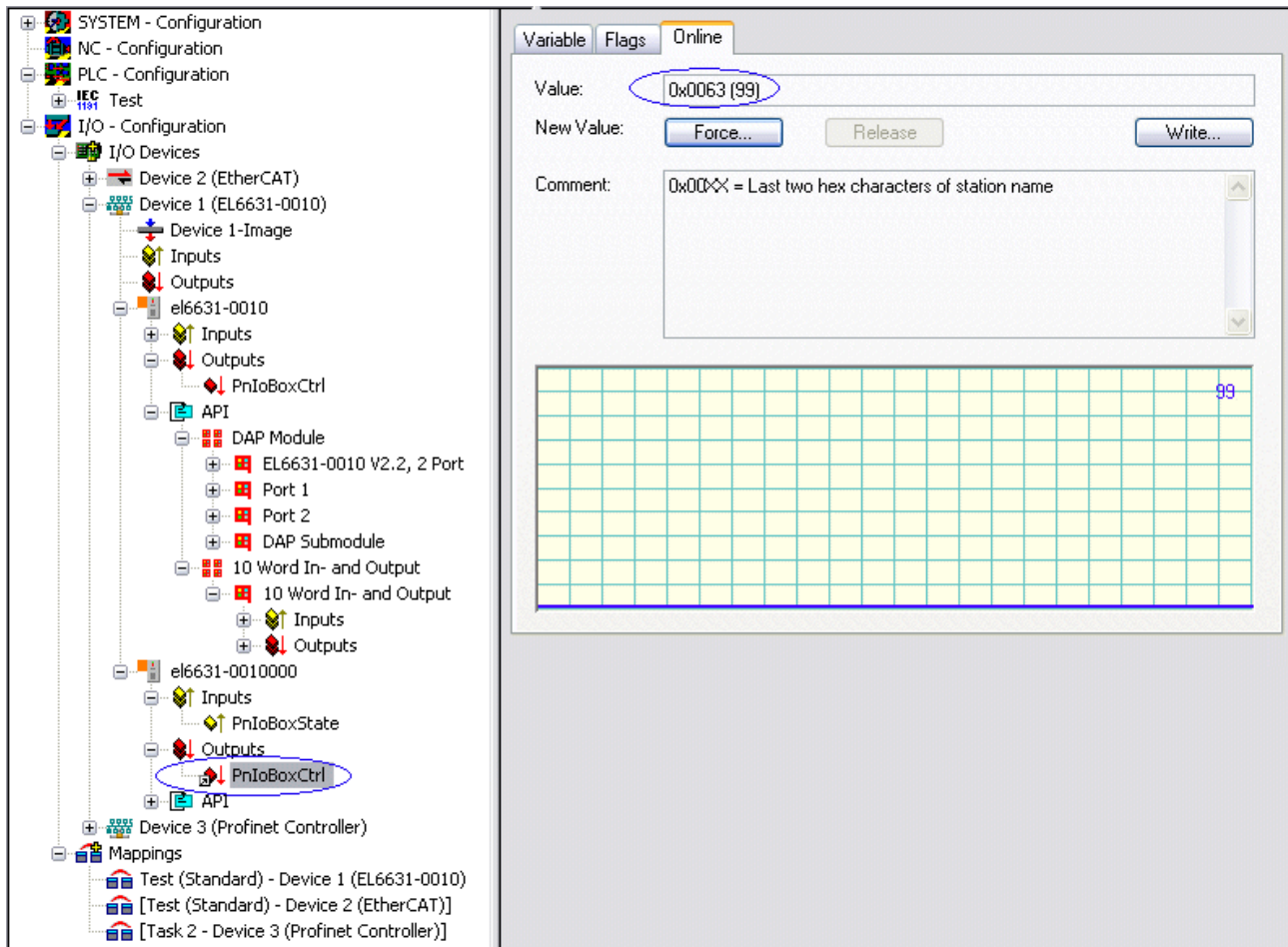


Fig. 22: Tree name in the TwinCAT tree

**i** **Tree name**

This tree name no longer corresponds to the PROFINET station name! The Ctrl WORD of the PROFINET protocol is used to help assign a name. This means that the number that is entered (range of values 0 - 255) is appended to the existing station name. In addition, the Ctrl WORD must be linked to a task. It is subsequently necessary to restart TwinCAT. If, e.g., the task now specifies a value of 11 for the linked Ctrl WORD, its previous station name will change from, for example, "tcpniodevice" to "tcpniodevice011". The current tree name remains "tcpniodevice000".

The current station names and the IP configuration used can be checked via the "PROFINET diagnosis" tab.

**4.2 Diagnostics**

The actual PROFINET name is displayed on the Diagnostics tab. The IP configuration is specified when the master boots up, and has the values that are assigned by the master. The "Module Difference" field is displayed if the specified configuration is not the same as the actual configuration. The field should be empty if there is no error.

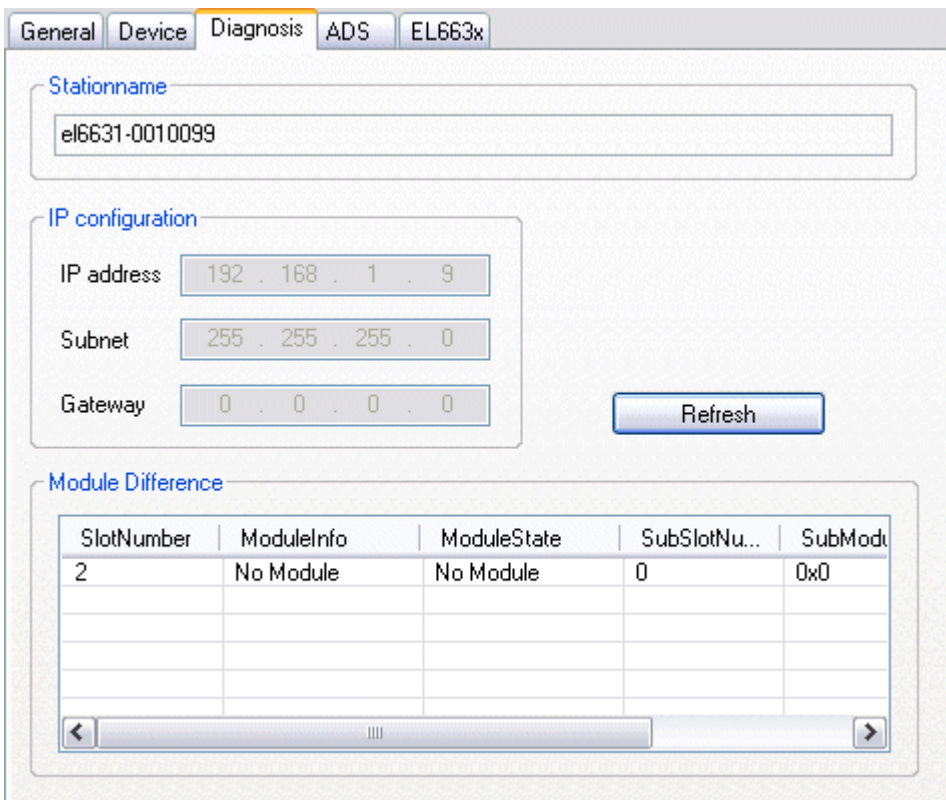


Fig. 23: "Diagnostics" tab

### 5. Cycle times

The device can be operated in the minimum cycle time of 1 ms defined by PROFINET!

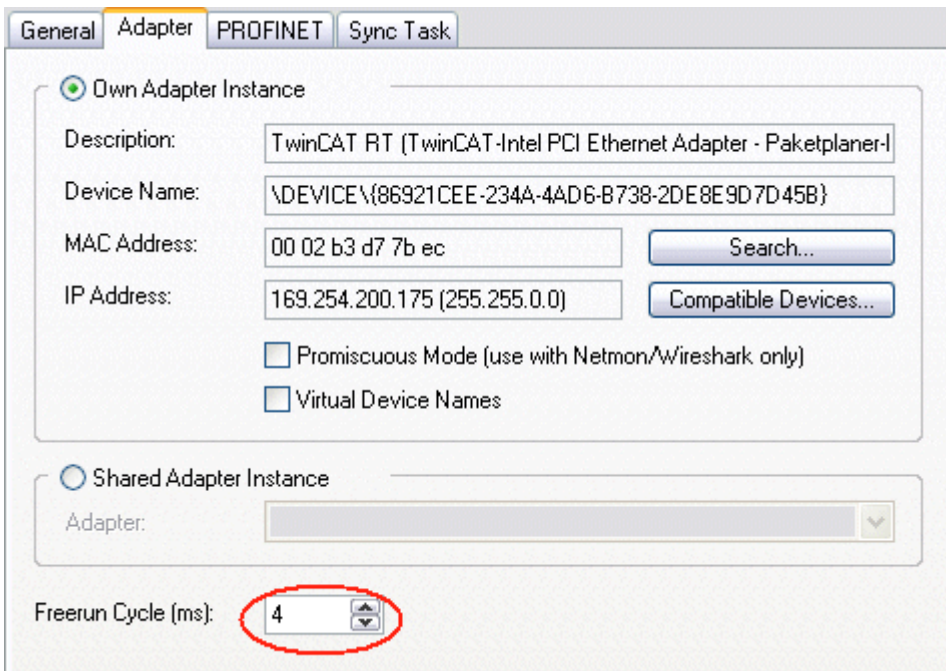


Fig. 24: "Adapter" tab, setting cycle time

If TwinCAT is to be operated in RUN mode, a task must be created. In the simplest case, this is the aforementioned SyncTask. The call time for the task must not be longer than the PROFINET cycle time! If a second task is created, e.g. for the PLC, this can also run more slowly.

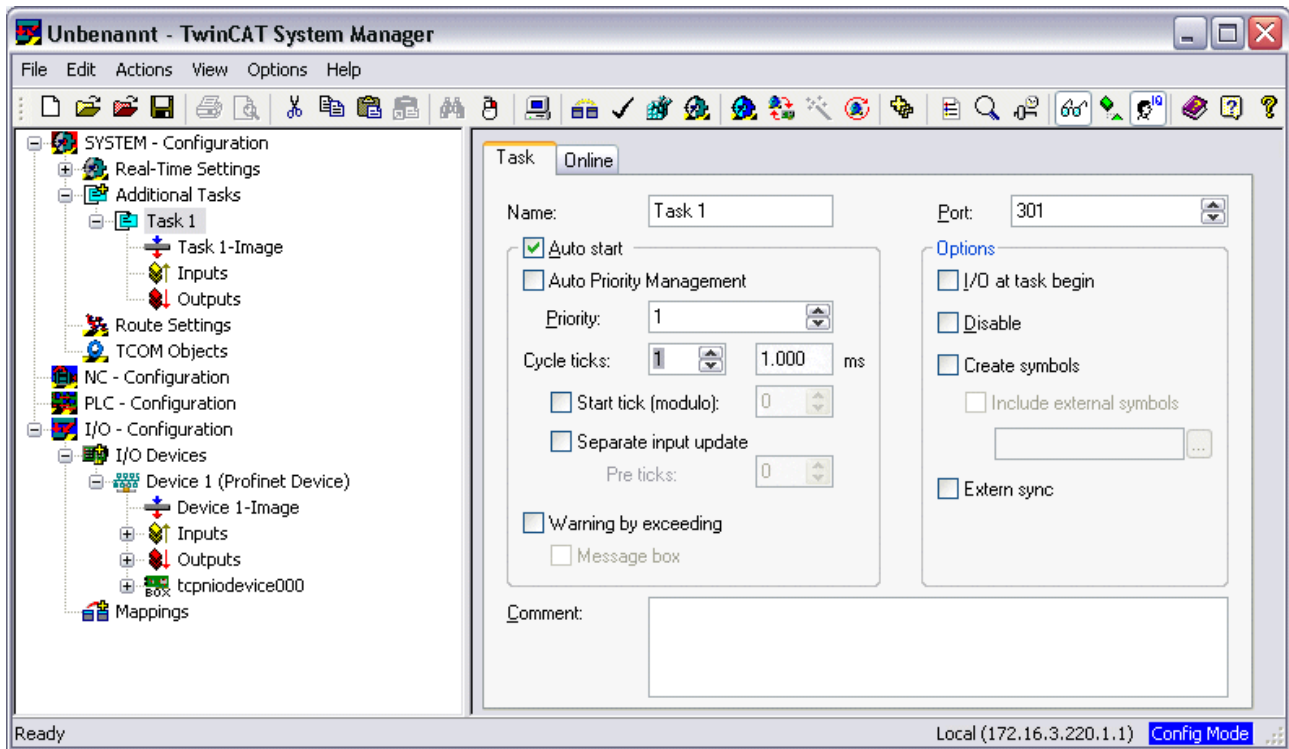


Fig. 25: Inserting a task

In the case of less powerful devices (e.g. CX1000, CX9000 with E-bus), the CPU load may reach its limits. However, the performance can be improved again by means of the following considerations/measures:

- Is it possible to work with just one PLC task?
- Does the cycle time have to be 1 ms?
- If two tasks are used, can the PLC task time be shortened?
- Will several virtual PROFINET devices be required?

**6. PDO Mapping**

The PDO mapping describes how the PROFINET data is to be represented in the EtherCAT. The "Submodule data" setting should be used if TwinCAT is used.

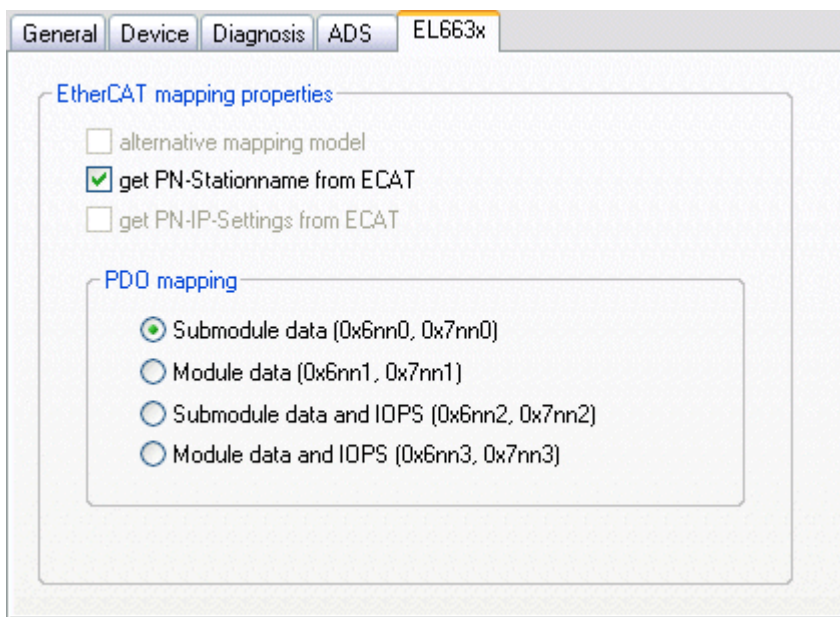


Fig. 26: "EL663x" tab

# 5 TwinCAT supplement

## 5.1 TwinCAT 2.10

### 5.1.1 PROFINET device integration under TwinCAT 2.10

**i** Installation

An installation version is no longer available for TwinCAT 2.10. Use TwinCAT V2.11 or contact [Beckhoff Support](#) [▶ 86].

#### 1. Integration of the PROFINET protocol

First of all, a real time Ethernet device must be added. This interface must be assigned to an adaptor class. This is composed of the MAC and IP address of the network card. Hence, e.g., if a CX9000 is to be parameterized, the target system must first be accessed remotely; the corresponding Ethernet port can subsequently be selected.

Thereafter, a PROFINET protocol is added by means of the right mouse button. Precisely one TwinCAT device protocol can be appended!

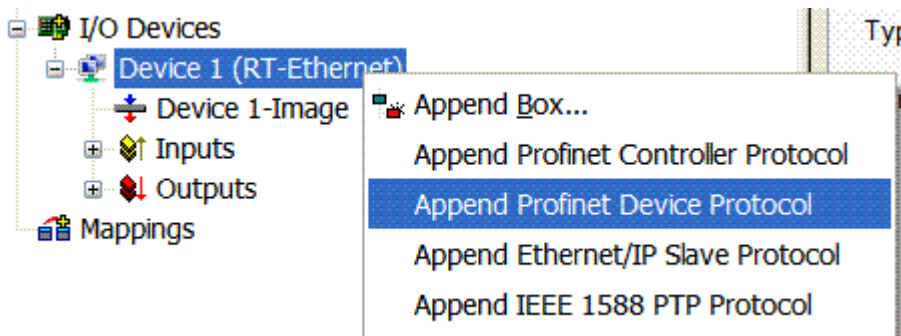


Fig. 27: Inserting a PROFINET device protocol

The NetID used can be found under the "Protocol" tab. It is, e.g., necessary for an ADS access. Besides that, there is a possibility in the "Sync Task" tab to append a free-running task for PROFINET communication (this is recommended). This allows the RealTime communication to run independently of a PLC task. For performance reasons, however (e.g. in the case of a CX9000), the Sync Task can be dispensed with and standard mapping takes place, i.e. a PLC task, for example, must be running in order for PROFINET communication to be possible.

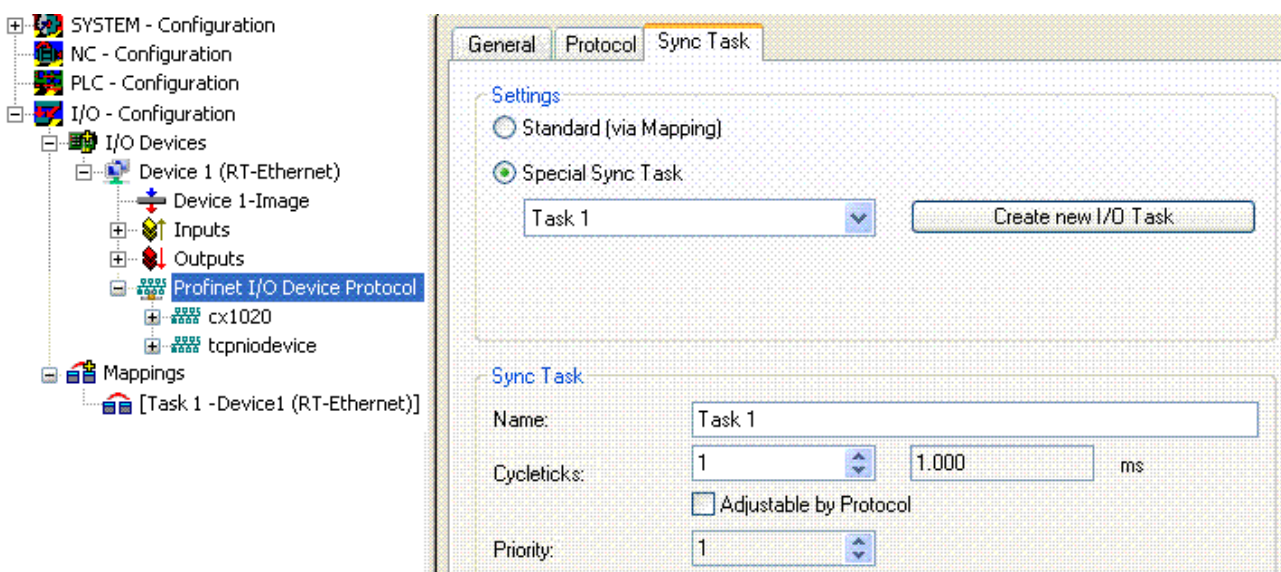


Fig. 28: "Sync Task" tab

Next, a box is integrated in the form of a GSDML (right click on "PROFINET I/O Device Protocol"). In TwinCAT it is also possible to configure several virtual PROFINET devices. Each device is again to be viewed as its own adaptor, i.e. each virtual device is assigned a default MAC address from a reserved range. To avoid possible address conflicts, the MAC address of virtual devices can also be changed. The name which the device was given in the strand (or in the "General" tab), is also taken as a PROFINET station name following a restart. On the basis of different MAC addresses and names, a PROFINET controller can now distinguish several devices in the strand. In turn, the individual virtual devices can then be linked with terminals from the E-bus, e.g. via a PLC task. As a result of this, e.g., several EL6601 terminals in the E-bus can be configured as individual PROFINET devices!

In PROFINET, different user profiles can be defined within a device (API - Application Process Instance). In TwinCAT, precisely one API is permitted / supported per device!

In accordance with PROFINET, the DAP (Device Access Point) is always defined on slot 0. Device-specific data is defined in it. In accordance with PROFINET, several DAPs can be defined; however, in TwinCAT there is currently precisely one!

## 2. Process data

The process data can be inserted from slot 1. This takes place by integrating the desired module in the API. Each module (slot) has at present precisely one sub-module (sub-slot). The configuration of the modules and hence the creation of the process data image on the PROFINET side takes place by means of specifying data types / data widths (e.g. byte, word, dword, float 32).

The designation of the inputs and outputs always takes place in TwinCAT from the TwinCAT point of view, i.e. the inputs are from the PROFINET point of view (from the controller) the outputs! Therefore the data of the PROFINET I/O devices is represented as follows:

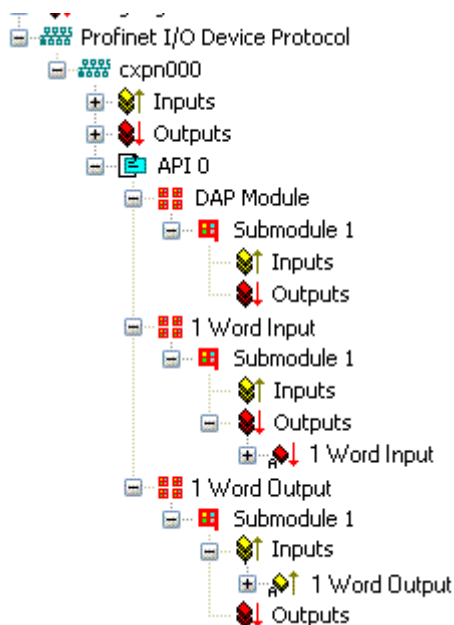


Fig. 29: Representation of the inputs/outputs of the PROFINET I/O device

This representation applies only to the TwinCAT PROFINET device, in the case of a TwinCAT PROFINET controller, the view will correlate again!

## 3. General settings

In the "PROFINET Device" tab, the Instance ID and the PROFINET Frame ID as well as the Client and Server UDP port can be changed. However, the default settings suffice for normal operation!



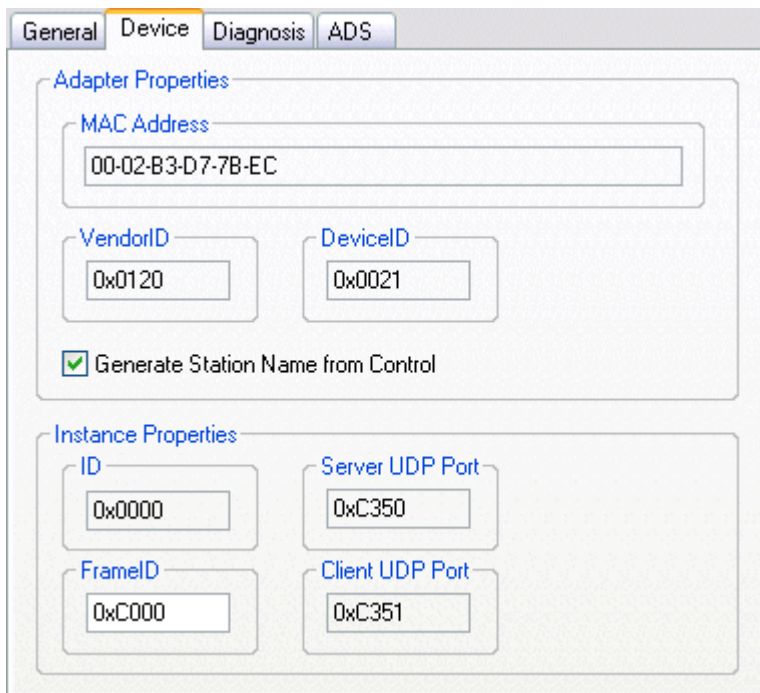


Fig. 30: "Device" tab

There is one further way of assigning the PROFINET station name. This is comparable with the DIP switches in the BK9103 and can be carried out via a PLC task. For activation, "Generate Station Name from Control" must be activated. For clarification, 000 will be appended to the previous tree name (default: "tcpnodevice").

### ● Tree name

**i** This tree name no longer corresponds to the PROFINET station name! The Ctrl WORD of the PROFINET protocol is used to help assign a name. This means that the number that is entered (range of values 0 - 255) is appended to the existing station name. In addition, the Ctrl WORD must be linked to a task. It is subsequently necessary to restart TwinCAT. If, e.g., the task now specifies a value of 11 for the linked Ctrl WORD, its previous station name will change from, for example, "tcpnodevice" to "tcpnodevice011". The current tree name remains "tcpnodevice000".

The current station names and the IP configuration used can be checked via the "PROFINET diagnosis" tab.

## 4. Cycle times

The device can be operated in the minimum cycle time of 1 ms defined by PROFINET!

If TwinCAT is operated in FREERUN mode, care must be taken that the freerun cycle set is no longer than the PROFINET cycle!

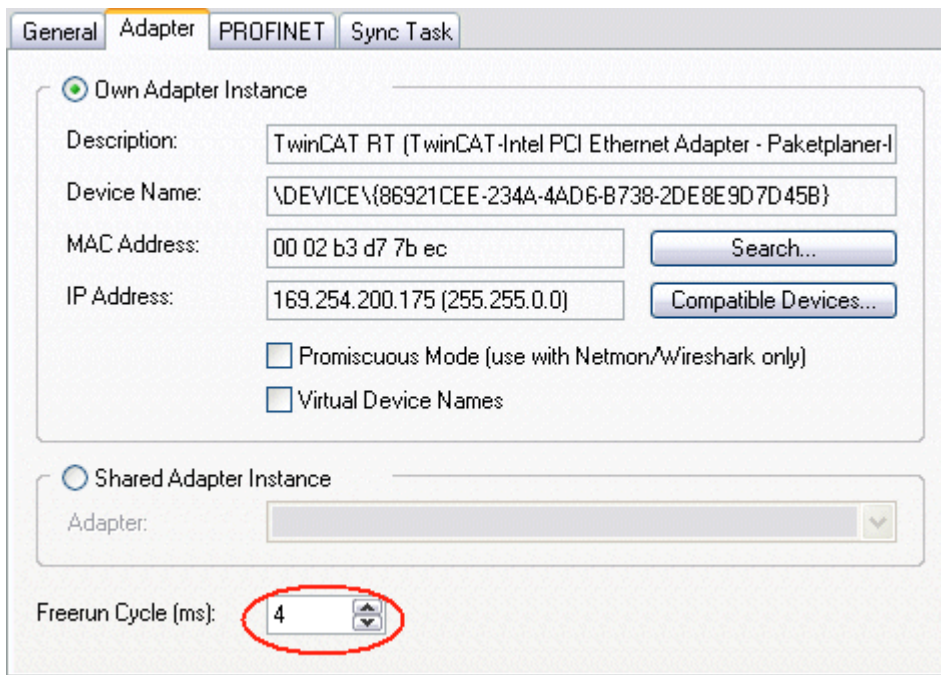


Fig. 31: "Adapter" tab

If TwinCAT is to be operated in RUN mode, a task must be created. In the simplest case, this is the aforementioned SyncTask. The call time for the task must not be longer than the PROFINET cycle time! If a second task is created, e.g. for the PLC, this can also run more slowly.

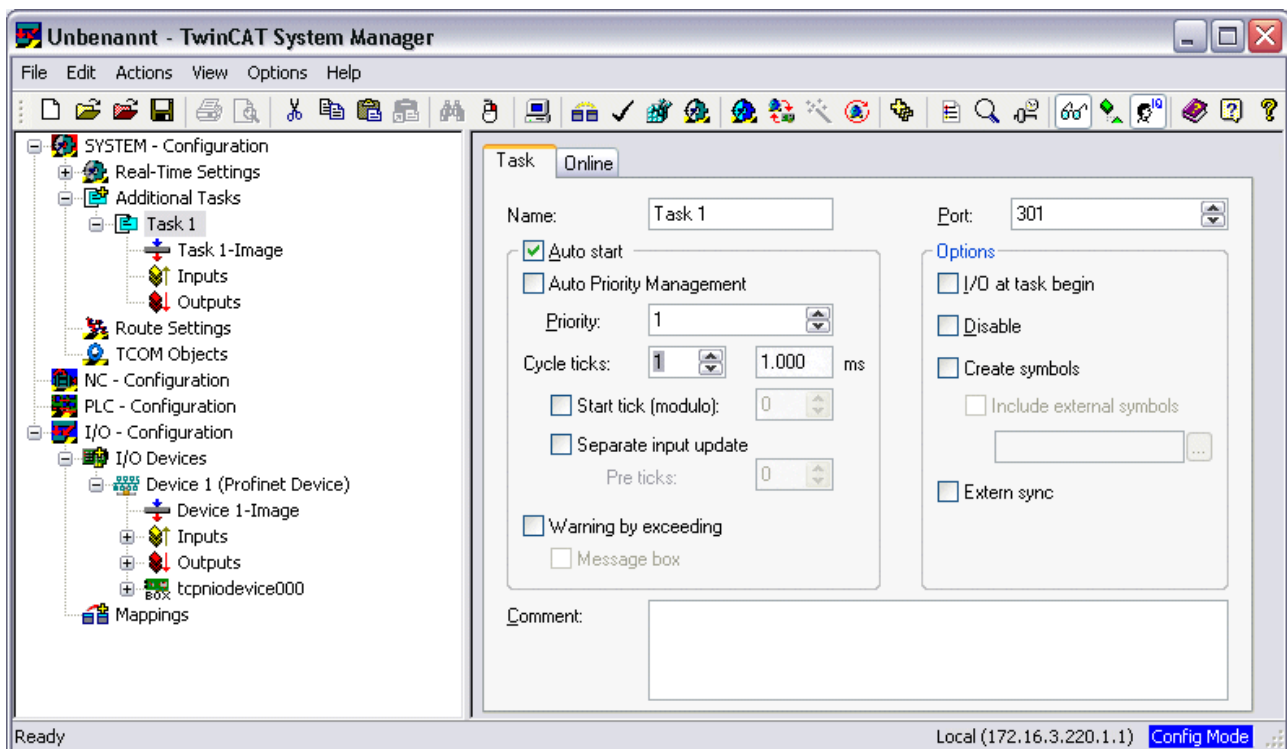


Fig. 32: Creating a task

In the case of less powerful devices (e.g. CX1000, CX9000 with E-bus), the CPU load may reach its limits. However, the performance can be improved again by means of the following considerations/asures:

- Is it possible to work with just one PLC task?
- Does the cycle time have to be 1 ms?
- If two tasks are used, can the PLC task time be shortened?
- Will several virtual PROFINET devices be required?

## 5.2 TwinCAT 2.11

### 5.2.1 Technical data - PROFINET RT

When using TwinCAT 2.11, all the target systems, for instance the CX Controllers, must have TwinCAT version 2.11 installed.

Technical data	Supplement
PROFINET Version	RT Class 1 ConformanceClassB
Number of device interfaces ) <sup>1</sup>	8
Topology	variable
Quantity of user data	per device, maximum one Ethernet frame length ) <sup>2</sup> 1500 bytes of user data, inc. IOPS and IOCS
Cycle time	≥ 1 ms

)<sup>1</sup> see the chapter on virtual PROFINET devices

)<sup>2</sup> Depending on the cycle time, the PROFINET cycle time, and the CPU being used

#### ● **Conditions required for operation**



The following points must be observed when using the PROFINET supplement:

- Only Ethernet cards with Intel chipset allowed.
- RealTime Ethernet driver must be installed.
- No other RealTime protocols must be connected through this interface.
- The real-time capability can only be guaranteed in the transmit direction; in the receive direction, the possibility of incorrect use means that it cannot be guaranteed. This might, for example, be the copying of large quantities of data through this interface.  
It is recommended that the PROFINET network is separated from other networks.

### 5.2.2 PROFINET device integration under TwinCAT 2.11

This description applies to the PROFINET DEVICE Supplement.

#### ● **Installation**



For a correct installation at least TwinCAT 2.11 build 1546 should be installed. With older TwinCAT versions we recommend an update. In other cases please contact [Beckhoff Support](#) [► 86].

#### 1. Integration of the PROFINET protocol

A PROFINET device must first be added.



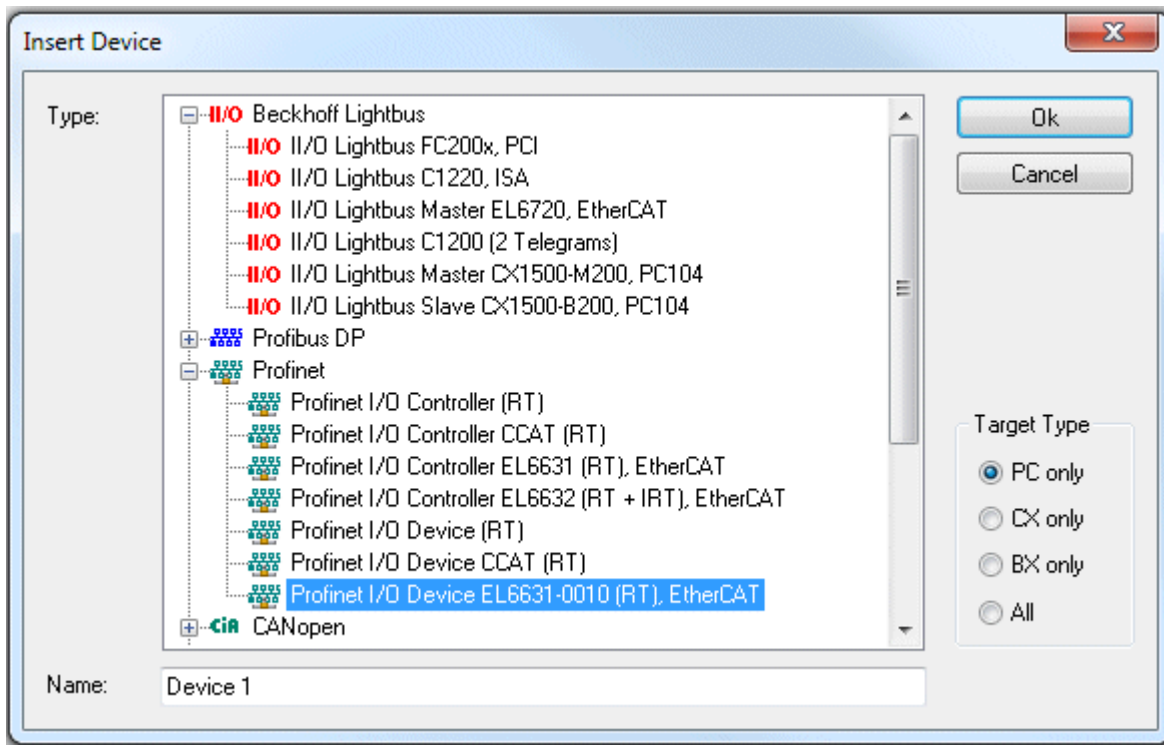


Fig. 33: "Insert Device" dialog

### ● Network card

**i** If no card is found, either the TwinCAT is not in Config mode, or the real-time Ethernet driver has not been installed properly.

This interface must be assigned to an adaptor class. This is composed of the MAC and IP address of the network card. Look for the corresponding network card by using "Search".

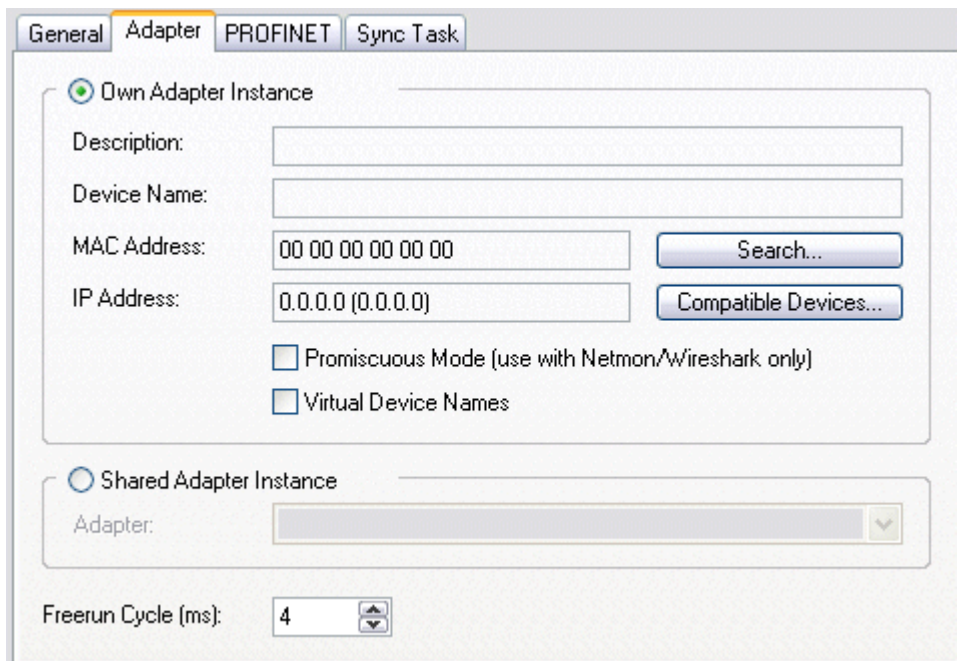


Fig. 34: Search button, network card selection

**MAC Address:**

MAC address of the Ethernet card (read-only)

*IP address:*

IP address of the card (read-only). The IP address is read from the operating system, and has nothing to do with the PROFINET IP address that will be used later.

**● IP address of the network card**

**i** Please note that the IP address of the PROFINET device and the IP address of the Ethernet card are not identical! The PROFINET driver works with a virtual IP address that must not be identical to the IP address of the operating system!

*Promiscuous Mode:*

This is required in order to record Ethernet frames, and should normally be switched off.

*Virtual Device Names:*

A virtual name is used for the network card.

*Shared Adapter Interface:*

Is included for compatibility reasons, but cannot be used with PROFINET.

*Free Cycle:*

Cycle time in Config mode (no real-time). If TwinCAT is operated in FREERUN mode, care must be taken that the freerun cycle set is no longer than the PROFINET cycle!

If, e.g., a CX9000 is to be parameterized, the target system must first be accessed remotely; the corresponding Ethernet port can subsequently be selected.

The NetID used can be found under the "Protocol" tab. It is, e.g., necessary for an ADS access. Besides that, there is a possibility in the "Sync Task" tab to append a free-running task for PROFINET communication (this is recommended). This allows the RealTime communication to run independently of a PLC task. For performance reasons, however (e.g. in the case of a CX9000), the Sync Tasks can be dispensed with and standard mapping takes place, i.e. a PLC task, for example, must be running in order for PROFINET communication to be possible.

A PROFINET protocol is then added by means of the right mouse button. Precisely one TwinCAT device protocol can be appended!

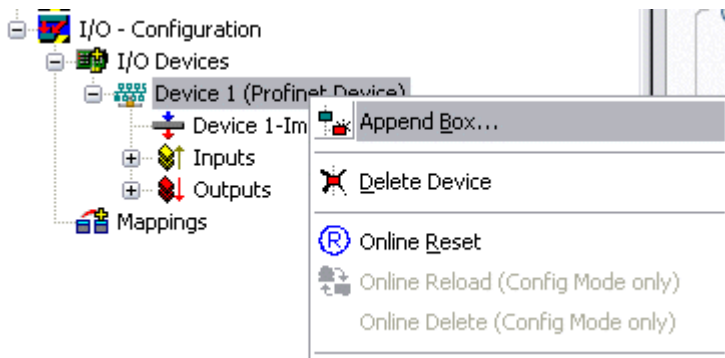


Fig. 35: Inserting a PROFINET protocol (TwinCAT device protocol)

A Box in the form of a GSDML is then integrated (right mouse button on "PROFINET Device").

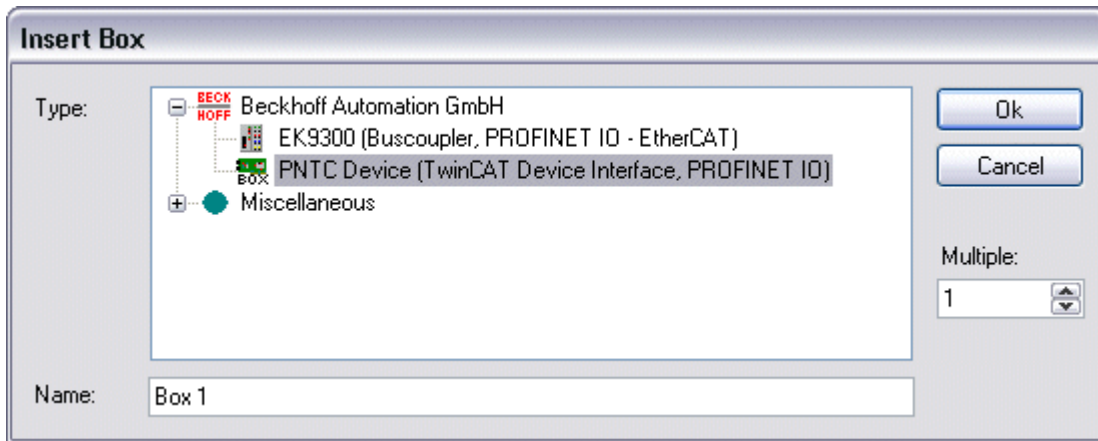


Fig. 36: "Insert Box" dialog

Integration with any Ethernet interface without port diagnosis according to Version 2.0 without LLDP.

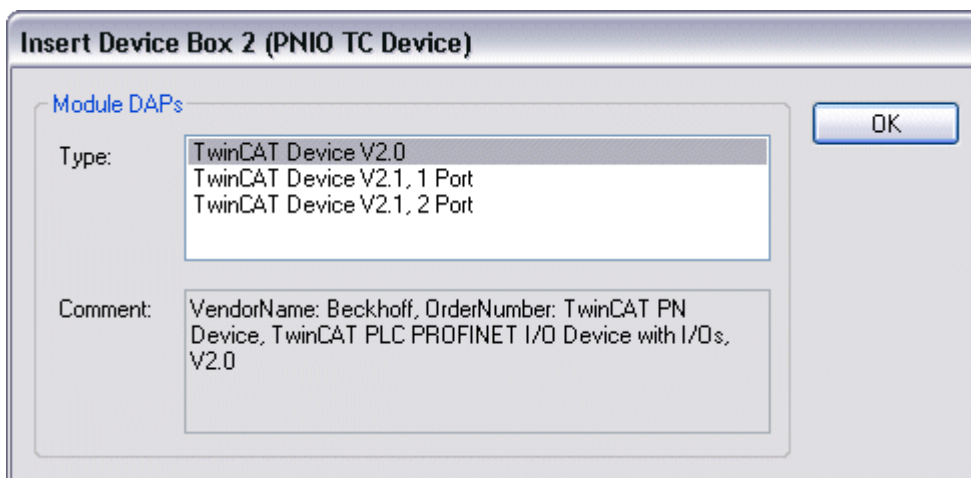


Fig. 37: Integrating any Ethernet interface without port diagnosis

Integration with a simple Ethernet interface (without switch, for example the CX1010 or FC90xx) with port diagnosis according to Version 2.1.

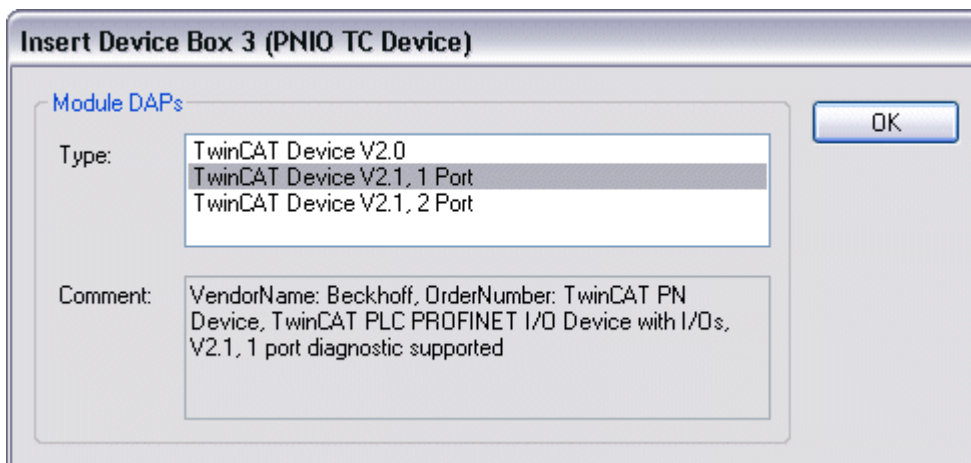


Fig. 38: Integrating a simple Ethernet interface with port diagnosis

Integration with a switched Ethernet interface (the CX1020, for example) with port diagnosis according to Version 2.1.

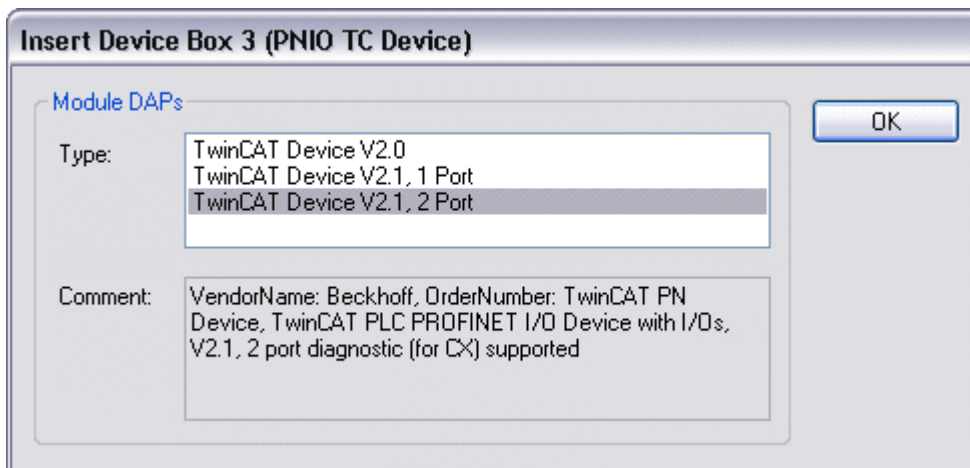


Fig. 39: Integration with a switched Ethernet interface with port diagnosis

### Virtual PROFINET device

It is also possible in TwinCAT to configure a number of virtual PROFINET devices (a maximum of 7 in the Supplement, and 1 in the EL6631-0010). Each device is again to be viewed as its own adaptor, i.e. each virtual device is assigned a default MAC address from a reserved range. To avoid possible address conflicts, the last byte of the MAC address of virtual devices can also be changed. The name which the device was given in the strand (or in the "General" tab) is also taken as a PROFINET station name following a restart. On the basis of different MAC addresses and names, a PROFINET controller can now distinguish several devices in the strand.

It is therefore possible to use 8 devices per Ethernet interface in the PROFINET Device Supplement, and to communicate with 8 different PROFINET controllers.

In PROFINET, different user profiles can be defined within a device (API - Application Process Instance). Precisely one API is permitted / supported for each device in TwinCAT.

In accordance with PROFINET, the DAP (Device Access Point) is always defined on slot 0. Device-specific data is defined in it. In accordance with PROFINET, several DAPs can be defined; however, in TwinCAT there is currently precisely one!

## 2. Process data

The process data can be inserted from slot 1. This takes place by integrating the desired module in the API. Each module (slot) has at present precisely one sub-module (sub-slot). The configuration of the modules and hence the creation of the process data image on the PROFINET side takes place by means of specifying data types / data widths (e.g. byte, word, dword, float 32).

The designation of the inputs and outputs always takes place in TwinCAT from the TwinCAT point of view, i.e. the inputs are from the PROFINET point of view (from the controller) the outputs! Therefore the data of the PROFINET I/O devices is represented as follows:

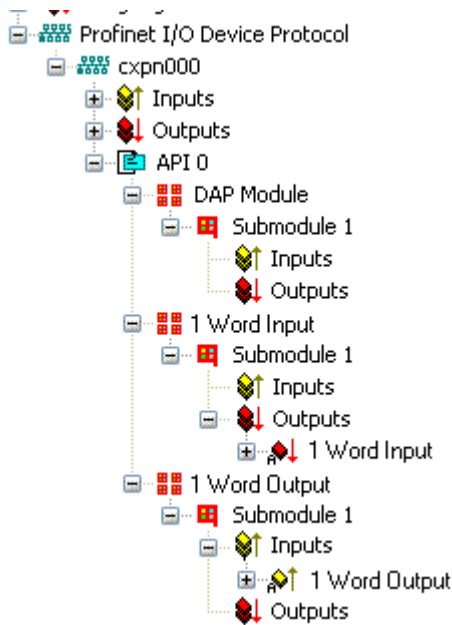


Fig. 40: Representation of the input/output data of the PROFINET I/O device

This representation applies only to the TwinCAT PROFINET device, in the case of a TwinCAT PROFINET controller, the view will correlate again!

**3. General settings**

The instance ID can be changed on the "PROFINET Devices" tab. However, the default settings suffice for normal operation!

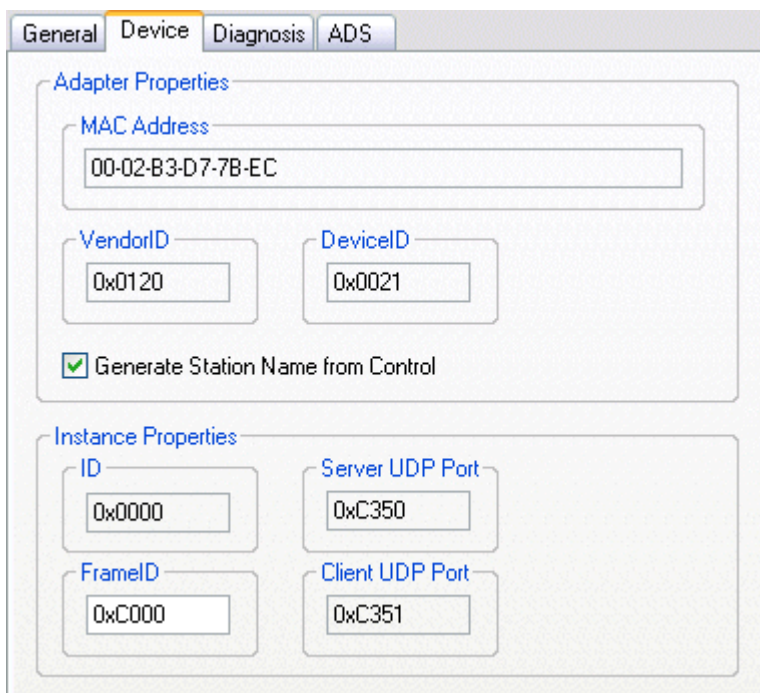


Fig. 41: "Device" tab

There is one further way of assigning the PROFINET station name. This is comparable with the DIP switches in the BK9103 and can be carried out via a PLC task. For activation, "Generate Station Name from Control" must be activated. For clarification, 000 will be appended to the previous tree name (default: "tcpnodevice").

**i** **Tree name**

This tree name no longer corresponds to the PROFINET station name! The Ctrl WORD of the PROFINET protocol is used to help assign a name. This means that the number that is entered (range of values 0 - 255) is appended to the existing station name. In addition, the Ctrl WORD must be linked to a task. It is subsequently necessary to restart TwinCAT. If, e.g., the task now specifies a value of 11 for the linked Ctrl WORD, its previous station name will change from, for example, "tcpniodevice" to "tcpniodevice011". The current tree name remains "tcpniodevice000".

The current station names and the IP configuration used can be checked via the "PROFINET diagnosis" tab.

**4. Cycle times**

The device can be operated in the minimum cycle time of 1 ms defined by PROFINET!

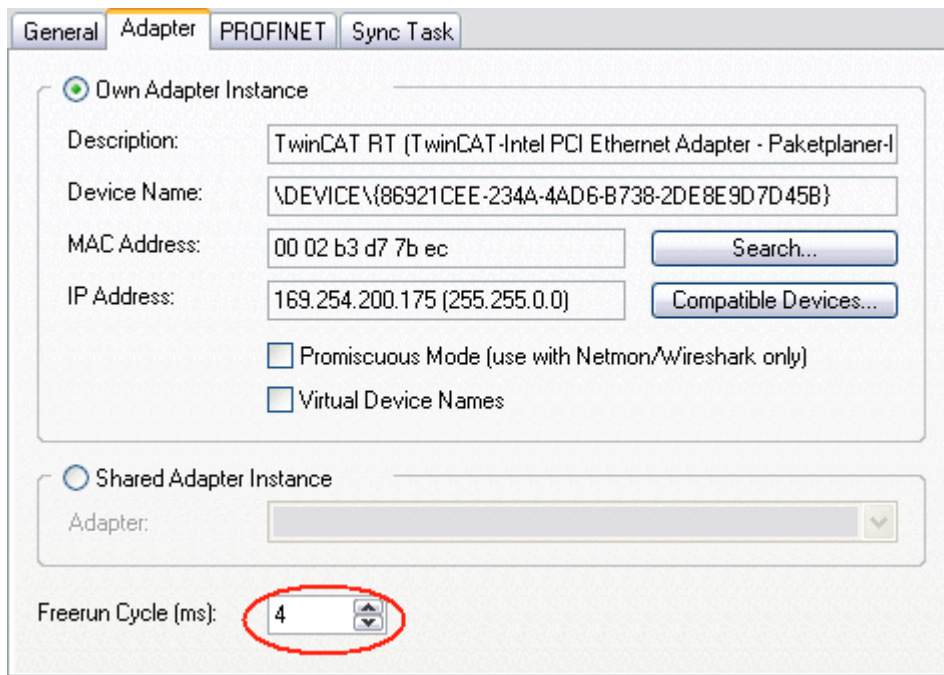


Fig. 42: "Adapter" tab, setting the cycle time

If TwinCAT is to be operated in RUN mode, a task must be created. In the simplest case, this is the aforementioned SyncTask. The call time for the task must not be longer than the PROFINET cycle time! If a second task is created, e.g. for the PLC, this can also run more slowly.

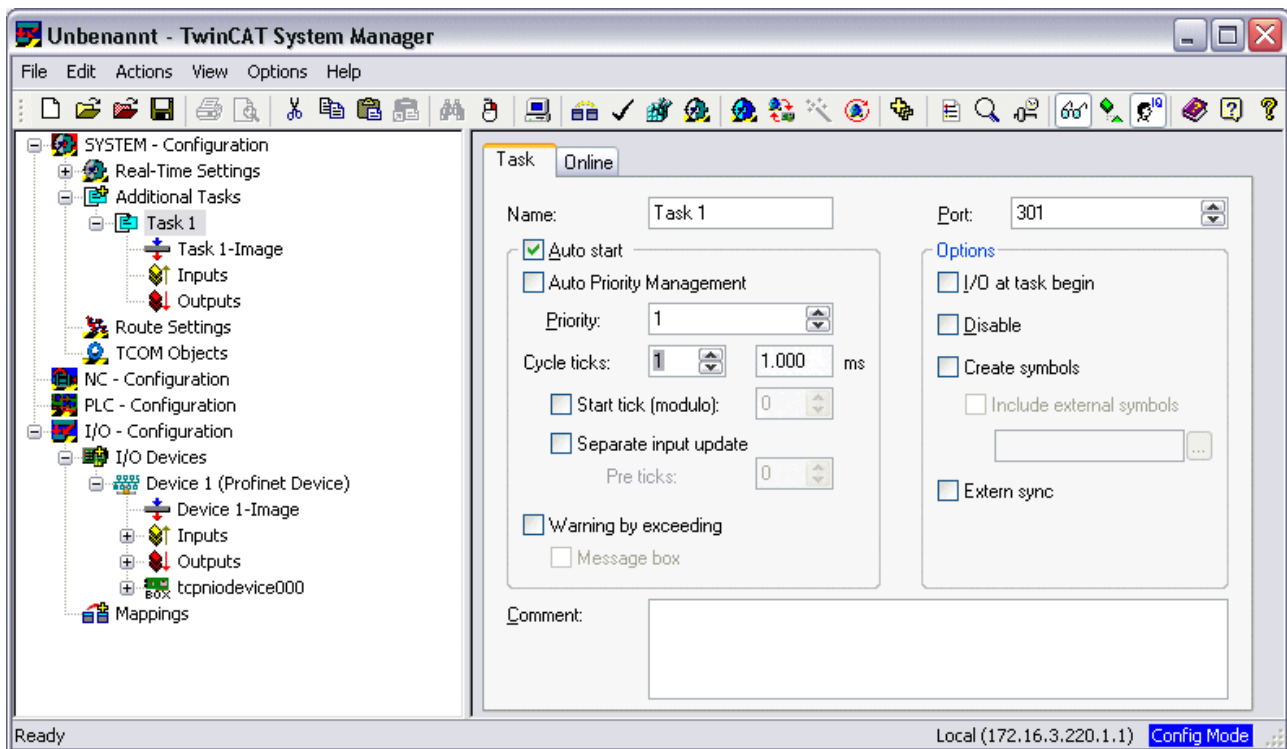


Fig. 43: Creating a task in the TwinCAT tree

In the case of less powerful devices (e.g. CX1000, CX9000 with E-bus), the CPU load may reach its limits. However, the performance can be improved again by means of the following considerations/measures:

- Is it possible to work with just one PLC task?
- Does the cycle time have to be 1 ms?
- If two tasks are used, can the PLC task time be shortened?
- Will several virtual PROFINET devices be required?



## 6 TwinCAT library and programming

### 6.1 Functions

#### 6.1.1 FUNCTION\_BLOCK FB\_Write\_IuM\_EL6631\_0010

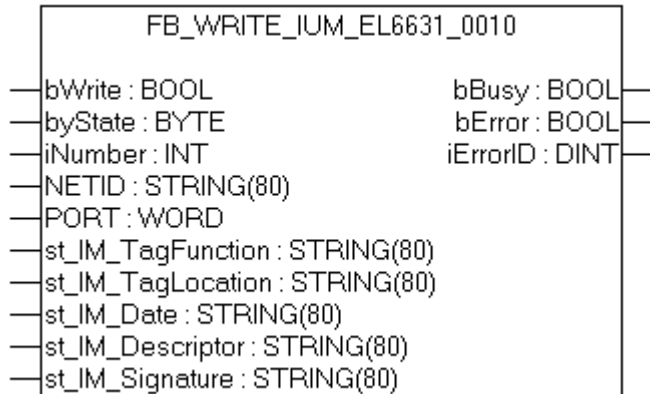


Fig. 44: FUNCTION\_BLOCK FB\_Write\_IuM\_EL6631\_0010

This function block writes I&M1, I&M2, I&M3 and I&M4 (Identification & Maintenance) data according to ProfiNET specification over EtherCAT as a string to the ProfiNET device.

#### VAR\_INPUT

```

VAR_INPUT
  bWrite          : BOOL;
  NETID           : STRING; (* AMS NET ID EtherCAT Master *)
  PORT           : WORD;   (* EtherCAT Slave address *)
  byState        : BYTE;   (* Bit 0 -> I&M1 || Bit 1 -> I&M2 || Bit 2 -> I&M3 || Bit 3 -
> I&M4*)
  iNumber        : INT:=0; (* "0"=EL6631-0010 or "1"=vital EL6631-0010*)
  st_IM_TagFunction : STRING; (* I&M1 byState.0=TRUE*)
  st_IM_TagLocation : STRING; (* I&M1 byState.0=TRUE*)
  st_IM_Date      : STRING; (* I&M2 byState.1=TRUE*)
  st_IM_Descriptor : STRING; (* I&M3 byState.2=TRUE*)
  st_IM_Signature : STRING; (* I&M4 byState.3=TRUE*)END_VAR
    
```

**bWrite:** A rising edge on this input activates the function block and the I&M data is written to the ProfiNET device.

**NETID:** AMS Net ID of the controller

**PORT:** Port via which the controller communicates with the device (port = Device ID + 1000<sub>hex</sub>)

**byState:** This byte can be used to select which I&M data is to be written.

**iNumber:** Two ProfiNET devices can be mapped with one terminal. *iNumber* ("0" or "1") is used to select the device for which the I&M data is to be written.

**st\_IM\_TagFunction:** Label for the function of the device is written to the device.

**st\_IM\_Taglocation:** Label for the installation site of the device is written to the device.

**st\_IM\_Date:** Date of the installation of the device is written to the device.

**st\_IM\_Descriptor:** Description of the manufacturer is written to the device.

**st\_IM\_Signature:** Description of the manufacturer is written to the device.



**VAR\_OUTPUT**

```

VAR_OUTPUT
  bBusy      : BOOL;
  bError     : BOOL;
  iErrorID   : DINT;
END_VAR

```

**bBusy:** When the function block is activated this output is set. It remains set until a feedback is received. While Busy = TRUE, no new command will be accepted at the inputs.

**bError:** In the event of an error during the command transfer, this output is set once the *bBusy* output has been reset.

**iErrorID:** Supplies an ADS error number when the output *bError* is set.

Development environment	Target platform	PLC libraries to be linked
TwinCAT v2.11.0 R3	PC or CX (x86, ARM)	TcProfinetDiag.Lib

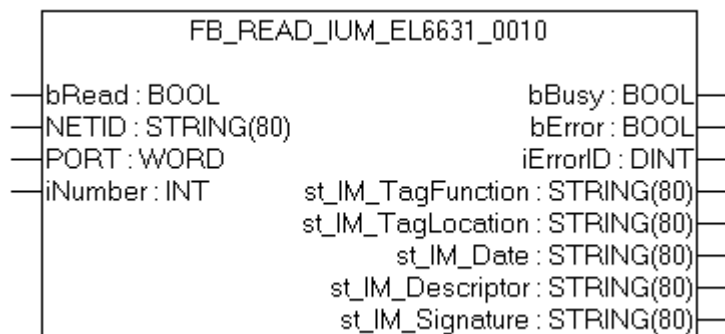
**6.1.2 FUNCTION\_BLOCK FB\_Read\_IuM\_EL6631\_0010**

Fig. 45: FUNCTION\_BLOCK FB\_Read\_IuM\_EL6631\_0010

This function block reads I&M1, I&M2, I&M3 and I&M4 (Identification & Maintenance) data over EtherCAT as a string from a ProfinET device. The reading of the I&M0 data takes place in the case of a ProfinET device with EtherCAT via CoE (CAN over EtherCAT).

**VAR\_INPUT**

```

VAR_INPUT
  bRead      : BOOL;
  NETID     : STRING; (* AMS NET ID EtherCAT Master *)
  PORT      : WORD;   (* EtherCAT Slave address *)
  iNumber    : INT;   (* "0"=EL6631-0010 or "1"=vital EL6631-0010*)
END_VAR

```

**bRead:** A rising edge on this input activates the function block and the I&M data is read from the ProfinET device.

**NETID:** AMS Net ID of the controller

**PORT:** Port via which the controller communicates with the device (port = Device ID + 1000<sub>hex</sub>)

**iNumber:** Two ProfinET devices can be mapped with one terminal. *iNumber* ("0" or "1") is used to select the device for which the I&M data is to be read out.

**VAR\_OUTPUT**

```

VAR_OUTPUT
  bBusy      : BOOL;
  bError     : BOOL;
  iErrorID   : DINT;
  st_IM_TagFunction : STRING; (* I&M1 *)
  st_IM_TagLocation : STRING; (* I&M1 *)
  st_IM_Date    : STRING; (* I&M2 *)

```

```

    st_IM_Descriptor   : STRING; (* I&M3 *)
    st_IM_Signature   : STRING; (* I&M4 *)
END_VAR

```

**bBusy:** When the function block is activated this output is set. It remains set until a feedback is received. While Busy = TRUE, no new command will be accepted at the inputs.

**bError:** In the event of an error during the command transfer, this output is set once the *bBusy* output has been reset.

**iErrorID:** Supplies an ADS error number when the output *bError* is set.

**st\_IM\_TagFunction:** label read out for the function of the device.

**st\_IM\_Taglocation:** label read out for the installation site of the device.

**st\_IM\_Date:** Supplies the date of installation of the device in the format.

**st\_IM\_Descriptor:** Returns the manufacturer description stored for the device.

**st\_IM\_Signature:** Returns the manufacturer signature stored for the device.

Development environment	Target platform	PLC libraries to be linked
TwinCAT v2.11.0 R3	PC or CX (x86, ARM)	TcProfinetDiag.Lib

## 7 Appendix

### 7.1 FAQ

The following information answers frequently asked questions and gives hints for the configuration of the PROFINET system. If these are not observed, undesired behavior may occur. Here you will find approaches to diagnostics.

#### 7.1.1 Device description file (GSDML) / DAP (DeviceAccessPoint)

##### Device description file (GSDML) / DAP (DeviceAccessPoint)

- Is the GSDML available on the system?
- Do the versions of both systems match?
  - It is recommended to use the same GSDML/DAP versions on both systems.
  - Is the latest version used?
- Is the GSDML in the correct path?
  - TwinCAT 2: TwinCAT2: C:\TwinCAT\lo\ProfiNet
  - TwinCAT 3: C:\TwinCAT\3.1\Config\lo\Profinet
- Is the correct GSDML used?
  - Version
  - It may be necessary to contact the vendor/manufacturer or search for the appropriate GSDML on the vendor's website.
- Where can I find GSDML files?
  - From Beckhoff products the GSDML files are usually delivered with the installation of TwinCAT.
  - On the [Beckhoff website](#), use the "Download Finder" and its filter options for this purpose

The screenshot shows the Beckhoff website's 'Download finder' page. The page has a red header with the Beckhoff logo and navigation links. The main content area is titled 'Download finder' and includes a search bar and a list of download categories: 'Application notes', 'Data sheets', 'Information media', and 'Configuration files'. Each category has a representative image and a 'Learn more' link.

Fig. 46: Website Download finder

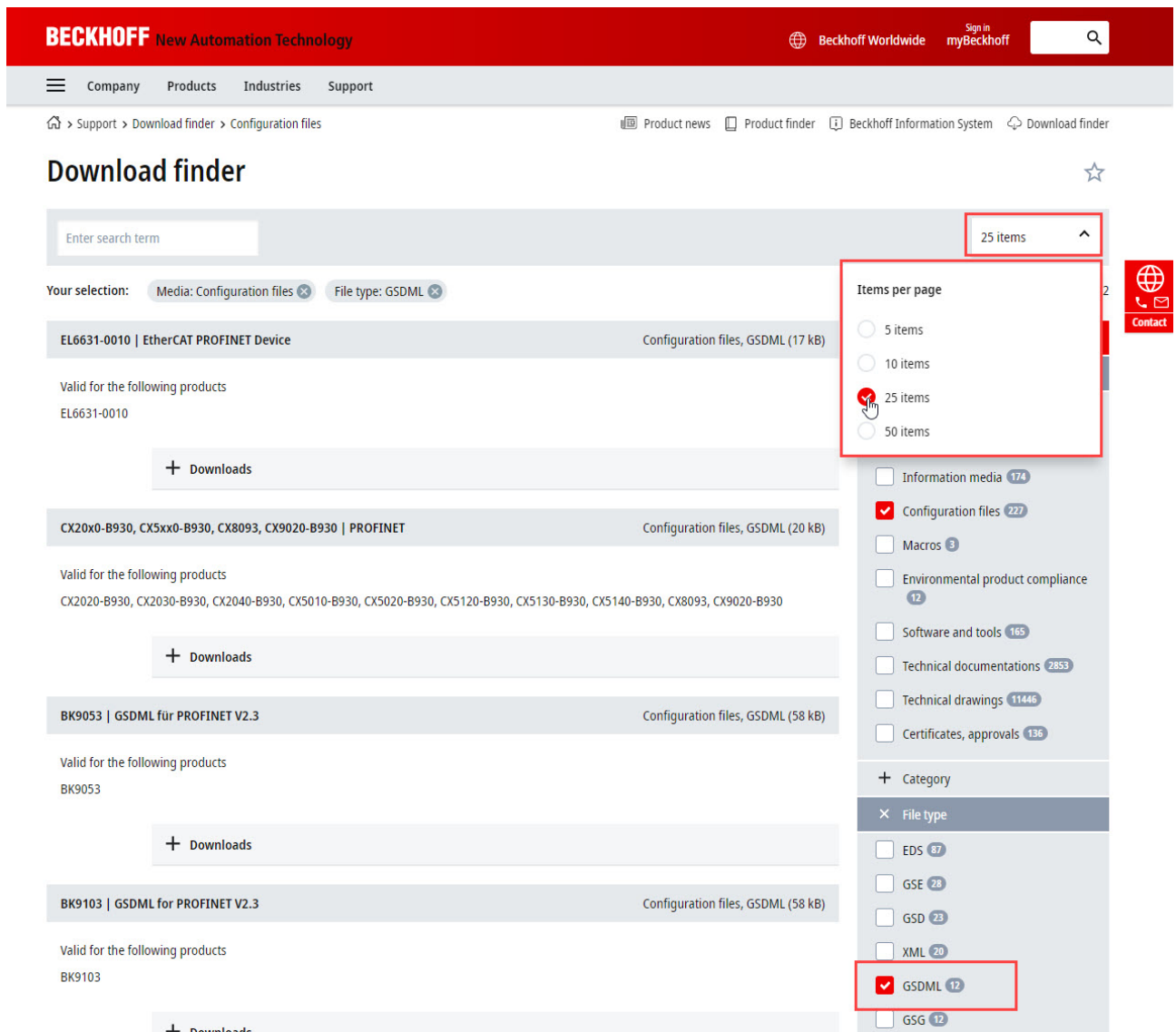


Fig. 47: Website Download finder (filtered)

- For products from other suppliers/manufacturers, the supplier must be contacted or the GSDML files can be downloaded from the website.

## 7.1.2 Task configuration

### Task configuration

- Has a free-running task been created?
  - Or a "special sync task" used?
- Cycle time to base 2?
  - 1ms, 2ms, 4ms, 8ms, ....

The screenshot shows a software configuration window with several tabs: General, Adapter, PROFINET, Sync Task, Diag History, and Diagnosis. The 'Sync Task' tab is active. Under the 'Settings' section, the 'Special Sync Task' radio button is selected. Below it, a dropdown menu shows 'Task\_PROFINET' and a 'Create new I/O Task' button. The 'Sync Task' section contains the following fields: 'Name' is 'Task\_PROFINET'; 'Cycle ticks' is '1' with a multiplier of '1.000 ms'; there is an unchecked checkbox for 'Adjustable by Protocol'; and 'Priority' is '1'.

Fig. 48: Setting "Special Sync Task"

- Further notes in chapter [Sync Task](#)

### 7.1.3 EL663x-00x0 EtherCAT Terminals

#### EL663x-00x0 EtherCAT Terminals

- Was the correct terminal used?
  - EL663x-0000 cannot be used as device
  - EL6631-0010 cannot be used as controller

#### EL663x-00x0 EtherCAT Terminals

- Was the correct terminal used?
  - EL663x-0000 cannot be used as device
  - EL6631-0010 cannot be used as controller

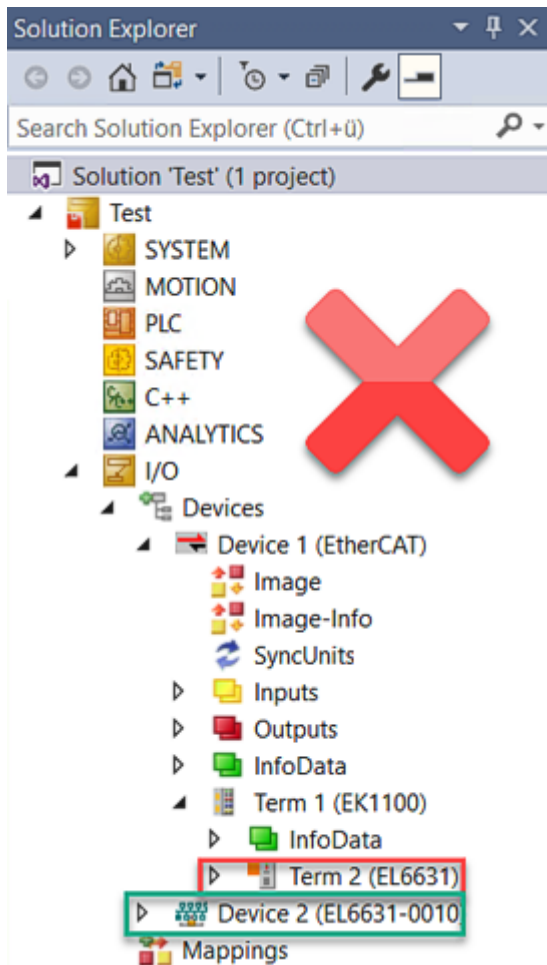


Fig. 49: Wrong configuration

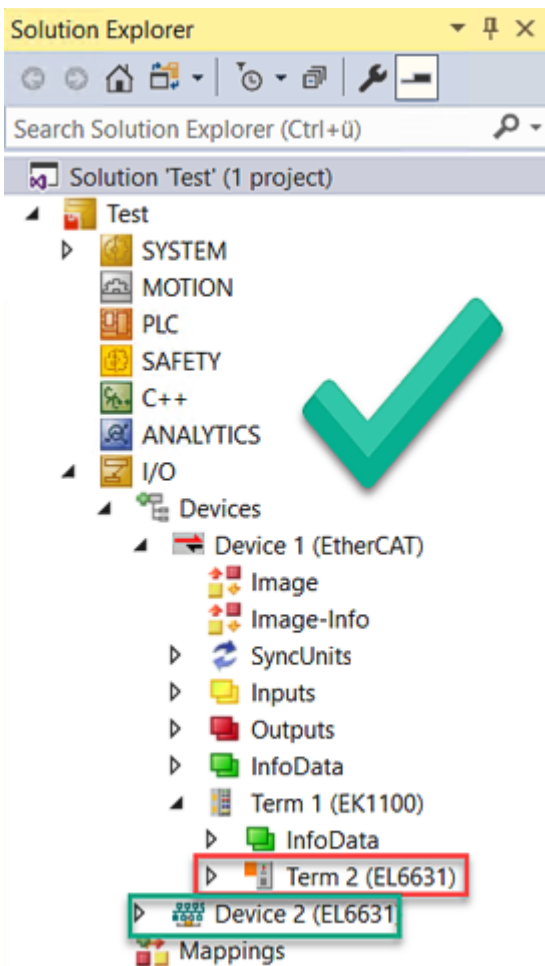


Fig. 50: Correct configuration

- EtherCAT diagnostics
  - EtherCAT state = Operational (OP)
  - WcState = 0 (Data valid)
- EtherCAT diagnostics
  - EtherCAT state = Operational (OP)
  - WcState = 0 (Data valid)

## 7.1.4 BoxStates of the PROFINET devices

### BoxStates of the PROFINET devices

- Communication established?
  - See [Box States](#)



## 7.1.5 Diagnostic status under TIA

- I get a message that the installed firmware is not identical to the version of the configured firmware, what should I do?
  - If this message appears under the TIA software (see illustration), it can be ignored. The products are always downward compatible, i.e. the old GSDML file can still be used with newer software without having to update it. There is no technical reason to take action here.

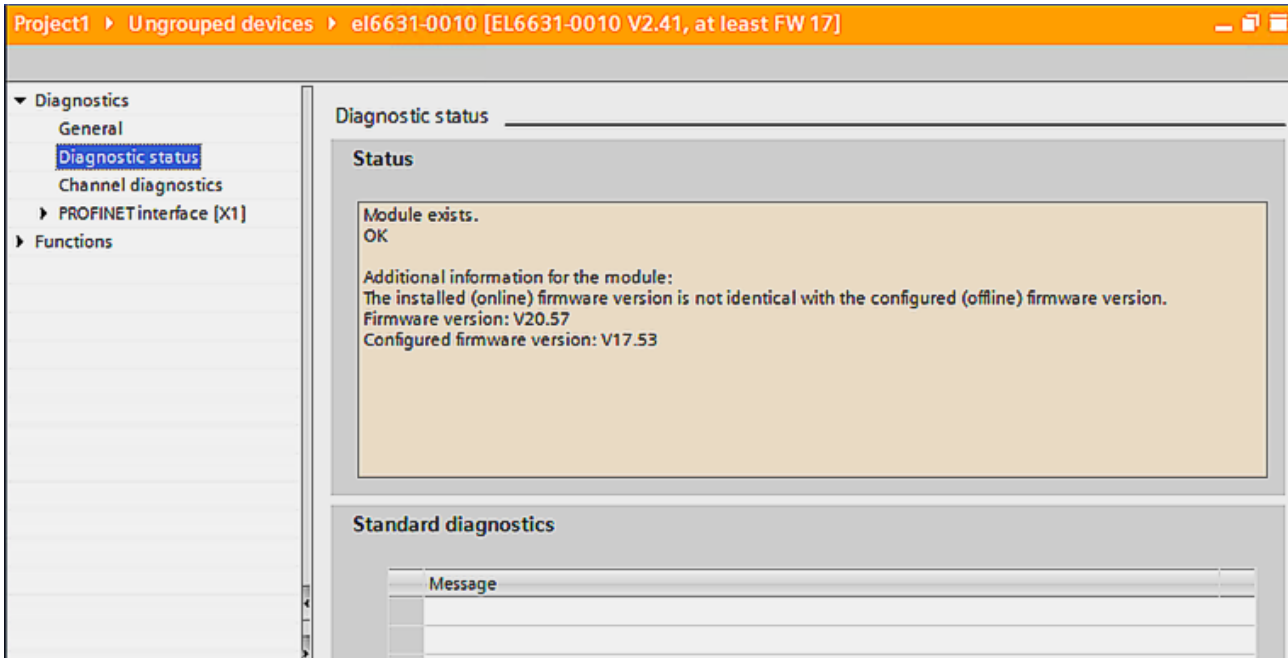


Fig. 51: Note on the firmware in Diagnostic Status

## 7.2 EtherCAT AL Status Codes

For detailed information please refer to the [EtherCAT system description](#).

## 7.3 Firmware compatibility

Beckhoff EtherCAT devices are delivered with the latest available firmware version. Compatibility of firmware and hardware is mandatory; not every combination ensures compatibility. The overview below shows the hardware versions on which a firmware can be operated.

### Note

- It is recommended to use the newest possible firmware for the respective hardware
- Beckhoff is not under any obligation to provide customers with free firmware updates for delivered products.

### NOTICE

#### Risk of damage to the device!

Pay attention to the instructions for firmware updates on the [separate page \[▶ 73\]](#).

If a device is placed in BOOTSTRAP mode for a firmware update, it does not check when downloading whether the new firmware is suitable.

This can result in damage to the device! Therefore, always make sure that the firmware is suitable for the hardware version!

EL6631-0010			
Hardware (HW)	Firmware	Revision no.	Release date
03 - 07	01	EL6631-0010-0016	2011/05
	02	EL6631-0010-0017	2012/12
08-14	02	EL6631-0010-0018	2013/05
	03		2014/05
	04		2014/10
	05		2014/12
	06		2015/05
	07		2015/10
02 – 18*	08		2016/11
	09		2017/01
	10		2017/06
	11		2017/11
	12		2018/04
	13		2018/07
	14		2018/12
	15		2020/01
	16		2020/06
	17		2022/02
	18		2023/05
	19*		2023/09

\*) This is the current compatible firmware/hardware version at the time of the preparing this documentation. Check on the Beckhoff web page whether more up-to-date [documentation](#) is available.

## 7.4 Firmware Update EL/ES/EM/ELM/EP/EPP/ERPxxxx

This section describes the device update for Beckhoff EtherCAT slaves from the EL/ES, ELM, EM, EK, EP, EPP and ERP series. A firmware update should only be carried out after consultation with Beckhoff support.

### NOTICE

#### Only use TwinCAT 3 software!

A firmware update of Beckhoff IO devices must only be performed with a TwinCAT 3 installation. It is recommended to build as up-to-date as possible, available for free download on the [Beckhoff website](#).

To update the firmware, TwinCAT can be operated in the so-called FreeRun mode, a paid license is not required.

The device to be updated can usually remain in the installation location, but TwinCAT has to be operated in the FreeRun. Please make sure that EtherCAT communication is trouble-free (no LostFrames etc.).

Other EtherCAT master software, such as the EtherCAT Configurator, should not be used, as they may not support the complexities of updating firmware, EEPROM and other device components.

### Storage locations

An EtherCAT slave stores operating data in up to three locations:

- Each EtherCAT slave has a device description, consisting of identity (name, product code), timing specifications, communication settings, etc.  
This device description (ESI; EtherCAT Slave Information) can be downloaded from the Beckhoff website in the download area as a [zip file](#) and used in EtherCAT masters for offline configuration, e.g. in TwinCAT.  
Above all, each EtherCAT slave carries its device description (ESI) electronically readable in a local memory chip, the so-called **ESI EEPROM**. When the slave is switched on, this description is loaded locally in the slave and informs it of its communication configuration; on the other hand, the EtherCAT master can identify the slave in this way and, among other things, set up the EtherCAT communication accordingly.

### NOTICE

#### Application-specific writing of the ESI-EEPROM

The ESI is developed by the device manufacturer according to ETG standard and released for the corresponding product.

- Meaning for the ESI file: Modification on the application side (i.e. by the user) is not permitted.
- Meaning for the ESI EEPROM: Even if a writeability is technically given, the ESI parts in the EEPROM and possibly still existing free memory areas must not be changed beyond the normal update process. Especially for cyclic memory processes (operating hours counter etc.), dedicated memory products such as EL6080 or IPC's own NOVDRAM must be used.

- Depending on functionality and performance EtherCAT slaves have one or several local controllers for processing I/O data. The corresponding program is the so-called **firmware** in \*.efw format.
- In some EtherCAT slaves the EtherCAT communication may also be integrated in these controllers. In this case the controller is usually a so-called **FPGA** chip with \*.rbf firmware.

Customers can access the data via the EtherCAT fieldbus and its communication mechanisms. Acyclic mailbox communication or register access to the ESC is used for updating or reading of these data.

The TwinCAT System Manager offers mechanisms for programming all three parts with new data, if the slave is set up for this purpose. Generally the slave does not check whether the new data are suitable, i.e. it may no longer be able to operate if the data are unsuitable.

### Simplified update by bundle firmware

The update using so-called **bundle firmware** is more convenient: in this case the controller firmware and the ESI description are combined in a \*.efw file; during the update both the firmware and the ESI are changed in the terminal. For this to happen it is necessary

- for the firmware to be in a packed format: recognizable by the file name, which also contains the revision number, e.g. ELxxxx-xxxx\_REV0016\_SW01.efw

- for password=1 to be entered in the download dialog. If password=0 (default setting) only the firmware update is carried out, without an ESI update.
- for the device to support this function. The function usually cannot be retrofitted; it is a component of many new developments from year of manufacture 2016.

Following the update, its success should be verified

- ESI/Revision: e.g. by means of an online scan in TwinCAT ConfigMode/FreeRun – this is a convenient way to determine the revision
- Firmware: e.g. by looking in the online CoE of the device

### NOTICE

#### Risk of damage to the device!

- ✓ Note the following when downloading new device files
  - a) Firmware downloads to an EtherCAT device must not be interrupted
  - b) Flawless EtherCAT communication must be ensured. CRC errors or LostFrames must be avoided.
  - c) The power supply must adequately dimensioned. The signal level must meet the specification.
- ⇒ In the event of malfunctions during the update process the EtherCAT device may become unusable and require re-commissioning by the manufacturer.

## 7.4.1 Device description ESI file/XML

### NOTICE

#### Attention regarding update of the ESI description/EEPROM

Some slaves have stored calibration and configuration data from the production in the EEPROM. These are irretrievably overwritten during an update.

The ESI device description is stored locally on the slave and loaded on start-up. Each device description has a unique identifier consisting of slave name (9 characters/digits) and a revision number (4 digits). Each slave configured in the System Manager shows its identifier in the EtherCAT tab:

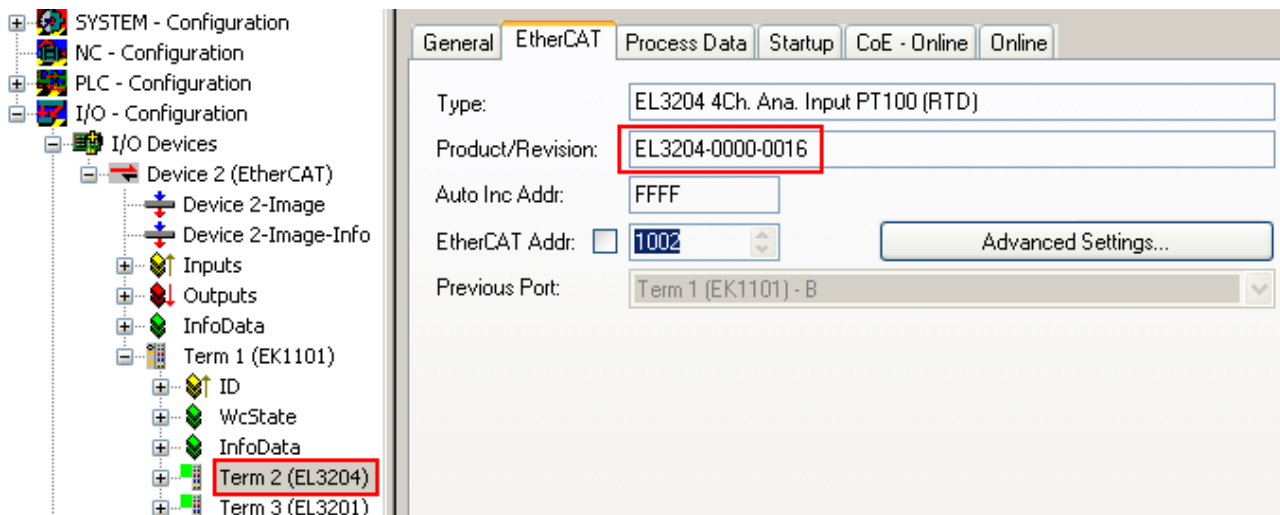


Fig. 52: Device identifier consisting of name EL3204-0000 and revision -0016

The configured identifier must be compatible with the actual device description used as hardware, i.e. the description which the slave has loaded on start-up (in this case EL3204). Normally the configured revision must be the same or lower than that actually present in the terminal network.

For further information on this, please refer to the [EtherCAT system documentation](#).

**i Update of XML/ESI description**

The device revision is closely linked to the firmware and hardware used. Incompatible combinations lead to malfunctions or even final shutdown of the device. Corresponding updates should only be carried out in consultation with Beckhoff support.

**Display of ESI slave identifier**

The simplest way to ascertain compliance of configured and actual device description is to scan the EtherCAT boxes in TwinCAT mode Config/FreeRun:

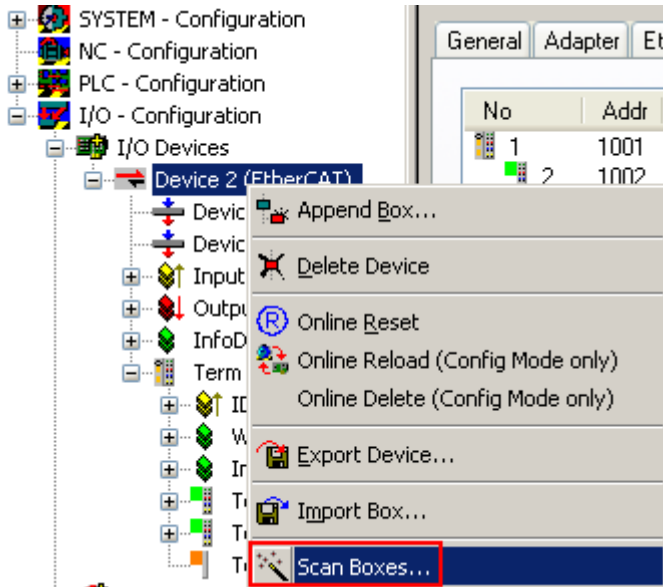


Fig. 53: Scan the subordinate field by right-clicking on the EtherCAT device

If the found field matches the configured field, the display shows



Fig. 54: Configuration is identical

otherwise a change dialog appears for entering the actual data in the configuration.

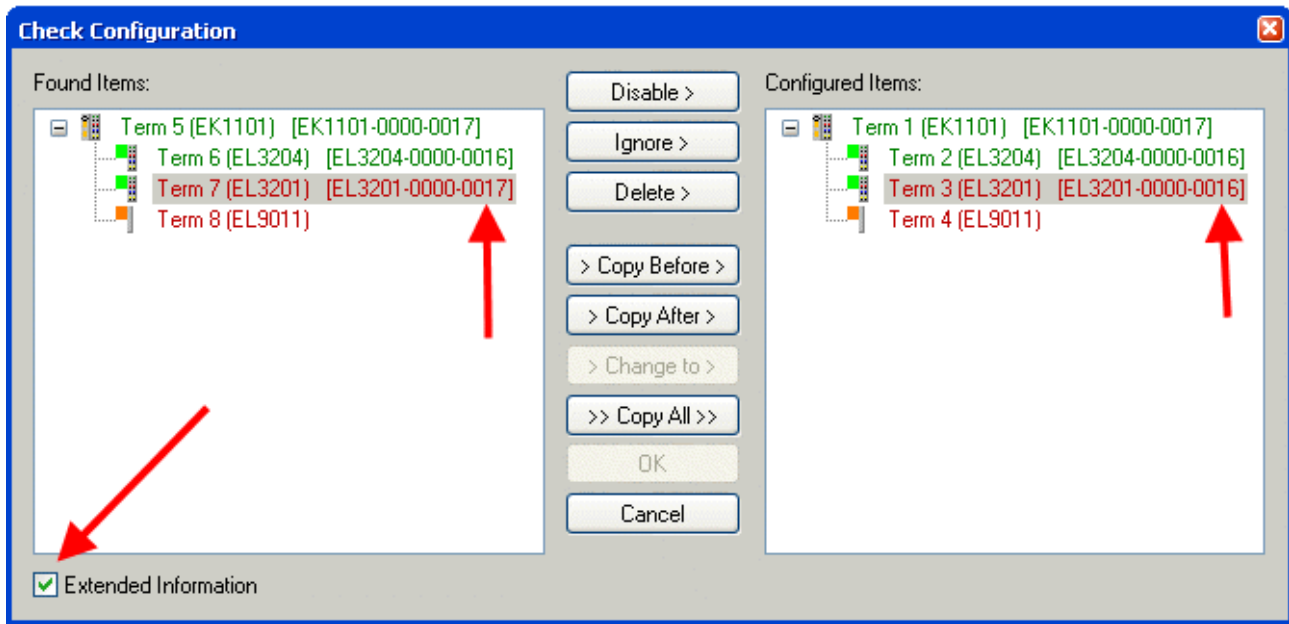


Fig. 55: Change dialog

In this example in Fig. *Change dialog*, an EL3201-0000-0017 was found, while an EL3201-0000-0016 was configured. In this case the configuration can be adapted with the *Copy Before* button. The *Extended Information* checkbox must be set in order to display the revision.

### Changing the ESI slave identifier

The ESI/EEPROM identifier can be updated as follows under TwinCAT:

- Trouble-free EtherCAT communication must be established with the slave.
- The state of the slave is irrelevant.
- Right-clicking on the slave in the online display opens the *EEPROM Update* dialog, Fig. *EEPROM Update*

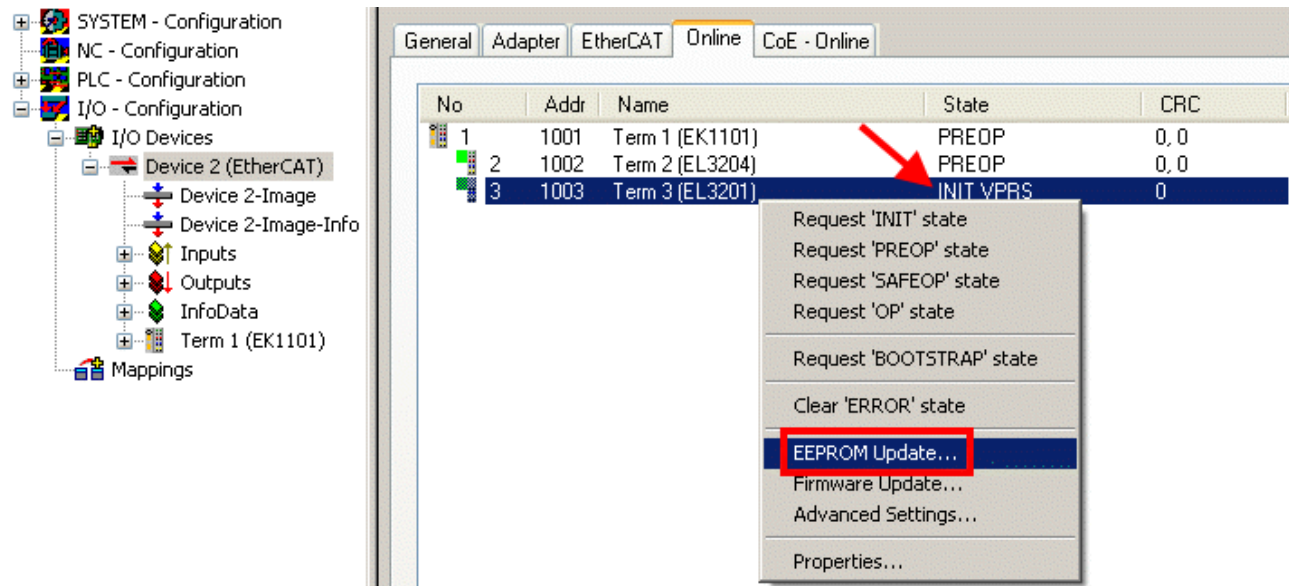


Fig. 56: EEPROM Update

The new ESI description is selected in the following dialog, see Fig. *Selecting the new ESI*. The checkbox *Show Hidden Devices* also displays older, normally hidden versions of a slave.

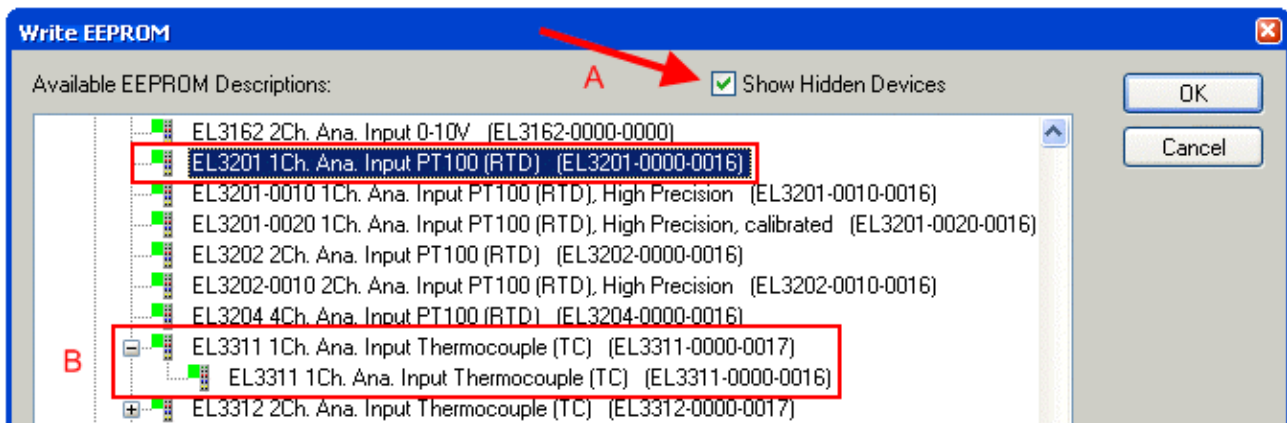


Fig. 57: Selecting the new ESI

A progress bar in the System Manager shows the progress. Data are first written, then verified.

**i** **The change only takes effect after a restart.**

Most EtherCAT devices read a modified ESI description immediately or after startup from the INIT. Some communication settings such as distributed clocks are only read during power-on. The EtherCAT slave therefore has to be switched off briefly in order for the change to take effect.

## 7.4.2 Firmware explanation

### Determining the firmware version

#### Determining the version via the TwinCAT System Manager

The TwinCAT System Manager shows the version of the controller firmware if the master can access the slave online. Click on the E-Bus Terminal whose controller firmware you want to check (in the example terminal 2 (EL3204)) and select the tab *CoE Online* (CAN over EtherCAT).

**i** **CoE Online and Offline CoE**

Two CoE directories are available:

- **online:** This is offered in the EtherCAT slave by the controller, if the EtherCAT slave supports this. This CoE directory can only be displayed if a slave is connected and operational.
- **offline:** The EtherCAT Slave Information ESI/XML may contain the default content of the CoE. This CoE directory can only be displayed if it is included in the ESI (e.g. "Beckhoff EL5xxx.xml").

The Advanced button must be used for switching between the two views.

In Fig. *Display of EL3204 firmware version* the firmware version of the selected EL3204 is shown as 03 in CoE entry 0x100A.



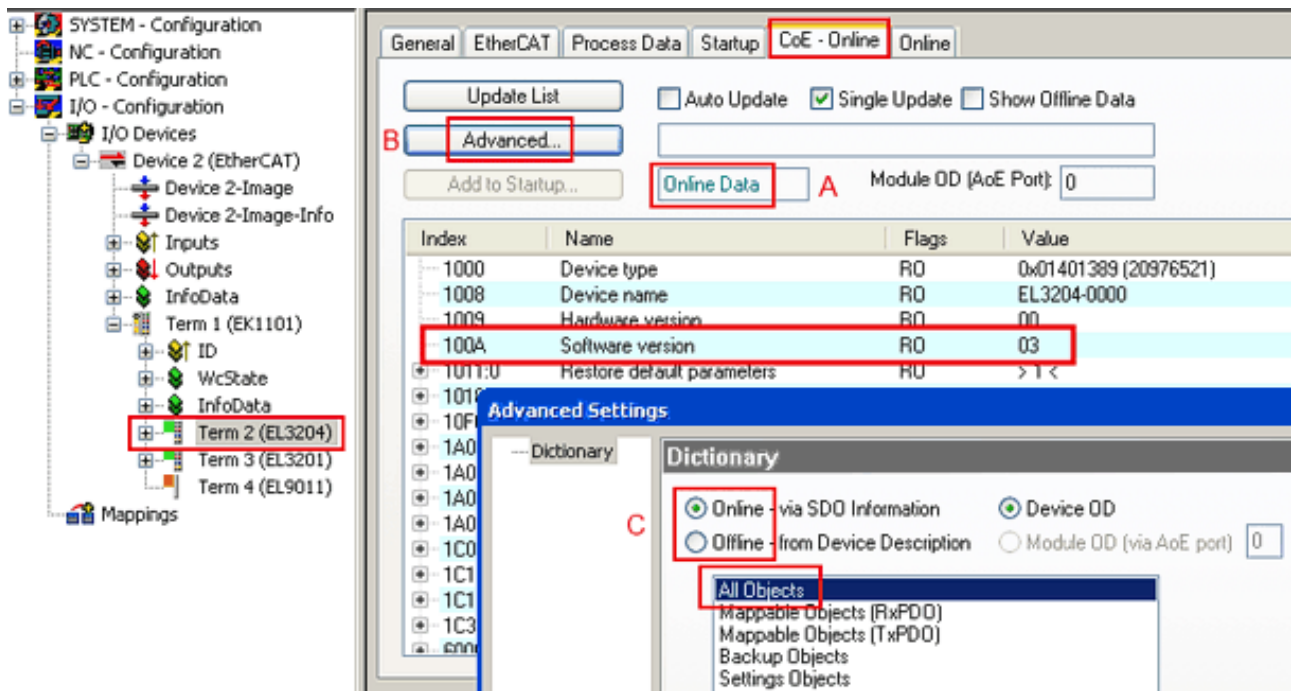


Fig. 58: Display of EL3204 firmware version

In (A) TwinCAT 2.11 shows that the Online CoE directory is currently displayed. If this is not the case, the Online directory can be loaded via the *Online* option in Advanced Settings (B) and double-clicking on *AllObjects*.

### 7.4.3 Updating controller firmware \*.efw

#### ● CoE directory

**i** The Online CoE directory is managed by the controller and stored in a dedicated EEPROM, which is generally not changed during a firmware update.

Switch to the *Online* tab to update the controller firmware of a slave, see Fig. *Firmware Update*.

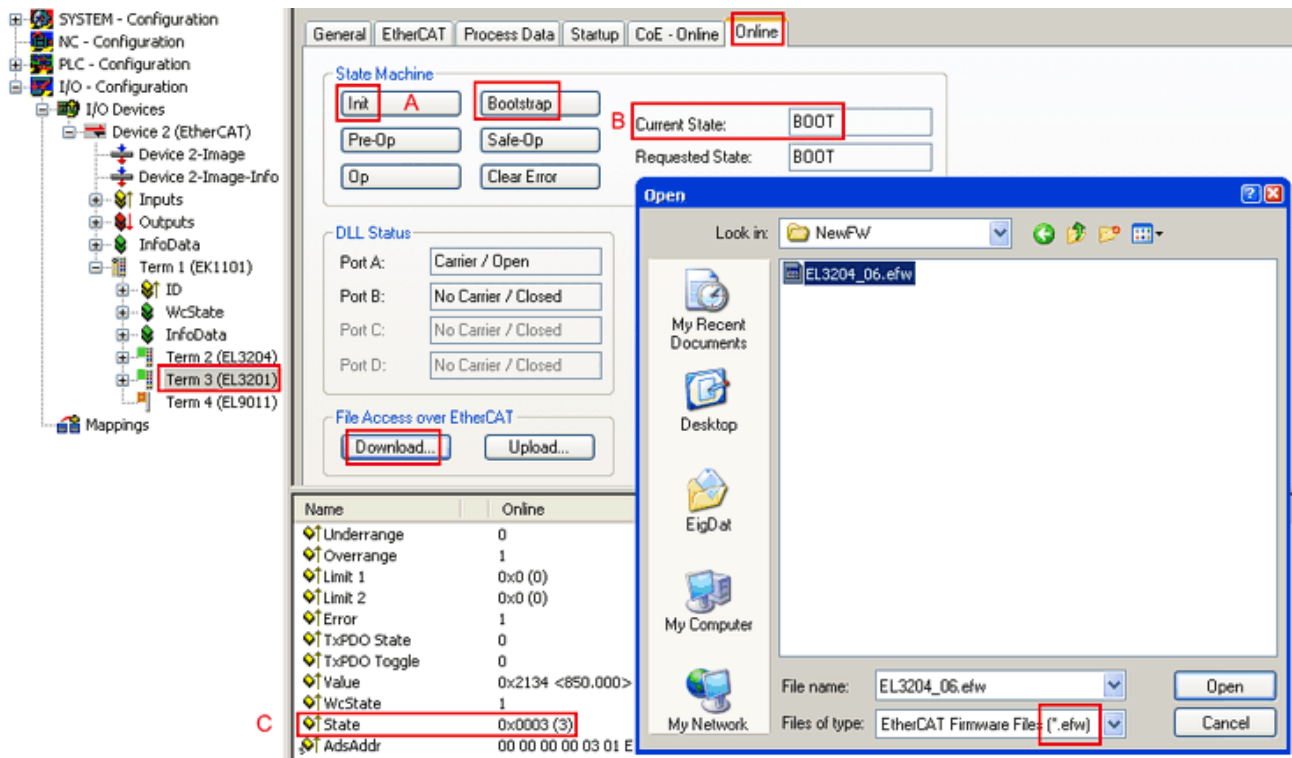
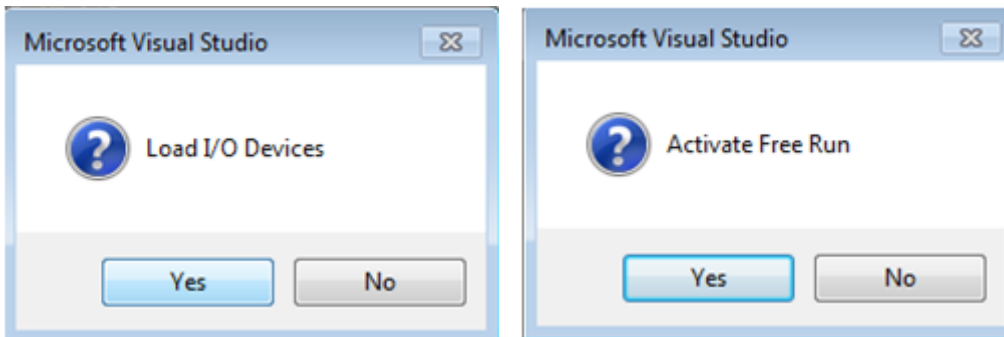


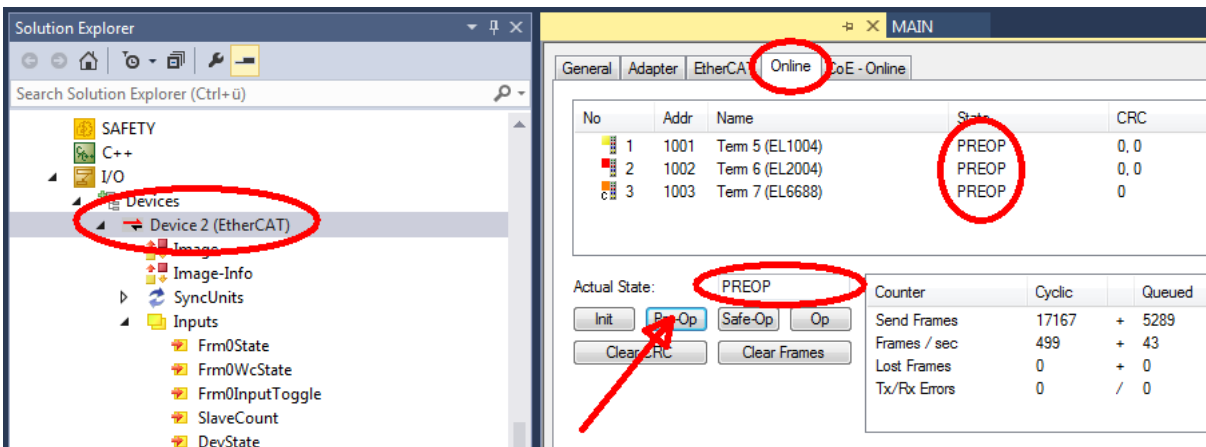
Fig. 59: Firmware Update

Proceed as follows, unless instructed otherwise by Beckhoff support. Valid for TwinCAT 2 and 3 as EtherCAT master.

- Switch TwinCAT system to ConfigMode/FreeRun with cycle time  $\geq 1$  ms (default in ConfigMode is 4 ms). A FW-Update during real time operation is not recommended.



- Switch EtherCAT Master to PreOP



- Switch slave to INIT (A)
- Switch slave to BOOTSTRAP

- Check the current status (B, C)
- Download the new \*efw file (wait until it ends). A password will not be necessary usually.



- After the download switch to INIT, then PreOP
- Switch off the slave briefly (don't pull under voltage!)
- Check within CoE 0x100A, if the FW status was correctly overtaken.

#### 7.4.4 FPGA firmware \*.rbf

If an FPGA chip deals with the EtherCAT communication an update may be accomplished via an \*.rbf file.

- Controller firmware for processing I/O signals
- FPGA firmware for EtherCAT communication (only for terminals with FPGA)

The firmware version number included in the terminal serial number contains both firmware components. If one of these firmware components is modified this version number is updated.

##### Determining the version via the TwinCAT System Manager

The TwinCAT System Manager indicates the FPGA firmware version. Click on the Ethernet card of your EtherCAT strand (Device 2 in the example) and select the *Online* tab.

The *Reg:0002* column indicates the firmware version of the individual EtherCAT devices in hexadecimal and decimal representation.

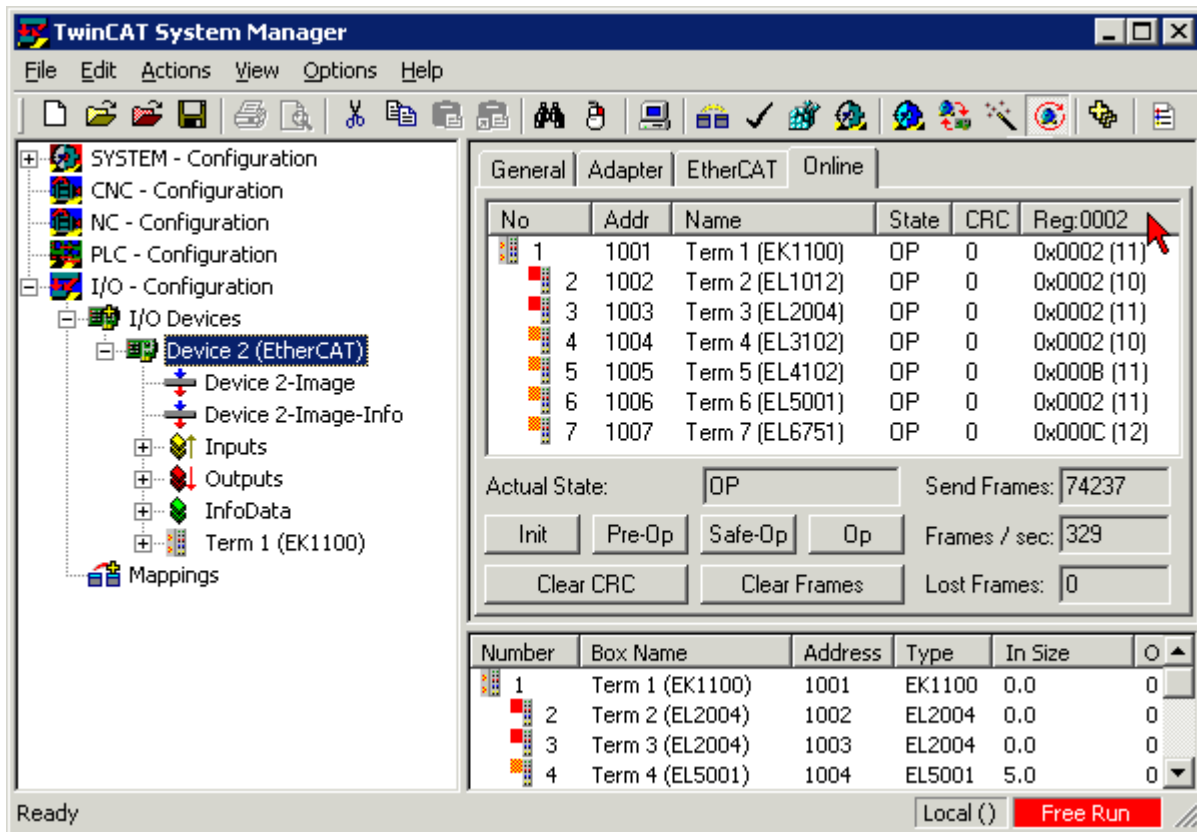


Fig. 60: FPGA firmware version definition

If the column *Reg:0002* is not displayed, right-click the table header and select *Properties* in the context menu.

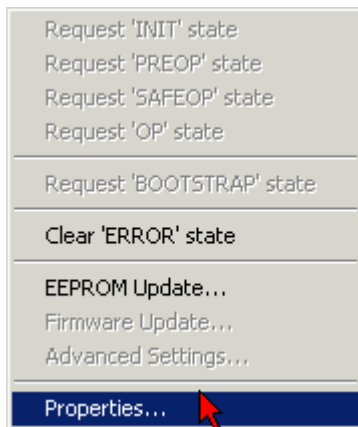


Fig. 61: Context menu *Properties*

The *Advanced Settings* dialog appears where the columns to be displayed can be selected. Under *Diagnosis/Online View* select the *'0002 ETxxxx Build'* check box in order to activate the FPGA firmware version display.

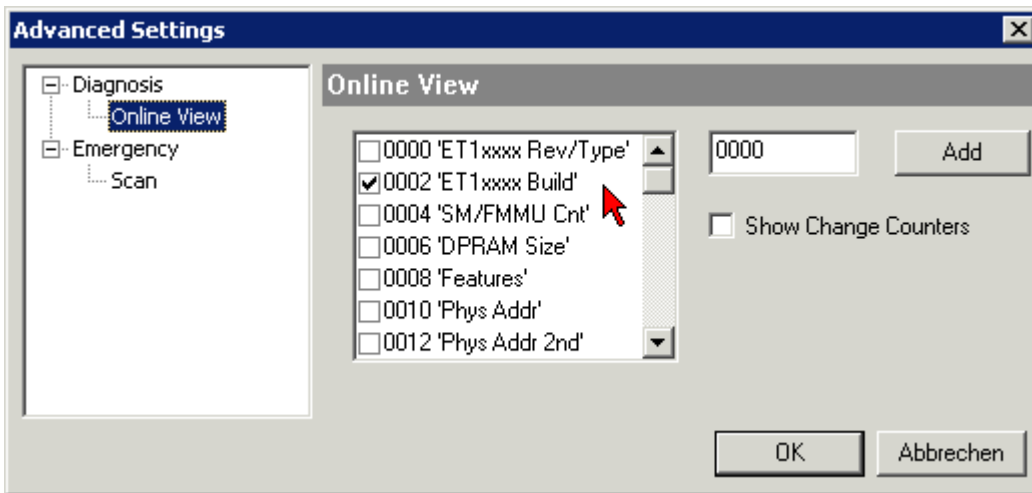


Fig. 62: Dialog *Advanced Settings*

### Update

For updating the FPGA firmware

- of an EtherCAT coupler the coupler must have FPGA firmware version 11 or higher;
- of an E-Bus Terminal the terminal must have FPGA firmware version 10 or higher.

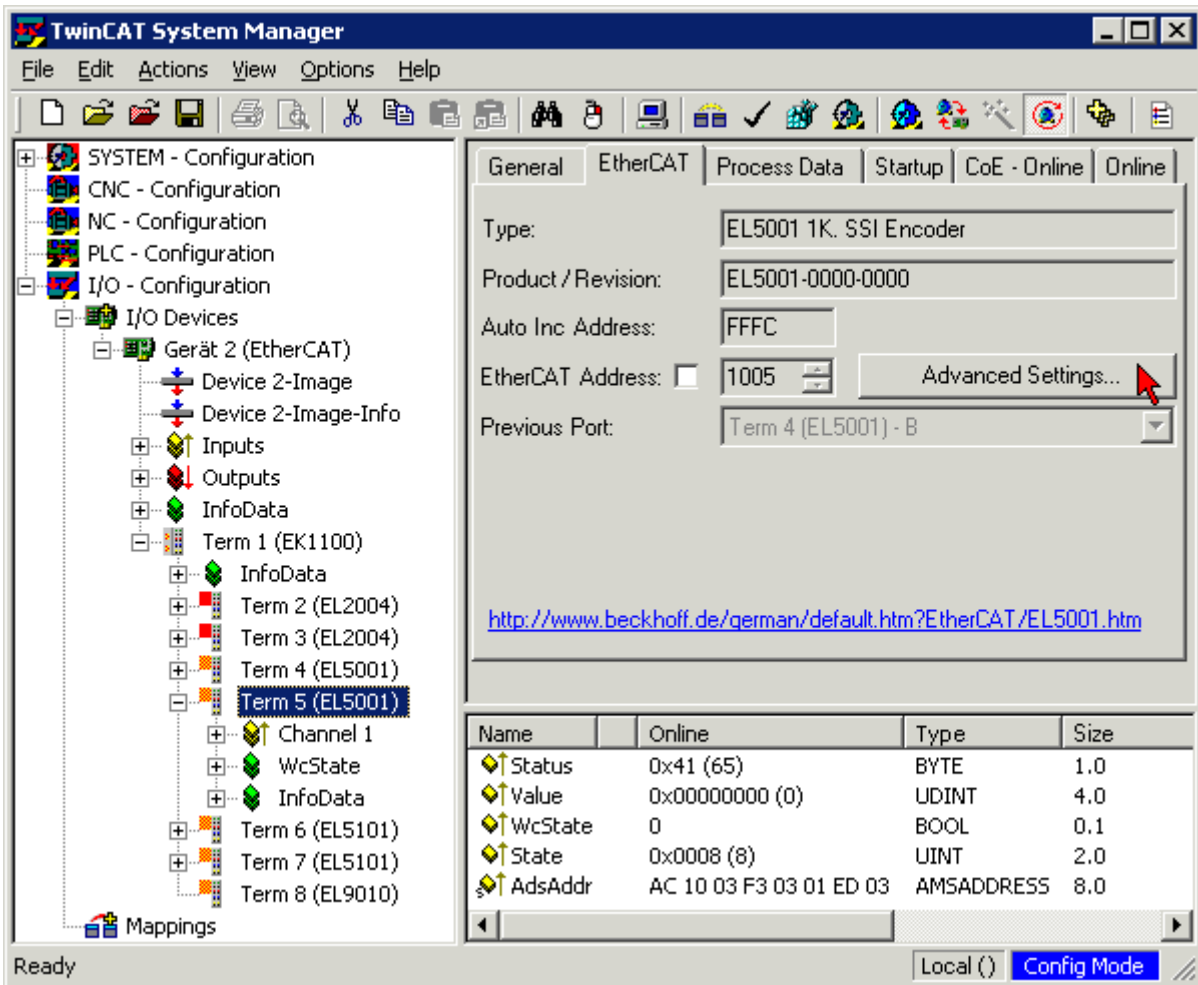
Older firmware versions can only be updated by the manufacturer!

### Updating an EtherCAT device

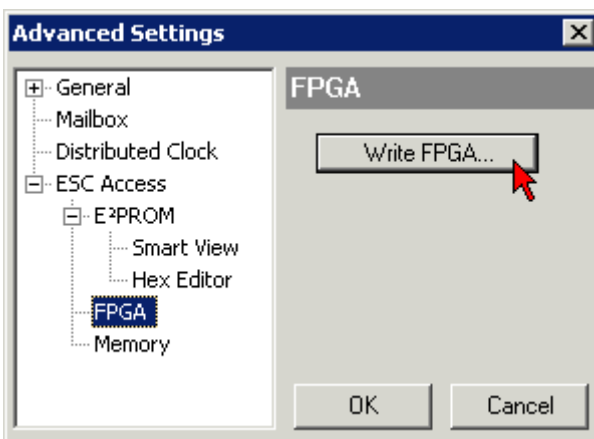
The following sequence order have to be met if no other specifications are given (e.g. by the Beckhoff support):

- Switch TwinCAT system to ConfigMode/FreeRun with cycle time  $\geq 1$  ms (default in ConfigMode is 4 ms). A FW-Update during real time operation is not recommended.

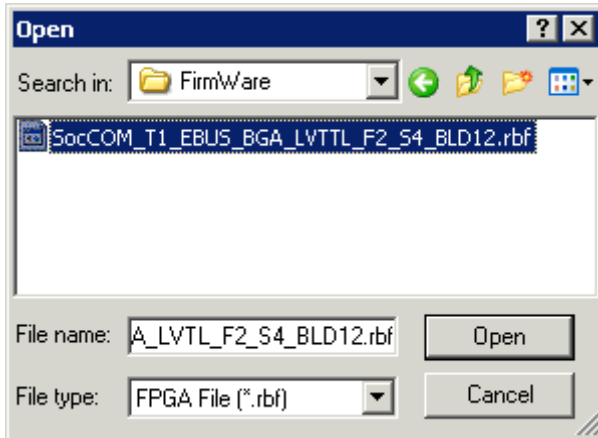
- In the TwinCAT System Manager select the terminal for which the FPGA firmware is to be updated (in the example: Terminal 5: EL5001) and click the *Advanced Settings* button in the *EtherCAT* tab:



- The *Advanced Settings* dialog appears. Under *ESC Access/E<sup>2</sup>PROM/FPGA* click on *Write FPGA* button:



- Select the file (\*.rbf) with the new FPGA firmware, and transfer it to the EtherCAT device:



- Wait until download ends
- Switch slave current less for a short time (don't pull under voltage!). In order to activate the new FPGA firmware a restart (switching the power supply off and on again) of the EtherCAT device is required.
- Check the new FPGA status

### NOTICE

#### **Risk of damage to the device!**

A download of firmware to an EtherCAT device must not be interrupted in any case! If you interrupt this process by switching off power supply or disconnecting the Ethernet link, the EtherCAT device can only be recommissioned by the manufacturer!

## 7.4.5 Simultaneous updating of several EtherCAT devices

The firmware and ESI descriptions of several devices can be updated simultaneously, provided the devices have the same firmware file/ESI.

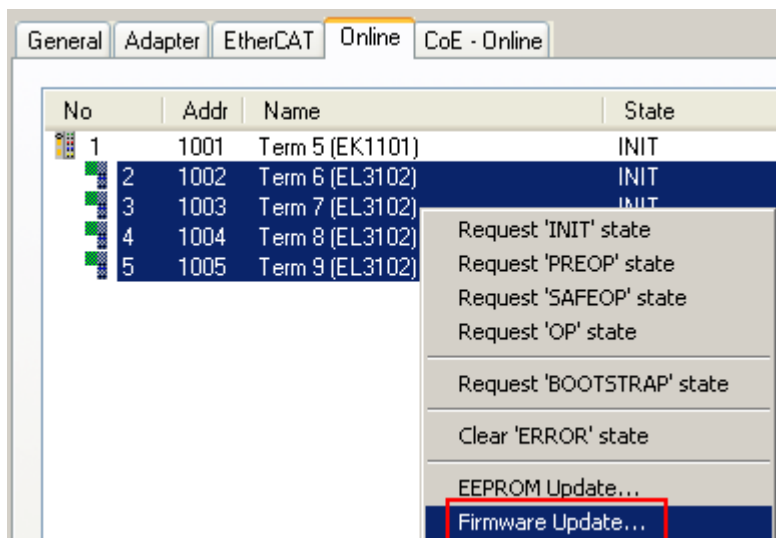


Fig. 63: Multiple selection and firmware update

Select the required slaves and carry out the firmware update in BOOTSTRAP mode as described above.

## 7.5 Master device file GSDML

The GSDML file describes a PROFINET device. This file is necessary for the PROFINET Controller, and must be integrated in the corresponding configuration software. You can find the required GSDML files in the TwinCAT\IO\PROFINET folder, or on the [website](#).

Comment	GSDML File Name*	PROFINET Device
Supplement PROFINET Device	GSDML-V2.1-beckhoff-TCPNDevice-20091009	PROFINET device for FC9xxx cards with Intel chipset or Ethernet interfaces with Intel chipset, for OS with XP, XPemb
Supplement PROFINET Device CE	GSDML-V2.1-beckhoff-TCPNDevice-20091009	PROFINET device for FC9xxx cards with Intel chipset or Ethernet interfaces with Intel chipset, for OS CE
EL6631-0010	GSDML-V2.2-beckhoff-EL6631-20100309.xml	EL6631-0010

\* The file name may change as new features or versions are introduced.



## 7.6 Support and Service

Beckhoff and their partners around the world offer comprehensive support and service, making available fast and competent assistance with all questions related to Beckhoff products and system solutions.

### Beckhoff's branch offices and representatives

Please contact your Beckhoff branch office or representative for local support and service on Beckhoff products!

The addresses of Beckhoff's branch offices and representatives round the world can be found on her internet pages: [www.beckhoff.com](http://www.beckhoff.com)

You will also find further documentation for Beckhoff components there.

### Support

The Beckhoff Support offers you comprehensive technical assistance, helping you not only with the application of individual Beckhoff products, but also with other, wide-ranging services:

- support
- design, programming and commissioning of complex automation systems
- and extensive training program for Beckhoff system components

Hotline: +49 5246 963 157  
e-mail: [support@beckhoff.com](mailto:support@beckhoff.com)  
web: [www.beckhoff.com/support](http://www.beckhoff.com/support)

### Service

The Beckhoff Service Center supports you in all matters of after-sales service:

- on-site service
- repair service
- spare parts service
- hotline service

Hotline: +49 5246 963 460  
e-mail: [service@beckhoff.com](mailto:service@beckhoff.com)  
web: [www.beckhoff.com/service](http://www.beckhoff.com/service)

### Headquarters Germany

Beckhoff Automation GmbH & Co. KG

Hülshorstweg 20  
33415 Verl  
Germany

Phone: +49 5246 963 0  
e-mail: [info@beckhoff.com](mailto:info@beckhoff.com)  
web: [www.beckhoff.com](http://www.beckhoff.com)



More Information:  
[www.beckhoff.com/EL6631-0010](http://www.beckhoff.com/EL6631-0010)

Beckhoff Automation GmbH & Co. KG  
Hülshorstweg 20  
33415 Verl  
Germany  
Phone: +49 5246 9630  
[info@beckhoff.com](mailto:info@beckhoff.com)  
[www.beckhoff.com](http://www.beckhoff.com)

