

Operating Instructions | EN

MX8911

TwinSAFE drive option card for MO7221 drives with STO/SS1



Table of contents

1	Notes on the documentation.....	5
1.1	Disclaimer.....	5
1.1.1	Trademarks	5
1.1.2	Limitation of liability	5
1.1.3	Copyright.....	5
1.1.4	Third-party trademarks.....	5
1.2	Documentation issue status	6
1.3	Version history of the TwinSAFE product	6
1.4	References	6
1.5	Staff qualification.....	7
1.6	Safety and instruction.....	8
1.7	Support and Service.....	9
1.8	Notes on information security.....	10
2	For your safety	11
2.1	Due diligence	11
2.2	Safety image signs	11
2.3	General safety instructions.....	12
2.3.1	Before operation.....	12
2.3.2	During operation.....	13
2.3.3	After operation.....	13
3	Product overview	14
3.1	Product description	14
3.2	Block diagram	15
3.3	Drive module variants	16
3.4	Laser image	17
3.5	Intended use	17
4	Technical data	18
4.1	Product data	18
4.2	Target failure measures	19
4.3	Environmental conditions	20
4.4	Project design limits MX8911	21
4.5	Error reaction	22
4.5.1	Global Shutdown.....	22
4.5.2	Global Fault.....	22
4.5.3	Module Shutdown	22
4.6	Lifetime.....	23
5	Initial project.....	24
5.1	Description	24
5.2	Factory setting STO in the TwinSAFE drive option card	24
5.3	Process image	25
5.3.1	Input	25
5.3.2	Output	25
6	Configuration in TwinCAT	27

6.1	Adding an MX8911	27
6.2	Using the MX8911 with the Initial project	27
6.3	Use of the MX8911 with a safety-related user program	29
6.4	Manual creation of safety functions	31
6.5	Address setting	31
6.6	Safety parameters	35
6.6.1	Single-axis variant	35
6.6.2	Double-axis variant	35
7	Local process image	36
7.1	Input	36
7.1.1	Single-axis variant	36
7.1.2	Double-axis variant	36
7.2	Output	37
7.2.1	Single-axis variant	37
7.2.2	Double-axis variant	38
8	Appendix	40
8.1	Volatility	40
8.2	Focus of certificates	41

1 Notes on the documentation

1.1 Disclaimer

Beckhoff products are subject to continuous further development. We reserve the right to revise the documentation at any time and without notice. No claims for the modification of products that have already been supplied may be made on the basis of the data, diagrams, and descriptions in this documentation.

In this documentation, we define all permissible use cases whose properties and operating conditions we can guarantee. The use cases we define are fully tested and certified. Any other use cases not described in this documentation, require the approval of Beckhoff Automation GmbH & Co KG.

1.1.1 Trademarks

Beckhoff®, TwinCAT®, TwinCAT/BSD®, TC/BSD®, EtherCAT®, EtherCAT G®, EtherCAT G10®, EtherCAT P®, Safety over EtherCAT®, TwinSAFE®, XFC®, XTS® and XPlanar® are registered and licensed trademarks of Beckhoff Automation GmbH.

The use of other brand names or designations by third parties may lead to an infringement of the rights of the owners of the corresponding designations.



EtherCAT® is a registered trademark and patented technology, licensed by Beckhoff Automation GmbH.



Safety over EtherCAT® is a registered trademark and patented technology, licensed by Beckhoff Automation GmbH.

1.1.2 Limitation of liability

All components in this product as described in the operating instructions are delivered in a specific configuration of hardware and software, depending on the application regulations. Modifications and changes to the hardware and/or software configuration that go beyond the documented options are prohibited and nullify the liability of Beckhoff Automation GmbH & Co. KG.

The following is excluded from the liability:

- Failure to observe these operating instructions
- Improper use
- Use of untrained personnel
- Use of unauthorized spare parts

1.1.3 Copyright

© Beckhoff Automation GmbH & Co. KG, Germany.

The distribution and reproduction of this document as well as the use and communication of its contents without express authorization are prohibited.

Offenders will be held liable for the payment of damages. All rights reserved in the event of the grant of a patent, utility model or design.

1.1.4 Third-party trademarks

Trademarks of third parties may be used in this documentation. You can find the trademark notices here: <https://www.beckhoff.com/trademarks>.

1.2 Documentation issue status

Issue	Comment
1.2.0	<ul style="list-style-type: none"> • "Factory settings project" renamed to "Initial project" • Chapter "Factory settings process image in the I/O tree" renamed to "Process image"
1.1.0	<ul style="list-style-type: none"> • Document subtitle changed from "TwinSAFE drive option card for MX-System drive modules with STO/SS1" to "TwinSAFE drive option card for MO7221 drives with STO/SS1" • Chapter "Drive module variants" adapted
1.0.0	<ul style="list-style-type: none"> • First released version
0.0.1	<ul style="list-style-type: none"> • Preliminary (internal only)

Origin of the document

The original documentation is written in German. All other languages are derived from the German original.

Product features

Only the product properties specified in the current operating instructions are valid. Further information given on the product pages of the Beckhoff homepage, in emails or in other publications is not authoritative.

Currentness

Check whether you are using the current and valid version of this document. The current version can be downloaded from the Beckhoff homepage at <http://www.beckhoff.com/twinsafe>. In case of doubt, contact Support and Service ► 9].

1.3 Version history of the TwinSAFE product

This version history lists the firmware and hardware version numbers. You will also find an overview of the available ModuleIdents and which firmware supports which ModuleIdents. See the following table.

ModuleIdent	Firmware version	Hardware version
0x006b0076	1 axis STO	00
0x006b0074	2 axes STO	00

1.4 References

No.	Issue	Title / description
[1]	/	MX-System product manuals
[2]	/	MX-System system manual
[3]	1.4.1 or newer	Operating instructions for EL6910 TwinSAFE Logic module The document contains a description of the logic functions of the EL6910 and their programming
[4]	3.1.0 or newer	Documentation for TwinSAFE Logic FB The document describes the safety function blocks that are available in the EL6910 and form the safety application.
[5]	1.8.0 or newer	TwinSAFE Application Guide The Application Guide provides the user with examples for the calculation of safety parameters for safety functions according to the standards DIN EN ISO 13849-1 and EN 62061 or EN 61508:2010, such as are typically used on machines.
[6]	2023/1230	Regulation (EU) 2023/1230 of the European Parliament and of the Council of June 14, 2023 on machinery and repealing Directive 2006/42/EC of the European Parliament and of the Council and Council Directive 73/361/EEC

No.	Issue	Title / description
		This regulation, also known as the Machinery Regulation, defines requirements for the placing on the market of machines and machine-like components, such as safety components.
[7]	2017	EN 61511-1:2017 The standard serves as a basic safety standard for functional safety in the process industry and is tailored to its safety-related systems.

Document classification in the overall documentation

This documentation applies exclusively to MX-System drive modules with integrated safety technology in accordance with [Drive module variants](#) ► 16].

This TwinSAFE drive option card is a permanently installed part of MX- System drive modules with integrated safety technology. For this reason, some life phases, such as decommissioning and disposal, apply exclusively to the MX-System drive modules as an overall system and are not listed in this documentation.

WARNING

Observe TwinSAFE drive option card documentation as a matter of priority

The values and specifications defined in these operating instructions apply in addition and primarily to the documents [1] and [2] at References. Observe these operating instructions as a matter of priority.

Non-observance can endanger safety.

1.5 Staff qualification

These operating instructions are intended exclusively for trained specialists in control technology and automation with the relevant knowledge.

The trained specialist personnel must ensure that the applications and use of the described product meet all safety requirements. This includes all applicable and valid laws, regulations, provisions and standards.

Trained specialists

Trained specialists have extensive technical knowledge from studies, apprenticeships or technical training. Understanding of control technology and automation is available. Trained specialists can:

- Independently identify, avoid and eliminate sources of hazard.
- Apply relevant standards and directives.
- Implement specifications from accident prevention regulations.
- Evaluate, prepare and set up the workplaces.
- Evaluate, optimize and execute work independently.

1.6 Safety and instruction

Read the contents that refer to the activities you have to perform with the product. Always read the chapter For your safety in the operating instructions.

Observe the warnings in the chapters so that you can handle and work with the product as intended and safely.

Explanation of symbols

Various symbols are used for a clear arrangement:

- 1. The numbering indicates an action that should be taken.
- The bullet point indicates an enumeration.
- [...] The square brackets indicate cross-references to other text passages in the document.
- [1] The number in square brackets indicates the numbering of a referenced document.

The signal words used in the documentation are classified below.

Signal words

Warning of personal injuries

 DANGER
Hazard with high risk of death or serious injury.
 WARNING
Hazard with medium risk of death or serious injury.
 CAUTION
There is a low-risk hazard that could result in medium or minor injury.

Warning of damage to property or environment

NOTICE
Notes
The environment, equipment, or data may be damaged.

Information on handling the product



This information includes, for example:
Recommendations for action, assistance or further information on the product.

1.7 Support and Service

Beckhoff and their partners around the world offer comprehensive support and service, making available fast and competent assistance with all questions related to Beckhoff products and system solutions.

Download finder

Our [download finder](#) contains all the files that we offer you for downloading. You will find application reports, technical documentation, technical drawings, configuration files and much more.

The downloads are available in various formats.

Beckhoff's branch offices and representatives

Please contact your Beckhoff branch office or representative for [local support and service](#) on Beckhoff products!

The addresses of Beckhoff's branch offices and representatives round the world can be found on our internet page: www.beckhoff.com

You will also find further documentation for Beckhoff components there.

Beckhoff Support

Support offers you comprehensive technical assistance, helping you not only with the application of individual Beckhoff products, but also with other, wide-ranging services:

- support
- design, programming and commissioning of complex automation systems
- and extensive training program for Beckhoff system components

Hotline: +49 5246 963-157
e-mail: support@beckhoff.com

Beckhoff Service

The Beckhoff Service Center supports you in all matters of after-sales service:

- on-site service
- repair service
- spare parts service
- hotline service

Hotline: +49 5246 963-460
e-mail: service@beckhoff.com

Beckhoff Headquarters

Beckhoff Automation GmbH & Co. KG

Huelshorstweg 20
33415 Verl
Germany

Phone: +49 5246 963-0
e-mail: info@beckhoff.com
web: www.beckhoff.com

1.8 Notes on information security

The products of Beckhoff Automation GmbH & Co. KG (Beckhoff), insofar as they can be accessed online, are equipped with security functions that support the secure operation of plants, systems, machines and networks. Despite the security functions, the creation, implementation and constant updating of a holistic security concept for the operation are necessary to protect the respective plant, system, machine and networks against cyber threats. The products sold by Beckhoff are only part of the overall security concept. The customer is responsible for preventing unauthorized access by third parties to its equipment, systems, machines and networks. The latter should be connected to the corporate network or the Internet only if appropriate protective measures have been set up.

In addition, the recommendations from Beckhoff regarding appropriate protective measures should be observed. Further information regarding information security and industrial security can be found in our <https://www.beckhoff.com/secguide>.

Beckhoff products and solutions undergo continuous further development. This also applies to security functions. In light of this continuous further development, Beckhoff expressly recommends that the products are kept up to date at all times and that updates are installed for the products once they have been made available. Using outdated or unsupported product versions can increase the risk of cyber threats.

To stay informed about information security for Beckhoff products, subscribe to the RSS feed at <https://www.beckhoff.com/secinfo>.

2 For your safety

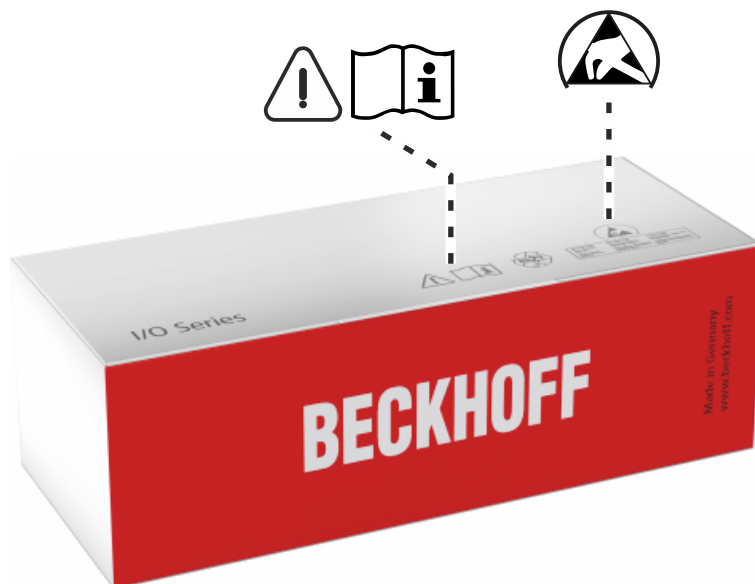
2.1 Due diligence

The operator must comply with all the requirements and notes specified in these operating instructions in order to fulfill his duty of care. This includes in particular that you

- comply with the provisions defined in the chapter Limitation of liability [► 5].
- only operate the TwinSAFE drive option card when it is in perfect working order.
- provide the operating instructions in a legible condition and complete at the place of use of the TwinSAFE drive option card.
- do not remove the safety markings attached to the overall system and maintain their legibility.

2.2 Safety image signs

Beckhoff products feature safety pictograms, either on stickers or printed, which vary depending on the product. They serve to protect people and to prevent damage to the products. Safety pictograms may not be removed and must be legible for the user.



Read and observe the operating instructions

Commissioning is only permitted if the operating instructions have been read and understood beforehand. This applies in particular to the safety instructions and the warnings.



Electrostatic sensitive components

Work with and on the TwinSAFE component is only permitted at protected workplaces.

2.3 General safety instructions

2.3.1 Before operation

Use in machines in accordance with the Machinery Directive and EN 61511

Only use the TwinSAFE component in machines that comply with the Machinery Directive and the EN 61511 standard for the process industry. This is how you ensure safe operation.

See the documents [6] and [7] at References.

Certification for third-party motors invalid

The TÜV SÜD certificate applies to the list of approved motors. Other motors are not covered by the certificate. When using a third-party motor, you are responsible for the attachment and FMEA.

Non-observance may endanger product safety.

Installation according to MX-System manual

TwinSAFE components must be mounted in a control cabinet or terminal box for operation. Install MX-System drive modules in accordance with document [3] at References.

Ensure traceability

Ensure traceability of the TwinSAFE drive option card via the serial number of the overall system.

Using the SELV/PELV power supply unit

Use a SELV/PELV power supply unit with an output voltage limitation in the event of a fault of $U_{\max} = 36 \text{ V}_{\text{DC}}$ for the power supply.

Commissioning test

Before commissioning, application errors and wiring faults must be excluded. Before commissioning, carry out a commissioning test. After a successful commissioning test, you can use the TwinSAFE drive option card for the intended safety-related task.

Use of permissible engineering tools and procedures

The TÜV SÜD certificate applies to the overall system with integrated TwinSAFE drive option card, the function blocks available in it, the documentation and the engineering tool. [TE9000 - TwinCAT 3 Safety Editor](#), [TE9200 - TwinSAFE Loader](#) and [TE5950 - TwinCAT 3 Drive Manager 2 Setup](#) are permitted as engineering tools. Use only the latest versions of the engineering tools. You will find this on the [Beckhoff website](#).

Procedures or engineering tools that deviate from this are not covered by the certificate. This is especially true for externally generated xml files for the TwinSAFE import.

Control of the parameterization of the TwinSAFE drive option card

The TwinSAFE drive option card determines errors in the parameterization, but no logical testing of the parameters or the loaded safety program can take place. Ensure by means of an acceptance test that the parameterization and the safety program are correct for the use case. This test must be performed by the machine manufacturer.

The combination of MX-System drive modules and MX8911 may be used in production only when this test has produced a positive result for all safety-relevant functions.

External safety measures

External safety measures are required in the following cases:

- In the event of incorrect parameterization of the overall system, which can lead to shutdown, for example because the current controller is too sluggish or oscillates
- For loads that cannot be braked by the overall system because the overall system is under-dimensioned
- When executing the safety function STO
- The STO error reaction is executed if the TwinSAFE drive option card determines an error
- Line interruptions that lead to shutdown
- Faults and interruptions in the EtherCAT communication that lead to shutdown
- Activation or restart of a project in TwinCAT, which can lead to shutdown
- Downloading the safety project to the TwinSAFE logic or the MX8911 leading to switch-off

As a result, the motors are not braked, but switched torque-free. This leads to the motors coasting to a halt. The duration of this coasting depends on how much kinetic energy is present in the system. With suspended or pulling loads the motors may also accelerate.

To prevent this, observe the following measures:

- Provide appropriate external safety measures, such as mechanical service brakes.
- Avoid incorrect parameterization or dimensioning of the overall system.
- Avoid line interruptions as well as faults and interruptions in the EtherCAT communication.

Caution: possible motor movements

Even if STO is triggered with interrupted PWM control, a jerky movement (with a maximum of 180° divided by the number of pole pairs) on the motor can occur, for example due to faults in the power circuit.

Consider this in your risk and hazard analysis.

2.3.2 During operation

Risk of injury

Basically, electronic devices are not fail-safe. The machine manufacturer is responsible for ensuring that the connected motors and the machine are brought into a safe state in the event of a voltage outage in the drive system.

Impairment due to interference emissions

Do not operate the following devices in the vicinity of the overall system: mobile phones, radio equipment, transmitters or high-frequency systems.

The overall system with integrated TwinSAFE drive option card complies with the requirements of the applicable standards for electromagnetic compatibility with regard to spurious radiation and immunity to interference. If you exceed the limits for interference emissions specified in the standards, the function of the TwinSAFE drive option card may be impaired.

2.3.3 After operation

De-energize and switch off the overall system before working on it

Check all safety-relevant equipment for functionality before working on the overall system. Secure the working environment. Secure the machine or plant against being inadvertently started up.

3 Product overview

3.1 Product description

The MX8911 TwinSAFE drive option card is an optional extension of the Beckhoff MX-System drive modules and is permanently installed in them. The drive module forms the overall system. The card enables you to define the safety functions by application. The type key of the drive module determines whether it is a module with STO or Safe Motion. In the delivery state, a initial project with the safety function STO according to EN 61800-5-2 is integrated as an example. For further information, please refer to the chapter [Initial project](#) [► 24].

If the STO function integrated in the factory state is not suitable for your application, you have the option of creating application-specific projects and loading them onto the TwinSAFE drive option card.

The entire parameterization of the TwinSAFE drive option card is carried out in the same way as the programming and configuration of a safety application in the [TE9000 - TwinCAT 3 Safety Editor](#). For the exchange of the overall system you have the possibility to use the Backup&Restore function known from the EL69x0. Further information on this can be found in the EL6910 operating instructions. See document [3] at .

For STO, you can order the MX-System drive modules mentioned in chapter [Drive module variants](#) [► 16] with an MX8911 as integrated safety technology.

3.2 Block diagram

The TwinSAFE card is permanently integrated in the servo drive and has a passing or interrupting effect on the PWM control signals between the drive logic and output stage.

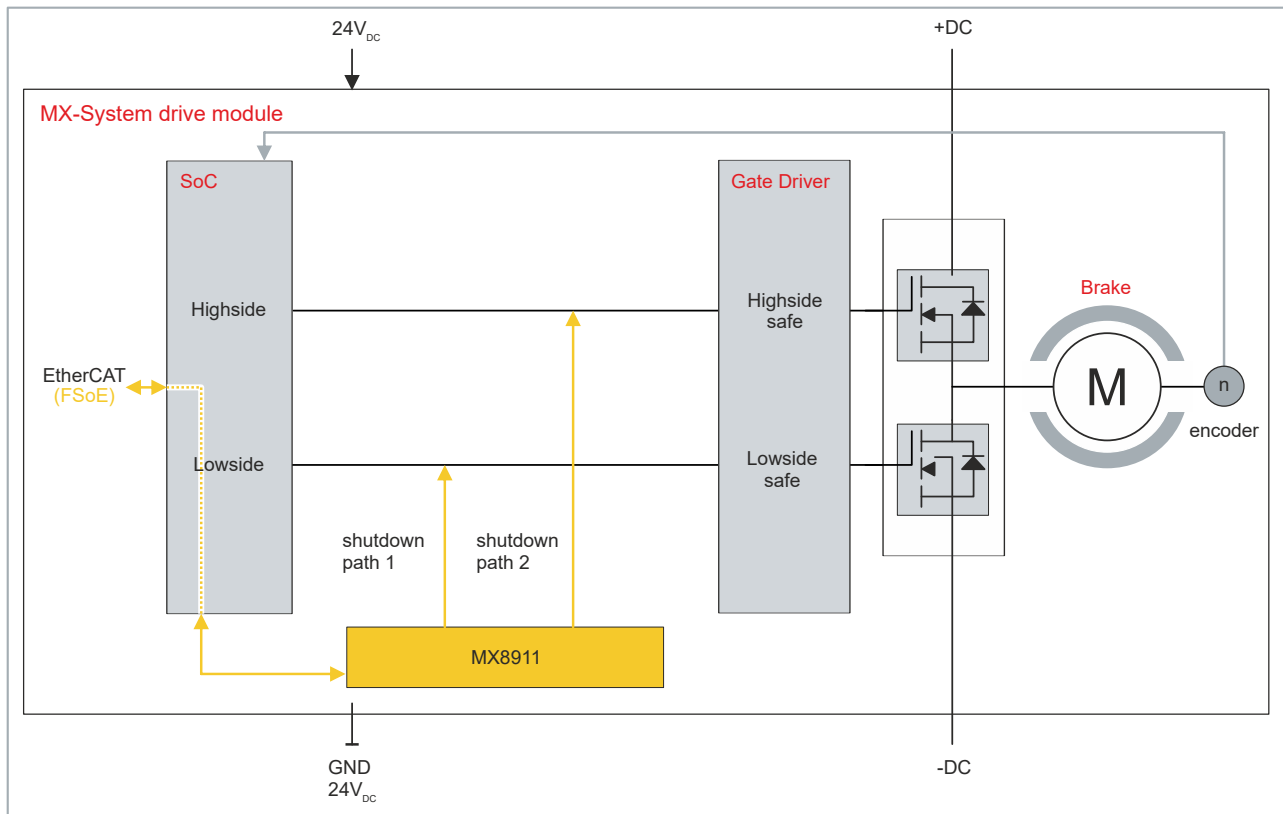
WARNING

Consider possible motor movements

Even if STO is triggered with interrupted PWM control, a jerky movement (with a maximum of 180° per pole pair) on the motor can occur, for example due to faults in the power circuit.

Consider this in your risk and hazard analysis.

The block diagram describes the mode of operation of the TwinSAFE card within the servo drive.



The TwinSAFE card has an internal two-channel structure based on a 1002 structure.

3.3 Drive module variants

This documentation applies to the following drive module variants:

- MO7221-9016-1114
- MO7221-9016-1124

The following safety functions in accordance with EN 61800-5-2 can be implemented with these drive module variants.

Safety functions			
Stop functions			
STO	Safe torque off		
SS1	Safe stop 1	- t	Time controlled

3.4 Laser image

Since the TwinSAFE drive option card is permanently installed in the overall device, only the laser image of the overall device exists.

3.5 Intended use

Operate the TwinSAFE component exclusively for the intended activities defined in this documentation, taking into account the prescribed values.

The TwinSAFE drive option card is designed for machine safety functions and directly associated industrial automation tasks. The TwinSAFE drive option cards are used to switch the MX-System drive module torque-free in hazardous situations.

The TwinSAFE drive option cards are therefore only approved for applications with a defined fail-safe state. This safe state is the wattless state.

Observe the intended use of the MX-System drive module in accordance with document [2] at [References](#) [► 6].

WARNING

Improper use

Any use which exceeds the permissible written values from the chapter [Technical data](#) [► 18] or which does not observe other specifications from these operating instructions or other documents of the overall documentation is considered to be not in accordance with the intended use and is therefore prohibited.

This applies in particular to the use cases defined by Beckhoff Automation, which have been fully tested and certified and whose properties and operating conditions can be guaranteed. Use cases beyond this are regarded as inappropriate and require the approval of Beckhoff Automation.

Improper use will result in loss of safety and invalidation of certifications and approval.

4 Technical data

4.1 Product data

The current certificates of all TwinSAFE products with the underlying standards and directives can be found at <https://www.beckhoff.com/en-en/support/download-finder/certificates-approvals/>.

Product data		Explanation
Hardware		
• Number of axes	1 or 2 axes	For more information, see chapter Drive module variants [► 16] .
• Number of switch-off channels	2 channels per axis	
Reaction times		
• Cycle time	approx. 10 ms according the project size	The internal cycle time is the runtime of the logic task plus the time difference until it is called again.
• Fault reaction time	Adjustable ≤ watchdog time	
• Watchdog time	2 ms to 60000 ms	
Process image		
• Input	6 to 51 bytes (1 to 24 bytes Safe Data)	For more information, see chapter Local process image [► 36] .
• Output	6 to 59 bytes (1 to 28 bytes Safe Data)	
Miscellaneous		
• Number of downloads	max. 10,000	When 90% of this value is reached, a Diag message is issued as a warning for each further write access. When 100% is reached, no further write access is possible and the device goes into the GLOBAL_SHUTDOWN state as soon as another write access occurs.

Further product data can be found in the respective product manual. You can find the product manuals online in the [Download finder](#).

4.2 Target failure measures



Calculation of the $MTTF_D$ value from the PFH_D value

For calculation and estimation of the values described in the following table, refer to the following documentation:

- TwinSAFE Application Guide
- EN ISO 13849-1:2023; table K.1.

In terms of target failure measures, the FSoE communication is considered with 1 % of SIL 3 according to the protocol specification.

Target failure measures			Explanation
Limit value	Single-axis	Double-axis	
Lifetime	20 years	20 years	
Proof test interval	/	/	Special proof tests are not required during the entire lifetime of the TwinSAFE drive option card.
PFH_D	4.95E-09	6.77E-09	
PFD_{avg}	6.81E-05	7.16E-05	
$MTTF_D$	High	High	
DC	High	High	
Performance Level	e	e	According to EN ISO 13849-1:2023.
Category	4	4	According to EN ISO 13849-1:2023.
SFF	99.57 %	99.59 %	
HFT	1	1	
Element classification	Type B	Type B	According to EN 61508-2:2010.

For further information, please refer to the chapter [Lifetime](#).

4.3 Environmental conditions

Beckhoff products are designed for operation under certain environmental conditions, which vary according to the product. The following specifications must be observed for operation and environment in order to achieve the optimum service life of the products as well as to ensure product safety.

WARNING

Do not use TwinSAFE drive option cards under the following operating conditions:

- under the influence of ionizing radiation (exceeding the natural background radiation)
- in corrosive environments¹
- in an environment that would lead to impermissible contamination of the TwinSAFE drive option card

¹ *A corrosive environment exists when corrosion damage becomes apparent.*

The environmental conditions of this TwinSAFE drive option card are defined by its installation in the MX-System drive module. For the conditions, see document [2] at [References](#) [► 6].

4.4 Project design limits MX8911



Project design limits

The maximum project design size of the TwinSAFE drive option card is limited by the available memory. This is managed dynamically. The values specified in the following table are therefore only guide values and may differ from the actual values, depending on the safety project.

Process image size	Input process image: 6 to 51 bytes (1 to 24 bytes of Safe Data) Output process image: 6 to 59 bytes (1 to 28 bytes of Safe Data)
TwinSAFE connections	maximum 8 (Maximum 14 CRCs in total - 1 CRC is required for a TwinSAFE connection with 1 or 2 bytes of safe data).
Safe data per TwinSAFE connection	maximum 24 bytes (telegram length 51 bytes)
TwinSAFE function blocks	maximum 512 (ESTOP with complete input and output mapping)
TwinSAFE Groups	maximum 128
TwinSAFE users	maximum 40
Standard PLC inputs	dynamic (memory-dependent), max. 54 bytes
Standard PLC outputs	dynamic (memory-dependent), max. 62 bytes

4.5 Error reaction

The TwinSAFE drive option card performs a permanent self-diagnosis. In the event of a detected malfunction, the TwinSAFE drive option card switches to the safe state according to the fail-safe principle.

Depending on the severity of the cause of the error, the TwinSAFE drive option card changes to one of the following error states:

- Global Shutdown
- Global Fault
- Module Shutdown

4.5.1 Global Shutdown

If transient faults are detected, such as overvoltage, undervoltage or EMC influences, the TwinSAFE component switches to the "Global Shutdown" state.

This operating state is a safe state and temporarily shuts down the TwinSAFE drive option card.

Reset the operating state by disconnecting and reconnecting the 24 V supply to the overall system.

4.5.2 Global Fault

When errors are detected that affect the integrity of the safety logic, such as memory errors, the TwinSAFE component card switches to the "Global Fault" state.

This operating state permanently shuts down the TwinSAFE component.

Replace the overall system.

4.5.3 Module Shutdown

If software errors are detected, the affected software module switches to the "Module Shutdown" state.

This operating state is a safe state and temporarily shuts down the software module.

An Error Acknowledge resets the operating state.

4.6 Lifetime

The TwinSAFE Drive option card has a lifetime of 20 years, during which the target failure measures are guaranteed. For more information, see the chapter [Target failure measures](#) [► 19].

The lifetime starts from the date of manufacture as indicated on the drive module's name plate. For more information, see document [1] at [References](#) [► 6].

WARNING

Replace drive module after 20 years

After a lifetime of 20 years, the safety parameters are no longer guaranteed.

Use beyond the lifetime may result in loss of safety.

Due to the high diagnostic coverage within the lifecycle no special proof tests are required.

The internal TwinSAFE drive option card has a unique serial number that you can read out via CoE.

The date of manufacture and the serial number of the drive module can be found on its name plate. See document [1] at [References](#) [► 6].

5 Initial project

WARNING

Setup of a restart lock

Set up a restart lock in the higher-level safety controller.

Alternatively, you have the option of setting up a restart lock by changing the safety-oriented program on the TwinSAFE drive option card.

An uncontrolled restart of the overall system can lead to serious injuries.

5.1 Description

The MX-System drive module with integrated safety technology cannot be operated without safety. The MX-System drive module with integrated safety technology is supplied with a initial project as an example, which enables simple commissioning.

By using the initial project, you have the option of triggering the STO safety function via FSoE.



Address setting

In the delivery state, a safe address of "1" is set.

If you want to use more than one MX-System drive module, change the addresses of the additional MX-System drive modules to ensure specific addressing. After changing the address, it is not necessary to load the project.

For further information on address setting, please refer to the chapter [Address setting \[► 31\]](#).

5.2 Factory setting STO in the TwinSAFE drive option card

WARNING

STO switch-off paths

There are two STO switch-off paths per axis within the logic: STO_1 and STO_2. If you replace the safety logic on the TwinSAFE drive option card with a user-specific project, you must set all switch-off paths per axis.

In addition, the signal must be reported back to the MX-System drive module via the "no_STO_to_Drive" output.

A safety-oriented logic program, the initial project, is stored on the TwinSAFE drive option card in the delivery state.

You have the option to activate the STO function via a Safety over EtherCAT connection. This connection contains the STO signals for axis A and axis B. For the STO signal a logic TRUE signal is required so that movement of the axis is possible. The safety address for this connection is defined as a 16 bit value in the software.

5.3 Process image

● Process image valid for the initial project

i

Note that the process image depends on the active project and the implemented safety functions. The process image listed in this document applies exclusively to the initial project. For customer-specific projects, the process image may differ from the process image shown here. For further information on customer-specific projects, please refer to the chapter Configuration in TwinCAT.



Fig. 1: Process image factory settings project MX8911

5.3.1 Input

The process image of the input signals consists of 7 bytes of data, 2 bytes of which are usage data.

Single-axis variant

The following process image applies to the single-axis product variant.

Offset	Name	Data type	Group	Description
0.0	STO_ChA	BOOL	Safety	True: No STO, STO outputs are enabled False: STO, safe state

Double-axis variant

For a double-axis application, the following process image applies in addition to the upper process image.

Offset	Name	Data type	Group	Description
1.0	STO_ChB	BOOL	Safety	True: No STO, STO outputs are enabled False: STO, safe state

5.3.2 Output

The process image of the output signals consists of 7 bytes of data, 2 bytes of which are usage data.

Single-axis variant

The following process image applies to the single-axis product variant.

Offset	Name	Data type	Group	Description
0.0	STO_active_ChA	BOOL	Safety	State of the signal reported to the Drive Application (standard firmware) True: No STO, STO outputs are enabled False: STO, safe state

Double-axis variant

For a double-axis application, the following process image applies in addition to the upper process image.

Offset	Name	Data type	Group	Description
0.0	STO_active_ChB	BOOL	Safety	State of the signal reported to the Drive Application (standard firmware) True: No STO, STO outputs are enabled False: STO, safe state

6 Configuration in TwinCAT

6.1 Adding an MX8911

Adding an MX8911 is done in the same way as adding any other TwinSAFE component.

To add a TwinSAFE component, refer to the chapter Adding an EL6910 of document [3] at [References](#) [► 6].

6.2 Using the MX8911 with the Initial project

For more information about this project, see the chapter [Factory setting STO](#) in the TwinSAFE drive option card [► 24].

To use the MX8911 in a safety project, proceed as follows:

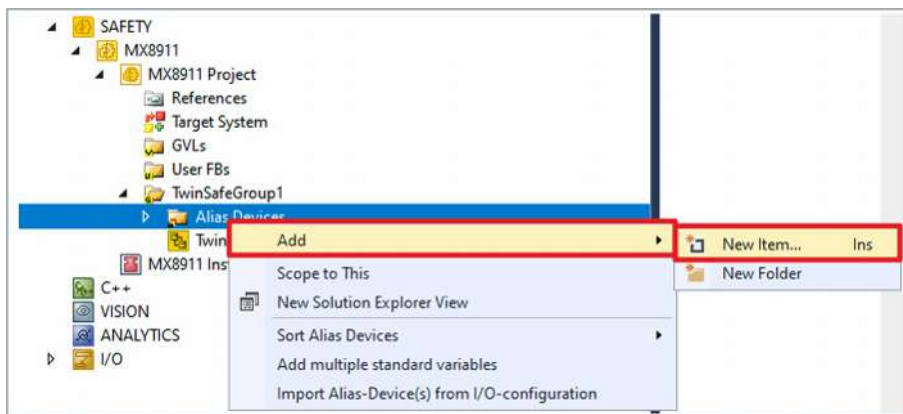


Fig. 2: Add alias device MX8911

1. Right-click on the Alias Device folder of your safety project
2. Select "New Item..." via "Add"

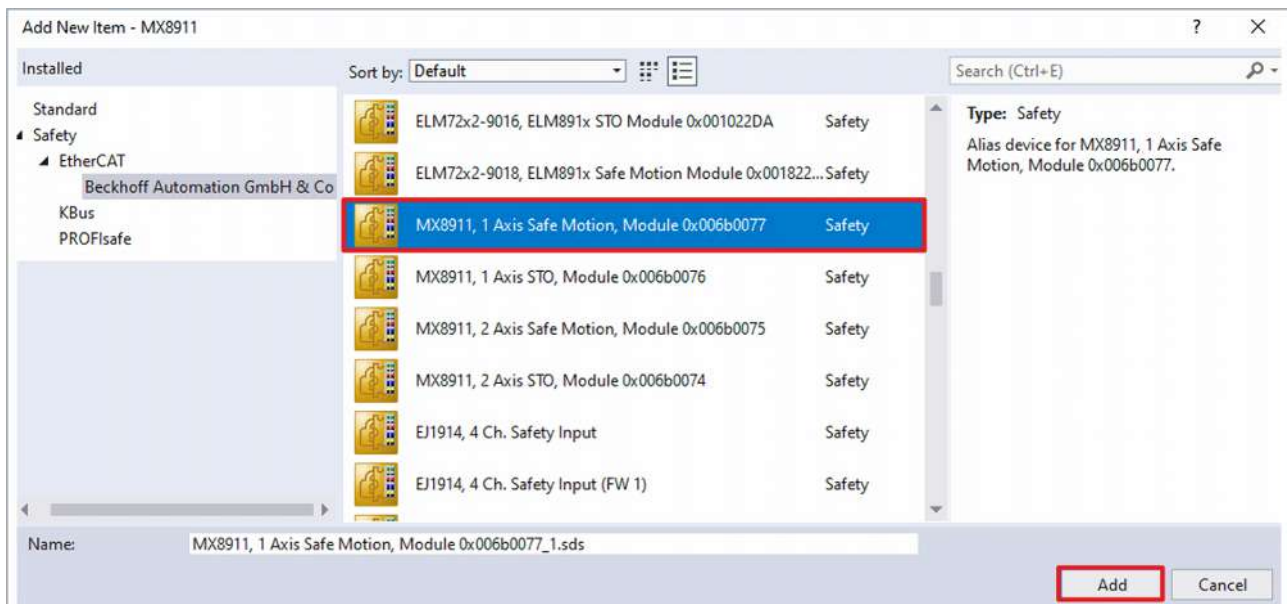


Fig. 3: Add New Item

The "Add New Item" window opens and you can select the desired Alias Device. The designation contains information about which MX8911 variant with the corresponding ModuleIdent is involved.

You can use the STO signals as safe outputs in the safety-oriented user program.

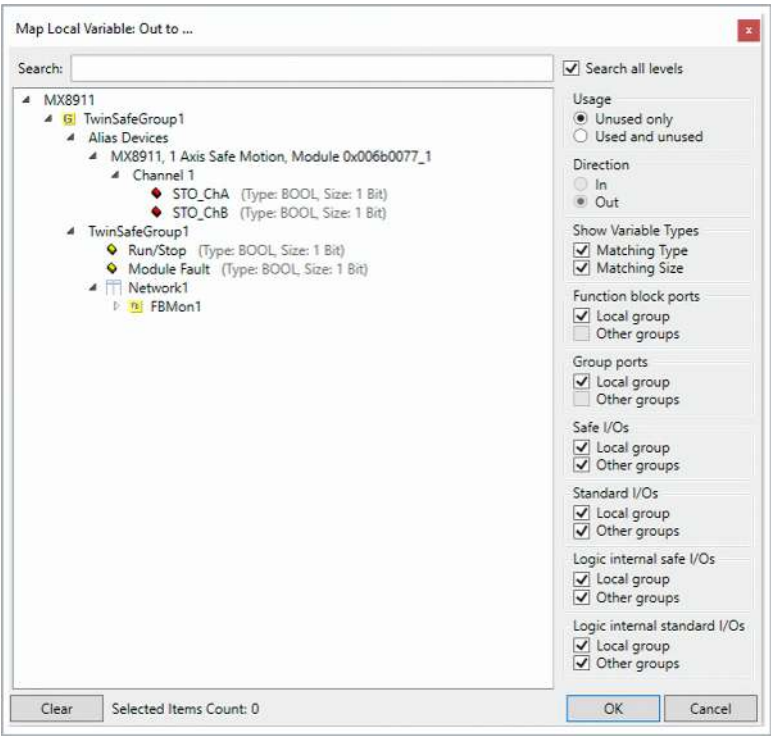


Fig. 4: Map variable

The variables are displayed with the corresponding designation in *Variable Mapping*.

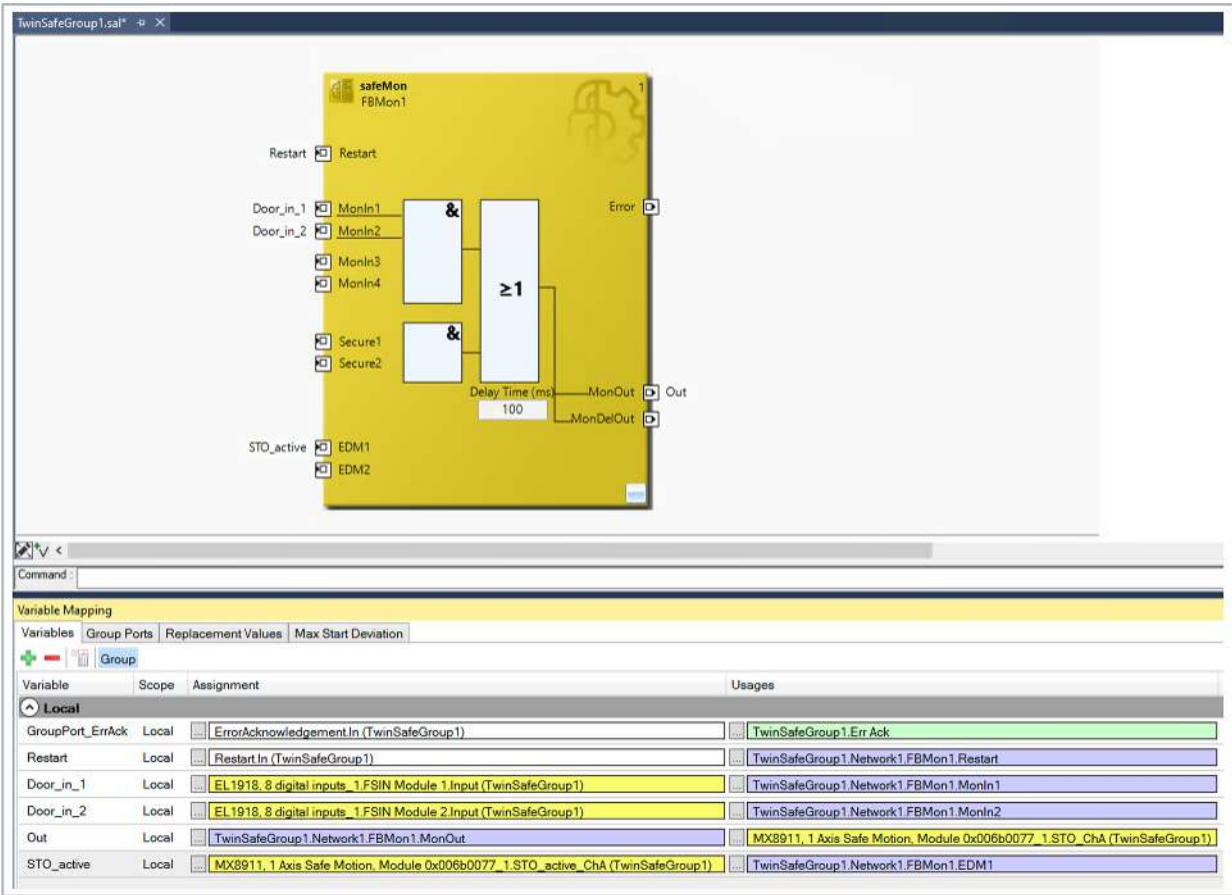


Fig. 5: Variable Mapping

6.3 Use of the MX8911 with a safety-related user program

To use your TwinSAFE drive option card with a safety-oriented user program, you must make certain settings for the target system and the inputs and outputs.

Target system

For the use of the user-specific functions in the MX8911, a safety project is created in TwinCAT 3 and the MX8911 or the axis module is selected as the target system. Proceed as follows:

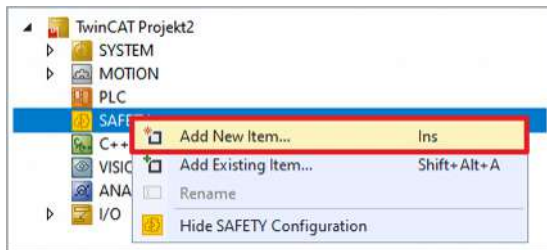


Fig. 6: Add new item

1. Right click on the Safety configuration
2. Click on "Add New Item..."

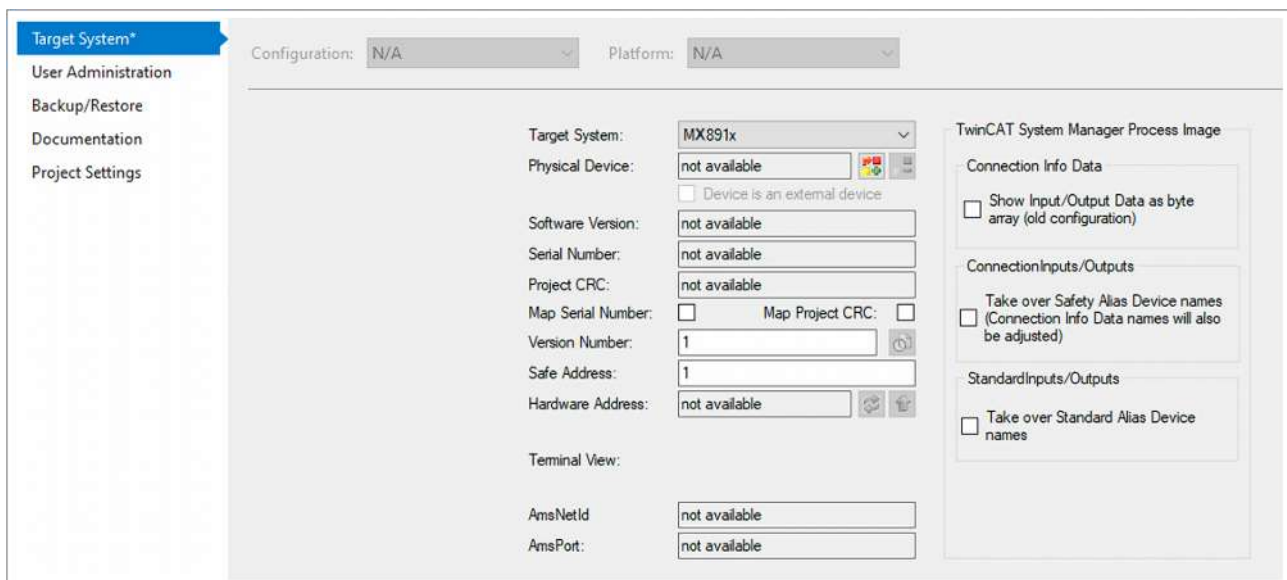



Fig. 7: Target system MX8911

3. Double click on the newly added node
4. Open "Target System" tab to select the target system
5. Select "MX891x" in the drop-down list of the target system
6. Click on  to link the TwinSAFE drive option card to the axis module

Proceed as follows to use the local inputs and outputs of the TwinSAFE drive option card:

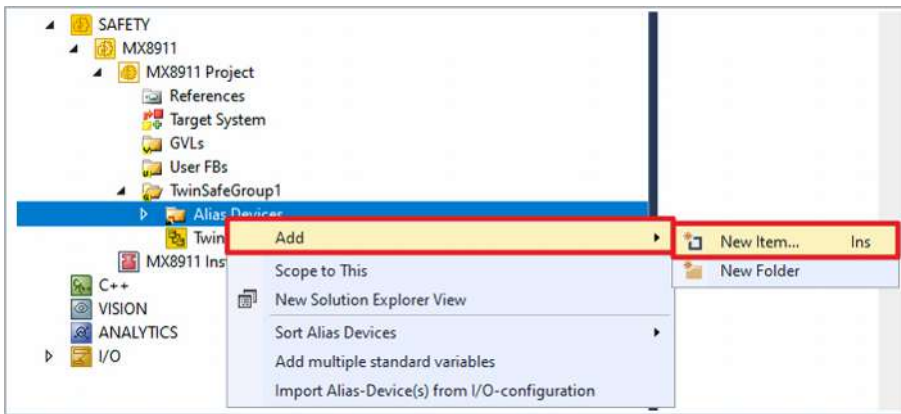


Fig. 8: Add alias device

7. Right-click on the Alias Device folder of the Safety project
8. Select "New Item..." via the "Add" field

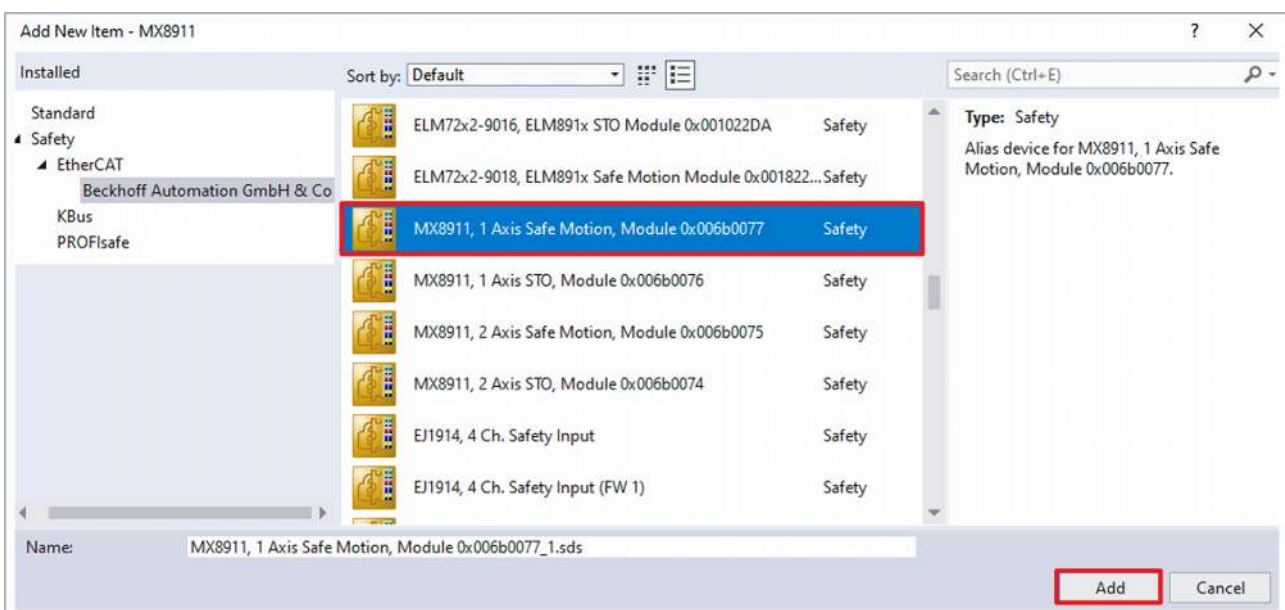


Fig. 9: MX8911 - Add new item

The "Add New Item" window opens. Here you can select your desired MX8911 variant. The name and the ModuleIdent in the alias device description tell you which MX8911 variant it is.

Which ModuleIdent belongs to which firmware version and which MX firmware is supported can be found in the chapter .

9. For the Safe Motion variant, select "MX8911, 1 Axis Safe Motion" or "MX8911, 2 Axis Safe Motion"
10. For the STO variant, select "MX8911, 1 Axis STO" or "MX8911, 2 Axis STO"
11. Confirm the selection with "Add"

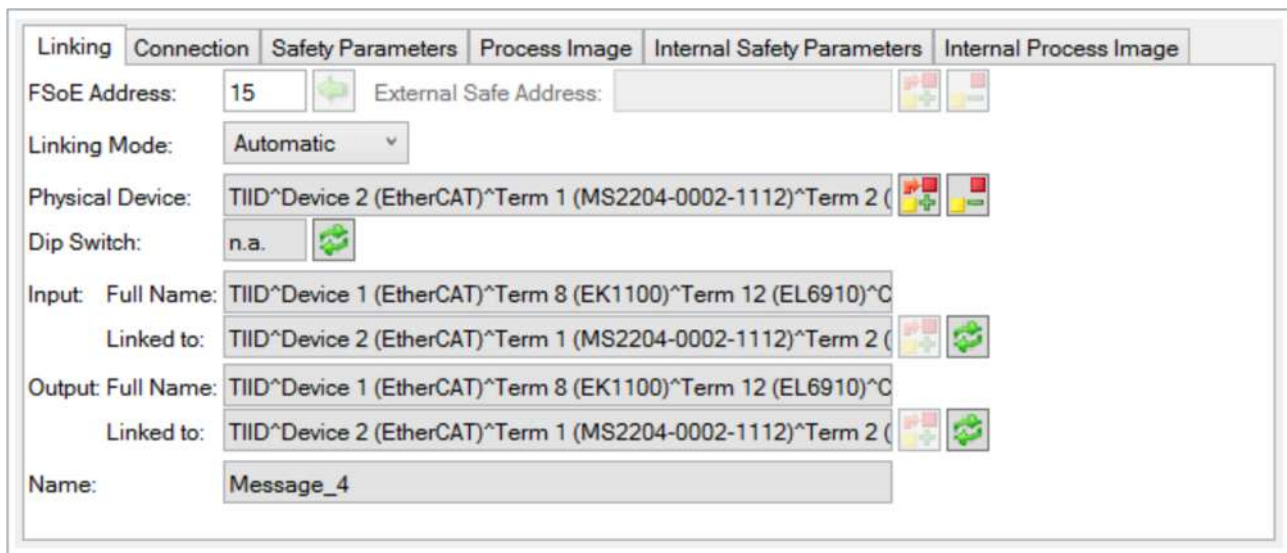


Fig. 10: Linking

12. Double click on the Alias Device
13. Open "Linking" tab
14. Select "Local" from the Linking Mode drop-down menu

After changing the linking mode to "Local", all alias device settings that are not relevant are shown as disabled for input. The other safety parameters can be found in chapter [Safety parameters](#) [► 35].

Safe inputs and outputs within the safety logic

Further information on the process image and the safe and unsafe input and output signals can be found in the chapter [Local process image](#) [► 36].

6.4 Manual creation of safety functions

The creation of a safety-oriented user program is explained in the documentation for the EL6910 and the FB description. The corresponding documents are numbers [3] and [4] at [References](#) [► 6].

6.5 Address setting

Figures

The address setting for the TwinSAFE Drive option card is explained using figures for the Safe Motion variant. The procedure is the same for the STO variant.

User name and password

Some actions, such as the address setting, must be confirmed by entering the user name and password. The default user name is *Administrator*, the default password is *TwinSAFE*.

When commissioning the TwinSAFE component for the first time, change the default password to a customer-specific password. The password must be at least 6 characters long.

In this chapter you will learn how to change the address of your TwinSAFE component in TwinCAT. This is done by downloading the safe address. Proceed as follows:

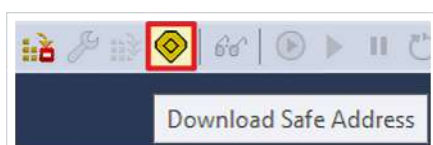


Fig. 11: Download Safe Address

1. Click on "Download Safe Address" in the menu bar

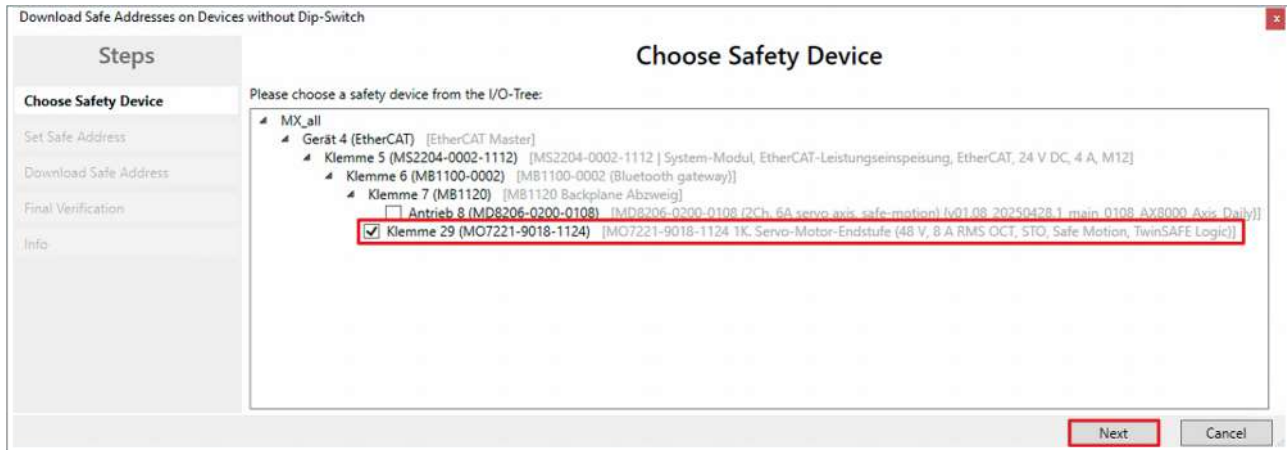


Fig. 12: Choose Safety Device

2. Select the TwinSAFE component in the "Choose Safety Device" window
3. Confirm the selection with "Next"

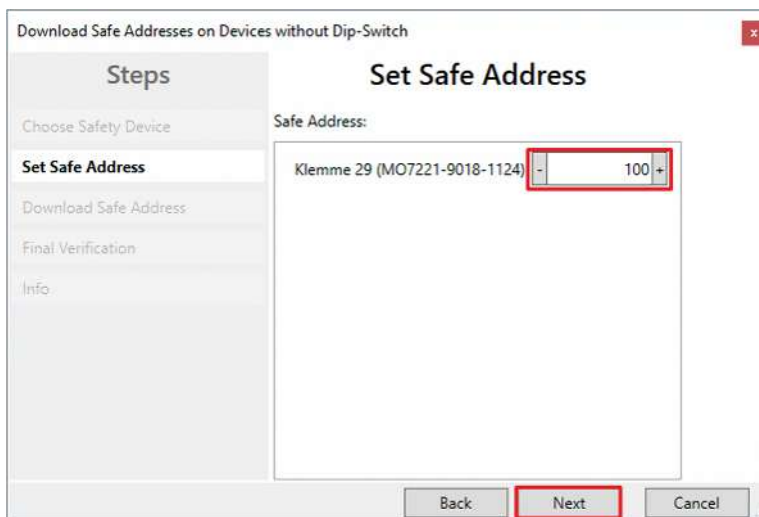


Fig. 13: Set Safe Address

The "Set Safe Address" window opens.

4. Enter desired address
5. Confirm the entry with "Next"

Download Safe Addresses on Devices without Dip-Switch

Steps

- Choose Safety Device
- Set Safe Address
- Download Safe Address**
- Final Verification
- Info

Download Safe Address

Username: Administrator

Password:

Please verify the safety device data:

Verified	FSoE-Address	Physical Device	Serial Number	Project CRC	AmsNetId	AmsPort
<input checked="" type="checkbox"/>	100	Klemme 29 (MO72...	0	0x94A2	172.22.231.8.5.1	1011

Back Next Cancel

Fig. 14: Download Safe Address

6. Enter the username and password in the "Download Safe Address" window

Default username: Administrator

Default password: TwinSAFE

7. Select the TwinSAFE component for which you want to load a new address
8. Confirm the selection with "Next"

Download Safe Addresses on Devices without Dip-Switch

Steps

- Choose Safety Device
- Set Safe Address
- Download Safe Address
- Final Verification**
- Info

Final Verification

Target System	Online Safe Address	Offline Safe Address	Verification Result
Name: Klemme 29 (MO7221-9018-1124) Serial Number: 0	100	100	

Next Cancel

Fig. 15: Final Verification

The "Final Verification" window summarizes the change in a table and provides feedback on whether the change has been verified.

9. Confirm window with "Next"



Fig. 16: Info

The Info window provides the final information you need to change your address.

10. Close the window with "Finish".

11. Restart the TwinSAFE component.

After restarting your TwinSAFE component, the download of the safe address is complete.

6.6 Safety parameters

WARNING

No safe brake control

The safety parameters include parameters for brake control. These parameters are ineffective because the STO variant does not support brake control.

To use brake control, you need the MX8911 with Safe Motion functions.

Do not use these parameters.

6.6.1 Single-axis variant

Index	Name	Data type	Description
0xC110:0	Ch A FSOUT BRAKE Settings Common		
0xC110:1	ModuloDiagTestPulse	UINT8	Not available.
0xC110:2	MultiplierDiagTestPulse	UINT8	Not available.
0xC110:4	Diag TestPulse active	BOOL	Not available.
0xC130:0	Ch A FSDRIVE Settings		
0xC130:1	Brake Control Enabled	BOOL	Not available.

6.6.2 Double-axis variant

Index	Name	Data type	Description
C390:0	ChB FSOUT BRAKE Settings Common		
C390:01	ModuloDiagTestPulse	UINT8	Not available.
C390:02	MultiplierDiagTestPulse	UINT8	Not available.
C390:04	Diag TestPulse active	BOOL	Not available.
C3B0:0	Ch B FSDRIVE Settings		
C3B0:01	Brake Control Enabled	BOOL	Not available.

7 Local process image

The process image of the MX8911 is composed of the input process image and the output process image. The following local process image is available for your customer-specific safety application.

⚠ WARNING

Use non-safe signals only functionally

For each signal in the process image, the column "Group" indicates whether it is a safety-related or a standard signal. Non-safe signals must not be used for safety-related evaluation or shutdown without additional measures.

7.1 Input

The local process image of the input signals consists of a maximum of 512 bytes of data.

7.1.1 Single-axis variant

Offset	Name	Data type	Group	Description
0.0	ChA_STO_Error	BOOL	Safety	True: Error detected in switch-off paths STO of axis A False: No error (link to output signal 6.1)
0.1	ChA_STO_State	BOOL	Standard	True: Axis A enabled False: No error
0.4	ChA_Brake_Error	BOOL	Safety	Not available.
0.5	ChA_DriveReq_Activate_Brake	BOOL	Standard	Not available.
2.0	ChA_EncoderVoltage_Underrange	BOOL	Standard	Not available.
2.1	ChA_EncoderVoltage_Overrange	BOOL	Standard	Not available.
2.2	ChA_EncoderVoltage_Error	BOOL	Standard	Not available.
2.3	ChA_DriveReq_Activate_Encoder	BOOL	Standard	Not available.
4.0 - 5.7	ChA_EncoderVoltage	UINT16	Standard	Not available.
14.0 - 15.7	ChA_ElectricalAngle	UINT16	Standard	Electrical angle (2π per pole)
16.0 - 19.7	ChA_Current_Iq	INT32	Standard	Analog value of current I_q , torque-forming current
20.0 - 23.7	ChA_Current_Id	INT32	Standard	Analog value of current I_d , field-forming current
26.0	ChA_DriveReq_Run	BOOL	Standard	Run signal of the drive control word
26.1	ChA_DriveReq_ErrAck	BOOL	Standard	Error acknowledge signal of the drive control word

7.1.2 Double-axis variant



Process image with double-axis application

For a double-axis application, the following process image applies in addition to the process image in chapter [Single-axis variant](#) [► 36].

Offset	Name	Data type	Group	Description
0.2	ChB_STO_Error	BOOL	Safety	True: Error detected in switch-off paths STO of axis B False: No error (link to output signal 10.1)
0.3	ChB_STO_State	BOOL	Standard	True: Axis B enabled False: No error
0.6	ChB_Brake_Error	BOOL	Safety	Not available.
0.7	ChB_DriveReq_Activate_Brake	BOOL	Standard	Not available.
28.0	ChB_EncoderVoltage_Underrange	BOOL	Standard	Not available.
28.1	ChB_EncoderVoltage_Overrange	BOOL	Standard	Not available.
28.2	ChB_EncoderVoltage_Error	BOOL	Standard	Not available.
28.3	ChB_DriveReq_Activate_Encoder	BOOL	Standard	Not available.
30.0 - 31.7	ChB_EncoderVoltage	UINT16	Standard	Not available.
36.0 - 37.7	ChB_ElectricalAngle	UINT16	Standard	Electrical angle (2π per pole)
38.0 - 41.7	ChB_Current_Iq	INT32	Standard	Analog value of current I_q , torque-forming current
42.0 - 45.7	ChB_Current_Id	INT32	Standard	Analog value of current I_d , field-forming current
48.0	ChB_DriveReq_Run	BOOL	Standard	Run signal of the drive control word
48.1	ChB_DriveReq_ErrAck	BOOL	Standard	Error acknowledge signal of the drive control word

7.2 Output

The local process image of the output signals consists of a maximum of 32 bytes of data.

7.2.1 Single-axis variant

Offset	Name	Data type	Group	Description
0.0	ChA_STO_1	BOOL	Safety	True: Enable switch-off path 1 (STO axis A) False: Disable switch-off path 1 (STO axis A)
0.1	ChA_STO_2	BOOL	Safety	True: Enable switch-off path 2 (STO axis A) False: Disable switch-off path 2 (STO axis A)
0.2	ChA_STO_ErrAck	BOOL	Standard	Acknowledgement of an error in the switch-off paths of axis A
0.3	ChA_no_STO_to_Drive	BOOL	Standard	True: Enable to drive: output stage is enabled for drive (axis A) False: output stage is disabled for drive.
1.0	ChA_Brake_Release	BOOL	Safety	Not available.
1.1	ChA_Brake_ErrAck	BOOL	Standard	Not available.
2.0	ChA_EncoderVoltage_ErrAck	BOOL	Standard	Not available.
4.0	ChA_DriveCmd_GroupError	BOOL	Standard	Drive status: Group error on axis A
6.0	ChA_DriveCmd_Emergency_Stop	BOOL	Standard	reserved
6.1	ChA_DriveCmd_2	BOOL	Standard	reserved

Offset	Name	Data type	Group	Description
6.2	ChA_DriveCmd_3	BOOL	Standard	reserved
6.3	ChA_DriveCmd_4	BOOL	Standard	reserved
6.4	ChA_DriveCmd_5	BOOL	Standard	reserved
6.5	ChA_DriveCmd_6	BOOL	Standard	reserved
6.6	ChA_DriveCmd_7	BOOL	Standard	reserved
6.7	ChA_DriveCmd_8	BOOL	Standard	reserved
8.0	ChA_DiagMessage_1	BOOL	Safety	On falling edge, Diag message 0xD300 is entered in the Diag history.
8.1	ChA_DiagMessage_2	BOOL	Safety	On falling edge, Diag message 0xD301 is entered in the Diag history.
8.2	ChA_DiagMessage_3	BOOL	Safety	On falling edge, Diag message 0xD302 is entered in the Diag history.
8.3	ChA_DiagMessage_4	BOOL	Safety	On falling edge, Diag message 0xD303 is entered in the Diag history.
8.4	ChA_DiagMessage_5	BOOL	Safety	On falling edge, Diag message 0xD304 is entered in the Diag history.
8.5	ChA_DiagMessage_6	BOOL	Safety	On falling edge, Diag message 0xD305 is entered in the Diag history.
8.6	ChA_DiagMessage_7	BOOL	Safety	On falling edge, Diag message 0xD306 is entered in the Diag history.
8.7	ChA_DiagMessage_8	BOOL	Safety	On falling edge, Diag message 0xD307 is entered in the Diag history.
9.0	ChA_DiagMessage_9	BOOL	Safety	On falling edge, Diag message 0xD308 is entered in the Diag history.
9.1	ChA_DiagMessage_10	BOOL	Safety	On falling edge, Diag message 0xD309 is entered in the Diag history.
9.2	ChA_DiagMessage_11	BOOL	Safety	On falling edge, Diag message 0xD30A is entered in the Diag history.
9.3	ChA_DiagMessage_12	BOOL	Safety	On falling edge, Diag message 0xD30B is entered in the Diag history.
9.4	ChA_DiagMessage_13	BOOL	Safety	On falling edge, Diag message 0xD30C is entered in the Diag history.
9.5	ChA_DiagMessage_14	BOOL	Safety	On falling edge, Diag message 0xD30D is entered in the Diag history.
9.6	ChA_DiagMessage_15	BOOL	Safety	On falling edge, Diag message 0xD30E is entered in the Diag history.
9.7	ChA_DiagMessage_16	BOOL	Safety	On falling edge, Diag message 0xD30F is entered in the Diag history.

7.2.2 Double-axis variant



Process image with double-axis application

For a double-axis application, the following process image applies in addition to the process image in chapter [Single-axis variant](#) [► 37].

Offset	Name	Data type	Group	Description
0.4	ChB_STO_1	BOOL	Safety	True: Enable switch-off path 1 (STO axis B) False: Disable switch-off path 1 (STO axis B)
0.5	ChB_STO_2	BOOL	Safety	True: Enable switch-off path 2 (STO axis B) False: Disable switch-off path 2 (STO axis B)

Offset	Name	Data type	Group	Description
0.6	ChB_STO_ErrAck	BOOL	Standard	Acknowledgement of an error in the switch-off paths of axis B
0.7	ChB_no_STO_to_Drive	BOOL	Standard	True: Enable to drive: output stage is enabled for drive (axis B) False: output stage is disabled for drive. (1=Port to Drive Application is 0 (no STO))
1.2	ChB_Brake_Release	BOOL	Safety	Not available.
1.3	ChB_Brake_ErrAck	BOOL	Standard	Not available.
10.0	ChB_EncoderVoltage_ErrAck	BOOL	Standard	Not available.
12.0	ChB_DriveCmd_GroupError	BOOL	Standard	Drive status: Group error on axis B
14.0	ChB_DriveCmd_Emergency_Stop	BOOL	Standard	reserved
14.1	ChB_DriveCmd_2	BOOL	Standard	reserved
14.2	ChB_DriveCmd_3	BOOL	Standard	reserved
14.3	ChB_DriveCmd_4	BOOL	Standard	reserved
14.4	ChB_DriveCmd_5	BOOL	Standard	reserved
14.5	ChB_DriveCmd_6	BOOL	Standard	reserved
14.6	ChB_DriveCmd_7	BOOL	Standard	reserved
14.7	ChB_DriveCmd_8	BOOL	Standard	reserved
16.0	ChB_DiagMessage_1	BOOL	Safety	On falling edge, Diag message 0xD310 is entered in the Diag history.
16.1	ChB_DiagMessage_2	BOOL	Safety	On falling edge, Diag message 0xD311 is entered in the Diag history.
16.2	ChB_DiagMessage_3	BOOL	Safety	On falling edge, Diag message 0xD312 is entered in the Diag history.
16.3	ChB_DiagMessage_4	BOOL	Safety	On falling edge, Diag message 0xD313 is entered in the Diag history.
16.4	ChB_DiagMessage_5	BOOL	Safety	On falling edge, Diag message 0xD314 is entered in the Diag history.
16.5	ChB_DiagMessage_6	BOOL	Safety	On falling edge, Diag message 0xD315 is entered in the Diag history.
16.6	ChB_DiagMessage_7	BOOL	Safety	On falling edge, Diag message 0xD316 is entered in the Diag history.
16.7	ChB_DiagMessage_8	BOOL	Safety	On falling edge, Diag message 0xD317 is entered in the Diag history.
17.0	ChB_DiagMessage_9	BOOL	Safety	On falling edge, Diag message 0xD318 is entered in the Diag history.
17.1	ChB_DiagMessage_10	BOOL	Safety	On falling edge, Diag message 0xD319 is entered in the Diag history.
17.2	ChB_DiagMessage_11	BOOL	Safety	On falling edge, Diag message 0xD31A is entered in the Diag history.
17.3	ChB_DiagMessage_12	BOOL	Safety	On falling edge, Diag message 0xD31B is entered in the Diag history.
17.4	ChB_DiagMessage_13	BOOL	Safety	On falling edge, Diag message 0xD31C is entered in the Diag history.
17.5	ChB_DiagMessage_14	BOOL	Safety	On falling edge, Diag message 0xD31D is entered in the Diag history.
17.6	ChB_DiagMessage_15	BOOL	Safety	On falling edge, Diag message 0xD31E is entered in the Diag history.
17.7	ChB_DiagMessage_16	BOOL	Safety	On falling edge, Diag message 0xD31F is entered in the Diag history.

8 Appendix

8.1 Volatility

If there are requirements concerning the volatility of products in your application, for example of the U.S. Department of Defense or similar authorities or security organizations, the following process applies:

The product has both volatile and non-volatile components. Volatile components lose their data immediately after removing power. Non-volatile components keep the data even after loss of power.

If there is customer specific data saved on the product, it cannot be ensured that this data might not be restored through for example forensic measures, even after the data is deleted through the provided tool chain. If this data is confidential, the scrapping of the product after usage is recommended to protect this data.

8.2 Focus of certificates

The most decisive document for certified components of the TwinSAFE department is the EC type examination certificate. The document contains both the test coverage and the regarded component and component family.

The current certificates of all TwinSAFE components with the underlying standards and directives can be found at <https://www.beckhoff.com/en-en/support/download-finder/certificates-approvals/>.

If the document refers only to the first four figures of a product (ELxxxx), the certificate is valid for all available variants of the component (ELxxxx-abcd). This is applicable for all components like EtherCAT Terminals, EtherCAT Boxes, EtherCAT plug-in modules and Bus Terminals.

CERTIFICADO ◆ CERTIFICADO ◆ СЕРТИФИКАТ ◆ СЕРТИФИКАТ ◆		
	<h1>EC-Type Examination Certificate</h1>	
	No. M6A 062386 0055 Rev. 01	
	Holder of Certificate:	Beckhoff Automation GmbH & Co. KG Hülshorstweg 20 33415 Verl GERMANY
	Product:	Safety components
	Model(s):	EL1918
	Parameters:	Supply voltage: 24VDC (-15%/+20%) Ambient temperature: -25°C...+55°C Protection class: IP20
	<p>This EC Type Examination Certificate is issued according to Article 12(3) b or 12(4) a of Council Directive 2006/42/EC relating to machinery. It confirms that the listed Annex-IV equipment complies with the principal protection requirements of the directive. It refers only to the sample submitted to TÜV SÜD Product Service GmbH for testing and certification. For details see: www.tuvsud.com/ps-cert</p>	
	Test report no.:	BV99670C

If you regard the example EL1918 in the picture, the certificate is valid for both the EL1918 and the available variant EL1918-2200.

Trademark statements

Beckhoff®, ATRO®, EtherCAT®, EtherCAT G®, EtherCAT G10®, EtherCAT P®, MX-System®, Safety over EtherCAT®, TC/BSD®, TwinCAT®, TwinCAT/BSD®, TwinSAFE®, XFC®, XPlanar® and XTS® are registered and licensed trademarks of Beckhoff Automation GmbH.

More Information:
www.beckhoff.com/MX-System

Beckhoff Automation GmbH & Co. KG
Hülshorstweg 20
33415 Verl
Germany
Phone: +49 5246 9630
info@beckhoff.com
www.beckhoff.com

