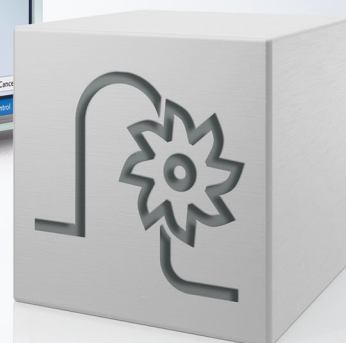
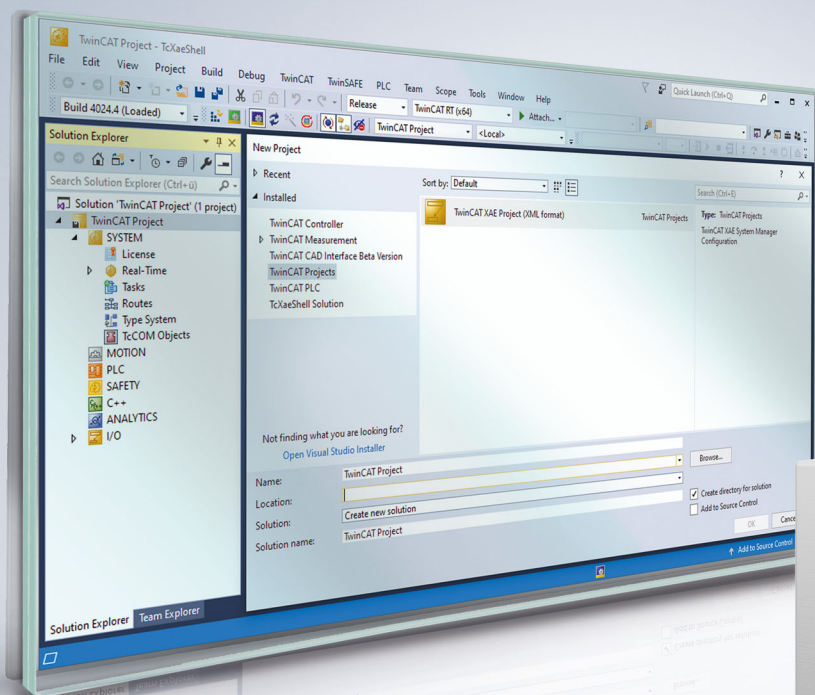


Functional description | EN

## TF5200 | TwinCAT 3 CNC

Velocity smoothing





# Notes on the documentation

This description is only intended for the use of trained specialists in control and automation engineering who are familiar with the applicable national standards.

It is essential that the documentation and the following notes and explanations are followed when installing and commissioning the components.

It is the duty of the technical personnel to use the documentation published at the respective time of each installation and commissioning.

The responsible staff must ensure that the application or use of the products described satisfy all the requirements for safety, including all the relevant laws, regulations, guidelines and standards.

## Disclaimer

The documentation has been prepared with care. The products described are, however, constantly under development.

We reserve the right to revise and change the documentation at any time and without prior announcement.

No claims for the modification of products that have already been supplied may be made on the basis of the data, diagrams and descriptions in this documentation.

## Trademarks

Beckhoff®, TwinCAT®, TwinCAT/BSD®, TC/BSD®, EtherCAT®, EtherCAT G®, EtherCAT G10®, EtherCAT P®, Safety over EtherCAT®, TwinSAFE®, XFC®, XTS® and XPlanar® are registered trademarks of and licensed by Beckhoff Automation GmbH.

Other designations used in this publication may be trademarks whose use by third parties for their own purposes could violate the rights of the owners.

## Patent Pending

The EtherCAT technology is patent protected, in particular by the following applications and patents:

EP1590927, EP1789857, EP1456722, EP2137893, DE102015105702

with corresponding applications or registrations in various other countries.



EtherCAT® is registered trademark and patented technology, licensed by Beckhoff Automation GmbH, Germany

## Copyright

© Beckhoff Automation GmbH & Co. KG, Germany.

The reproduction, distribution and utilisation of this document as well as the communication of its contents to others without express authorisation are prohibited.

Offenders will be held liable for the payment of damages. All rights reserved in the event of the grant of a patent, utility model or design.

# General and safety instructions

## Icons used and their meanings

This documentation uses the following icons next to the safety instruction and the associated text. Please read the (safety) instructions carefully and comply with them at all times.

### Icons in explanatory text

1. Indicates an action.

⇒ Indicates an action statement.

#### **DANGER**

##### **Acute danger to life!**

If you fail to comply with the safety instruction next to this icon, there is immediate danger to human life and health.

#### **CAUTION**

##### **Personal injury and damage to machines!**

If you fail to comply with the safety instruction next to this icon, it may result in personal injury or damage to machines.

#### **NOTICE**

##### **Restriction or error**

This icon describes restrictions or warns of errors.

#### **Tips and other notes**



This icon indicates information to assist in general understanding or to provide additional information.

### General example

Example that clarifies the text.

### NC programming example

Programming example (complete NC program or program sequence) of the described function or NC command.

#### **Specific version information**



Optional or restricted function. The availability of this function depends on the configuration and the scope of the version.

# Contents

Notes on the documentation..... 3

General and safety instructions ..... 4

1 Overview ..... 8

2 Description ..... 9

2.1 Productivity factor..... 10

3 Programming ..... 12

4 Parameter..... 14

4.1 Overview ..... 14

4.2 Description of parameters ..... 14

4.3 CNC objects ..... 16

5 Support and Service ..... 17



## List of figures

Fig. 1	Effect of different productivity factors in velocity-path representation .....	11
Fig. 2	Resulting velocity curve of the above programming example.....	13

# 1 Overview

## Task

The aim of this functionality is to reduce machine oscillations caused by frequent program-related acceleration and deceleration processes. The functionality smooths the planned path velocity curve while taking a predefined criterion into consideration.

## Effectiveness

Smoothing the path velocity curve or reducing acceleration and deceleration processes is achieved by cross-block adjustment of the planned maximum path velocities. The maximum path velocities are adjusted by reducing them, which can result in a longer machining time.

Specifying the smoothing criterion (productivity factor) defines

- the degree of smoothing as well as
- the maximum machining time that is tolerable.



---

**This functionality is available as of CNC Build V3.01.3079.21.**

---

## Parameterisation

In order to use this functionality, it must be enabled by the parameter [P-CHAN-00600](#) [[▶ 14](#)].

## Programming

The functionality is parameterised by the [NC command #LAH\[...\]](#) [[▶ 12](#)].

## ***Mandatory note on references to other documents***

For the sake of clarity, links to other documents and parameters are abbreviated, e.g. [PROG] for the Programming Manual or P-AXIS-00001 for an axis parameter.

For technical reasons, these links only function in the Online Help (HTML5, CHM) but not in pdf files since pdfs do not support cross-linking.



## 2 Description

Depending on the NC program used, many successive acceleration and deceleration processes are possible during machining. This leads to an unsettled velocity curve, to oscillations and therefore to greater stress on the machine.

The aim of the velocity smoothing functionality is to counteract this.

The aims in detail:

- avoids unnecessary acceleration and deceleration processes
- achieves smoother running of the machining
- reduces machine oscillations
- reduces stress on the machine

### Requirement

The functionality must be enabled by the channel parameter P-CHAN-00600.

```
configuration.path_preparation.function FCT_DEFAULT | FCT_VSM
```

### Operation mode of velocity smoothing

The velocity smoothing function considers cross-block motion blocks and reduces the maximum path velocities to a local minimum, if necessary, by adjusting them. The function acts exclusively on the maximum permissible path velocity of each block and therefore on the transition velocity of the motion blocks.

Velocity smoothing gives preference to blocks where a reduced increase in machining time is achieved by decreasing path velocity instead of reducing blocks with a longer machining time.

The smoothing effect of the function is negligible with NC programs that have many block transition velocities close to or equal to 0.

---

**i** Smoothing the path velocity curve also means a longer machining time.

---

### Properties of velocity smoothing

- Velocity smoothing is a cross-block function.
- The maximum reduction in path velocity is dependent on the productivity factor and the minimum actual maximum velocity of a block in the range under review.
- The symmetrical operation mode of the smoothed path velocity curve with forward and backward motion is largely identical.
- Velocity smoothing has a slowing effect on block supply due to the buffering of block supply. A possible solution to this is to give a higher priority to the SDA task.

## 2.1 Productivity factor

The user can use the productivity factor to control the effect of velocity smoothing. The productivity factor controls two variables:

- the degree of smoothing
- limiting productivity losses

Determining the productivity factor:

$$\text{Productivity factor}[\%] = \frac{\text{Processing time without velocity smoothing}}{\text{Processing time with velocity smoothing}} * 100$$

Reducing the maximum path velocity by smoothing results in a longer machining time. This is due to the following factors:

$$\text{Processing time extension} [\%] = \frac{\text{Processing time with velocity smoothing}}{\text{Processing time without velocity smoothing}} * 100$$

The maximum expected increase in machining time (as a percentage) for the given productivity factor can also be determined as follows:

$$\text{Processing time extension} [\%] = \frac{1}{\text{Productivity}[\%]} * 100$$



**The real productivity factor achieved is always  $\geq$  the specified productivity factor.**

### Example of calculating the productivity factor

Productivity factor = 90(%) means that the smoothed curve has a minimum of 90% of the original productivity. This means that the maximum increase in machining time in % is  $1/0.9 \times 100 = 111.11\%$ . The NC program then requires a maximum of 11.11% more machining time than originally programmed.

The figures below show the effect on the velocity curve with and without various productivity factors using the example of an HSC program.

Blue = Permissible maximum path velocity using the CNC object "Maximum velocity on path [► 16]".

Red = Path velocity using the CNC object "Current velocity on path [► 16]".

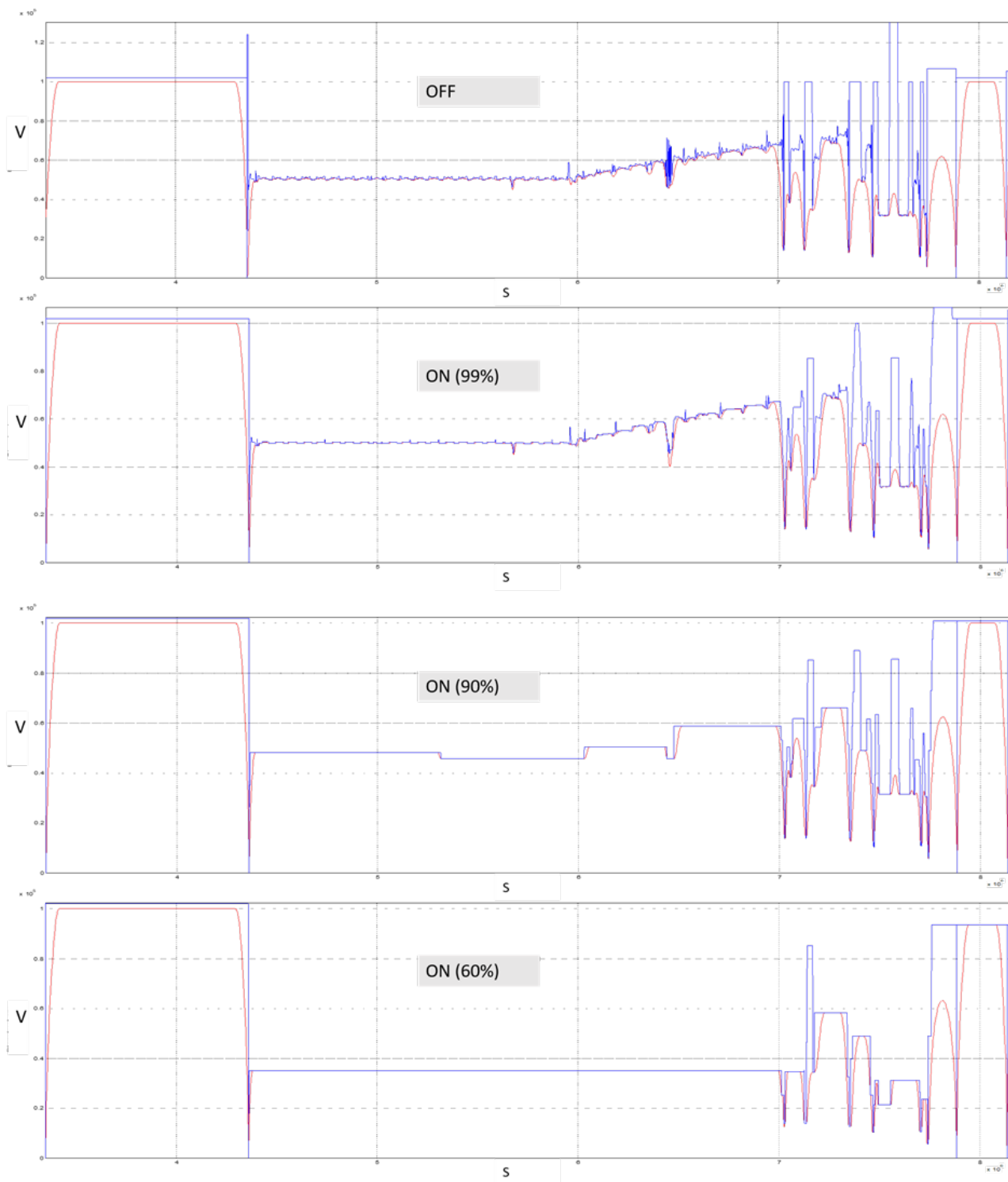


Fig. 1: Effect of different productivity factors in velocity-path representation



If a productivity factor of 100 (%) is specified, the curve of the maximum blockwise path velocities will also be always adjusted or changed as well. However, this should have no influence on productivity as defined by the default of 100%.

### 3 Programming

Velocity smoothing in the NC program is programmed using the #LAH command. This NC command can be used to enable/disable velocity smoothing and to change the parameters when the NC program is active.

Syntax:

**#LAH [SMOOTH\_PATH\_VEL =.. PROD\_FACT =.. ]** non-modal

SMOOTH_PATH_VEL	Enable/disable velocity smoothing
=..	0: Velocity smoothing not enabled
	1: Velocity smoothing enabled
PROD_FACT=..	Productivity factor in %
	Value range: 0 < productivity factor <= 100%

#### NOTICE

**When you enable velocity smoothing and change the productivity factor, both keywords must always be programmed.**

If one parameter is missing, the error ID 21104 is output.

## Programming example for velocity smoothing

This programming example shows a simple NC program where a linear block sequence is passed through 3 times.

- Pass 1 (S1): without velocity smoothing
- Pass 2 (S2): with velocity smoothing of 90% enabled
- Pass 3 (S3): Velocity smoothing parameters are changed to 50% and then velocity smoothing is disabled.

```
%main
( Pass 1)
N020 G00 G90 X0 Y0 Z0
N030 G01 X1 Y1 F30000
N040 G01 X2 Y0
N050 G01 X0
( Pass 2)
N060 #LAH [SMOOTH_PATH_VEL = 1 PROD_FACT = 90]
N070 G01 X1 Y1
N080 G01 X2 Y0
N090 G01 X0
( Pass 3)
N100 #LAH [SMOOTH_PATH_VEL = 1 PROD_FACT = 50]
N110 G01 X1 Y1
N120 G01 X2 Y0
N130 G01 X0
N140 #LAH [SMOOTH_PATH_VEL = 0] (Deactivation)
N150 G260
N160 M30
```

Blue: maximum permissible path velocity

Red: current path velocity

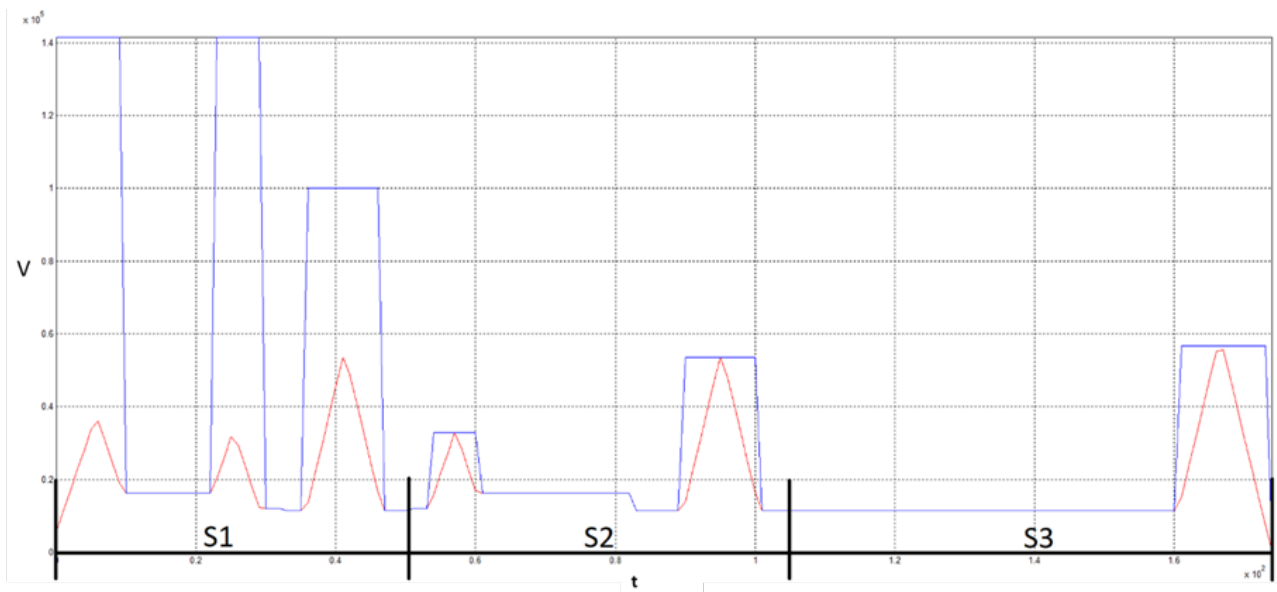


Fig. 2: Resulting velocity curve of the above programming example

## 4 Parameter

### 4.1 Overview

ID	Parameter	Description
<b>P-CHAN-00600</b>	configuration.path_preparation.function	Enable functionalities for path preparation
Alternatively:		
P-STUP-00060	..path_preparation.function	Enable functions in path preparation (Alternative but not recommended).

### 4.2 Description of parameters

#### Channel parameters

<b>P-CHAN-00600</b>	<b>Defining functionalities for path preparation.</b>
Description	This parameter defines the individual functionalities for path preparation. The individual functions can be enabled or disabled for testing or for performance reasons.
Parameter	configuration.path_preparation.function
Data type	STRING
Data range	See <a href="#">Description of parameters [► 15]</a>
Dimension	----
Default value	FCT_DEFAULT
Remarks	Parameter is available as of the following Builds: V2.11.2040.04 ; V2.11.2810.02 ; V3.1.3079.17 ; V3.1.3107.10  Functions can be defined in P-CHAN-00605 and P-CHAN-00606 depending on the machining mode.

#### Start-up parameters

<b>P-STUP-00060</b>	<b>Defining functionalities for path preparation.</b>
Description	This parameter defines the individual functionalities for path preparation. The individual functions can be enabled or disabled for testing or for performance reasons.
Parameter	configuration.channel[i].path_preparation.function
Data type	STRING
Data range	See <a href="#">Description of parameters [► 15]</a>
Dimension	----
Default value	FCT_DEFAULT
Remarks	

Path preparation function table

Identifier	Description
FCT_DEFAULT	The functions FCT_FFM   FCT_PRESEGMENTATION   FCT_SPLINE   FCT_POLY   FCT_CAX   FCT_CAX_TRACK   FCT_SEGMENTATION are available.
FCT_FFM	Free-form surface mode, #HSC [OPMODE 1 CONTRR 0.01], #HSC [OPMODE 2]
FCT_PRESEGMENTATION	Linear pre-segmentation in HSC mode
FCT_SPLINE	#HSC[], AKIMA, B-Spline, G150/G151
FCT_POLY	#CONTOUR MODE[], G61, G261/G260
FCT_CAX	C axis processing, i.e. the spindle is embedded in the NC channel.
FCT_CAX_TRACK	#CAXTRACK, tracking an axis according to the contour angle
FCT_SEGMENTATION	For dynamic segmentation of the path contour, e.g. if the curvature of a polynomial segment varies significantly.

**The following functions must also be enabled:**

FCT_LIFT_UP	Automatic lifting/lowering of an axis (path-based coupling). Example: FCT_DEFAULT   FCT_LIFT_UP
FCT_EMF	Edge machining (sharp angle contours). Example: FCT_DEFAULT   FCT_EMF
FCT_EMF_POLY_OFF	Edge machining inactive with polynomials.  Contrary to the setting with FCT_EMF, edge signal generation is masked when path polynomial generation is active in the channel. Polynomials are generated for smoothing G261 or when B Spline is active. The resulting geometry is then tangential. Example: FCT_DEFAULT   FCT_EMF_POLY_OFF
FCT_SYNC	Synchronise an axis to a path group. Example: FCT_DEFAULT   FCT_SYNC
FCT_PRECON	Optimised planning using #HSC[BSPLINE]. Example: FCT_DEFAULT   FCT_PRECON
FCT_LIFT_UP_TIME	Automatic lifting/lowering of an axis (time-based coupling). Example: FCT_DEFAULT   FCT_LIFT_UP_TIME
FCT_PTP	Dynamically optimised smoothing of the complete contour. Example: FCT_DEFAULT   FCT_PTP
FCT_M_PRE_OUTPUT	Pre-output of M/H functions (microjoints). Example: FCT_DEFAULT   FCT_M_PRE_OUTPUT
FCT_SURFACE	HSC machining with Surface Optimiser Example: FCT_DEFAULT   FCT_SURFACE
FCT_SEG_CHECK	Block segmentation in combination with path-controlled offset of M functions (dwell time), see P-CHAN-00650 and <a href="#">Description of parameters [► 15]</a> Example: FCT_DEFAULT   FCT_SEG_CHECK
FCT_NIBBLING	Activate the nibbling function Example: FCT_DEFAULT   FCT_NIBBLING
FCT_PUNCHING	Activate the punching function Example: FCT_DEFAULT   FCT_PUNCHING
FCT_VSM	Activate the velocity smoothing function Example: FCT_DEFAULT   FCT_VSM as of V3.1.3079.21

### 4.3 CNC objects

<b>Name</b>	Maximum velocity on path			
<b>Description</b>	This object reads the maximum velocity on the path.			
<b>Task</b>	GEO (Port 551)			
<b>Index group</b>	0x12130<C <sub>ID</sub> >	<b>Index offset</b>	0xF	
<b>Data type</b>	UNS32	<b>Length</b>	4	
<b>Attributes</b>	read	<b>Unit</b>	[μm/s]	
<b>Remarks</b>				

<b>Name</b>	Current velocity on path			
<b>Description</b>	This object reads the current velocity on the path.			
<b>Task</b>	GEO (Port 551)			
<b>Index group</b>	0x12130<C <sub>ID</sub> >	<b>Index offset</b>	0x15	
<b>Data type</b>	REAL64	<b>Length</b>	8	
<b>Attributes</b>	read	<b>Unit</b>	[μm/s]	
<b>Remarks</b>				

<b>Name</b>	Maximum velocity on path at block end			
<b>Description</b>	This object reads the maximum velocity on the path at block end.			
<b>Task</b>	GEO (Port 551)			
<b>Index group</b>	0x12130<C <sub>ID</sub> >	<b>Index offset</b>	0x10	
<b>Data type</b>	UNS32	<b>Length</b>	4	
<b>Attributes</b>	read	<b>Unit</b>	[μm/s]	
<b>Remarks</b>				



## 5 Support and Service

Beckhoff and their partners around the world offer comprehensive support and service, making available fast and competent assistance with all questions related to Beckhoff products and system solutions.

### Download finder

Our [download finder](#) contains all the files that we offer you for downloading. You will find application reports, technical documentation, technical drawings, configuration files and much more.

The downloads are available in various formats.

### Beckhoff's branch offices and representatives

Please contact your Beckhoff branch office or representative for [local support and service](#) on Beckhoff products!

The addresses of Beckhoff's branch offices and representatives round the world can be found on our internet page: [www.beckhoff.com](http://www.beckhoff.com)

You will also find further documentation for Beckhoff components there.

### Beckhoff Support

Support offers you comprehensive technical assistance, helping you not only with the application of individual Beckhoff products, but also with other, wide-ranging services:

- support
- design, programming and commissioning of complex automation systems
- and extensive training program for Beckhoff system components

Hotline: +49 5246 963-157  
e-mail: [support@beckhoff.com](mailto:support@beckhoff.com)

### Beckhoff Service

The Beckhoff Service Center supports you in all matters of after-sales service:

- on-site service
- repair service
- spare parts service
- hotline service

Hotline: +49 5246 963-460  
e-mail: [service@beckhoff.com](mailto:service@beckhoff.com)

### Beckhoff Headquarters

Beckhoff Automation GmbH & Co. KG

Huelshorstweg 20  
33415 Verl  
Germany

Phone: +49 5246 963-0  
e-mail: [info@beckhoff.com](mailto:info@beckhoff.com)  
web: [www.beckhoff.com](http://www.beckhoff.com)



More Information:  
[www.beckhoff.com/TF5200](http://www.beckhoff.com/TF5200)

Beckhoff Automation GmbH & Co. KG  
Hülshorstweg 20  
33415 Verl  
Germany  
Phone: +49 5246 9630  
[info@beckhoff.com](mailto:info@beckhoff.com)  
[www.beckhoff.com](http://www.beckhoff.com)

