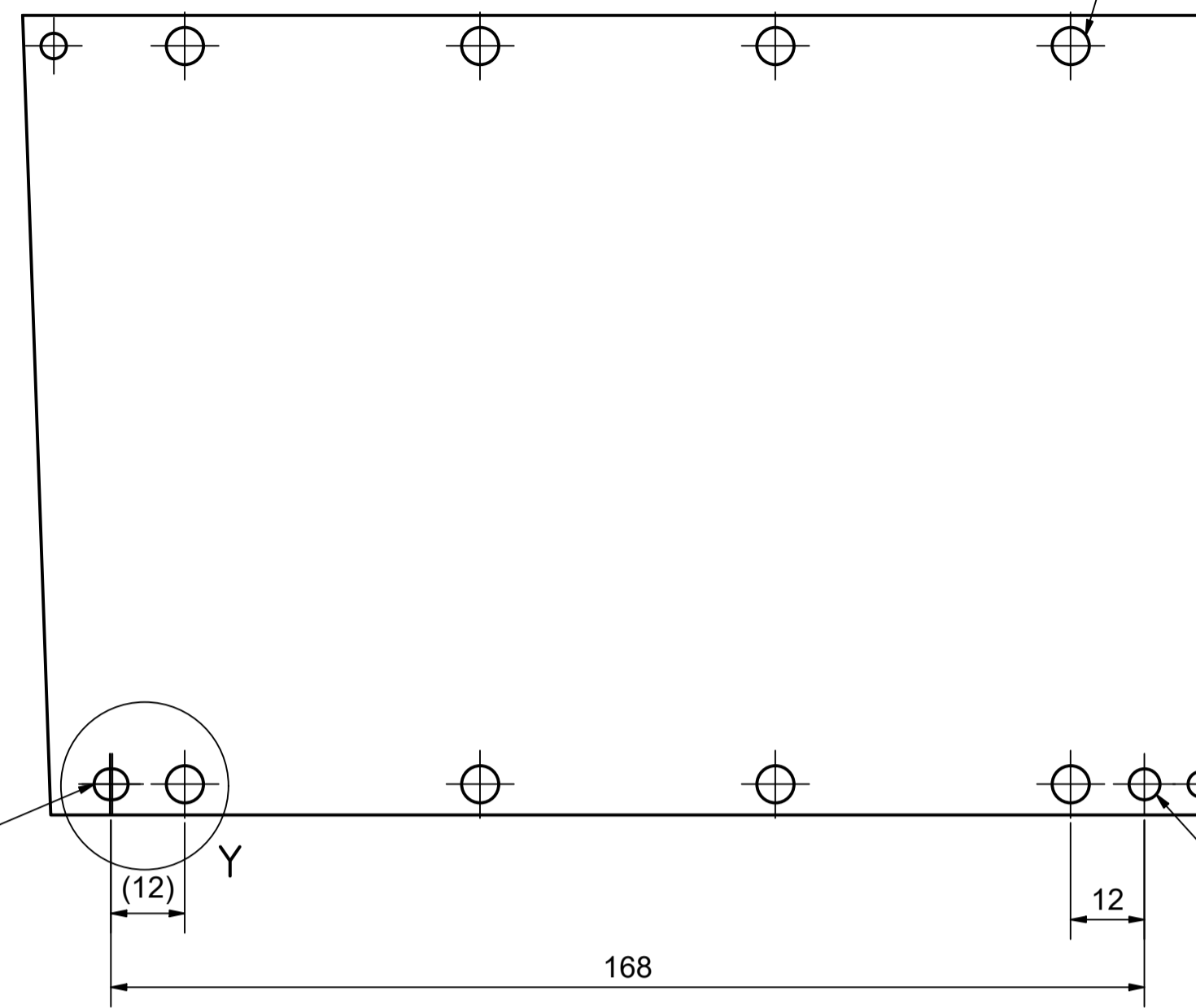


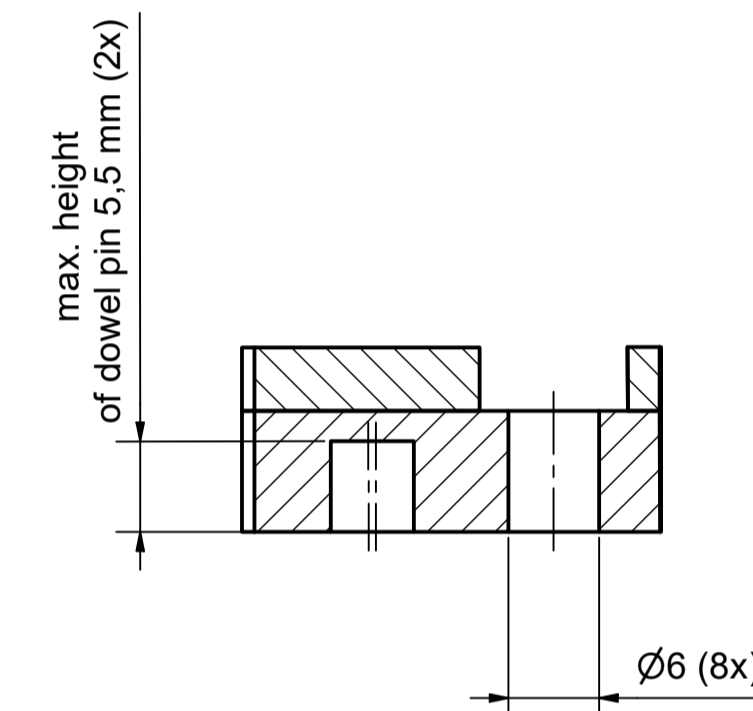
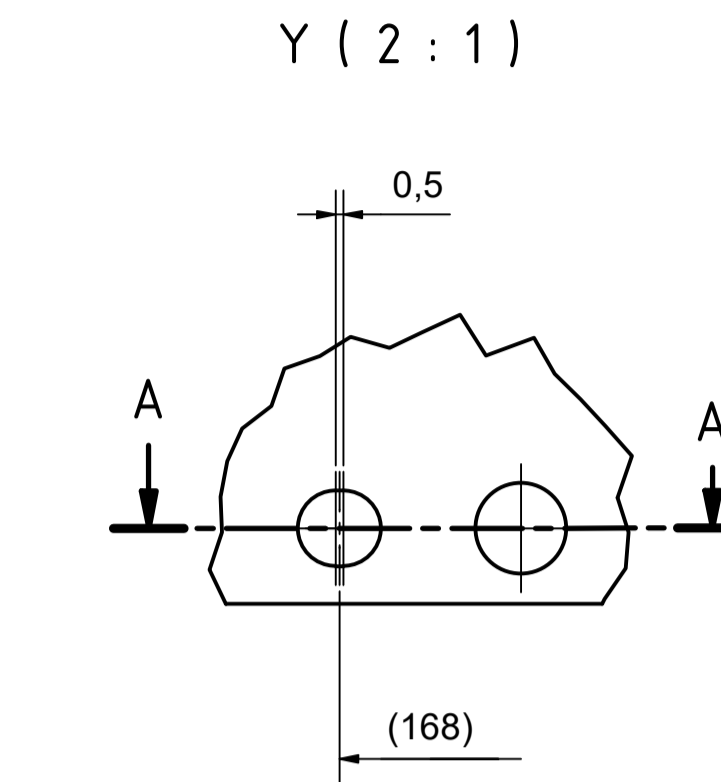
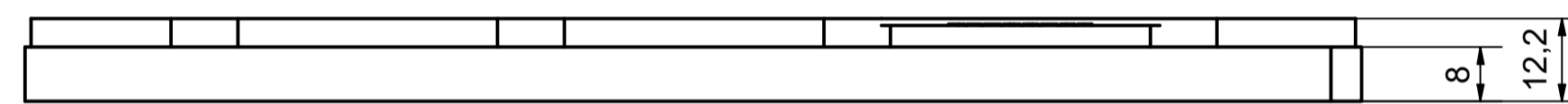
Hole \varnothing 6 mm for Screw M5 DIN 79884 (short head)
 Loch \varnothing 6 mm für eine Schraube M5 DIN79884 (kurzer Kopf)

Hole \varnothing 5 mm (6 mm deep)
 for Dowel \varnothing 5 m6 (optional use)
 Bohrung \varnothing 5 mm (6 mm tief)
 für Passstift \varnothing 5 m6 (optional)

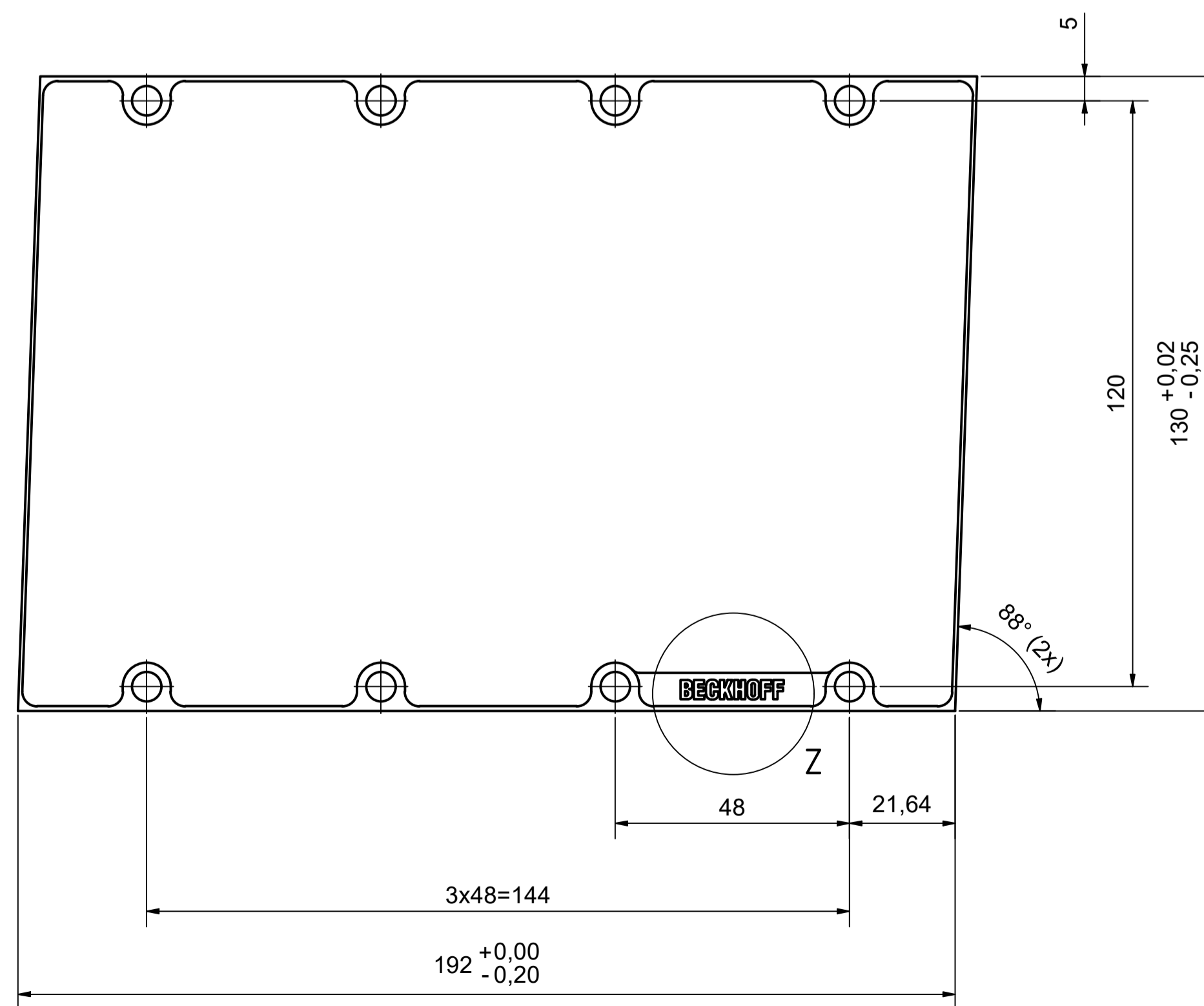
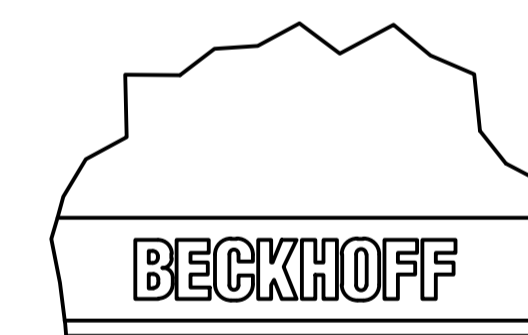
Slotted hole \varnothing 5 mm (6 mm deep)
 for Dowel \varnothing 5 m6 (optional use)
 Langloch \varnothing 5 mm (6 mm tief)
 für Passstift \varnothing 5 m6 (optional)



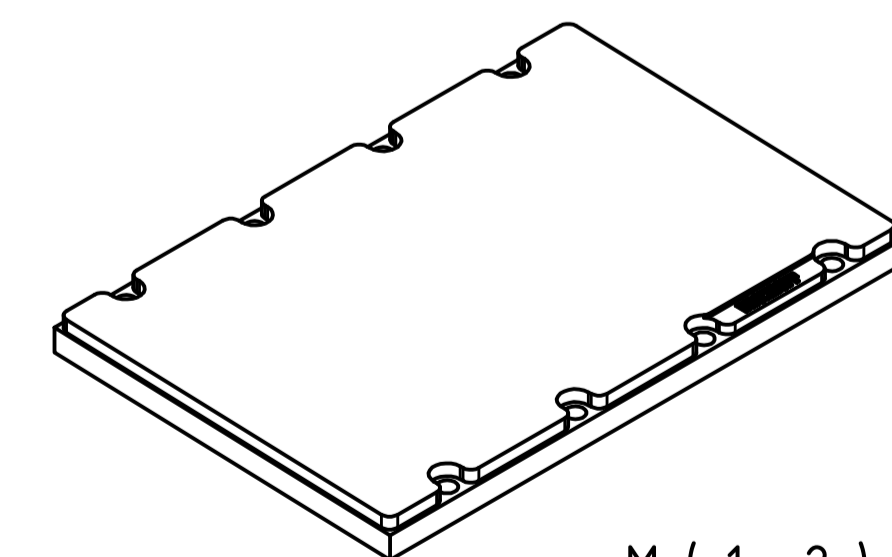
A-A (2 : 1)



Z (2 : 1)



M (1 : 2)



| | | | |
|--|------------------|---|----------------|
| Bezeichnung / description Magnetplatte Magnet plate | | Abteilungskennzeichen / department ID Motion | |
| AL8561-w000-0000 | | Dokumentennummer / document number 5000000105 | |
| ISO 129 dimension | Maßstab scale | Blattgröße sheet size | Blatt sheet |
| mm | 1 : 1 | A1 | 1 / 1 |
| Revision | | Projektbezeichnung project name | |
| B | | Datum date | |
| | | 08.05.2024 | |

Copyright reserved to ISO 15001
 Alle Rechte vorbehalten. Nachdruck, Vervielfältigung und Verbreitung, auch auszugsweise, ist ohne schriftliche Genehmigung der Firma Beckhoff Automation GmbH & Co. KG.
 All rights reserved. No part of this publication may be reproduced, stored in a retrieval system, or transmitted, in any form or by any means, electronic, mechanical, photocopying, recording, or otherwise, without the prior written permission of Beckhoff Automation GmbH & Co. KG.