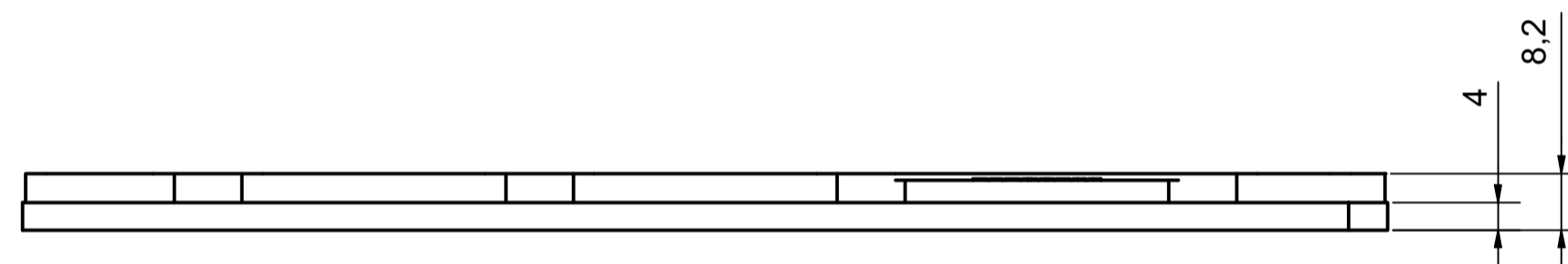
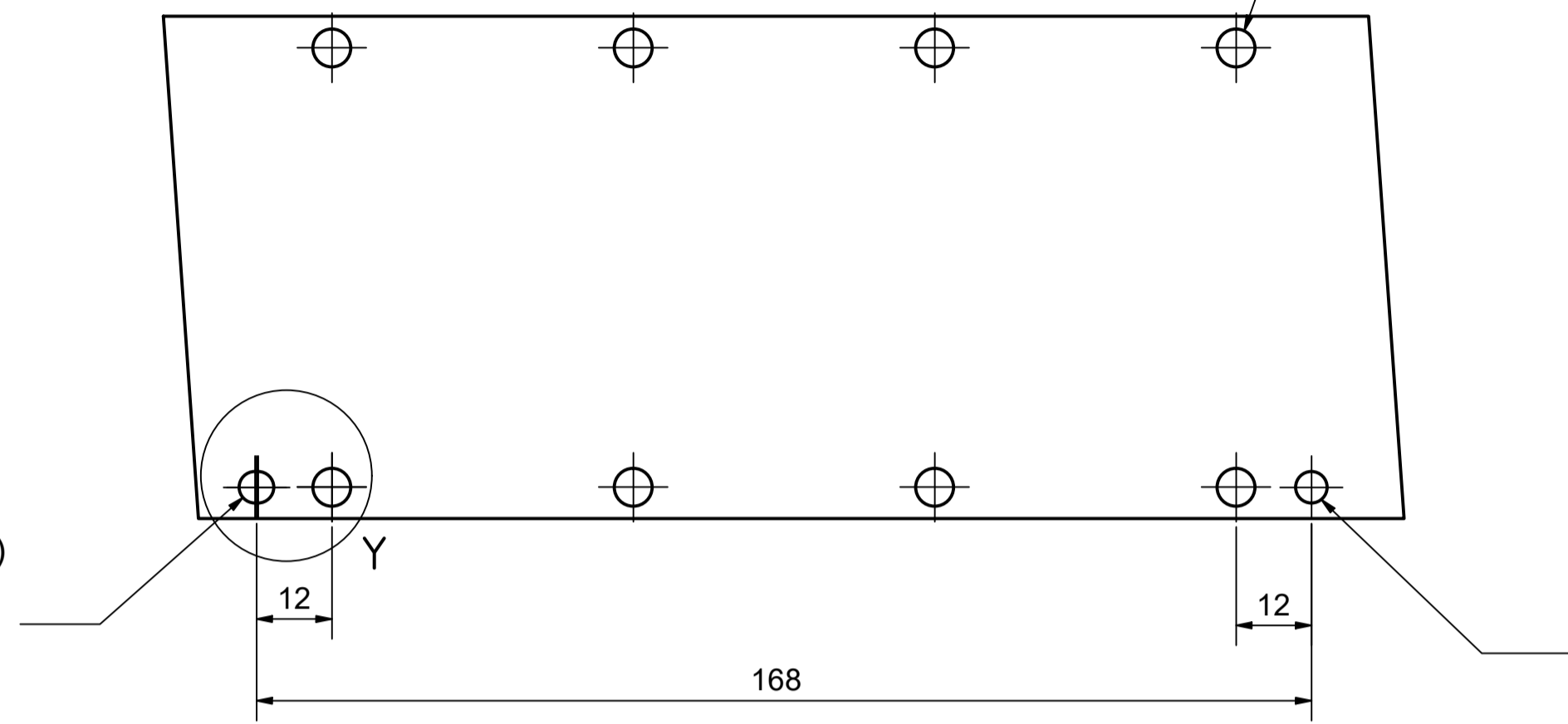


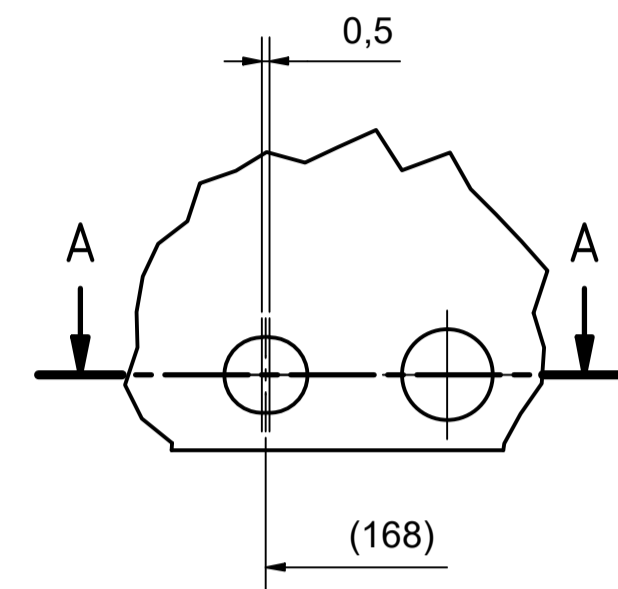
Hole \varnothing 6 mm for Screw M5 DIN 79884 (short head)
Loch \varnothing 6 mm für eine Schraube M5 DIN79884 (kurzer Kopf)

Slotted hole \varnothing 5 mm (3,5 mm deep)
for Dowel \varnothing 5 m6 (optional use)
Langloch \varnothing 5 mm (3,5 mm tief)
für Passsstift \varnothing 5 m6 (optional)

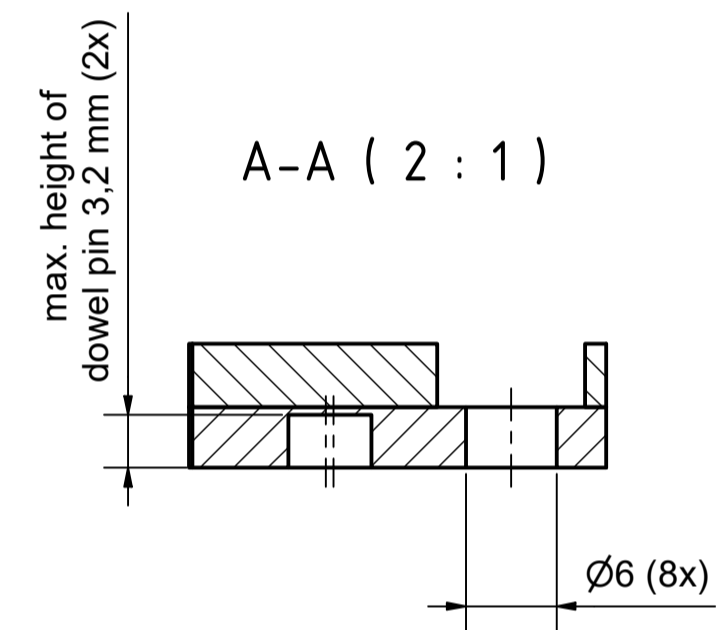
Hole \varnothing 5 mm (3,5 mm deep)
for Dowel \varnothing 5 m6 (optional use)
Bohrung \varnothing 5 mm (3,5 mm tief)
für Passsstift \varnothing 5 m6 (optional)



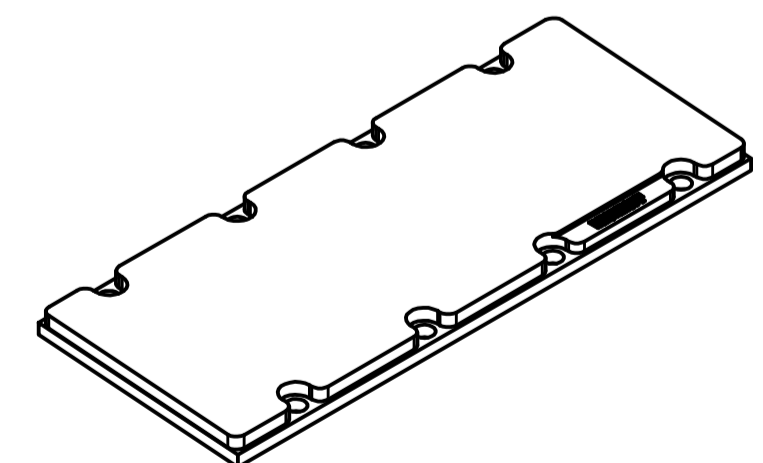
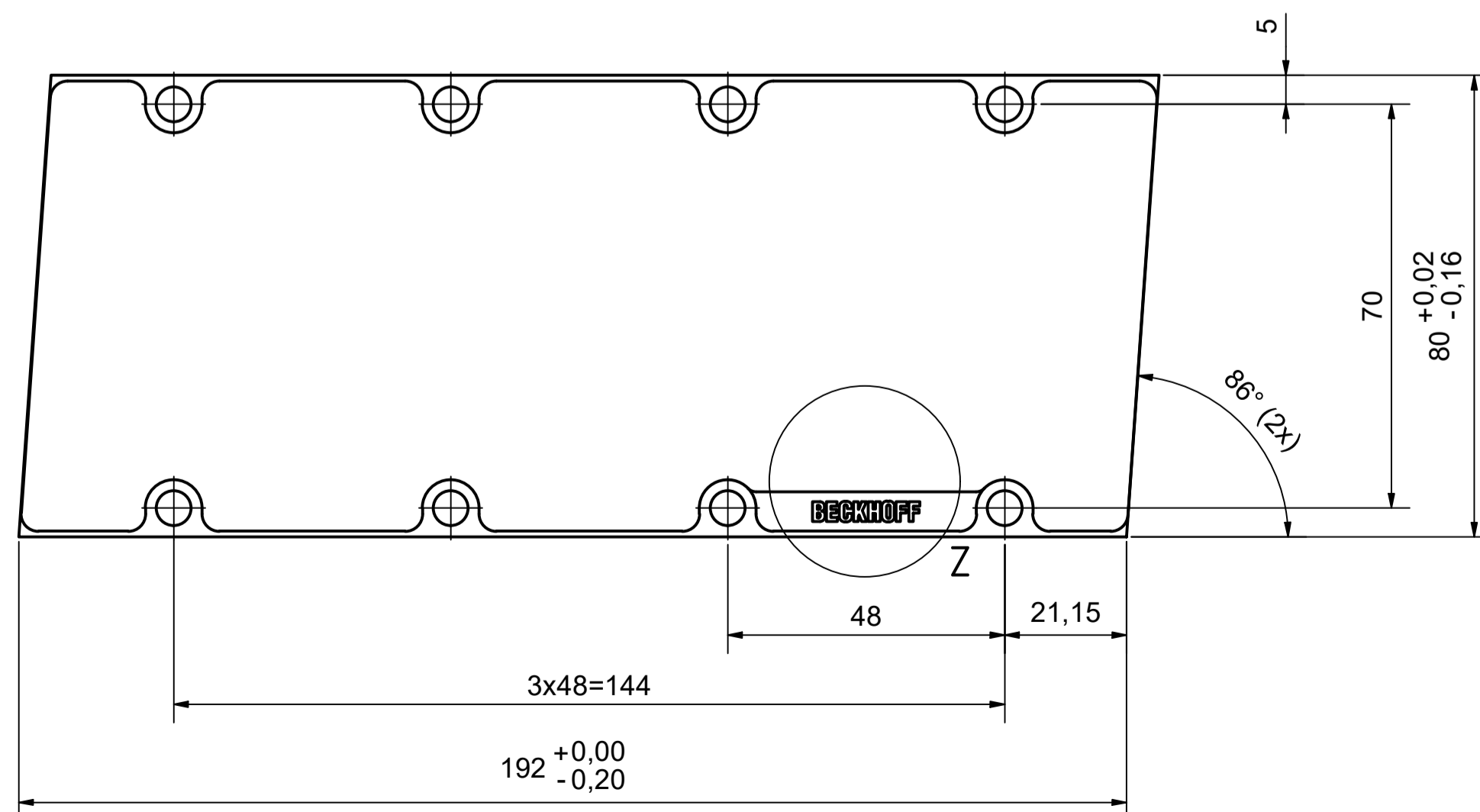
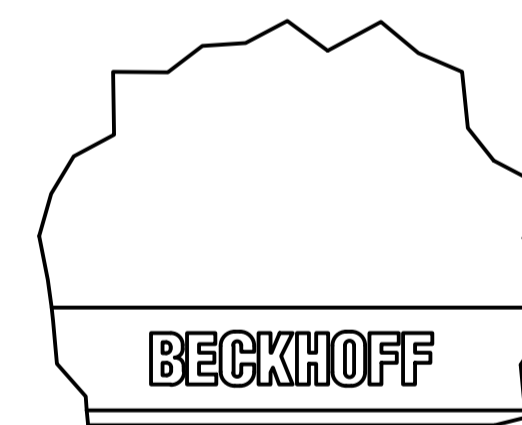
Y (2 : 1)



A-A (2 : 1)



Z (2 : 1)



M (1 : 2)

Bezeichnung / description Magnetplatte Magnet plate		Abteilungskennzeichen / department ID Motion	
AL8541-w000-0000		Dokumentennummer / document number 5000000103	
ISO 129 dimension	Maßstab scale	Blattgröße sheet size	Blatt sheet
mm	1 : 1	A1	1 / 1
Revision project name		Datum date	
A		08.05.2024	

Copyright reserved to ISO 15011
 In accordance with the provisions of the German Copyright Law of 1901, the reproduction of this document is permitted for private use only. Any other reproduction, distribution or use is prohibited. For more information, please contact the copyright holder.