

Manual | EN

# CU8210-D001-0200

WLAN USB stick for Arm®-based devices with Windows CE, for Europe,  
China





# Table of contents

<b>1</b>	<b>Notes on the documentation</b> .....	<b>5</b>
1.1	Representation and structure of warnings .....	6
1.2	Documentation issue status .....	7
<b>2</b>	<b>For your safety</b> .....	<b>8</b>
2.1	Intended use .....	8
2.2	Staff qualification .....	8
2.3	Safety instructions .....	9
<b>3</b>	<b>Product overview</b> .....	<b>10</b>
3.1	Structure.....	10
3.2	Name plate .....	11
3.3	System requirements .....	11
3.4	WLAN principles.....	12
<b>4</b>	<b>Configuration</b> .....	<b>13</b>
4.1	Installing the driver .....	13
4.2	Connecting to WLAN.....	15
<b>5</b>	<b>Diagnostic LED</b> .....	<b>18</b>
<b>6</b>	<b>Technical data</b> .....	<b>19</b>
6.1	WLAN channels .....	20
6.2	Dimensions .....	20
<b>7</b>	<b>Support and Service</b> .....	<b>21</b>
	<b>List of tables</b> .....	<b>22</b>
	<b>List of figures</b> .....	<b>23</b>



# 1 Notes on the documentation

This description is intended exclusively for trained specialists in control and automation technology who are familiar with the applicable national standards.

For installation and commissioning of the components, it is absolutely necessary to comply with the documentation and the following notes and explanations.

The qualified personnel is always obliged to use the currently valid documentation.

The responsible staff must ensure that the application or use of the products described satisfies all safety requirements, including all the relevant laws, regulations, guidelines, and standards.

## Disclaimer

The documentation has been prepared with care. The products described are, however, constantly under development.

We reserve the right to revise and change the documentation at any time and without notice.

No claims to modify products that have already been supplied may be made on the basis of the data, diagrams, and descriptions in this documentation.

## Trademarks

Beckhoff®, TwinCAT®, TwinCAT/BSD®, TC/BSD®, EtherCAT®, EtherCAT G®, EtherCAT G10®, EtherCAT P®, Safety over EtherCAT®, TwinSAFE®, XFC®, XTS® and XPlanar® are registered and licensed trademarks of Beckhoff Automation GmbH.

If third parties make use of designations or trademarks used in this publication for their own purposes, this could infringe upon the rights of the owners of the said designations.

## Patents

The EtherCAT Technology is covered by the following patent applications and patents, without this constituting an exhaustive list:

EP1590927, EP1789857, EP1456722, EP2137893, DE102015105702

and similar applications and registrations in several other countries.

**EtherCAT** 

EtherCAT® is registered trademark and patented technology, licensed by Beckhoff Automation GmbH, Germany

## Copyright

© Beckhoff Automation GmbH & Co. KG, Germany.

The distribution and reproduction of this document, as well as the use and communication of its contents without express authorization, are prohibited.

Offenders will be held liable for the payment of damages. All rights reserved in the event that a patent, utility model, or design are registered.

## 1.1 Representation and structure of warnings

The following warnings are used in the documentation. Read and follow the warnings.

### Warnings relating to personal injury:

 **DANGER**

Hazard with high risk of death or serious injury.

 **WARNING**

Hazard with medium risk of death or serious injury.

 **CAUTION**

There is a low-risk hazard that can result in minor injury.

### Warnings relating to damage to property or the environment:

**NOTICE**

There is a potential hazard to the environment and equipment.

### Notes showing further information or tips:



This notice provides important information that will be of assistance in dealing with the product or software. There is no immediate danger to product, people or environment.

## 1.2 Documentation issue status

Version	Modifications
1.0	First version
1.1	WLAN channels chapter adapted

## 2 For your safety

Read the chapter on safety and follow the instructions in order to protect from personal injury and damage to equipment.

### Limitation of liability

All the components are supplied in particular hardware and software configurations appropriate for the application. Unauthorized modifications and changes to the hardware or software configuration, which go beyond the documented options, are prohibited and nullify the liability of Beckhoff Automation GmbH & Co. KG.

In addition, the following actions are excluded from the liability of Beckhoff Automation GmbH & Co. KG:

- Failure to comply with this documentation.
- Improper use.
- Use of untrained personnel.
- Use of unauthorized replacement parts.

## 2.1 Intended use

With the CU8210-D001-0200 WLAN stick, Beckhoff Industrial PCs can be equipped with a WLAN module and subsequently connected to a network.

The WLAN stick was developed for a work environment that conforms to protection class IP20. This involves finger protection and protection against solid foreign objects up to 12.5 mm, but not protection against water. Operation of the devices in wet and dusty environments is not permitted, unless specified otherwise. The specified limits for electrical and technical data must be adhered to.

The WLAN stick is used:

- to equip Industrial PCs with a network connection without a comprehensive cable-based infrastructure, or
- to reach difficult to access machine or plants more easily.

### Improper use

The WLAN stick is not suitable for operation in the following areas:

- areas in which the use of radio devices is prohibited.
- Potentially explosive atmospheres.
- Areas with an aggressive environment, e.g. aggressive gases or chemicals.
- applications that require real-time communication via radio.

## 2.2 Staff qualification

All operations involving Beckhoff software and hardware may only be carried out by qualified personnel with knowledge of control and automation engineering. The qualified personnel must have knowledge of the administration of the Industrial PC and the associated network.

All interventions must be carried out with knowledge of control programming, and the qualified personnel must be familiar with the current standards and guidelines for the automation environment.



## 2.3 Safety instructions

The following safety instructions must be followed during installation and working with networks and the software.

### **Working with networks**

- Restrict access to all devices to an authorized circle of persons.
- Change the default passwords to reduce the risk of unauthorized access.
- Protect the devices with a firewall.
- Apply the IT security precautions according to IEC 62443, in order to limit access to and control of devices and networks.

### 3 Product overview

With the CU8210-D001-0200 WLAN stick, Beckhoff Industrial PCs can be equipped with a WLAN module and operated under Windows CE in client mode.

The WLAN stick offers the encrypted exchange of data at a transfer rate of up to 150 Mbit/s and supports 20 MHz and 40 MHz transmission bandwidths. The WLAN stick supports the IEEE 802.11 b/g/n specifications. The WLAN stick is backward compatible and enables communication with older devices.

The WiFi Direct standard is not supported. This means that no connection can be established between two WLAN end devices without a central access point.

#### 3.1 Structure

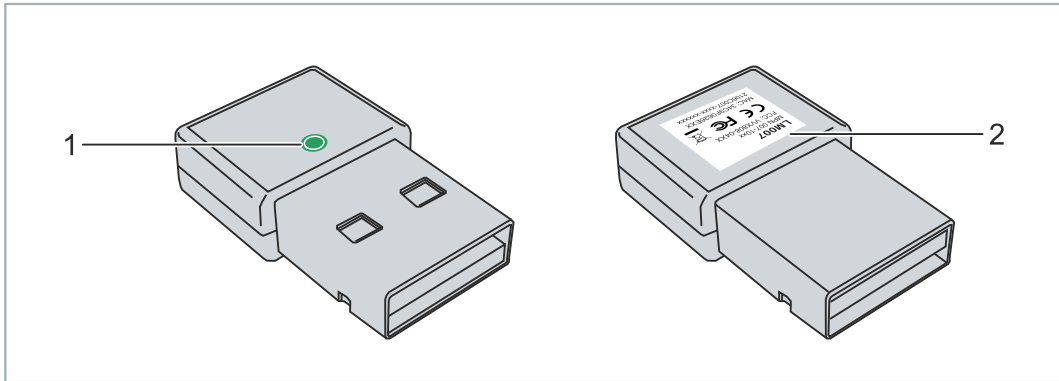


Fig. 1: Structure of a CU8210-D001-0200 WLAN stick.

Table 1: Legend for the configuration.

No.	Component	Description
1	Diagnostic LED [► 18]	The LED is located under the plastic. The diagnostic LED indicates the status of the WLAN stick and, for example, whether the WLAN stick is switched on or is connected to a network.
2	Name plate	The name plate can be used for the identification of the model. The MAC address can be found here.

### 3.2 Name plate

The WLAN sticks are available in two versions, which differ only in the type of certification. Depending on the certification, the sticks can be used in certain regions or countries.

The name plate makes it easier to find a stick with the appropriate certification for a region or country. The name plate is located on the housing of the WLAN stick:

- The marking LM007 corresponds to the CU8210-D001-0200 WLAN stick, which is suitable for operation in Europe, China.

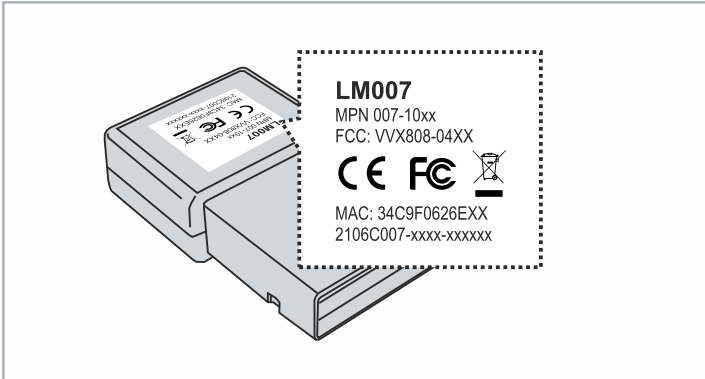


Fig. 2: CU8210-D001-0200 Name plate.

In addition, the MAC address of the WLAN stick is shown on the name plate and a list of certificates on the USB plug.

### 3.3 System requirements

Table 2: CU8210-D001-0200 System requirements.

Operating system	Version
Windows	Windows CE6
	Windows CE7

## 3.4 WLAN principles

WLAN (Wireless Local Area Network) is a radio technology that makes wireless networks and wireless internet access possible. WLAN, which is defined by the IEEE 802.11 standards family, can be configured in the following mode:

### Infrastructure network

The main difference between wireless infrastructure networks and wireless ad hoc networks is that the PCs in a wireless infrastructure network can access the Internet via an access point.

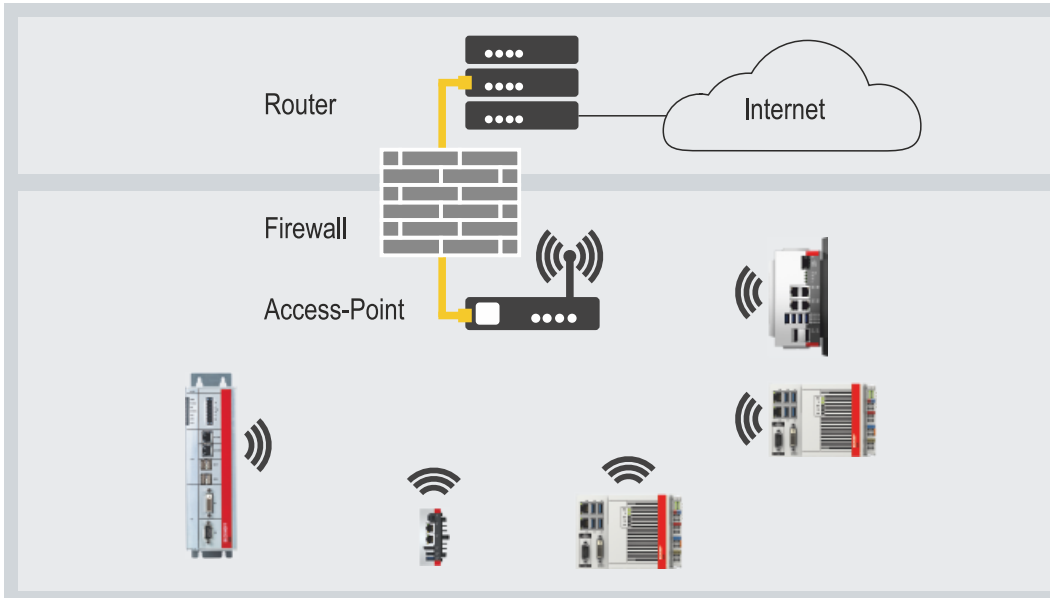


Fig. 3: Example of an infrastructure network.

Pay attention to security when setting up an infrastructure network, because a connection to the internet is a potential weak point in the network infrastructure.

### Encryption

WLAN encryption is an important security setting and you must ensure that no unauthorized user can log on and use the network resources. The WLAN stick supports the WPA2 (Wi-Fi Protected Access) security mechanism,

where a key that is used to encrypt the data is defined in the access point or router. This key must be entered in the clients' settings and must match the defined key.

Encryption with WEP is obsolete and can be decrypted in a short time.

### Frequency range

If several WLANs are operated within a small radius, mutual interference can occur because both WLANs work in the same frequency range or the distance between the channels is too small.

This can affect the connection quality in terms of reliability and data transfer rate.

If there are persistent disturbances, select a different channel to prevent frequency sharing.

## 4 Configuration

### 4.1 Installing the driver

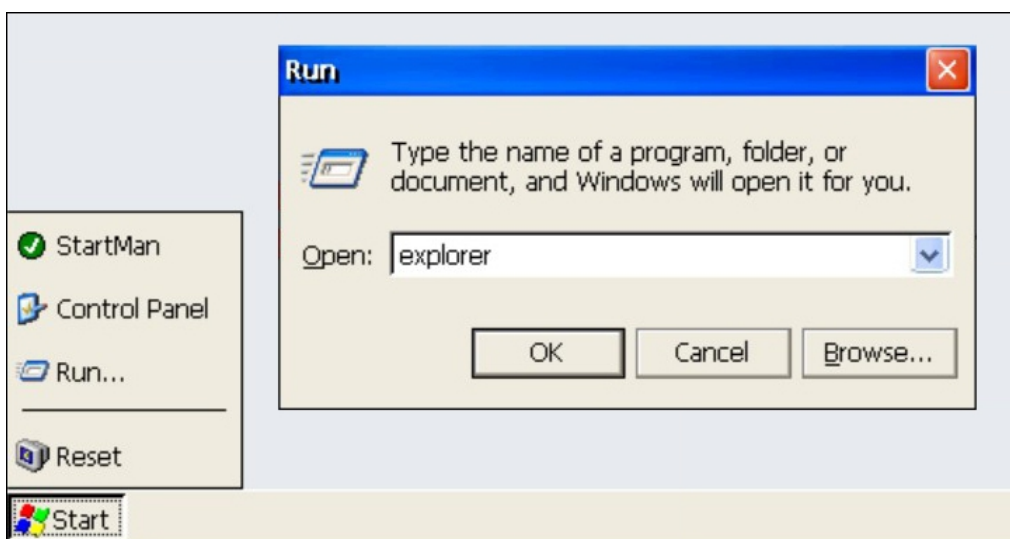
In order to use the WLAN stick under Windows CE, the appropriate driver must first be installed. To do this, the driver files must first be copied to an industrial PC with Windows CE and then the Cabinet file must be executed.

Requirements:

- Driver: provided by Beckhoff Service.
- Make sure that the WLAN stick is not yet connected to the Industrial PC.

Install the driver as follows:

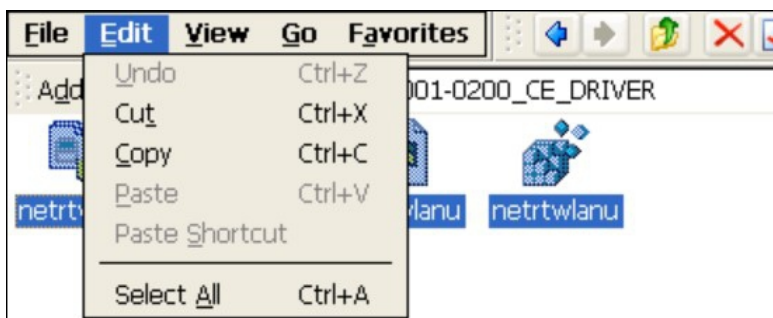
1. Copy the driver to an external data carrier, for example to a USB stick.
2. Insert the USB stick, click **Start > Run** and type "explorer" in the window **Run** to start the explorer.



3. Select the data carrier on which the driver is located. In this example it is a USB stick with the drive name **Hard Disk2**.



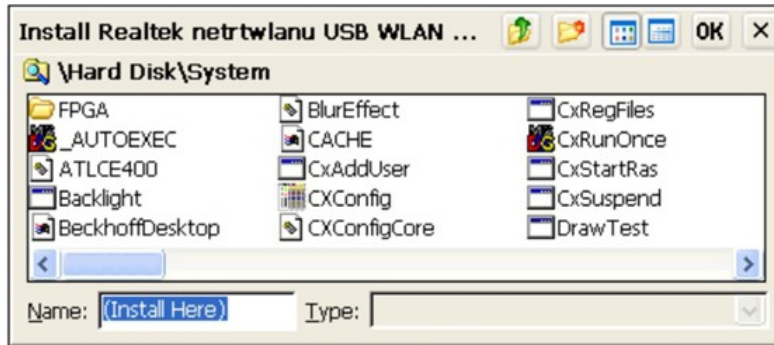
4. Copy the four files into the Temp folder of the industrial PC.



5. Run the cabinet file **netrtwlanu** with a double click.



6. Install the driver into the directory *\Hard Disk\System*.



- ⇒ After installation, plug the WLAN stick into the industrial PC. After a short time, a network icon will appear in the taskbar. Double-click the icon to display the settings and the 2.4 GHz WLAN networks within range. In the next step, you can connect to a WLAN within range (see: [Connecting to WLAN \[► 15\]](#)).

## 4.2 Connecting to WLAN

After installation, plug the WLAN stick into the industrial PC. After installing the appropriate drivers, a network icon will appear in the taskbar. Double-click the icon to display the settings and the 2.4 GHz WLAN networks within range.

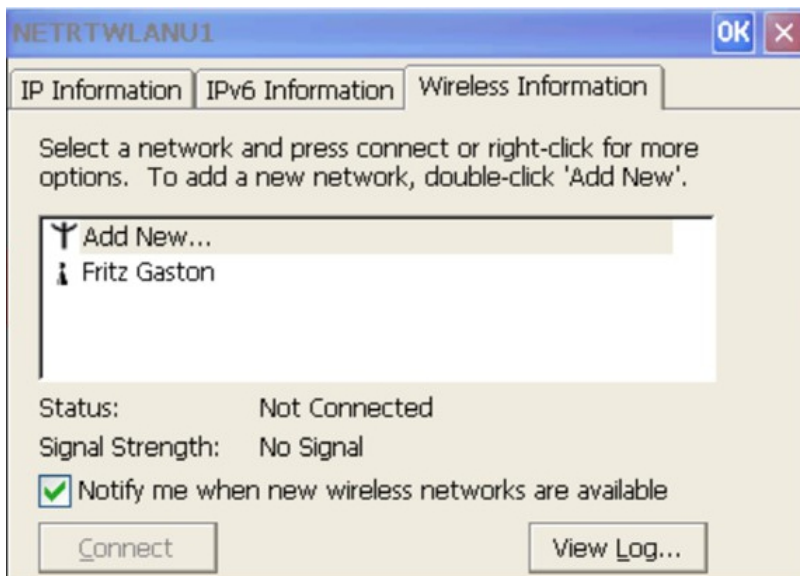
The drivers of the WLAN stick do not support Wi-Fi Direct functions. For this reason, the WLAN stick cannot be connected to the virtual access point from Beckhoff, which is based on Wi-Fi Direct.

Requirements:

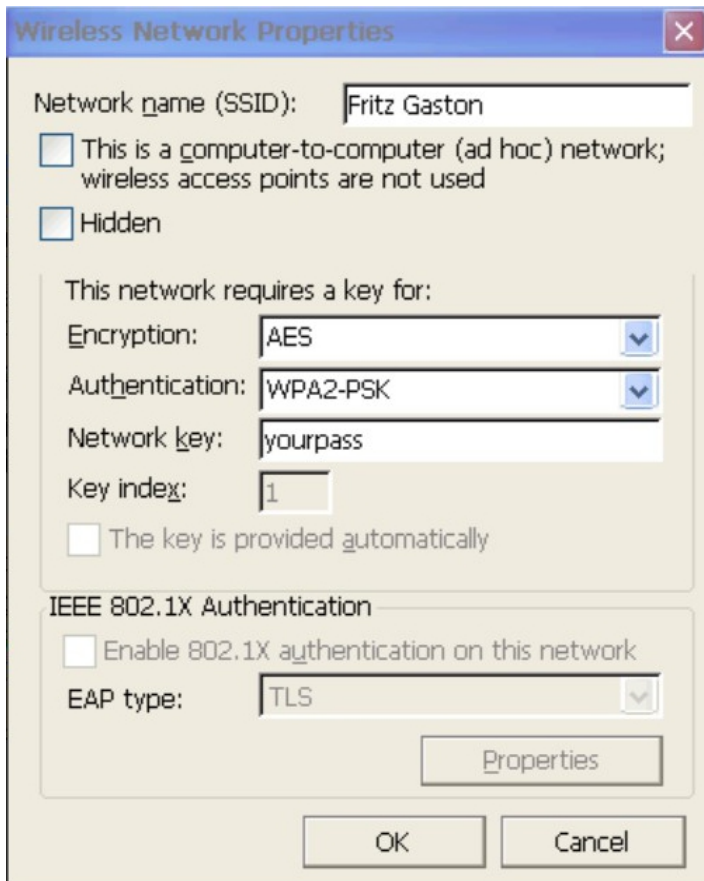
- Existing WLAN with configured access point.
- WLAN key (password).

**Proceed as follows:**

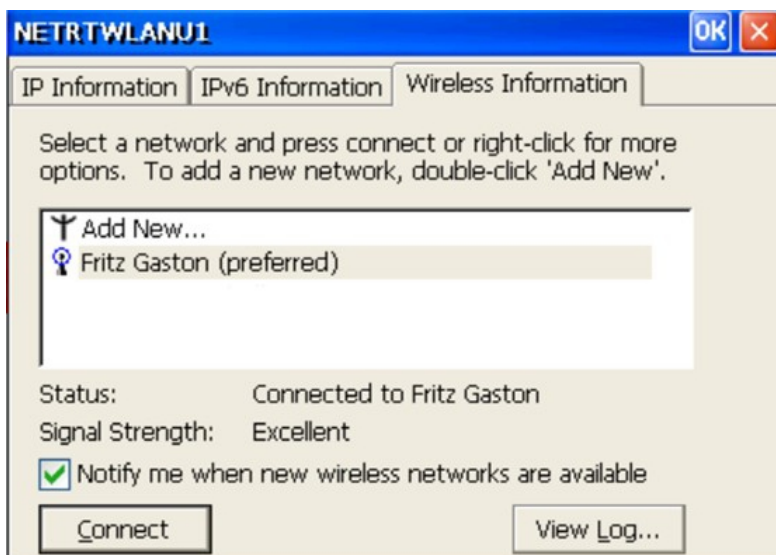
1. Double-click the network icon in the taskbar to open the WLAN network settings.
2. Click the **Wireless Information** tab, select the appropriate network (SSID) and click **Connect**.



3. Enter the password for the network and click **OK**.

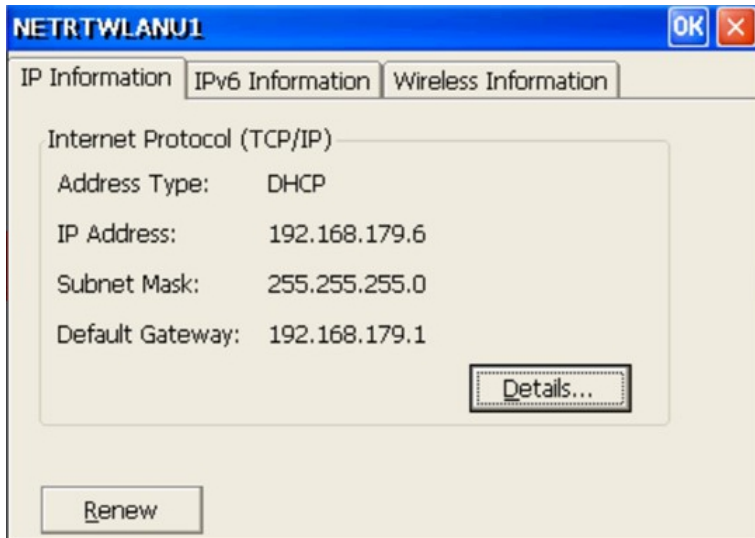


4. The connection is being established. The status is changed and the icon of the network is displayed with a blue circle.

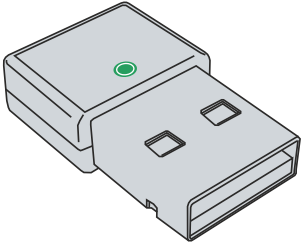




- ⇒ By default, DHCP is preset. If you are working with fixed IP addresses, the settings for this can be changed under the other two tabs.



## 5 Diagnostic LED

Display	Error code	Description
	Off	No connection.
	Lights up green	Connection established.

## 6 Technical data

Table 3: Technical data, dimensions and weights.

	<b>CU8210-D001-0200</b>
Dimensions (W x H x D)	14.4 mm x 5.8 mm x 23.4 mm
Weight	approx. 2.2 g

Table 4: Technical data, general data.

	<b>CU8210-D001-0200</b>
Chipset	Realtek
Number of transmitters	1 transmitter, 1 receiver
Standards	IEEE 802.11 b/g/n
Data transfer rate	1,2,5.5,6,11,12,18,22,24,30,36,48,54,60,90,120, and maximum 150 Mbit/s
Encryption	WEP, WPA/WPA2 (TKIP/AES)
Modulation method	BPSK/ QPSK/ 16-QAM/ 64-QAM
Frequency band	2.4 GHz ISM Band
RF Output Power	17 dBm - 802.11b
(Tolerance ±2 dBm)	15 dBm - 802.11g 13 dBm - 802.11n
Receiver sensitivity	-80 dBm - 802.11b -70 dBm - 802.11g -64 dBm - 802.11n

Table 5: Technical data, approvals.

	<b>CU8210-D001-0200</b>
Approvals	Europe, China

Table 6: Technical data, environmental conditions.

	<b>CU8210-D001-0200</b>
Ambient temperature during operation	-20 °C ... +85 °C ambient temperature 5 to 90 % (non-condensing)
Ambient temperature during storage	-40 °C ... +80 °C ambient temperature 5 to 90 % (non-condensing)
Protection class	IP 20

## 6.1 WLAN channels

Depending on the target market, the number of WLAN channels to be used may vary. Please contact your local authorities for more information. Depending on the country, the WLAN stick supports channels 1 to 14 in the 2 GHz range.

## 6.2 Dimensions

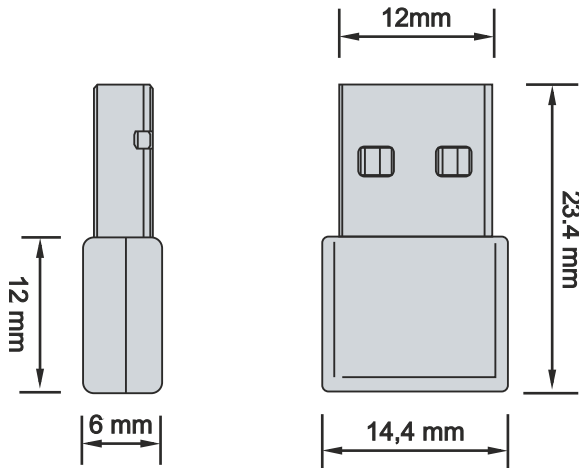


Fig. 4: CU8210-D001-0200 Dimensions.

## 7 Support and Service

Beckhoff and their partners around the world offer comprehensive support and service, making available fast and competent assistance with all questions related to Beckhoff products and system solutions.

### Download finder

Our [download finder](#) contains all the files that we offer you for downloading. You will find application reports, technical documentation, technical drawings, configuration files and much more.

The downloads are available in various formats.

### Beckhoff's branch offices and representatives

Please contact your Beckhoff branch office or representative for [local support and service](#) on Beckhoff products!

The addresses of Beckhoff's branch offices and representatives round the world can be found on our internet page: [www.beckhoff.com](http://www.beckhoff.com)

You will also find further documentation for Beckhoff components there.

### Beckhoff Support

Support offers you comprehensive technical assistance, helping you not only with the application of individual Beckhoff products, but also with other, wide-ranging services:

- support
- design, programming and commissioning of complex automation systems
- and extensive training program for Beckhoff system components

Hotline: +49 5246 963-157  
e-mail: [support@beckhoff.com](mailto:support@beckhoff.com)

### Beckhoff Service

The Beckhoff Service Center supports you in all matters of after-sales service:

- on-site service
- repair service
- spare parts service
- hotline service

Hotline: +49 5246 963-460  
e-mail: [service@beckhoff.com](mailto:service@beckhoff.com)

### Beckhoff Headquarters

Beckhoff Automation GmbH & Co. KG

Huelshorstweg 20  
33415 Verl  
Germany

Phone: +49 5246 963-0  
e-mail: [info@beckhoff.com](mailto:info@beckhoff.com)  
web: [www.beckhoff.com](http://www.beckhoff.com)

## List of tables

Table 1	Legend for the configuration. ....	10
Table 2	CU8210-D001-0200 System requirements. ....	11
Table 3	Technical data, dimensions and weights. ....	19
Table 4	Technical data, general data. ....	19
Table 5	Technical data, approvals. ....	19
Table 6	Technical data, environmental conditions. ....	19

## List of figures

Fig. 1	Structure of a CU8210-D001-0200 WLAN stick.....	10
Fig. 2	CU8210-D001-0200 Name plate.....	11
Fig. 3	Example of an infrastructure network.....	12
Fig. 4	CU8210-D001-0200 Dimensions. ....	20

## **Trademark statements**

Beckhoff®, TwinCAT®, TwinCAT/BSD®, TC/BSD®, EtherCAT®, EtherCAT G®, EtherCAT G10®, EtherCAT P®, Safety over EtherCAT®, TwinSAFE®, XFC®, XTS® and XPlanar® are registered trademarks of and licensed by Beckhoff Automation GmbH.

## **Third-party trademark statements**

Microsoft, Microsoft Azure, Microsoft Edge, PowerShell, Visual Studio, Windows and Xbox are trademarks of the Microsoft group of companies.



More Information:

[www.beckhoff.com/CU8210-D001-0200](http://www.beckhoff.com/CU8210-D001-0200)

Beckhoff Automation GmbH & Co. KG  
Hülshorstweg 20  
33415 Verl  
Germany  
Phone: +49 5246 9630  
[info@beckhoff.com](mailto:info@beckhoff.com)  
[www.beckhoff.com](http://www.beckhoff.com)

