

# Product information | CP3224-1100-00x0 keylock switch assembly

You can retrofit up to two keylock switches on the CP3224-1100-00x0 push-button extension. State the following order number: C9900-Z565. The keylock switches replace the two dummy plugs in the push-button extension.

To install a key switch, follow the steps below:

1. Remove the eight M3 screws on the cover of the push-button extension (section A).
2. Remove the cover of the push button extension (section B).

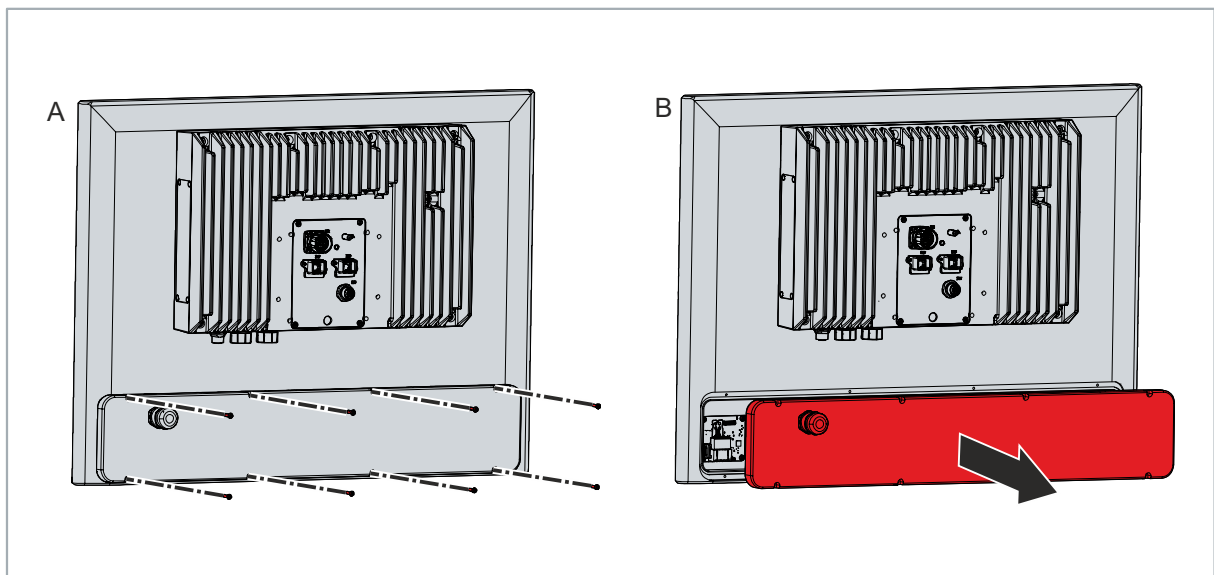


Fig. 1: Removing the push-button extension cover

3. Unscrew the union nut of the dummy plug (section C).
4. Remove the dummy plug from the push-button extension from the front side (section D).

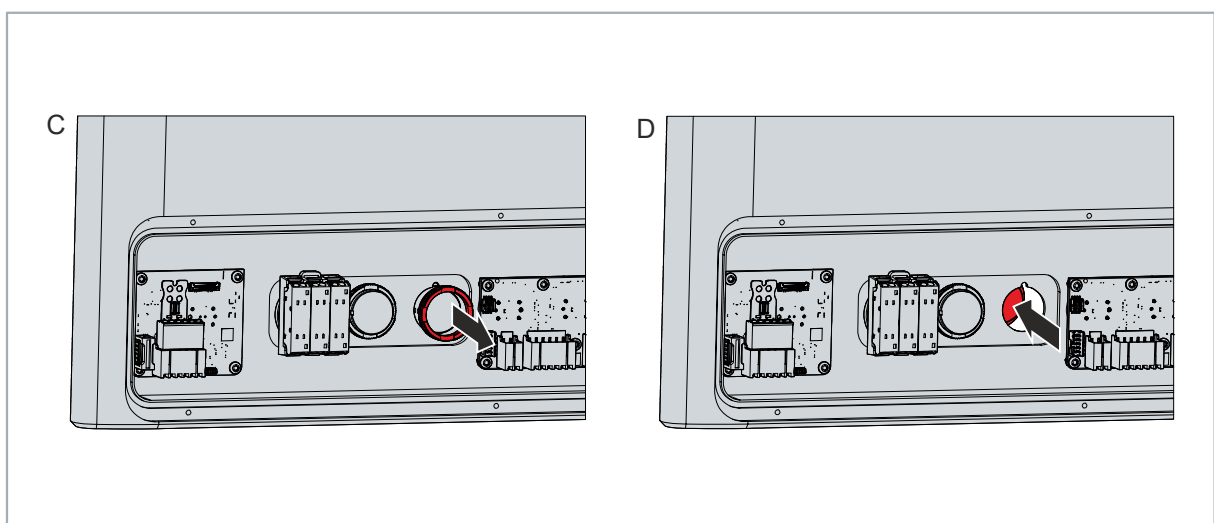


Fig. 2: Removing the dummy plugs

5. On the front side, insert the keylock switch into the push-button extension (section E).
6. On the rear side, place the union nut on the key switch (section F).

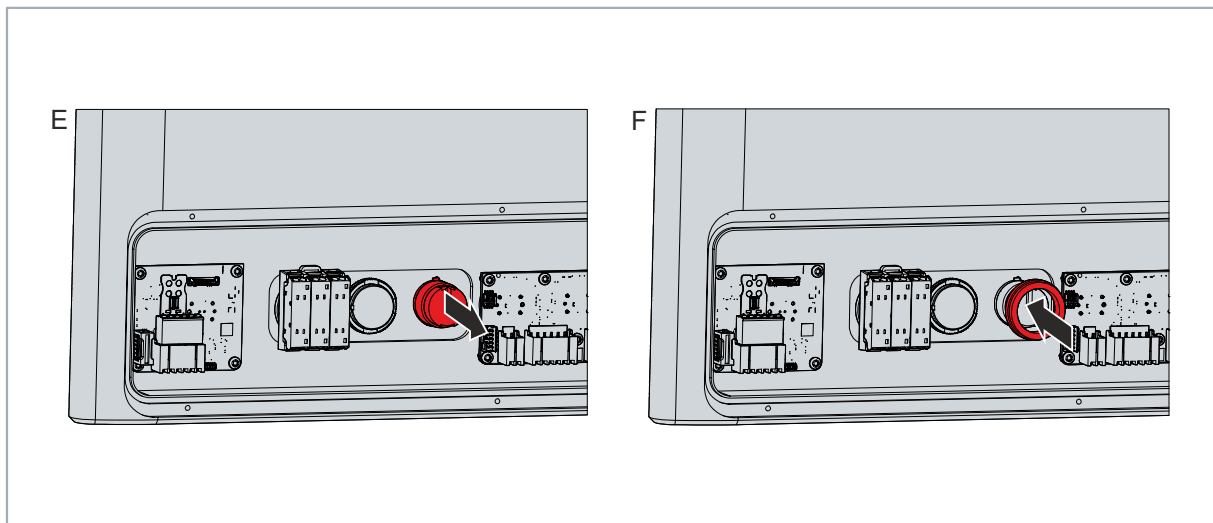


Fig. 3: Keylock switch assembly

7. On the rear side, push the switching element holder onto the switch (section G).
8. Attach the switching element to the switching element holder (section H).

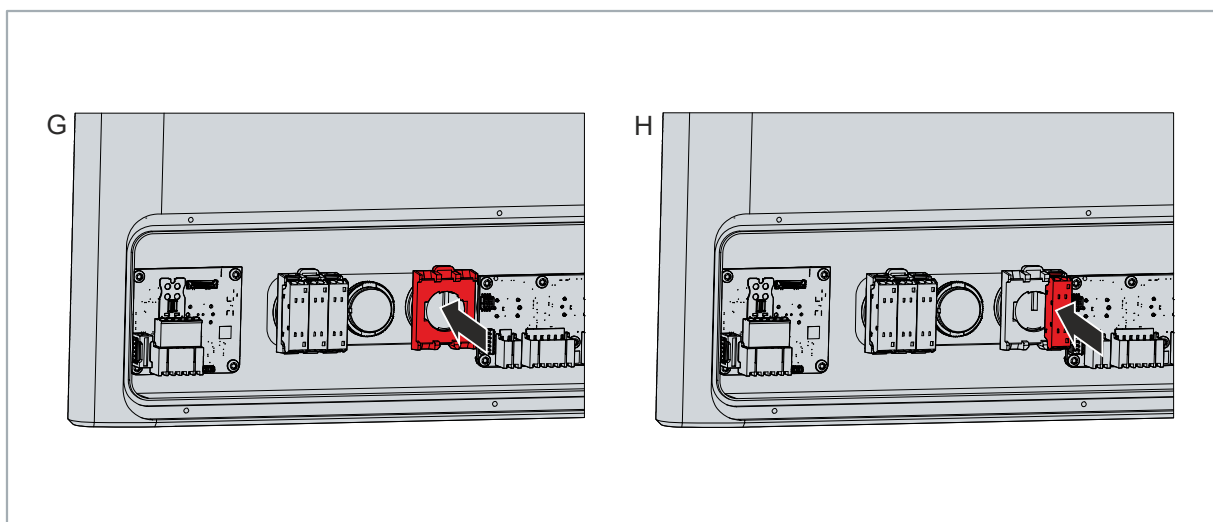


Fig. 4: Assembling the switching element

➔ You have fitted the keylock switch.

After you have mounted the keylock switch, you must wire it in the push-button extension. Choose from the inputs on the A919 board (see [C9900-G00x-G02x](#) manual).

Beckhoff®, TwinCAT®, TwinCAT/BSD®, TC/BSD®, EtherCAT®, EtherCAT G®, EtherCAT G10®, EtherCAT P®, Safety over EtherCAT®, TwinSAFE®, XFC®, XTS®, and XPlanar® are registered trademarks of, and licensed by, Beckhoff Automation GmbH. Other designations used in this documentation may be trademarks, the use of which by third parties for their own purposes could violate the rights of the owners.

© Beckhoff Automation GmbH & Co. KG 6/2/2025

The information provided in this publication only contains general descriptions or performance characteristics that may not necessarily apply to specific applications or may change during further product development. An obligation to provide the respective characteristics shall only exist if expressly agreed in the terms of contract.