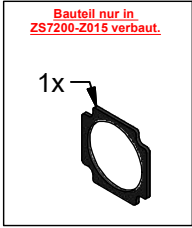
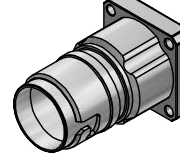
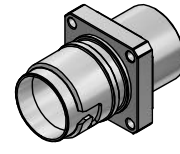
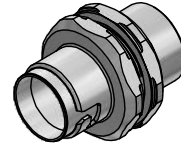
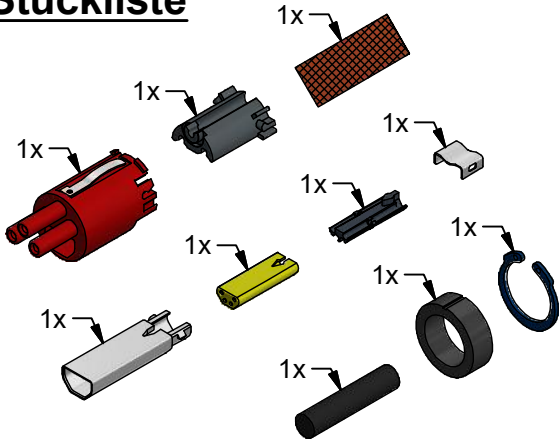


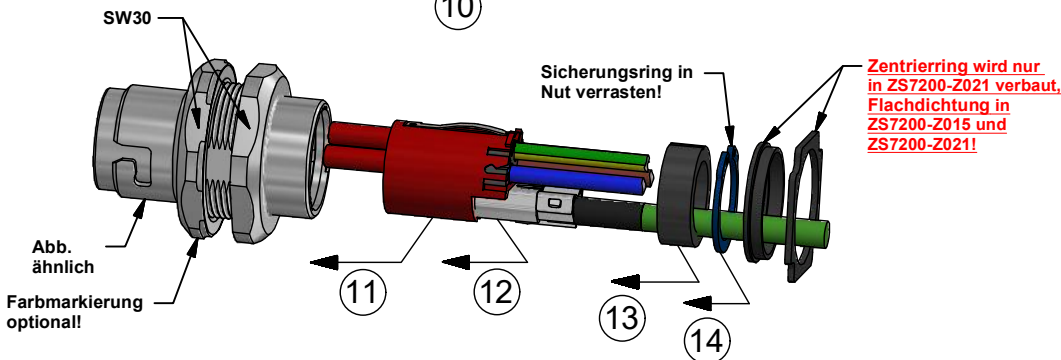
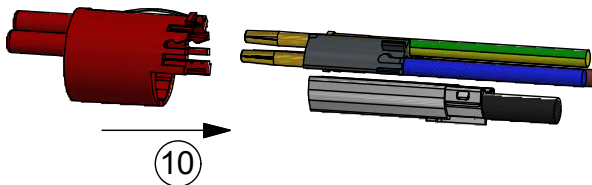
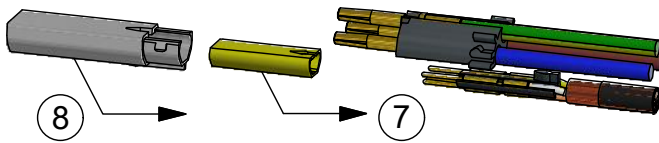
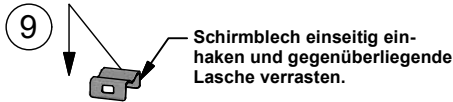
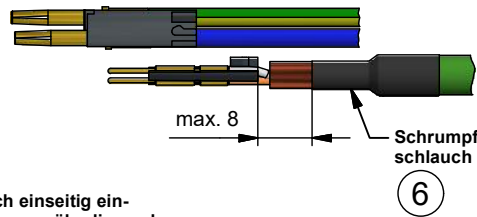
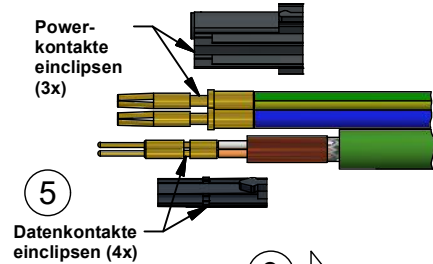
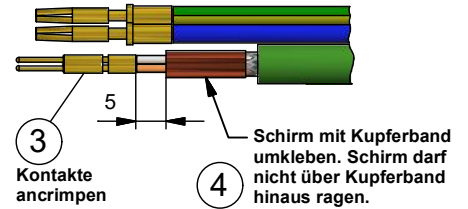
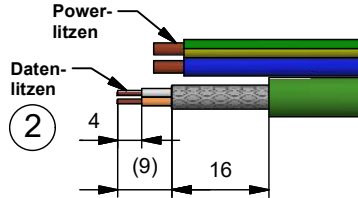
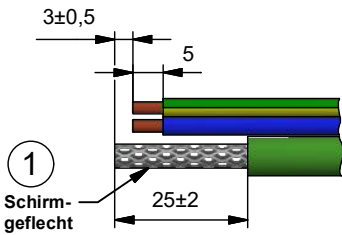
Montageanleitung B17 Hybrid

konfektionierbares Flanschgehäuse mit Crimpanschluss, axial,
3x2,5mm² + 4xAWG22, ENP: Powerbuchse / Datenstift

Stückliste



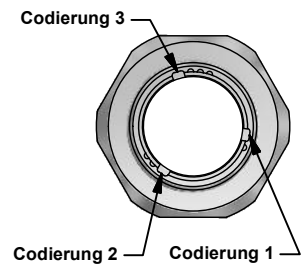
Flanschgehäuse ist von der Produktnummer abhängig!



Laufrichtung beachten!
Achtung: Ansicht von Steckgesicht dargestellt!

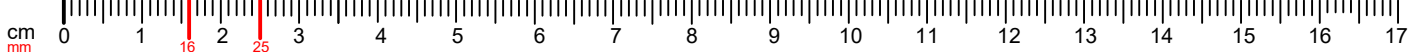


Achtung: Ansicht von Kabelausgang dargestellt! Auf richtige Farbwahl achten!



Werkzeug / Zubehör

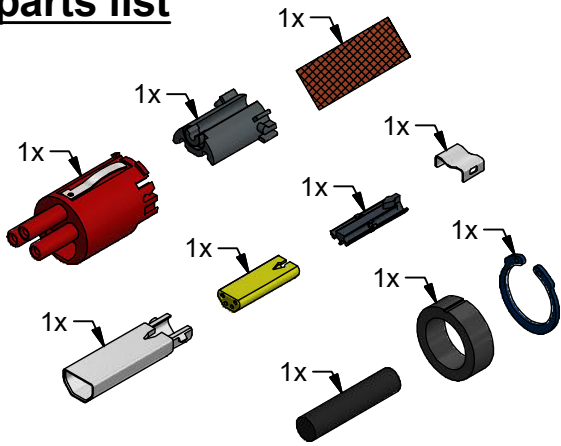
Crimpzange	Crimpeinsatz / Locator
ZB8810-0000	ZB8810-0001



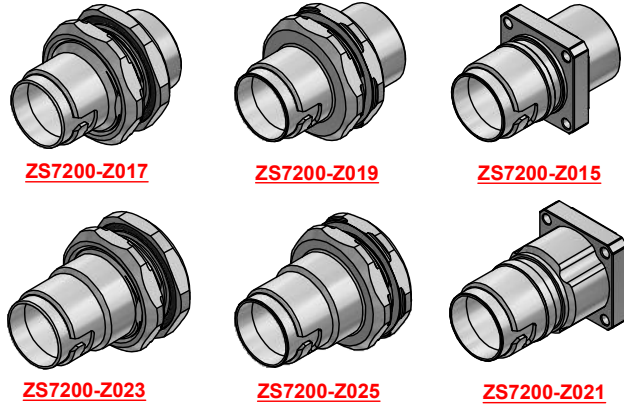
Assembly instruction B17 hybrid

field attachable flange housing with crimp connection, axial,
 3x2.5mm² + 4xAWG22, ENP: power (female) / data (male)

parts list

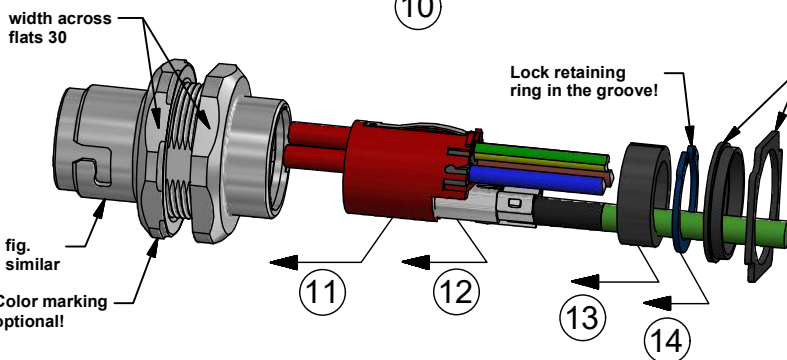
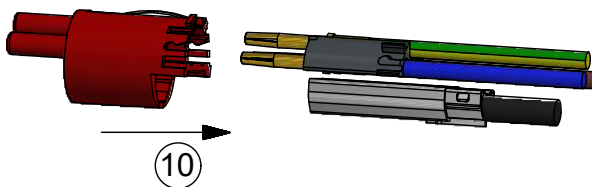
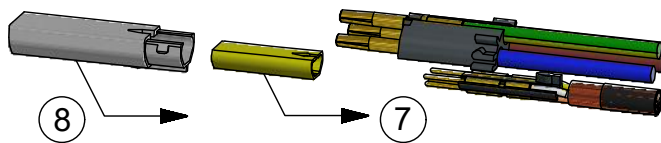
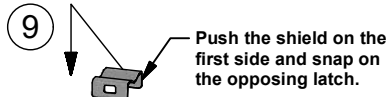
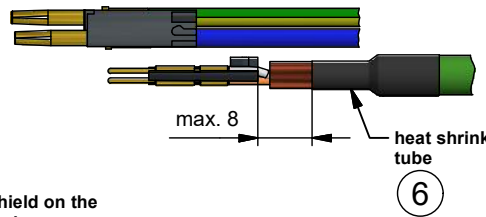
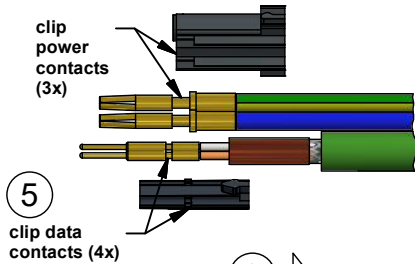
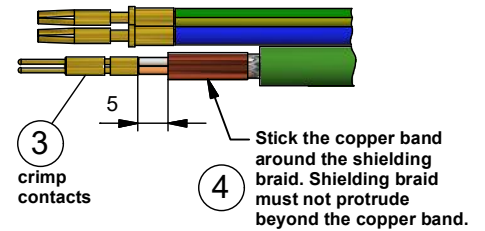
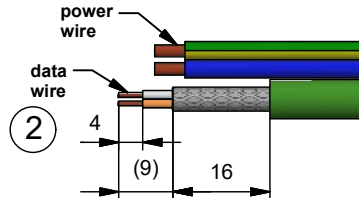
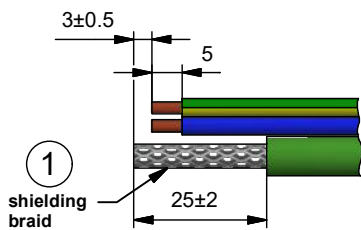


Flange type depends on product number!

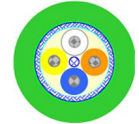


Component only installed in ZS7200-Z015.

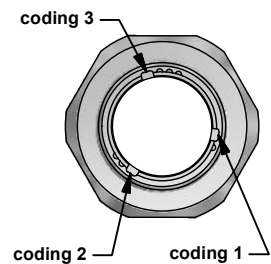
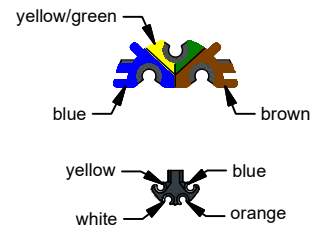
Components only installed in ZS7200-Z021.



Please consider the cable direction!
 Attention: View from mating side!



Attention: View from cable outlet!
 Consider the right choice of colors!



tools / accessory parts

crimping tool	crimping insert / locator
ZB8810-0000	ZB8810-0001