



Documentation

Magnetic Encoder System (MES)

Version: 1.1
Date: 2016-02-26

BECKHOFF

Table of content

1 Foreword	4
1.1 Notes on the documentation	4
1.2 Intended use	5
1.3 Documentation issue status.....	5
2 Guidelines and Standards	6
3 Product overview	7
3.1 Scope of supply	7
3.2 Type key	7
4 Properties	8
5 Dimensions	9
6 Mounting	10
7 Support and Service	11

1 Foreword

1.1 Notes on the documentation

This description is only intended for the use of trained specialists in control and automation engineering who are familiar with the applicable national standards.

It is essential that the following notes and explanations are followed when installing and commissioning these components.

The responsible staff must ensure that the application or use of the products described satisfy all the requirements for safety, including all the relevant laws, regulations, guidelines and standards.

Disclaimer

The documentation has been prepared with care. The products described are, however, constantly under development.

For that reason the documentation is not in every case checked for consistency with performance data, standards or other characteristics.

In the event that it contains technical or editorial errors, we retain the right to make alterations at any time and without warning.

No claims for the modification of products that have already been supplied may be made on the basis of the data, diagrams and descriptions in this documentation.

Trademarks

Beckhoff®, TwinCAT®, EtherCAT®, Safety over EtherCAT®, TwinSAFE®, XFC® and XTS® are registered trademarks of and licensed by Beckhoff Automation GmbH.

Other designations used in this publication may be trademarks whose use by third parties for their own purposes could violate the rights of the owners.

Patent Pending

The EtherCAT Technology is covered, including but not limited to the following patent applications and patents:

EP1590927, EP1789857, DE102004044764, DE102007017835

with corresponding applications or registrations in various other countries.

The TwinCAT Technology is covered, including but not limited to the following patent applications and patents:

EP0851348, US6167425 with corresponding applications or registrations in various other countries.

EtherCAT®

EtherCAT® is registered trademark and patented technology, licensed by Beckhoff Automation GmbH, Germany

Copyright

© Beckhoff Automation GmbH & Co. KG, Germany.

The reproduction, distribution and utilization of this document as well as the communication of its contents to others without express authorization are prohibited.

Offenders will be held liable for the payment of damages. All rights reserved in the event of the grant of a patent, utility model or design.

1.2 Intended use

The Magnetic Encoder System (MES) provides the feedback signal for linear motors from the AL2xxx series and is to be operated exclusively on a servo drive.

Linear feedback systems are required for the commutation and the detection of the velocity and position of brushless linear motors. Such feedback systems consist of a reader head and a graduated rule installed parallel to the travel path. The AL2200 works directly on the magnetic plates of the linear motor, eliminating the need for an additional graduated rule. It detects the magnetic field of the permanent magnets of the magnetic plates and supplies the encoder signals to the servo drive. Since the MES is a semi-absolute feedback system, no wake & shake is required in order to determine the commutation angle at machine start-up. The MES supplies one sine oscillation per logical motor revolution. A logical motor revolution is equivalent to the distance between two homopolar magnets, i.e. between two north poles, for example. The attainable accuracy of ± 0.1 mm is sufficient for simple positioning tasks and depends to a large extent on the mechanical accuracy and position of the magnets along the travel path. Since no graduated rule has to be installed, the MES is an inexpensive feedback solution for linear motors.

1.3 Documentation issue status

Issue	Comment
1.1	New chapter: Product overview
1.0	First edition

2 Guidelines and Standards



CAUTION

Danger for persons, the environment or equipment

The Magnetic Encoder System (MES) is **not** a product within the meaning of the EC Machinery Directive. Operation of MES in machines or systems is only permitted once the machine or system manufacturers has provided evidence of CE conformity of the complete machine or system.

3 Product overview

3.1 Scope of supply

Check the completeness of the delivery against your delivery note.

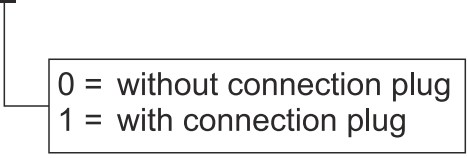
Missing parts or damage should be recorded immediately and reported to the carrier, the insurance and / or Beckhoff Automation GmbH & Co. KG.

The standard scope of supply includes:

Magnetic encoder system (MES)

3.2 Type key

AL2200-000 x



0 = without connection plug
1 = with connection plug

4 Properties

The Magnetic Encoder System (MES) consists of a reader head with integrated analog Hall sensors. The Hall sensors evaluate the magnetic field of the magnetic plates and convert the signal into an analog output signal.

Name	Value / property
Signal period	Pole pair spacing 24 mm
Output signal	Analog signal 1 V _{ss} , sine-cosine
Termination resistor	R = 120 Ω
Accuracy	< 100 μm The prerequisite is the precise installation of the magnetic plates with an accuracy of ± 20 μm and offset, phase and amplitude compensation.
Repeatability	< 50 μm
Resolution	5 – 10 μm
Power supply	5 V _{DC}
Connection cable	<ul style="list-style-type: none"> • 8-core • with twisted pairs • material PUR • UL-certified • diameter 3.2 mm • length 3 m

Assignment (color code)	
green	SIN +
yellow	SIN -
blue	COS +
red	COS -
brown	+ 5 V _{DC}
white	GND
pink	+ 5 V sense
grey	GND sense
Shield	PE / GND

Pin assignment for AX2000 / AX2500 and AX5000

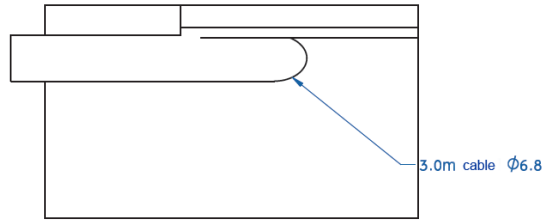
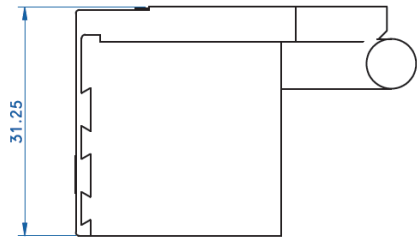
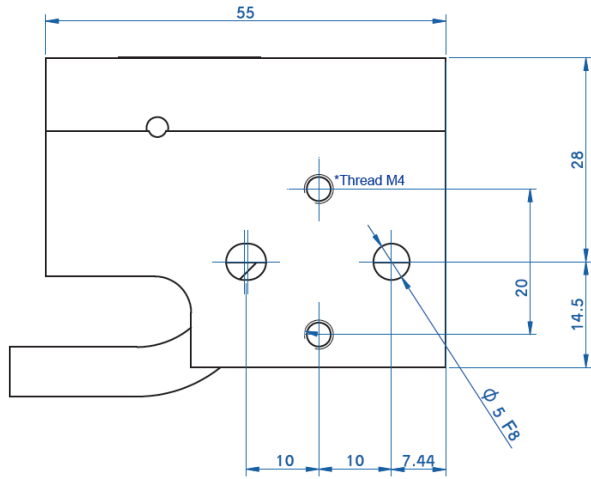
MES	MES – without connector	MES D-Sub (15-pin)	AX2000 / AX2500	AX5000 (X11 / X21)
Signal	Color	Pin	Pin	Pin
SIN +	green	8	11	1
SIN -	yellow	15	3	9
COS +	blue	6	9	3
COS -	red	13	1	11
+ 5 V _{DC}	brown	5	4 ^{*1}	4 ^{*1}
+ 5 V sense	pink	12	12 ^{*1}	12 ^{*1}
GND	white	7	2 ^{*1}	2 ^{*1}
GND sense	grey	14	10 ^{*1}	10 ^{*1}

*1) Pins 4 and 12 as well as 2 and 10 are bridged!

The appropriate signal coupling has the order number ZS4000-2051 (Service Pack). The AM2000/AM3000 encoder cables can then be used.

The feedback cable is connected to X1 on the AX2000 and to X2 on the AX2500.

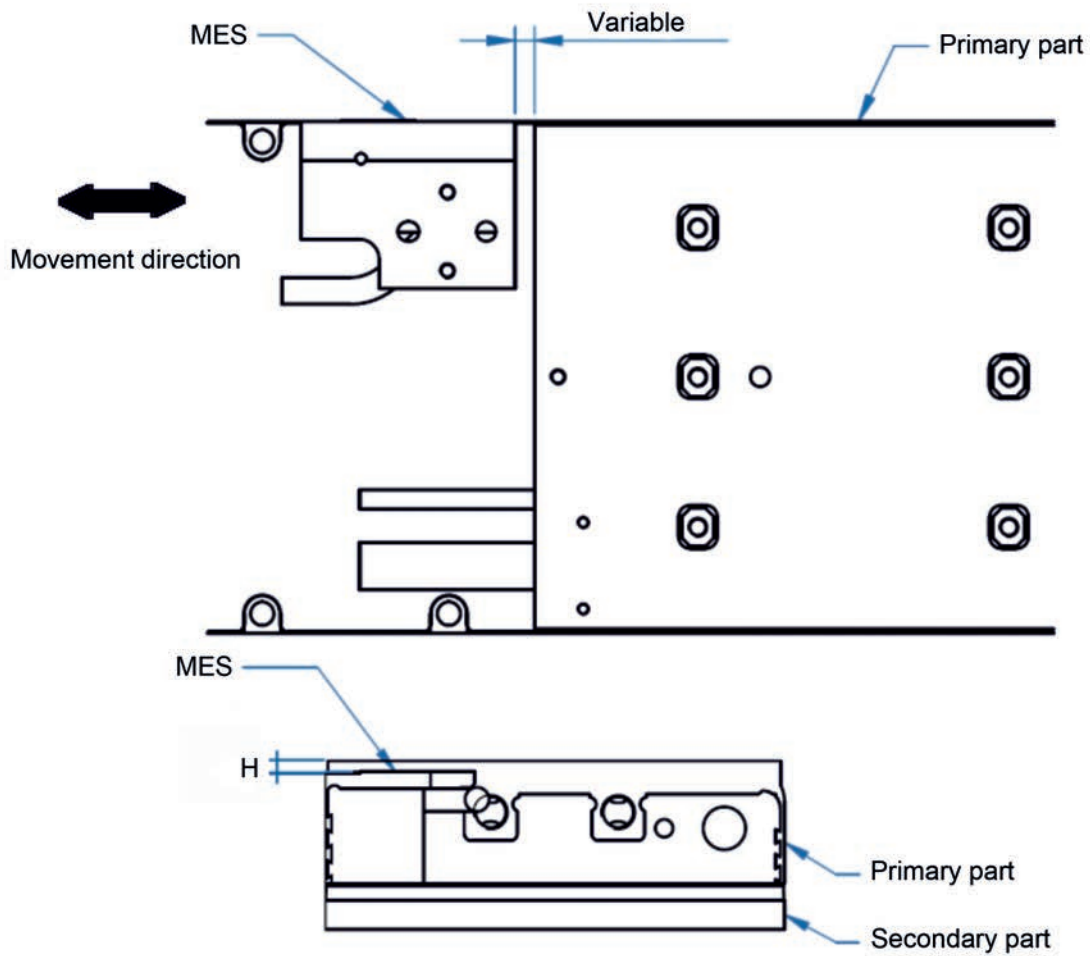
5 Dimensions



*Please be aware that the depth of the threaded hole is 4.5 mm!
Too long screws can cause damage to the MES!

6 Mounting

The MES is installed behind or in front of the primary part, so that it moves with the primary part over the secondary part.



	Distance to the top side of the primary part.	Rotation with respect to the movement direction	Distance to the outside edge of the primary part	Screws	Locating pins
	H in mm	deg	mm		
AL20xx	0	0.5	+/- 1	M4	Ø 5 F8
AL24xx	0				
AL28xx-0	1				
AL28xx-1	3				

7 Support and Service

Beckhoff and their partners around the world offer comprehensive support and service, making available fast and competent assistance with all questions related to Beckhoff products and system solutions.

Beckhoff's branch offices and representatives

Please contact your Beckhoff branch office or representative for [local support and service](#) on Beckhoff products!

The addresses of Beckhoff's branch offices and representatives round the world can be found on her internet pages:

<http://www.beckhoff.com>

You will also find further [documentation](#) for Beckhoff components there.

Beckhoff Headquarters

Beckhoff Automation GmbH & Co. KG

Huelshorstweg 20
33415 Verl
Germany

Phone:	+49(0)5246/963-0
Fax:	+49(0)5246/963-198
e-mail:	info@beckhoff.com

Beckhoff Support

Support offers you comprehensive technical assistance, helping you not only with the application of individual Beckhoff products, but also with other, wide-ranging services:

- support
- design, programming and commissioning of complex automation systems
- and extensive training program for Beckhoff system components

Hotline:	+49(0)5246/963-157
Fax:	+49(0)5246/963-9157
e-mail:	support@beckhoff.com

Beckhoff Service

The Beckhoff Service Center supports you in all matters of after-sales service:

- on-site service
- repair service
- spare parts service
- hotline service

Hotline:	+49(0)5246/963-460
Fax:	+49(0)5246/963-479
e-mail:	service@beckhoff.com