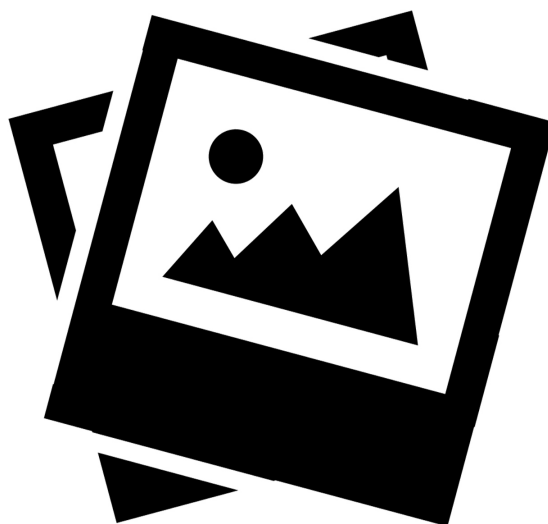


ZK2000-6600-0xxx | Sensor cable, PUR, 4 x 0.34 mm², drag-chain suitable



M12, flange rear assembly, straight, female, 4-pin, A-coded – open end, 4-wire



Plugs

Electrical data	Head A	Head B
Rated voltage	250 V (according to IEC 61076-2-101)	-
Rated current	4 A at 40 °C (according to IEC 61076-2-101)	-
Rated impulse voltage	1.5 kV	-
Shielding	no	-
Contact resistance	< 10 mΩ	-
Insulation resistance	≥ 100 MΩ (according to IEC 60512)	-
Mechanical data		
Installation size	M12	open end
Connector type	flange rear assembly	-
Configuration	straight	-
Contact type	female	-
Number of positions (face)	4-pin	4-wire
Coding	A-coded	-

Recommended torque, nut	0.6 Nm	-
Mating cycles	≥ 100 (according to IEC 60512-9a)	-
Way of locking	screw	-
Seal	FPM	-
Contact carrier color	red	-
Contact carrier material	PA 6, UL 94 V0	-
Contact plating	Ni, Au gal.	-
Contact material	CuZn	-
Environmental data		
Special features	halogen-free, flame-resistant as per IEC 60332-1-2, oil-resistant as per DIN EN 60811-2-1	-
RoHS compliant	yes	-
Ambient temperature (operation)	-30...+85 °C, -22...+185 °F	-
Protection rating	IP65/67 in screwed condition (according to IEC 60529)	-
Pollution level	3/2 (according to IEC 60664-1)	-

Cable

Electrical data		
Rated voltage	≤ 300 V	
Insulation resistance	≥ 10 GΩ * km	
Wire resistance (signal/24V)	≤ 58.0 Ω/km (20 °C)	
Test voltage	≥ 3000 V	
Mechanical data		
Conductor construction (power)	42 x 0.10 mm	
Cross-section	4 x 0.34 mm ² (AWG 22)	
Min. bending radius, moved	6 x outer cable diameter	
Min. bending radius, moved in drag-chain	10 x outer cable diameter	
Min. bending radius, fixed installation	5 x outer cable diameter	
Weight	31 kg/km (20.8 lb/1000 ft)	
Outer cable diameter	4.7 mm ± 0.15 mm (0.185" ± 0.0059")	
Shielding	no	
Use	drag-chain suitable	
Max. acceleration	10 m/s ²	
Max. speed	5 m/s	
Max. number of cycles	10 million at max. 20 m travel distance, 2 million at max. 100 m travel distance	

Wall thickness of wire insulation (power) ≥ 0.21 mm

Jacket color black

Material jacket PUR (polyurethane)

Wire color code white, blue, black, brown

Wire insulation material PP (polypropylene)

Printing on the jacket Li9Y11Y 4x0,34mm² E242293 (cULus-Symbol) AWM STYLE 20549 80C 300V AWM I A/B 80C 300V FT2

Printing color white

Environmental data

Operation temperature range, moved -25...+80 °C, -13...+176 °F

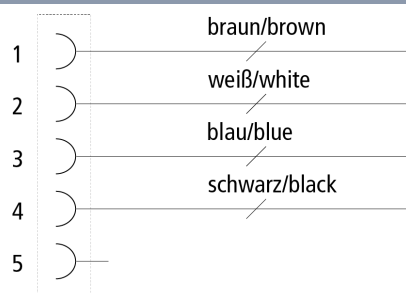
Flame-retardant according to DIN EN 60332-2-2

Halogen-free DIN VDE 0472 part 815

CE yes

UL yes, UL E-file number: E242293

Contact assembly



Dimensions



A1 20.50 mm

A2 M12 inner diameter, M16 outer diameter

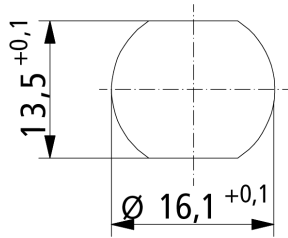
Notes

- Depending on the cable length (L), the following length tolerances apply:
0 m...<0.2 m: ± 10 mm | 0.2...4.0 m: + 40 mm | ≥ 4.0 m: + 1 %
- Illustrations similar
- Further cable length on request.

CE, UL

CE yes

Installation dimensions



Ordering information

Length

ZK2000-6600-0020

2.00 m



Beckhoff®, TwinCAT®, TwinCAT/BSD®, TC/BSD®, EtherCAT®, EtherCAT G®, EtherCAT G10®, EtherCAT P®, Safety over EtherCAT®, TwinSAFE®, XFC®, XTS® and XPlanar® are registered trademarks of and licensed by Beckhoff Automation GmbH. Other designations used in this publication may be trademarks whose use by third parties for their own purposes could violate the rights of the owners.

© Beckhoff Automation GmbH & Co. KG 04/2022

The information provided in this brochure contains merely general descriptions or characteristics of performance which in case of actual application do not always apply as described or which may change as a result of further development of the products. An obligation to provide the respective characteristics shall only exist if expressly agreed in the terms of contract.