

# Installation of Beckhoff EPLAN macros



As for now, Beckhoff doesn't provide it's component macros through EPLAN Portal, they must be installed manually. It's relatively easy and straight forward to do by following these steps:

1. Download EPLAN macro package from Beckhoff web page. Latest version above 2.7 will work with all EPLAN versions >= 2.7

<https://www.beckhoff.com/fi-fi/support/download-finder/macros/>

**EPLAN Macros** Macros, ZIP (41 MB), ZIP (74 MB), ZIP (62 MB)

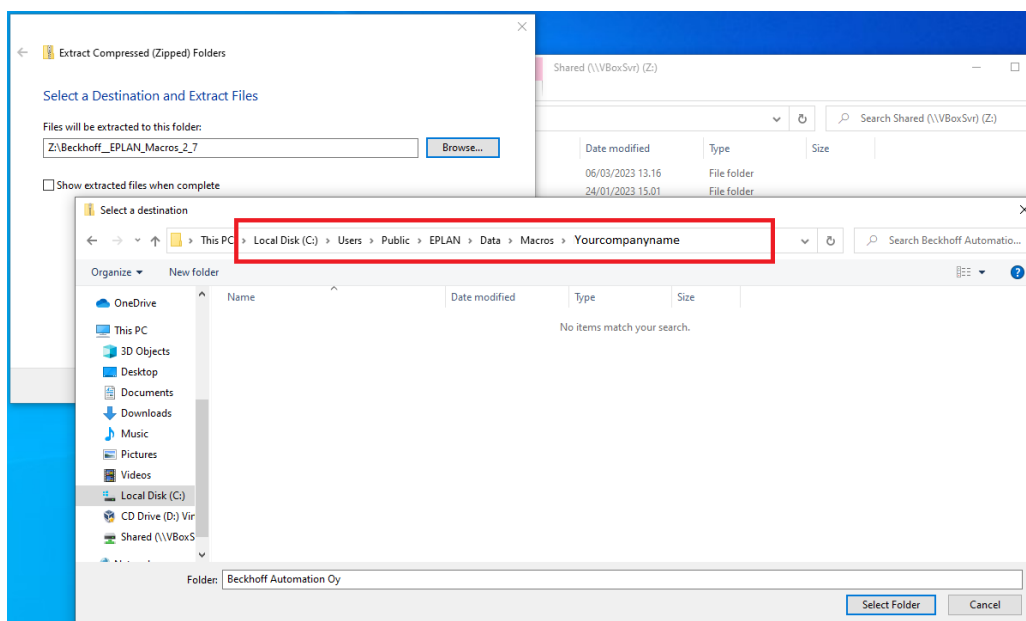
Download our electronically provided macros.

Valid for the following products  
AX5101, AX5101-0000-0200, AX5101-0000-0202, AX5103, AX5103-0000-0200, AX5103-0000-0202, AX5106, AX5106-0000-0200, AX5106-0000-0202

[Show more ↓](#)

Version	Update	
ab 2.7	02.02.2023	↓ ZIP (41 MB)   myBeckhoff registration required
2.4, 2.5, 2.6	28.10.2022	↓ ZIP (74 MB)   myBeckhoff registration required
2.2	15.11.2022	↓ ZIP (62 MB)   myBeckhoff registration required

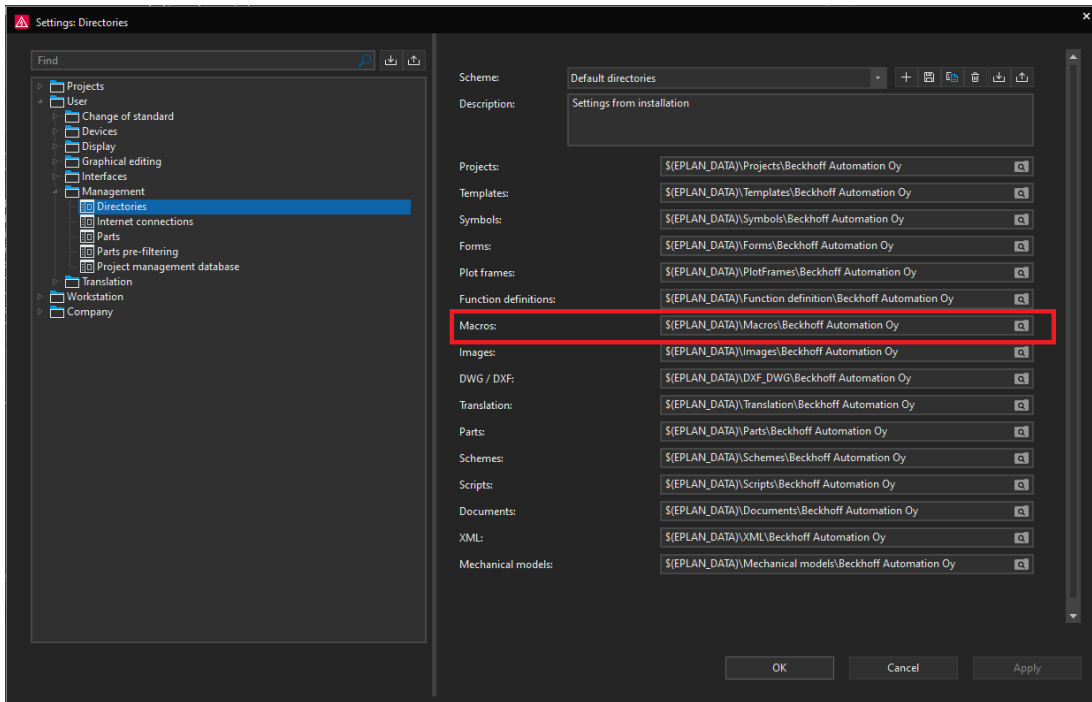
2. Extract zip package to your EPLAN macro folder. By default it is C:\Users\Public\EPLAN\Data\Macros\Yourcompanyname\.



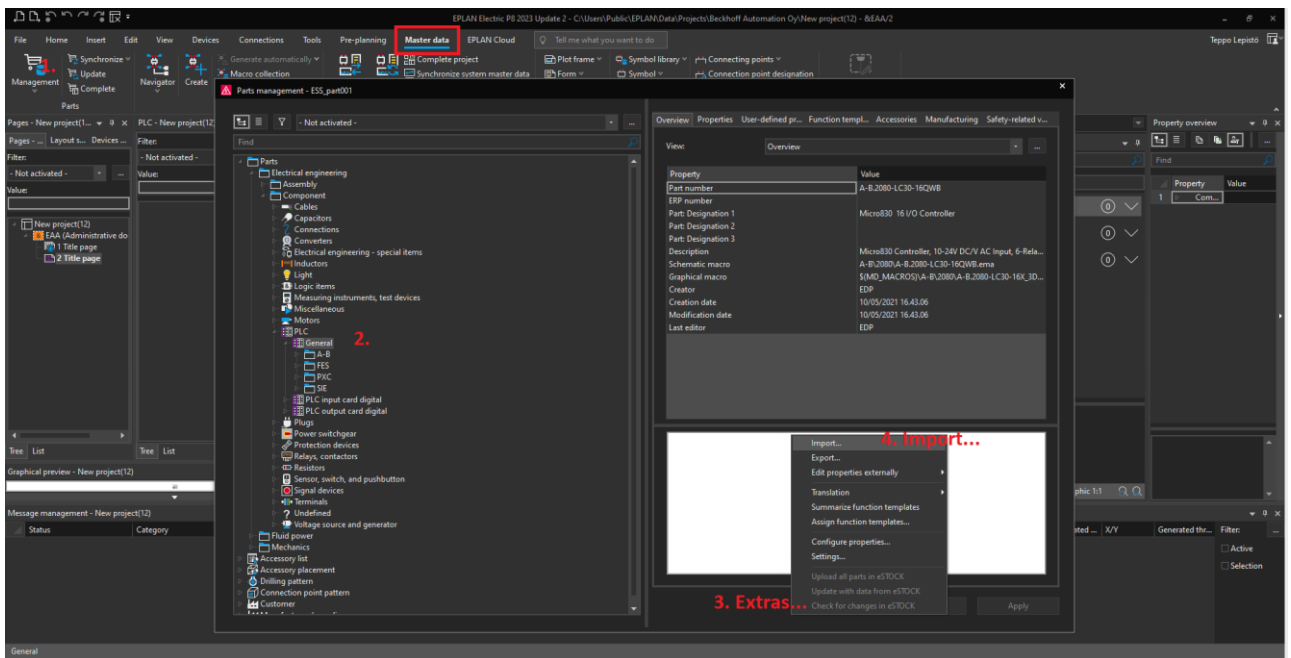
# Installation of Beckhoff EPLAN macros



Macro folder can be checked and changed from EPLAN settings: File/Settings... User/Management/Directories



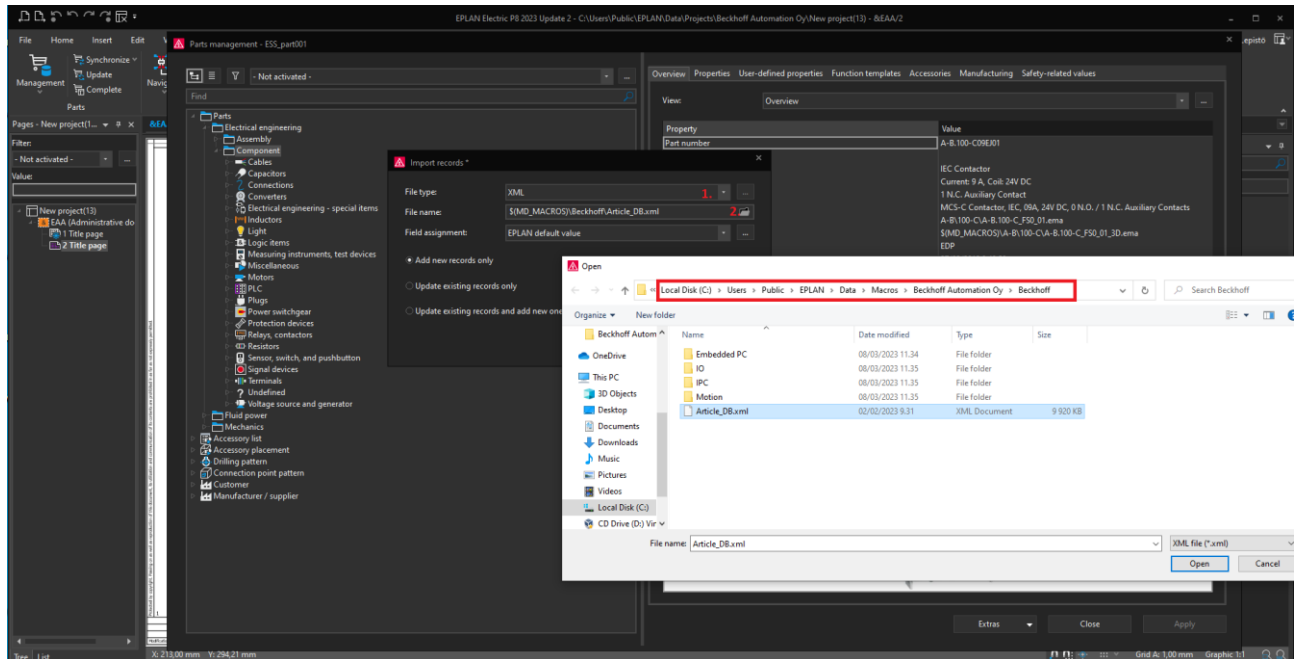
- 3. Open EPLAN, go to Master data ribbon and click Management. On the Parts management window, browse to Electrical engineering-Component-PLC-General, then click Extras... and Import...



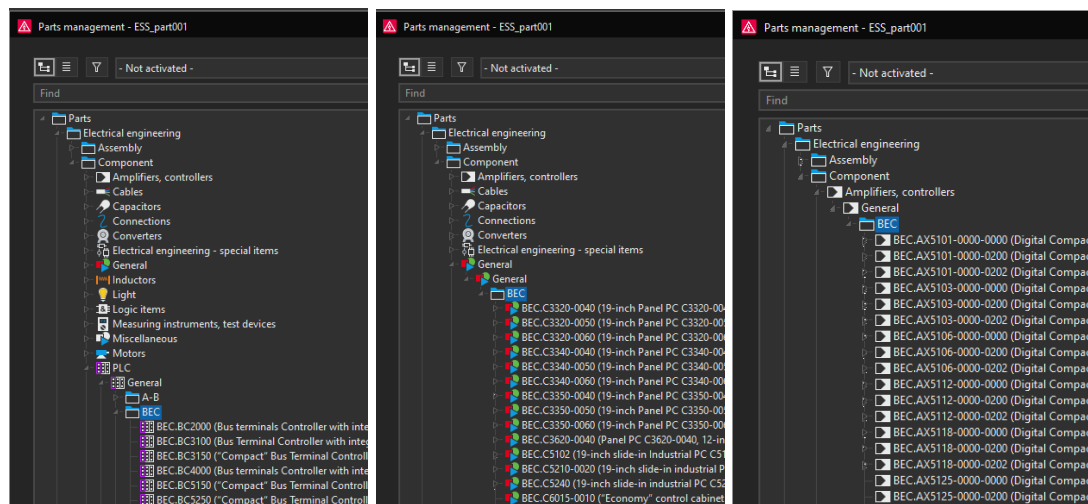
## Installation of Beckhoff EPLAN macros



4. Choose File type of XML and browse for directory where you extracted macros on step 2. Choose Article\_DB.xml



5. After the import, you see that all Beckhoff components are listed. Macros can be found on three different locations: IO cards under *PLC\General*, controllers (IPC/CX) under *General\General* and servodrives under *Apifiers, controllers\General*.



## Installation of Beckhoff EPLAN macros



Now you should find all Beckhoff macros in your Insert center and use them on your EPLAN designs!

