


Housings by Rittal – Industrial PCs by Beckhoff



Efficiency in its most compact form

BECKHOFF

Switch to perfection  **RITTAL**

The perfect symbiosis of display and housing

Built-in PC for flexible IPC concepts

Beckhoff has extended its IPC product range with a new generation of built-in industrial PCs: The C65xx family has been designed for installation either in control enclosures or in the rear panels of control and console housings. Incorporation of the IPC into an existing housing provides for an extremely compact solution, and at the same time permits flexible configuration of the control elements at the front.



The heat sinks of the C65xx series are passed to the outside through a corresponding cut-out in the housing or enclosure panel. Integrated seals maintain a water- and dust-tight IP67 design.

The new C65xx series promises the user maximum flexibility when selecting the control panel. The IPC remains independent of the number and form of control buttons and switches on the front panel. A slimline operator housing, with integrated IPC at the rear and a standard panel, permits flexible configuration of the control elements at the front, precisely as required for the particular application – and expansions remain possible at any time.

In combination with the automation software TwinCAT, the C65xx forms the basis for high-performance PLC and Motion Control solutions.



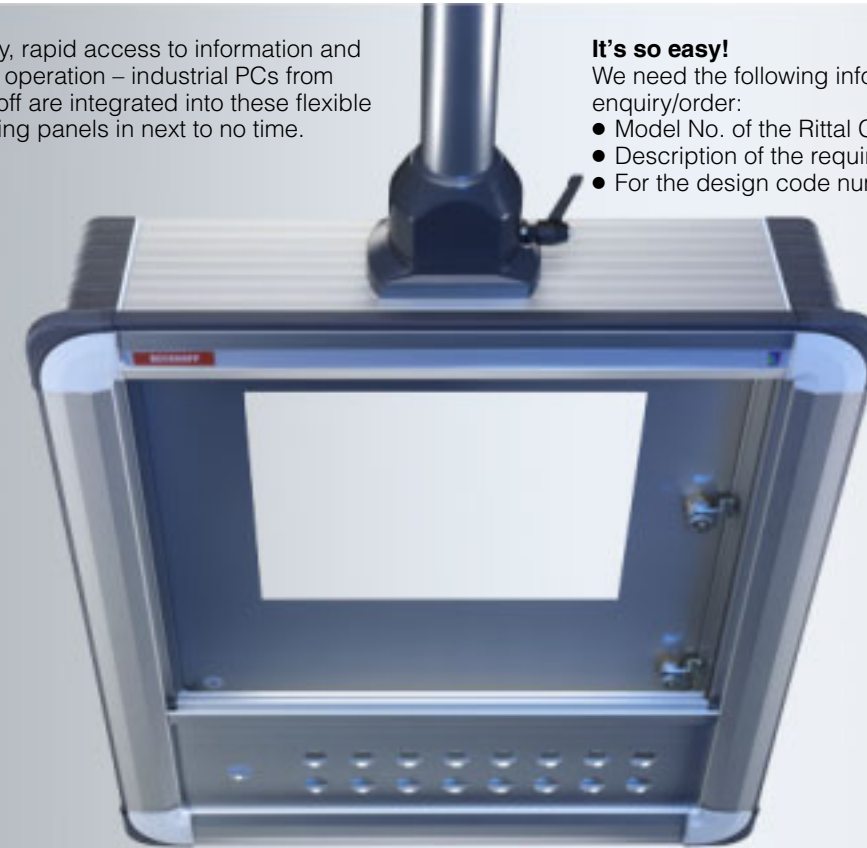
Rittal Comfort Panel – Individual and safe

Mobility, rapid access to information and simple operation – industrial PCs from Beckhoff are integrated into these flexible operating panels in next to no time.

It's so easy!

We need the following information in order to deal with your enquiry/order:

- Model No. of the Rittal Comfort Panel: **CP 6372.009**
- Description of the required Beckhoff industrial PC
- For the design code number of the Comfort Panel, please refer to Cat. 32, from page 196. Alternatively, for a simple, fast and reliable solution, use our online configurator at www.rittal.com/configurator



The Command Panel with a "third dimension"

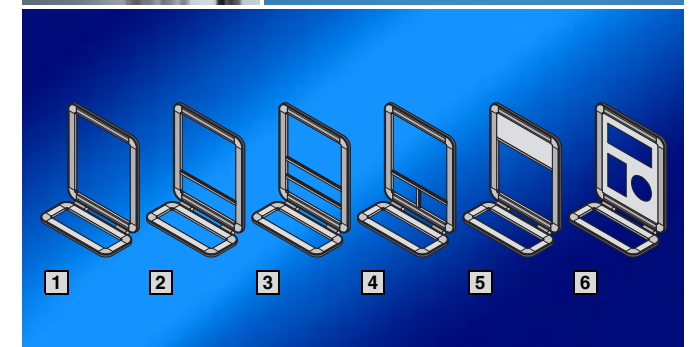
Individuality in terms of dimensions, configuration and design are some of the most successful features of the Rittal range for the human/machine interface.

- Universal attachment of the Command Panels. From the front or rear, using screw clamps, bolts or screws – all mounting requirements are accommodated.
- Shallow front frame for optimum access to the disk drive at the side. Secure attachment of the frames to one another.
- All-round plastic soft section minimises the risk of injury.
- The design section may be used for labelling and for colour-coordination with the machine.
- Uniform mounting channels on all sides for the external and internal mounting of accessories.

Front design

Subdivision of the operating level with Rittal standard modules fulfils every requirement.

- Operating/keyboard housing precisely dimensioned to the chosen display (1).
- Sub-divided with one (2) or two (3) cross members, optionally horizontal, vertical or combined (4).
- Spacing panel and built-in trim panel at the top (5) or bottom.
- Adaptor plate (6) – to your specifications.



Combining strengths – Solutions by Beckhoff and Rittal

Beckhoff industrial PCs

Beckhoff supplies the right industrial PC for every application. Integrating high-quality components based on open standards, the industrial PCs are perfectly equipped for all control system demands. Besides applications in automation, Beckhoff industrial PCs are also ideally suited for all other tasks where reliable and robust PC technology is imperative.



Built-in industrial PC

The IPC series for enclosure installation with Intel® Core™ Duo/Core™2 Duo.



“Economy” built-in panel PC

The slimline built-in industrial PC with 3½-inch motherboard



“Economy” built-in control panel

The “economy” built-in control panel with Ethernet interface



“Economy” built-in control panel

The “economy” built-in control panel with DVI/USB Extended interface

Rittal – Command Panel systems

We offer a broad spectrum of products to meet modern requirements.

Superb quality, inexpensively priced, and ergonomically customised to meet individual needs. Programming, operating, monitoring – solutions that have evolved from dialogue with our customers.



VIP 6000

The multi-talented all-rounder in form and function
5 installation depths 155 – 438 mm



Optipanel

The slimline design alternative
3 installation depths 50 – 150 mm



Comfort Panel

Functional and reliable
11 installation depths 74 – 464 mm



Compact Panel

For small operating units
Installation depth 69 mm



Premium Panel

The stainless steel alternative
2 installation depths: 120 and 220 mm

There's always a solution! Give us a call!

- Please send me some brochures.
- Please contact me to clarify further details, or
- Please arrange an appointment with one of your specialist advisors.

From:

Name

Company

Address

Telephone

eMail

01/09

Beckhoff Automation GmbH
Eiserstraße 5 · 33415 Verl
Germany
Telephone +49(0)5246 963
Telefax +49(0)5246 963-198
www.beckhoff.com
info@beckhoff.com

BECKHOFF

Rittal GmbH & Co. KG
Postfach 1662 · D-35726 Herborn
Telephone +49(0)2772 505-0
Telefax +49(0)2772 505-2319
www.rittal.com
info@rittal.de

FRIEDHELM LOH GROUP

